



Water & Environment Subcommittee

August 9, 2023





Self Introductions



Background & Purpose

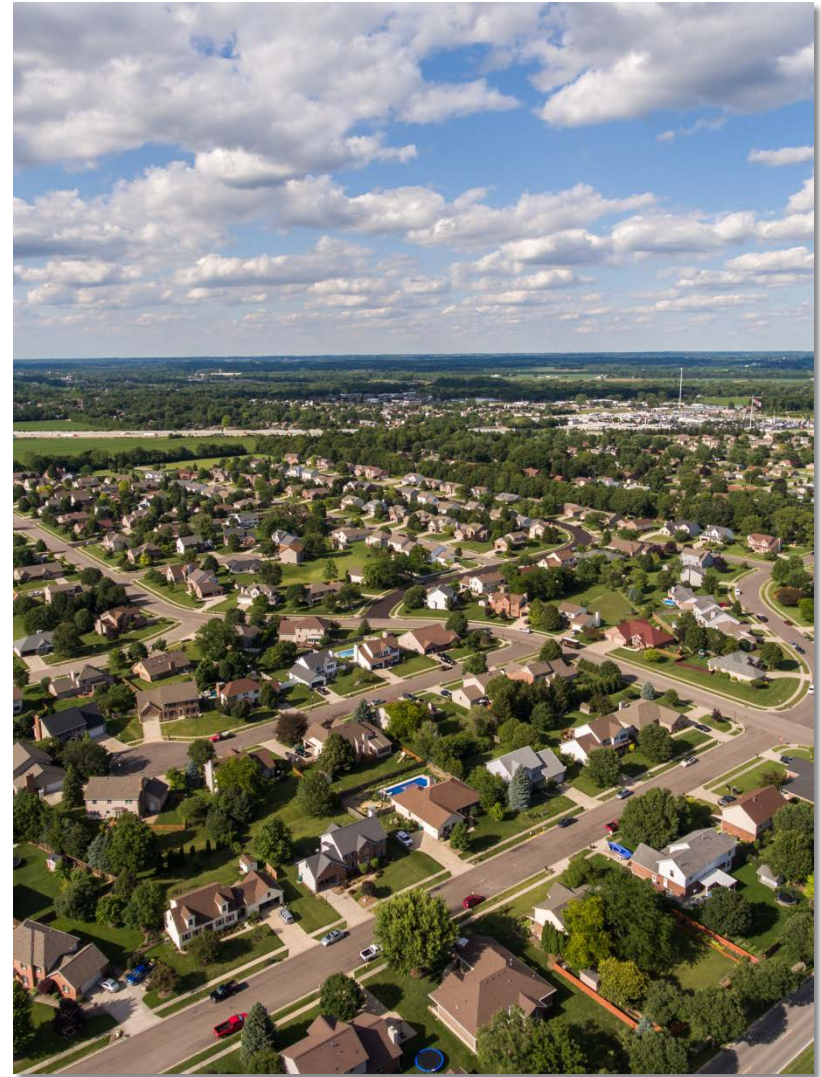
Inputs to Environmental Planning

- Areawide Facility Planning Subcommittee
 - “208” Plan and Wastewater Planning
 - Communities with treatment facilities
- Sustainability Roundtables
 - Education



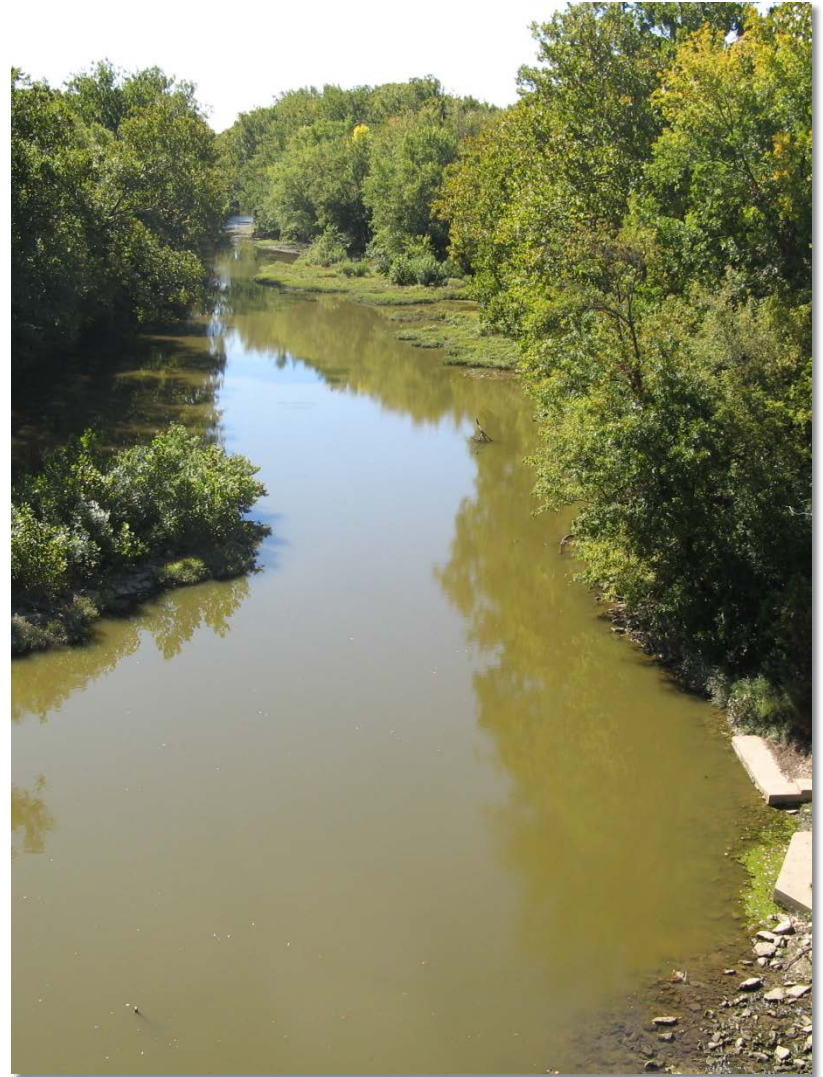
Inputs to Environmental Planning

- Water & Environment Subcommittee
 - Broader scope, *e.g.*
 - Water quality
 - Emerging contaminants
 - Environmental Justice
 - Solid waste
 - Climate
 - Wider participation



Water & Environment Subcommittee

- Operate by consensus
 - *Chair and Minutes?*
- All inputs to be shared with TAC and Board
- Topics from staff and/or Participants
- Meetings at least quarterly
 - More during Climate project



Water & Environment Subcommittee



Comments

Discussion

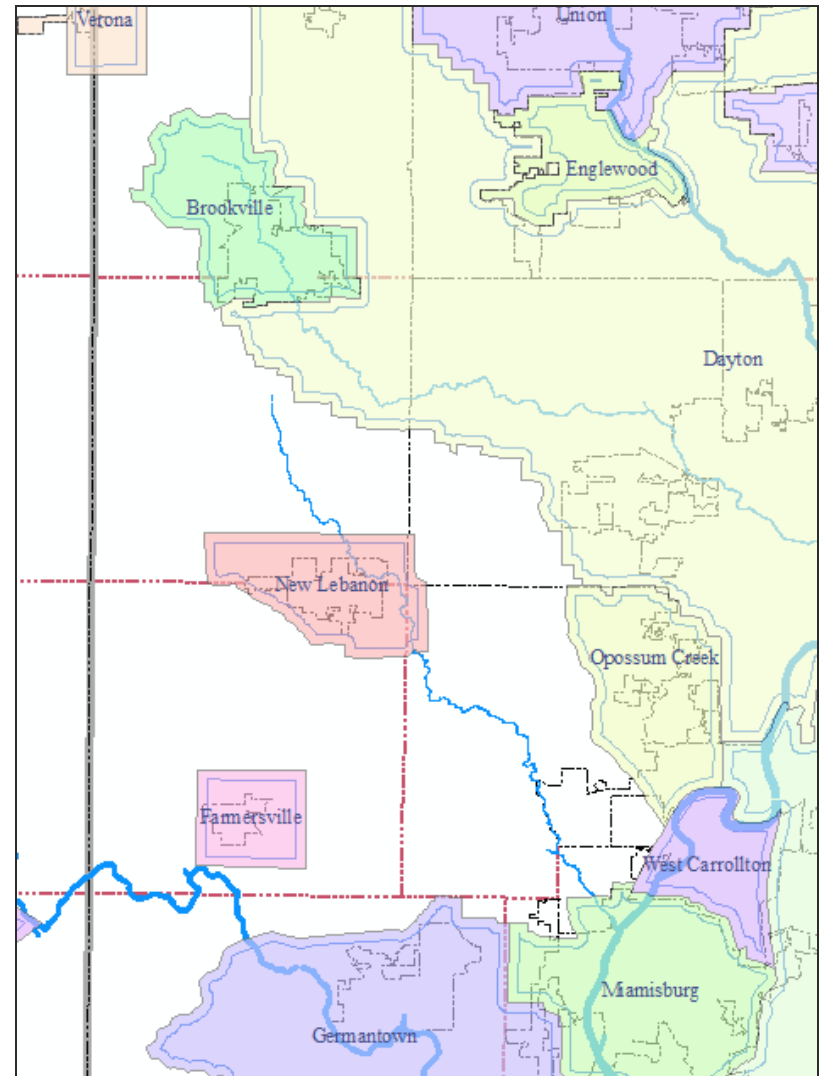




FPA Updates: Process and Calendar

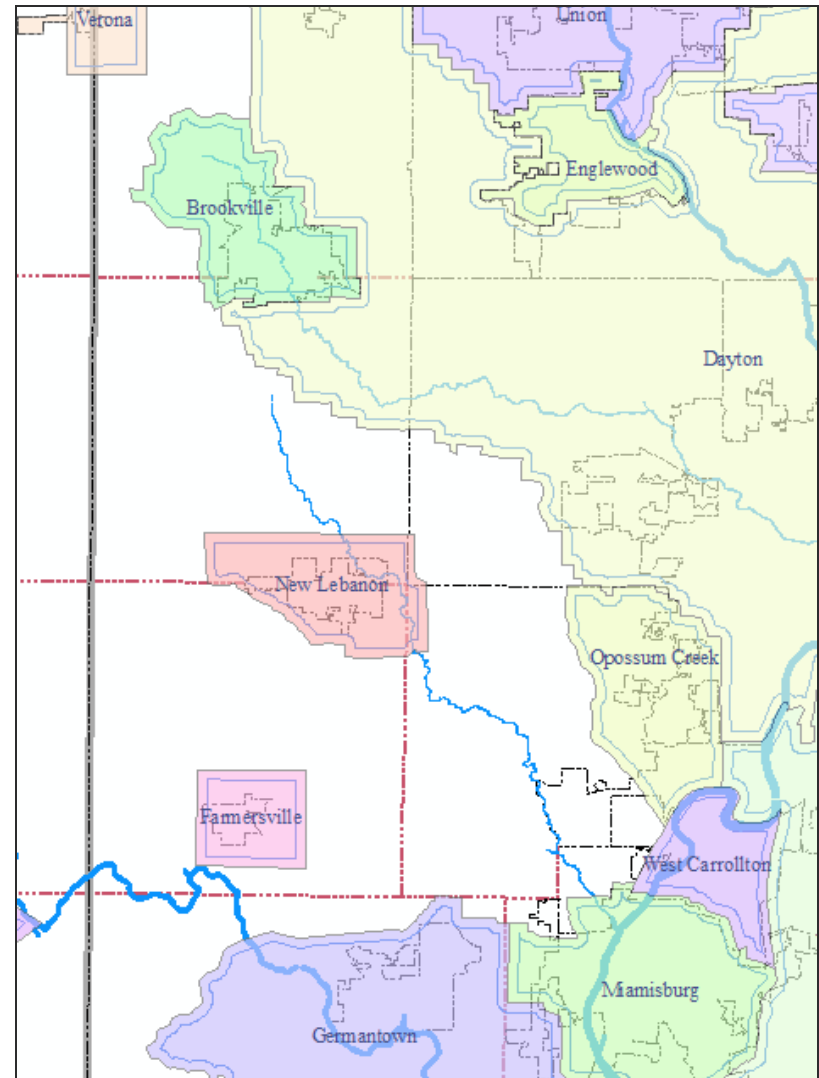
Facility Planning Area Updates

- **Please see draft memo in the agenda packet.**
- **Purposes**
 - Describe preferred process and expectations for FPA updates.
 - Establish an annual schedule for FPA update consideration.



Facility Planning Area Updates

- Please see draft memo in the agenda packet.
- Contents:
 - Reasons for FPA updates
 - Update Process steps
 - Offer of MVRPC staff assistance in FPA planning
 - Generic Calendar
- Comments by **August 25, 2023**
 - Finalize by 8/31/23



Facility Planning Area Updates

Comments

Discussion

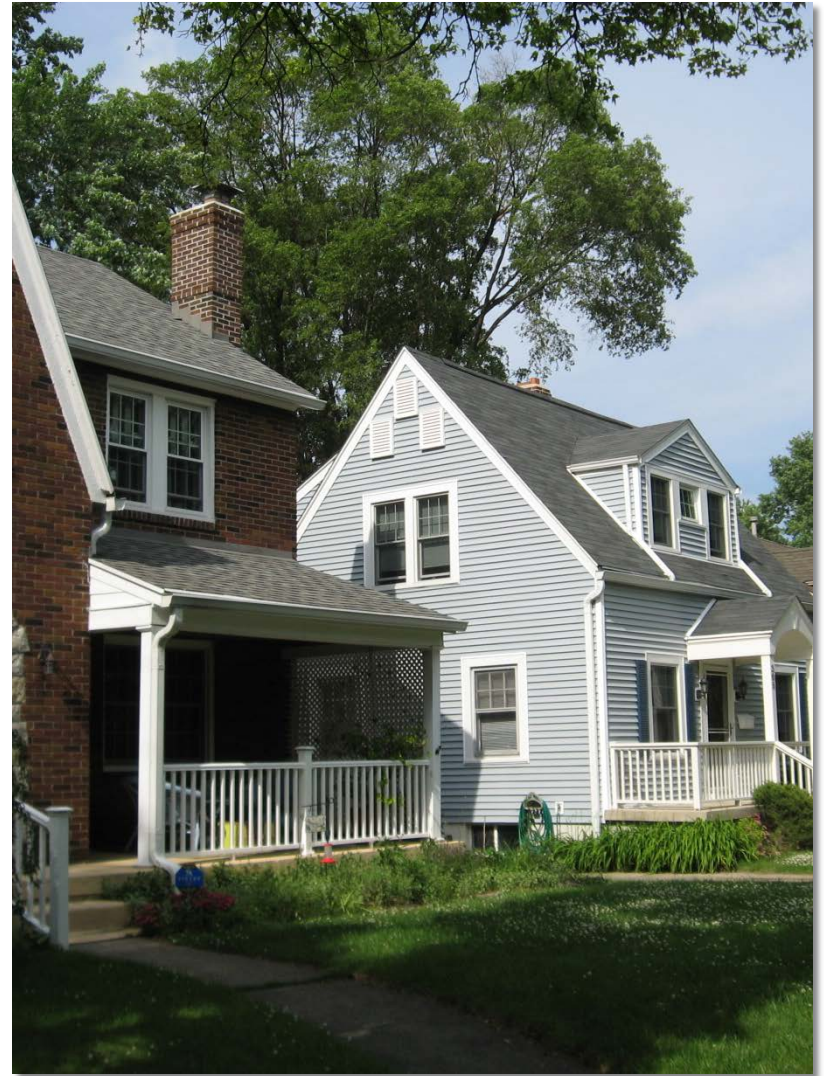




Climate Pollution Reduction Planning Grant

Climate Pollution Reduction Grant

- *Inflation Reduction Act*
- Funds planning work for
 - Reductions in GHG emissions
 - Workforce development
 - Environmental equity



Seeking Consultant Support

- RFP released on July 6, 2023
- Support for
 - Technical products
 - Stakeholder and public engagement
- Proposals due on August 17, 2023
- <https://www.mvrpc.org/about/contract-solicitation>



Water & Environment Subcommittee

- Guide, review, and comment upon CPRG workplan and products
 - GHG inventories, projections
 - Quantified GHG reduction measures
 - Benefits analyses
 - Environmental equity
 - Workforce development





Disaster Recovery/Resilience Planning Connections

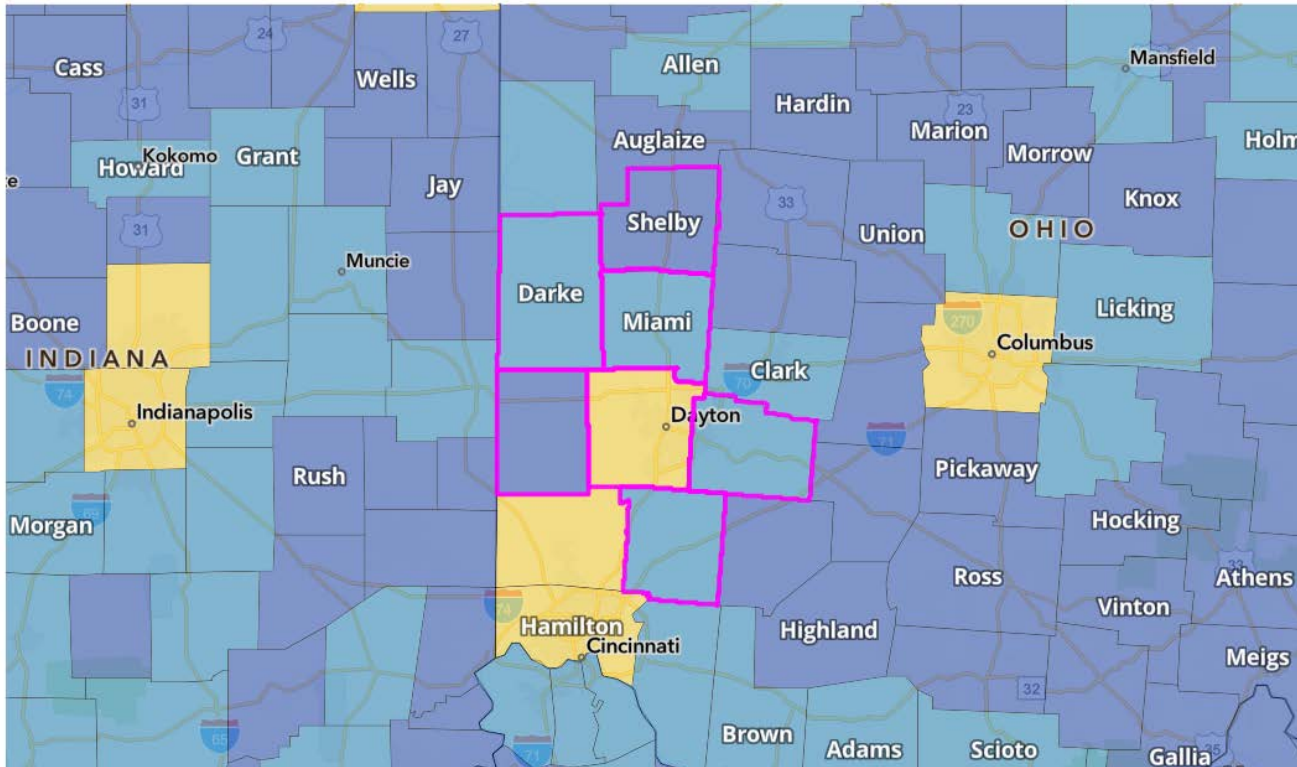
Dayton Region Resiliency Planning

- In direct response to the 2019 Memorial Day tornadoes, MVRPC was identified as the Lead in Long-Term Community Recovery
 - As a result we received funding from the US EDA to aid jurisdictions impacted by the tornadoes in recovery
 - This includes establishing a regional resiliency plan
- In August 2022 we held a kick-off meeting to understand challenges and successes from the tornado recovery and to determine what resiliency means to the region
- Planning working groups were established surrounding Recovery Support Functions outlined in the National Disaster Recovery Framework
- This work will allow our communities to plan for and respond to hazards and threats faster and recovery more quickly

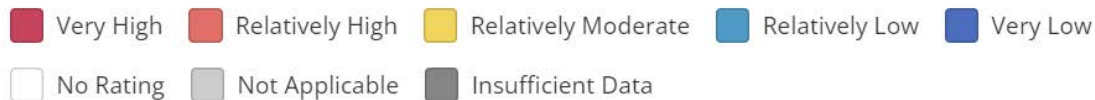


Risk Index for Miami Valley Region

Risk Index



Risk Index Legend



*Source: FEMA National Risk Index

<https://hazards.fema.gov/nri/map>

Natural hazards region is most at risk:

- Flood
- Wind
- Winter Weather
- Tornado



Resiliency Planning & CPRG Support

- How do the CPRG and resiliency planning effort support our region?
 - Understanding where the largest emissions come from can help our communities with establishing priority projects related to mitigation efforts
 - Could help lower the amount of weather related threats to the region improving overall resiliency
- How does this group envision the resiliency planning effort supporting the CPRG work?
 - What would you like to see included in the resiliency plan?
 - Are there important concepts that should be considered?
 - How do you envision the CPRG improving environmental resiliency?



Climate & Resiliency Planning

Comments

Discussion





Next Meeting/Next Steps

To-do's - Next Meeting

- Comments on FPA memo by August 25
- Share CPRG info with your colleagues, elected officials
- Update contact information for WESC participation
- After CPRG consultant is on board
- Late September/early October





Community/Organizational Updates



Thank you!