

# Appendix A

## Public Participation Summary Report





# **Public Participation Overview**



## Webpage

In 2022, a webpage was created for the RTPO Pilot Program to track the scope and schedule of the effort. The times and locations for the Regional Transportation Planning Organization meetings and workshops were also made available on the webpage.

[rtpo.mvrpc.org](http://rtpo.mvrpc.org)



Regional Transportation Planning Organization Meetings & Workshops	Date	Location	Presentations
RTPO Steering Committee	Tuesday, August 16, 2022	Dayton Revere - 1618 S. Main St., Dayton	<a href="#">RTPO Meeting Agenda August 2022</a> <a href="#">RTPO Meeting Minutes August 2022</a>
RTPO Workshop	Wednesday, October 19, 2022	Zoom	<a href="#">October RTPO Meeting Agenda and Presentation October 2022</a> <a href="#">RTPO Meeting Minutes October 2022</a>
RTPO Steering Committee	Wednesday, November 16, 2022	Dayle Rural Excess Facility - 1120 Fern Jefferson Ave., Greenville	<a href="#">November RTPO Meeting Agenda and Presentation November 2022</a> <a href="#">RTPO Meeting Minutes November 2022</a>
RTPO Workshop	Wednesday, January 18, 2023 - 2:00 p.m.	Zoom	<a href="#">January RTPO Workshop Agenda January 2023</a> <a href="#">RTPO Meeting Minutes January 2023</a>
RTPO Steering Committee	Wednesday, February 15, 2023 - 2:00 p.m.	Shelby County Agriculture Center - 820 Far Road, Sidney	<a href="#">February RTPO Meeting Agenda and Presentation February 2023</a> <a href="#">RTPO Meeting Minutes February 2023</a>
RTPO Steering Committee	Wednesday, May 17, 2023 - 2:00 p.m.	Public County Fairgrounds/Estimote Building 722 South Franklin Street, Eaton	<a href="#">May RTPO Meeting Agenda May 2023</a> <a href="#">RTPO Meeting Minutes May 2023</a>
RTPO Steering Committee	Wednesday, August 16, 2023 - 2:00 p.m.	Dayton Metro Library - Main   The Essanai Theatre off Third 218 E 8th St., Dayton, OH 45402	<a href="#">August RTPO Meeting Agenda August 2023</a> <a href="#">RTPO Meeting Minutes August 2023</a>
RTPO Steering Committee	Wednesday, December 20, 2023 - 4:00 p.m.	Virtual Meeting via Zoom	<a href="#">December RTPO Meeting Agenda and Presentation December 2023</a> <a href="#">RTPO Meeting Minutes December 2023</a>

**Meeting Information:**  
 MVRPC is holding a public participation meeting to present the draft Regional Transportation Plan for the (Large) Public-County Region on **March 25, 26, and 27, 2024, from 5:00 p.m. – 6:00 p.m.** in each county in the Region. The information provided below will also be presented at a virtual public meeting on **Tuesday, March 26, 2024 from 12:00 p.m. – 1:00 p.m.** via Zoom.

**Schedule:**  
**Monday, March 25, 2024 from 5:00 p.m. to 6:00 p.m.**  
 Dayton-Side Devco Facility  
 1120 Fern Jefferson Avenue, Greenville, OH

**Tuesday, March 26, 2024 from 12:00 p.m. to 1:00 p.m.**  
 Access the meetings via computer, tablet or mobile device using this link:  
<https://rtpo.mvrpc.org/zoom/join/9775051240>  
 Enter Meeting ID: 927 2509 3290

Or call in to join the meeting by phone:  
 (540) 658-8822 - Meeting ID: 927 2509 3290 US (New York)  
 (301) 715-8582 - Meeting ID: 627 2508 3280 US (Washington D.C.)

Participation via computer, tablet or mobile device using the link above is encouraged to take advantage of Zoom on screen meeting features even if relying on the phone for audio functions.

**Tuesday, March 26, 2024 from 5:00 p.m. to 6:00 p.m.**  
 Shelby County Agriculture Center  
 820 Far Road, Sidney, OH

**Wednesday, March 27, 2024 from 5:00 p.m. to 6:00 p.m.**  
 Public County Fairgrounds - Exposition Building  
 722 South Franklin Street, Eaton, OH

**Documents and Links:**  
[RTPO Visual Summary Slides PPT](#)  
[RTPO Draft RTP PPT](#)  
[Project List Map](#)  
[Project Map](#)  
[Transit Routes Area Map PPT](#)

Please leave comments using this [COMMENT FORM](#) or email [aramirez@mvrpc.org](mailto:aramirez@mvrpc.org).

**DRAFT REGIONAL TRANSPORTATION PLAN COMMENT FORM**  
 DRAFT Regional Transportation Plan

---

Would you like a written response to your comment?  
 No  
 Yes  
 If yes, please fill out the contact information below.

Contact Information

Would you like a written response to your comment? If yes, then fill out the contact information below.

Name

Address

City

State

Zip



Email


The comment period for the Draft RTP was from March 11 – April 10, 2024. During the public participation comment period, the webpage included the draft RTP, project lists/maps, and an online comment card.

## Meeting Locations

The RTP Public Participation meetings were held at the end of March 2024 at various locations and times in each county in the Region. A virtual public participation meeting was held to present information on the Regional Transportation Plan contents, with MVRPC staff in attendance to address comments or questions from participants. MVRPC also made information available at its office during the public participation comment period.

## RTPO Public Participation Meetings

Outreach	Content	Meetings	
<ul style="list-style-type: none"> <li>Public notice in a weekly newspaper published in each individual County                             <ul style="list-style-type: none"> <li>The Early Bird, Darke County</li> <li>The Register Herald, Preble County</li> <li>Sidney Daily News, Shelby County</li> </ul> </li> <li>30 second radio ads on WHIO, WMMX, WTGR, WEDI, Alpha Media Digital (177 ads)</li> <li>Targeted audio streaming ads in Darke, Preble, and Shelby counties with companion banner (18,750 impressions)</li> <li>Submitting press release to all local newspapers and radio stations – approximately 24 media companies</li> <li>Emails and letters to Steering Committee members and public participation contact list</li> <li>Letters and promotional posters to all public libraries in Darke, Preble, and Shelby counties in English and Spanish</li> <li>Email posters and corresponding letters in English and Spanish to organizations/businesses that serve have contact with Environmental Justice, LEP, and other vulnerable populations</li> <li>Press release on MVRPC’s website</li> <li>Posts on Facebook, LinkedIn, and X (formerly Twitter), including boosted posts on Facebook and Instagram</li> <li>Information on the Plan, projects, and a comment card at <a href="http://rtpo.mvrpc.org">rtpo.mvrpc.org</a></li> <li>Distributed English and Spanish Posters to Steering Committee members</li> </ul>	<ul style="list-style-type: none"> <li>RTP Overview and Goals</li> <li>Existing Conditions Overview</li> <li>Safety Analysis for the Region</li> <li>Land Use and Environmental Resources in the Region</li> <li>Socioeconomic Trends, Environmental Justice, and LEP Populations</li> <li>Transportation Performance Management</li> <li>Future RTP Projects, Fiscal Constraint</li> <li>Draft RTP Report</li> </ul>	<b>March 25<sup>th</sup></b> Darke County	
		<ul style="list-style-type: none"> <li>8 people attended the meeting in Darke County</li> <li>No formal comments were received; staff spoke with participants, took their input, and answered questions</li> </ul>	
		<b>March 26<sup>th</sup></b> Virtual	<ul style="list-style-type: none"> <li>5 people attended the Virtual (Zoom) Public Meeting for the RTP</li> <li>No formal comments were received during the meeting</li> </ul>
		<b>March 26<sup>th</sup></b> Shelby County	
		<ul style="list-style-type: none"> <li>6 people attended the meeting in Shelby County</li> <li>Two comments were received through comment cards</li> </ul>	

Outreach	Content	Meetings
		<div data-bbox="1105 262 1546 317" style="background-color: #e0e0e0; padding: 2px;"> <b>March 27<sup>th</sup></b>      Preble County         </div> <ul style="list-style-type: none"> <li>6 people attended the meeting in Preble County</li> <li>No formal comments were received; staff spoke with participants, took their input, and answered questions</li> </ul> <div data-bbox="1182 562 1474 779" style="text-align: center;">  </div>

***Meeting Content***

The meeting content for the RTP Public Participation meetings included a generalized overview of the goals and importance of the Regional Transportation Planning Organization. MVRPC staff presented in-person meeting information displayed on large posters, while the virtual meeting used a PowerPoint presentation with identical information. The complete meeting content included:

- RTPO Overview and Goals
- Existing Conditions Overview
- Safety Analysis for the Region
- Land Use and Environmental Resources in the Region
- Socioeconomic Trends, Environmental Justice, and LEP Populations
- Transportation Performance Management
- Future RTPO Projects, Fiscal Constraint

The 2050 RTP Public Participation Summary in Appendix A provides detailed information and documentation of the public participation process, as required for the RTPO Pilot Program. Information includes all public outreach materials created by MVRPC Staff, the information presented at each meeting, and comments received during the comment period.







# **Public Participation Meetings**

**March 25-27, 2024**



**Date:** March 25<sup>th</sup>, 2024, 5:00 p.m. – 6:00 p.m.  
March 26<sup>th</sup>, 2024, 12:00 p.m. – 1:00 p.m. (Virtual)  
March 26<sup>th</sup>, 2024, 5:00 p.m. – 6:00 p.m.  
March 27<sup>th</sup>, 2024, 5:00 p.m. – 6:00 p.m.

**Format:** Public Participation Meeting Presentation

**Location:** Darke, Preble, Shelby counties;  
Zoom Virtual Public Participation Meeting

**MVRPC Staff:**  
**Ana Ramirez**, *Director of Transportation Planning & Funding*  
**Brian O. Martin**, *Executive Director*  
**Chanda Davis**, *Public Outreach Coordinator*  
**Elle Benefiel**, *Transportation Planner*  
**Hannah Wilson**, *Transportation Planner*  
**Laura Henry**, *Director of Marketing and Public Outreach*

**Number of Attendees:** 25

<b>March 25</b>	<b>8</b>
<b>(Virtual) March 26</b>	<b>5</b>
<b>March 26</b>	<b>6</b>
<b>March 27</b>	<b>6</b>

**Comment Period:** March 11, 2024 – April 10, 2024

**Details:** The RTP Public Participation meetings were held at the end of March 2024 at various locations and times in each county in the Region. A virtual public participation meeting was held to present information on the Regional Transportation Plan contents, with MVRPC staff in attendance to address comments or questions from participants. MVRPC also made information available at its office during the public participation comment period.



# Meeting

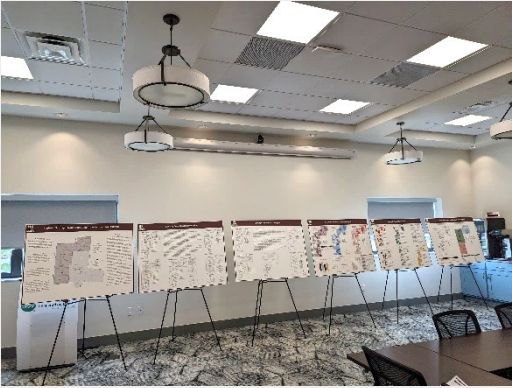
## Attendance List



**RTP Public Participation Meeting Participant List, Darke County**  
**March 25, 2024, 5:00 p.m. – 6:00 p.m.**

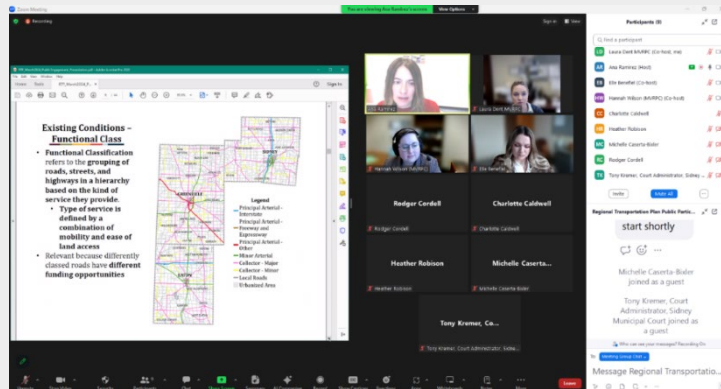
1. Michelle Caserta-Bixler
2. Sandy Hoying
3. Roger Brocius
4. Jim Surber
5. Connie
6. Carol Hathaway
7. Jim Poeppelman
8. Eileen Litchfield

Name	Email (Optional)	Organization
Michelle Caserta-Bixler	mcaserta@kennedyenergy.org	CE&E
Sandy Hoying		Darke County Economic Dev. Dist.
Carol Hathaway	CH@R13@Gmail.com	11
Jim Surber	msurber@delaware.com	Co-Eng.
Connie		
Carol Hathaway	11@kenecare1308.com	
JIM POEPELHAN		D C PARKS
EILEEN LITCHFIELD	eileenlitchfield@gmail.com	DC Parks



**RTP Public Participation Meeting Participant List, *Virtual (Zoom)***  
**March 26, 2024, 12:00 p.m. – 1:00 p.m.**

1. Charlotte Caldwell
2. Heather Robison
3. Rodger Cordell
4. Tony Kremer, Court Administrator, Sidney
5. Michelle Caserta-Bixler



**RTP Public Participation Meeting Participant List, *Shelby County***  
**March 26, 2024, 5:00 p.m. – 6:00 p.m.**

1. Ashley Garcia
2. Shelia Nuss
3. Mike Barhorst
4. Barbara Dulworth
5. Tony Bornhorst
6. Amy Schmidt



RTP Public Participation Meeting, Shelby County  
 March 26, 2024, 5:02 p.m. - 4:00 p.m.

Name	Email (optional)	Organization
Ashley Garcia	agarcia@shelbycountytexas.com	Tractor Protein
Shelia Nuss	shelia.nuss@shelbycountytexas.com	Blue Springs
Mike Barhorst	mbarhorst@shelbycountytexas.com	City of Sidney
Barbara Dulworth	bdulworth@shelbycountytexas.com	City of Sidney
TONY BORNHORST	bornhorst@shelbycountytexas.com	Small County Community
Amy Schmidt	schmidt@shelbycountytexas.com	Firebeck



**RTP Public Participation Meeting Participant List, Preble County**  
**March 27, 2024, 5:00 p.m. – 6:00 p.m.**

- 1. Rachael Vonderhaar
- 2. Robert Wood
- 3. Tim Geeting
- 4. Jeff Sewert
- 5. Matt Venable
- 6. Chelsea Hoyt

RTP Public Participation Meeting, Preble County  
March 27, 2024, 5:00 p.m. – 6:00 p.m.

Name	Email (Optional)	Organization
Rachael Vonderhaar	<a href="mailto:rvonderhaar@preble.org">rvonderhaar@preble.org</a>	Preble Co
Robert Wood	<a href="mailto:rwwood@preble.org">rwwood@preble.org</a>	Preble Co
Tim Geeting		Citizen
Jeff Sewert	<a href="mailto:Jeff.Sewert@kentucky.gov">Jeff.Sewert@kentucky.gov</a>	Village of Lewisburg
MATT VENABLE, MAYOR EATON	<a href="mailto:Matt.Venable@preble.com">Matt.Venable@preble.com</a>	CITY OF EATON
Chelsea Hoyt, CAP	<a href="mailto:Chelsea.Hoyt@preble.com">Chelsea.Hoyt@preble.com</a>	CAP



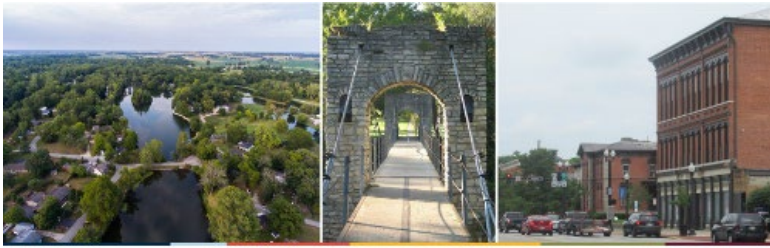




# Meeting

## Content





### March 2024 Public Meeting Regional Transportation Plan for Darke, Preble, and Shelby Counties



## Zoom Meeting Instructions

2. Click Raise Hand

2. Click Participants

1. Click Chat

3. Phone Only: press \*9

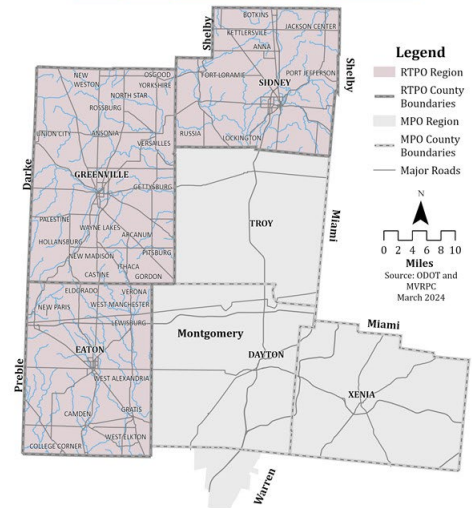
1. Type question or comment

### What is an RTPO?

- An organization that identifies local transportation needs, conducts planning, assists local governments, and supports the statewide transportation planning process in non-metropolitan regions of a state.
  - Would include Darke, Preble, and Shelby counties
- Adopting a Regional Transportation Plan is the first step to be designated as an RTPO.



### Geography of the Pilot RTPO



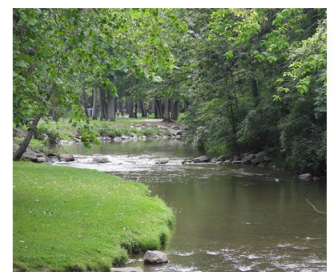
### Why is an RTPO Helpful?

- Increases Regional planning expertise
- Reduces individual county workload
- Facilitates more communication with the Ohio Department of Transportation (ODOT)
- Provides more baseline funding to the Region
  - Opens up more grant opportunities



### RTP Vision Statement

The Darke, Preble, and Shelby counties' Regional Transportation Plan strives to improve the multimodal transportation system in a manner that **supports enhanced accessibility and mobility for all people** and freight resulting in a higher quality of life for its residents and economic development opportunities for the Region.



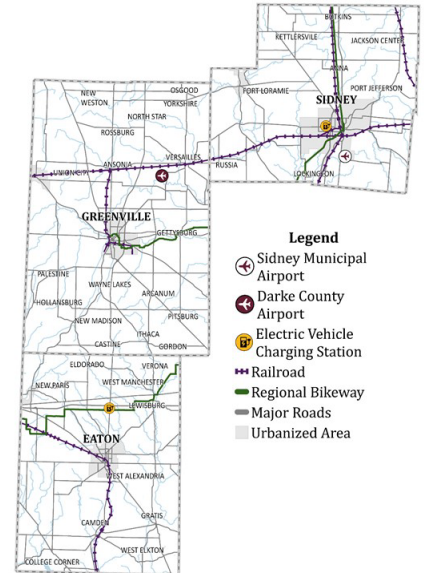
## Core RTPPO Goals

1. Safety
2. System Preservation
3. Mobility
4. Economic Development
5. Quality of Life
6. Stewardship



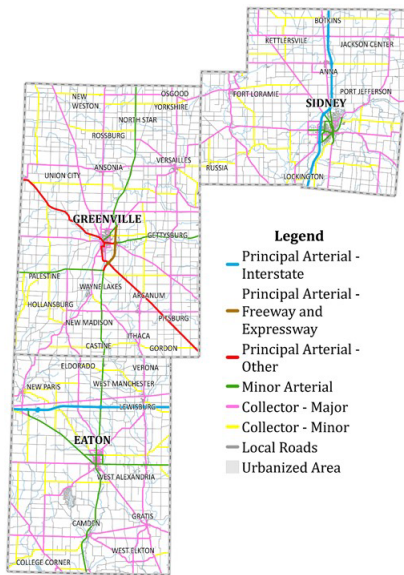
## Existing Conditions - Multimodal Facilities

- 2 small public airports
  - Darke County Airport
  - Sidney Municipal Airport
- Main bikeways
  - Ohio Bike Route 36
  - US Bike Route 25
  - US Bike Route 50
- Railroad infrastructure network for freight
  - 154.4 miles
- Public Fast Electric Vehicle Charger off Exit 10 on I-70 (in Preble County) and off Exit 92 on I-75 (in Shelby County)



## Existing Conditions - Functional Class

- **Functional Classification** refers to the grouping of roads, streets, and highways in a hierarchy based on the kind of service they provide.
  - Type of service is defined by a combination of mobility and ease of land access
- Relevant because differently classed roads have different funding opportunities

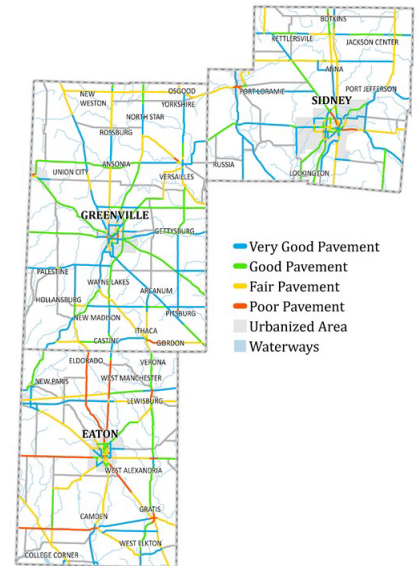


## Existing Conditions - Pavement Condition Rating

- Measures pavement quality
- **Higher score = better condition**
  - Rating of 100 means the pavement is brand new
- **Lower score means pavement is in worse condition**
  - Rating < 66 = poor condition
- **Pavement with lower ratings are prioritized for projects**

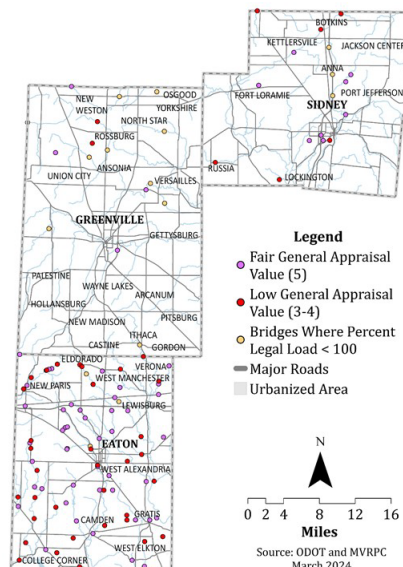


The pavement above has a "Fair" rating.



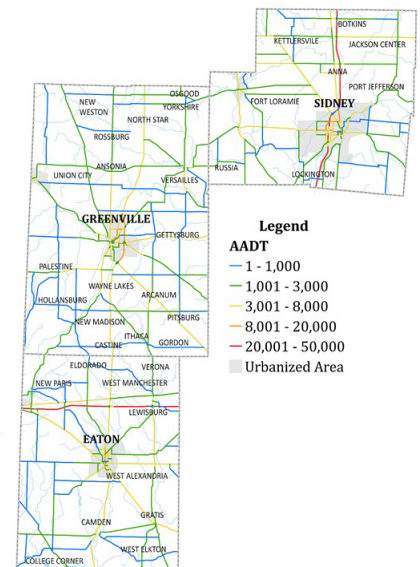
## Existing Conditions - Bridge Conditions

- Bridge condition is appraised yearly
  - 0-9 scale
    - Higher score = better
    - 9 is brand new
    - 0 is unusable and irreparable
  - Rating of 3 or 4 indicates poor condition
  - Rating of 5 is fair
- **Legal load** refers to the weight a bridge can safely hold
  - Legal load value below 100 indicates weight restrictions



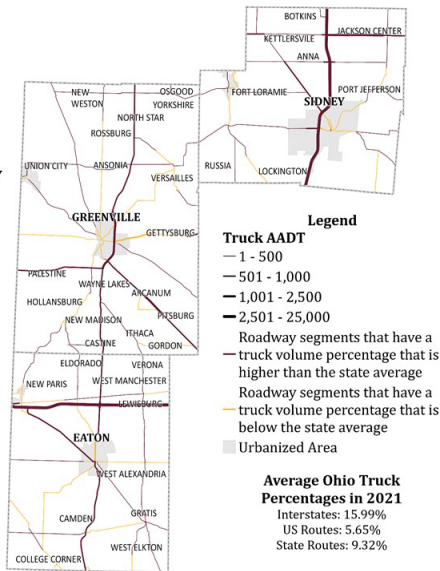
## Existing Conditions - Annual Average Daily Traffic (AADT)

- Annual Average Daily Traffic is a measure used to assess the amount of activity a given road receives.
- **Higher AADT values indicate busier roads** that receive more vehicular traffic
- **Only interstates** host an average of over 20,000 vehicles per day in the Region



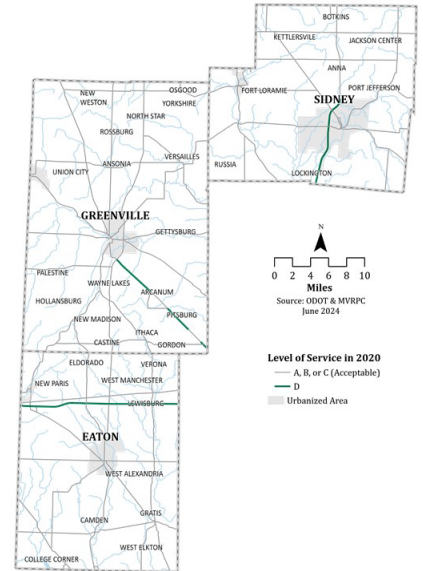
## Existing Conditions – Truck Annual Average Daily Traffic (AADT)

- Same as ADT, but purely focusing on trucks – which are a core economic driver in the Region
- **I-70 most common corridor for truck traffic**
- **I-75 and US-127 also have high levels of truck traffic**



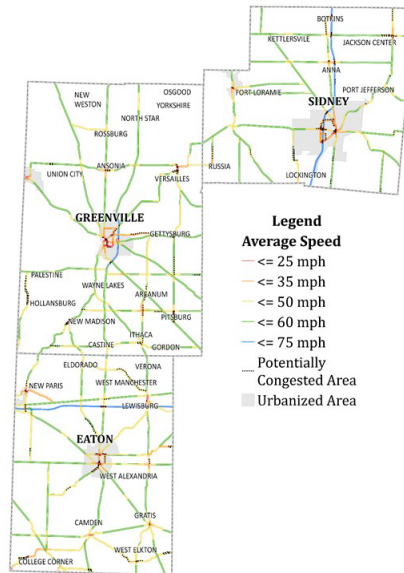
## Existing Conditions – Level of Service

- **Level of Service (LOS)** refers to **how driving conditions are like on a road**
  - Scale from A to F
  - **A means no congestion**, plenty of space to change lanes
  - **F means stand-still traffic**, commute times are much longer than expected



## Existing Conditions – Average Daily Speed

- **Average Daily Speed (ADS)** is a general measure of **how fast vehicles are moving on roadways**
- Highlights potential congestion
- **Suspected congestion occurs throughout the Region**
  - All county seat cities have suspected congestion



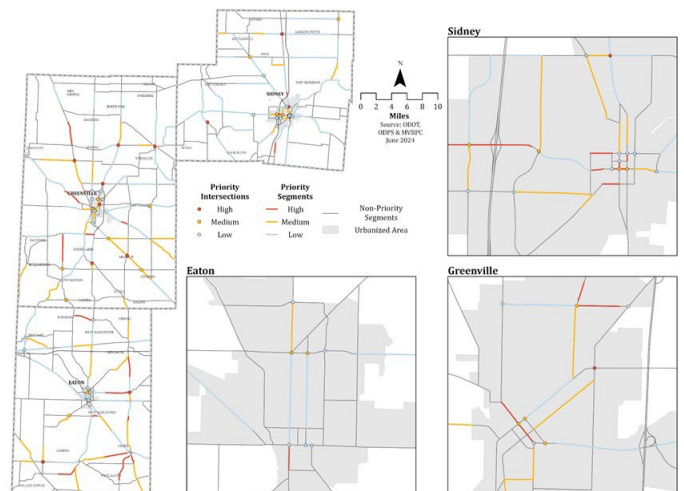
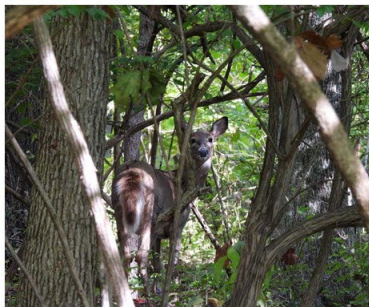
## Safety Analysis

- **9,726 crashes** reported in the Region from 2019-2021
- Crash amount substantially **decreased from 2019 to 2020**
- **Increased between 2020 and 2021**
- 2021 crash amount was **still lower** than 2019 crash numbers

County	Crashes			Grand Total
	2019	2020	2021	
Darke	1118	1027	1071	<b>3216</b>
Preble	979	775	850	<b>2604</b>
Shelby	1379	1232	1295	<b>3906</b>
<b>Grand Total</b>	<b>3476</b>	<b>3034</b>	<b>3216</b>	<b>9726</b>

## Safety Analysis

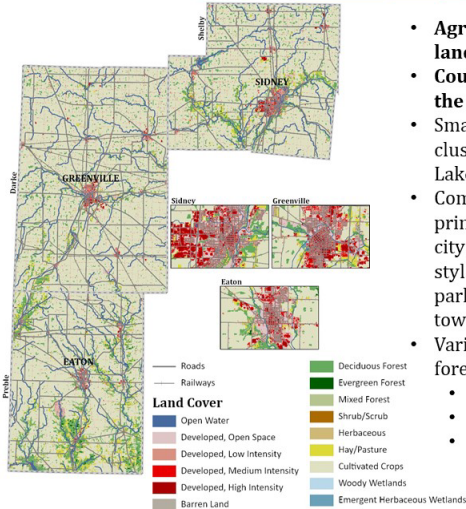
- **6,090 crashes** on non-freeway and local roads
- **Animals (like Deer)** were the **most common cause of crashes (23%)**
  - Followed by Fixed Object (20%) and Rear-End (15%)
- **Top contributing reasons for crashes were:**
  - 1. Driving off the road**
  - 2. Following too closely**



Priority segments and intersections were locations where severe injury and/or fatal crashes were high and/or crash numbers were high in general.

- **260 locations in total (12 intersections + 37 segments) were high priority**

## Land Use



- **Agriculture is the dominant land use**
- **County seats make up most of the developed land area**
- Smaller cities and towns are clustered near major roads and Lake Lakengren
- Commercial corridors consist primarily of walkable historic city/town centers, suburban-style shopping centers, and office parks on the edges of cities and towns.
- Various streams, rivers and forests exist in the Region
  - Great Miami River
  - Lake Lakengren
  - Hueston Woods
    - *and more*



## Environmental Resources

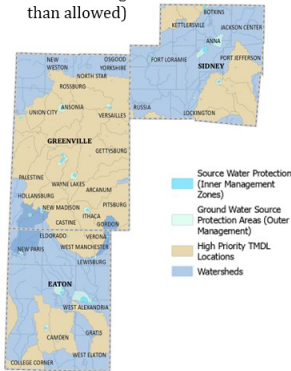
- Important because...
  - **Legislation** requires all federally funded projects to account for possible impacts to environmental resources within or around project areas.
  - **Stewardship** is one of the core RTPPO goals.



## Water Inventory in the Region

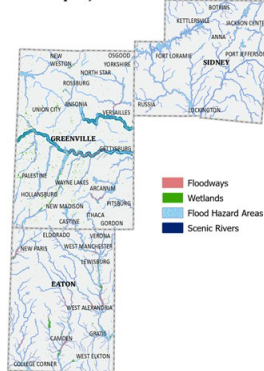
### Watersheds and Wellfields

- 3,700 acres of Wellfield Protection Areas
  - Related to groundwater protection
- 39 watershed areas monitored for pollution
  - At risk for higher levels of contaminants than allowed)



### Wetlands and Floodplains

- 7,000 acres of wetlands in total
- 2 scenic recreational rivers
- 35,000 acres of flood zones
  - Affects potential construction projects



## Parklands and Protected Areas



~3,400 acres of protected natural areas  
~10,300 acres of land for recreational use

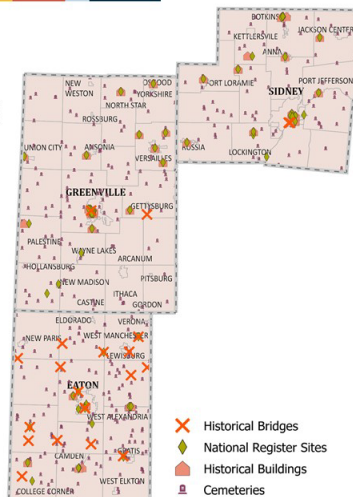
Important for:

- Promoting active lifestyles
- Improving quality of life
- Conservation of nature
- Protected from transportation (and other development) projects



## Historic and Cultural Resources

- 21 historic bridges
  - Preble County has the most (17)
- 65 sites listed on the National Register of Historic Places
  - 47 of the sites are buildings with historical significance
- ~380 cemeteries
- Arcanum Iron & Metal is the single superfund site in the Region (in Darke County)
  - Taken off the priority list in 2001

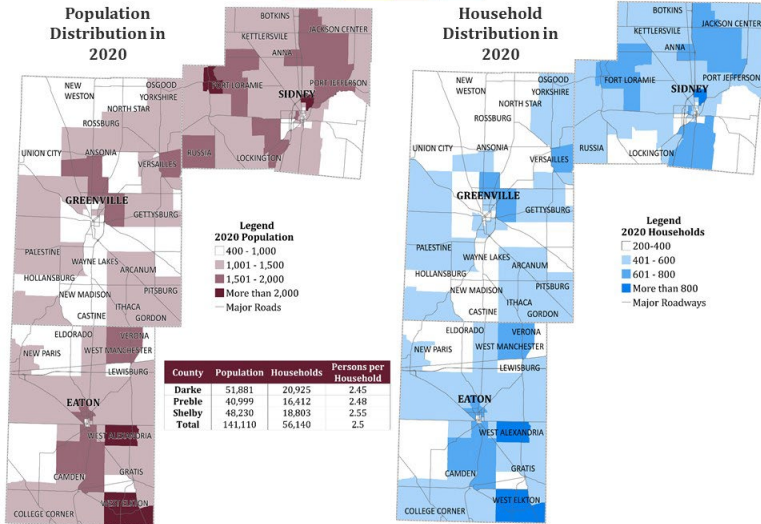


## Socioeconomic Trends

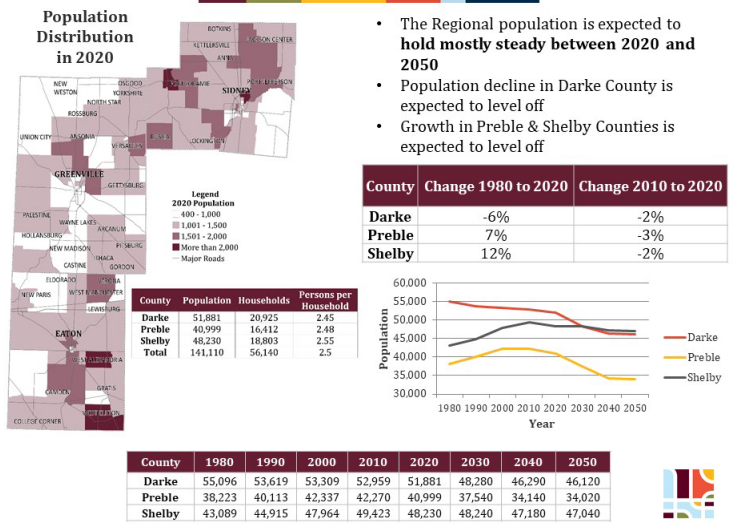
- Helps planners understand how, where, and why people in the Region use transportation in their day-to-day life.
- Can **highlight important areas, like core travel corridors, that should be focused on for improvement**
  - Knowing the largest employers in the Region can help pinpoint which corridors may need more attention for minimizing congestion



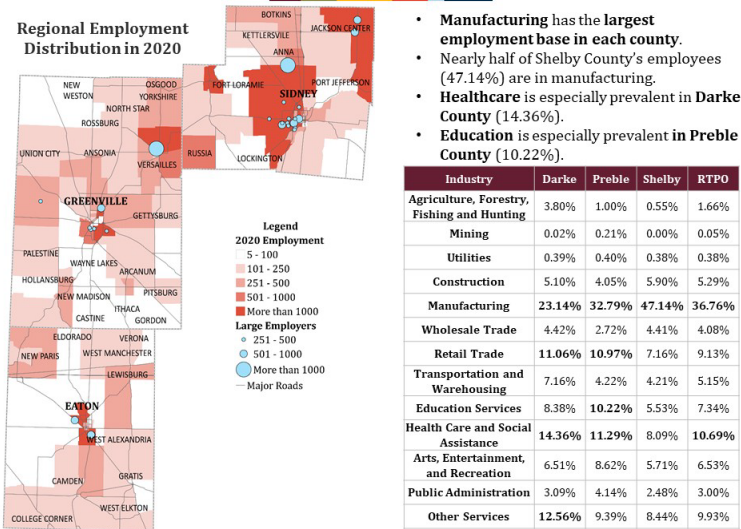
## Population & Households



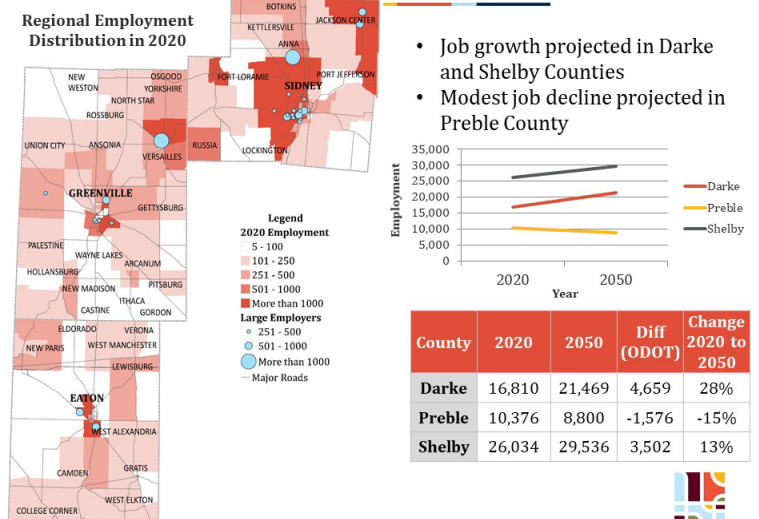
## Population Change & Projections



## Employment Sectors



## Employment Change & Projections



## Environmental Justice and Equity

Environmental Justice is defined as “the fair treatment and meaningful involvement of all people regardless of race, color, national origin, or income, with respect to the development, implementation, and enforcement of environmental laws, regulations, and policies” by the Environmental Protection Agency (EPA)

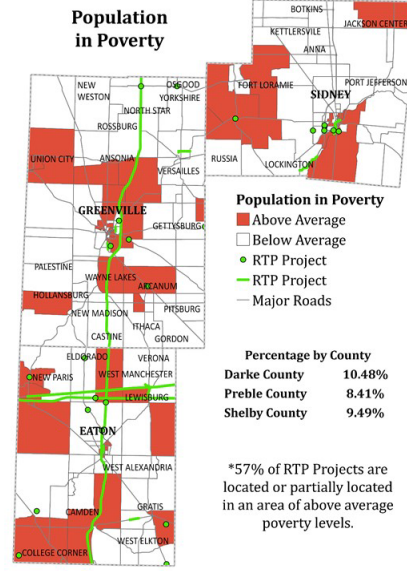
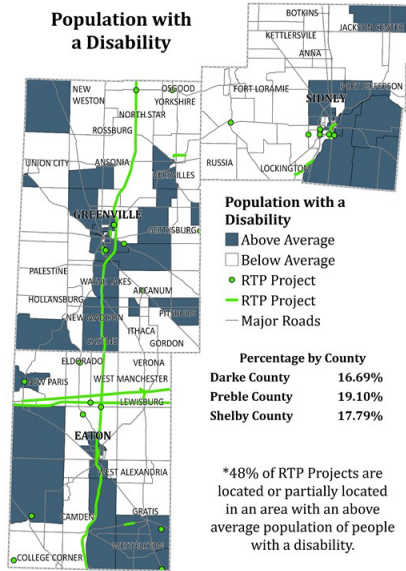


Equity is the **result** of Environmental Justice, and therefore ensures the equal treatment and involvement of all people, as well as equal access to available resources

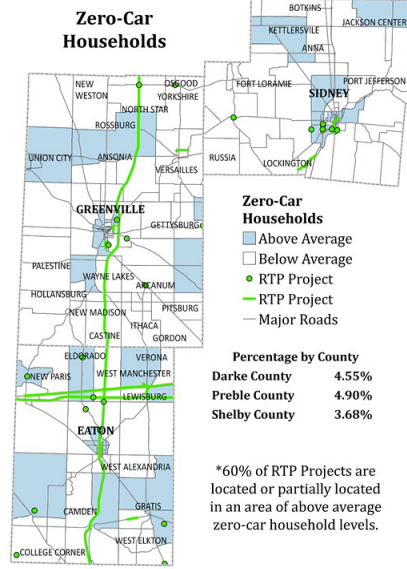
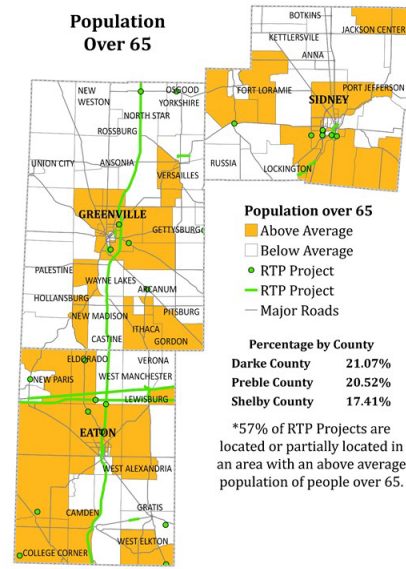
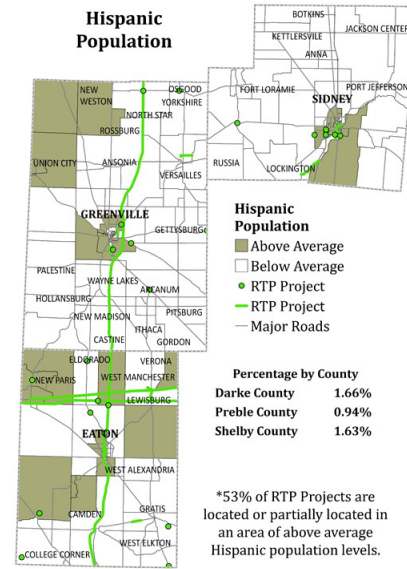
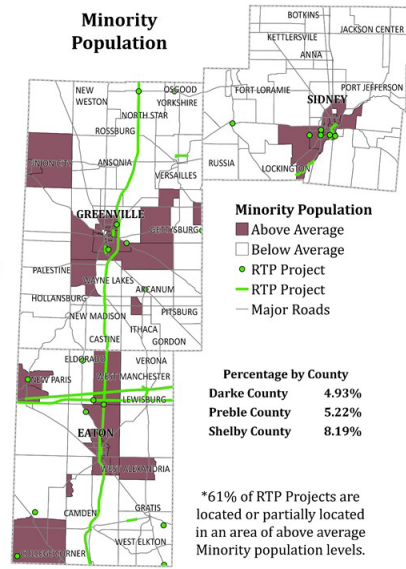
## Vulnerable Population Analysis

- MVRPC conducts assessments of vulnerable populations to ensure environmental justice and equity is at the forefront of transportation planning
- In addition to racial and ethnic minorities and persons in poverty, MVRPC has traditionally expanded its definition of vulnerable populations to include other traditionally disadvantaged groups, including persons with disabilities, the elderly, and households without automobiles.





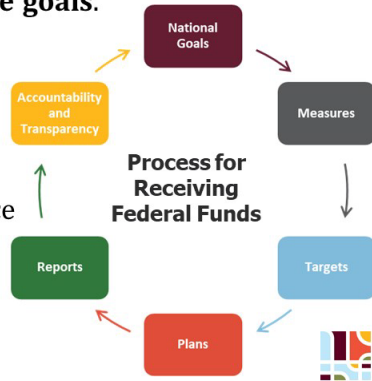
Minority populations were defined as “all persons of Races other than Caucasian”.





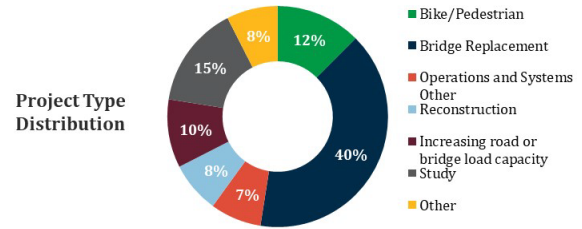
## Transportation Performance Management (TPM)

- TPM focuses on the **accurate usage of transportation system info** to make **investment and policy decisions** that align with **achieving national performance goals**.
- Three core goals:
  - Safety
  - Pavement and Bridge Conditions
  - System Performance

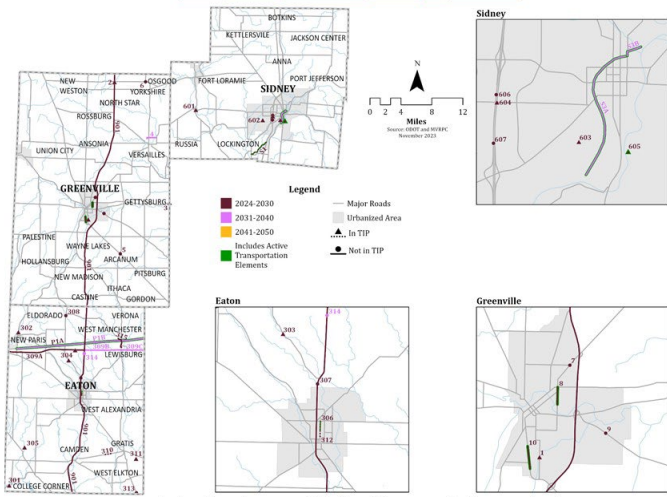


## Future Projects

- Generally the transportation plan focuses on larger projects:
  - Lane additions
  - Intersection improvements
  - Safety projects
  - New bikeways
- Includes all modes of transportation (Highway, bike/pedestrian/transit)
- Transit tends to focus on funding (capital and operating resources) rather than specific projects



## Regional Transportation Plan Projects



Includes Roadway and Active Transportation projects

## Financial Projections for Regional Projects between SFY 2024 and 2050

Fiscal Period	SFY 2024-2030	SFY 2031-2040	SFY 2041-2050	Full Plan
<b>Total Project Cost (YoE dollars)</b>	\$206,096,845	\$369,705,738	\$0*	\$575,802,583
<b>Revenue Total (YoE dollars)</b>	\$208,702,100	\$396,406,555	\$109,205,510	\$605,086,465
<b>Difference (YoE dollars)</b>	+\$2,605,255	+\$26,700,817	+\$109,205,510	+\$29,283,882

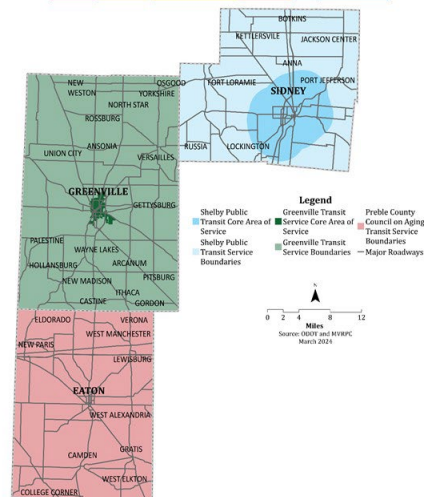
\*The cost projection for the 2041-2050 period is \$0 due to no projects being allocated to that time range.

## Public Transit in the Region

- Greenville Transit System (GTS)
  - Focus on City of Greenville in Darke County
- Shelby Public Transit
  - Provides public transit throughout Shelby County
- Preble County Council on Aging
  - Originally served adults over the age of 60
  - Working on becoming a public transit agency



## Transit Agency Service Range



## Transit Fiscal Constraint

These are rough estimates– particularly for the Preble County Transit System that has just recently begun serving the wider community.

Agency	Short Term Plan (SFY 2024-2030)	Intermediate Term Plan (SFY 2031-2040)	Long Term Plan (SFY 2041-2050)	Full Plan (SFY 2024-2050)
Greenville Transit System Total (YoE dollars)	\$8,019,614	\$13,873,208	\$17,415,392	\$39,308,214
Shelby Transit System Total (YoE dollars)	\$7,556,944	\$13,072,831	\$16,410,657	\$37,040,432
Preble Transit System (PCCoA) Total (YoE dollars)	\$5,616,300	\$9,715,692	\$12,196,356	\$27,528,348
Regional Total Cost Total (YoE dollars)	\$21,192,858	\$36,661,732	\$46,022,405	\$103,876,995
Regional Total Revenue Total (YoE dollars)	\$19,422,078	\$32,833,743	\$40,024,150	\$92,279,971
Funding Gap Total (YoE dollars)	-\$1,770,780	-\$3,827,988	-\$5,998,255	-\$11,597,024



**MIAMI VALLEY**  
Regional Planning Commission

[rtpo.mvrpc.org](http://rtpo.mvrpc.org)

Ana Ramirez

[aramirez@mvrpc.org](mailto:aramirez@mvrpc.org)

Elle Benefiel

[ebenefiel@mvrpc.org](mailto:ebenefiel@mvrpc.org)

Hannah Wilson

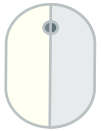
[hwilson@mvrpc.org](mailto:hwilson@mvrpc.org)

# PUBLIC COMMENT REQUEST

for the Darke-Preble-Shelby counties  
2050 Regional Transportation Plan.

Comments will be accepted  
until April 10, 2024.

## Submit your comments:



Online at [rtpo.mvrpc.org](https://rtpo.mvrpc.org)



Via email at [aramirez@mvrpc.org](mailto:aramirez@mvrpc.org).



Fill out comment form and place in comment box.



## RTPO PILOT PROGRAM

HOME // TRANSPORTATION // RTPO PILOT PROGRAM

Long Range Planning (LRTP) ↓

Short Range Plan (TIP) ↓

Transportation Financing

**RTPO Pilot Program ↑**

RTPO Meetings

RTPO Transportation Safety

Safety resources

Greater Region Mobility Initiative (GRMI)

Bikeways & Pedestrians ↓

Miami Valley Rideshare

Drive Less Live More

Public Education Campaigns

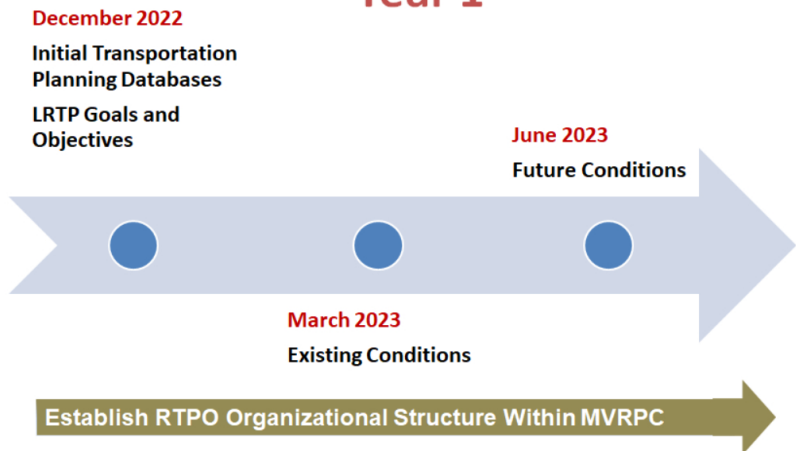
Miami Valley Roads

In 2013, ODOT initiated the Regional Transportation Planning Organization (RTPO) pilot program to assist multi-county rural regional planning organizations in developing transportation plans and overall transportation planning expertise amongst RTPO staff. Since then six agencies have officially been designated as RTPOs by the Governor.

MVRPC is excited to be a new participant in the RTPO pilot program working with its rural members in Darke, Preble, and Shelby Counties to advance transportation planning and partnerships that will benefit both ODOT and the member governments of the RTPO.

The first step towards achieving official RTPO designation is the development of a Regional Transportation Plan. For details on the process, see the [scope document](#) for SFY 2022-2023. The development of the Regional Transportation Plan will proceed along the timeline depicted below.

### RTPO Pilot Scope and Schedule Year 1



### RTPO Pilot Scope and Schedule Year 2



**Meeting Information:**

MVRPC is holding a public participation meeting to present the draft Regional Transportation Plan for the Darke-Preble-Shelby Region on **March 25, 26, and 27, 2024, from 5:00 p.m. – 6:00 p.m.** in each county in the Region.

The information provided below will also be presented at a virtual public meeting on Tuesday, **March 26, 2024 from**

12:00 p.m. – 1:00 p.m. via Zoom.

**Schedule:**

**Monday, March 25, 2024 from 5:00 p.m. to 6:00 p.m.**

Marke Rural Electric Facility  
1120 Fort Jefferson Avenue, Greenville, OH

**Tuesday, March 26, 2024 from 12:00 p.m. to 1:00 p.m.**

Access the meetings via computer, tablet or mobile device using this link:

<https://us02web.zoom.us/j/82725093290>

Enter Meeting ID: 827 2509 3290

Or call in to join the meeting by phone:

(646) 558-8656 - Meeting ID: 827 2509 3290# US (New York)

(301) 715-8592 - Meeting ID: 827 2509 3290# US (Washington D.C.)

Participation via computer, tablet or mobile device using the link above is encouraged to take advantage of Zoom on-screen meeting features even if relying on the phone for audio functions.

**Tuesday, March 26, 2024 from 5:00 p.m. to 6:00 p.m.**

Shelby County Agriculture Center  
820 Fair Road, Sidney, OH

**Wednesday, March 27, 2024 from 5:00 p.m. to 6:00 p.m.**

Preble County Fairgrounds - Expansion Building  
722 South Franklin Street, Eaton, OH

**Documents and Links:**

[RTP Virtual Meeting Slide PDF](#)

[RTP Report Draft PDF](#)

[Project List PDF](#)

[Project Map](#)

[Transit Service Area Map PDF](#)

Please leave comments using this [COMMENT FORM](#) or email [aramirez@mvrpc.org](mailto:aramirez@mvrpc.org).

## DRAFT REGIONAL TRANSPORTATION PLAN COMMENT FORM

DRAFT Regional Transportation Plan

Would you like a written response to your comment?

no

yes

If yes, please fill out the contact information below.

### Contact Information

Would you like a written response to your comment? If yes, then fill out the contact information below

Name

Address

City

State

Ohio

Zip

Email



# Meeting

Comments Received





(Optional Contact Information)

APR 04 2024

Name: MIKE BACHORST

Public Meeting Date: MARCH 26, 2024

Address: 201 WEST POPLAR STREET

Darke - Preble - Shelby

City/State/Zip: SIDNEY OH 45365

Topic: 2050 Regional Transportation Plan

Phone: 937.441.1411

Email Address: mbachorst@sidneyoh.com

Would you like to be added to the Darke - Preble - Shelby Transportation Planning Public Participation Contact List? Yes or No? (If you answered yes, please provide contact information. E-mail is preferred.)

Would you like a written response to your comment? Yes or No?

Comment(s): RECREATIONAL TRAIL CONNECTIVITY IS ESSENTIAL

WIDEN I-75 TO THREE LANES

(Optional Contact Information)

Name: Kari Egbert  
Address: 6970 Cardo Rd.  
City/State/Zip: Sidney, OH 45365  
Phone: \_\_\_\_\_  
Email Address: \_\_\_\_\_

APR 04 2024

Public Meeting Date: \_\_\_\_\_  
Topic: Darke - Preble - Shelby  
2050 Regional Transportation Plan

Would you like to be added to the Darke - Preble - Shelby Transportation Planning Public Participation Contact List? Yes or No? (If you answered yes, please provide contact information. E-mail is preferred.)

Would you like a written response to your comment? Yes or No?

Comment(s): My husband and I recently purchased new bicycles and one of our first stops was the Canal Feeder Trail in Sidney. What a fantastic local asset! We are looking forward to the extension under #75, but would love to see the trail connect to Piqua.

We have several friends who use the Piqua trail frequently & it would be fantastic to meet up with them using the trail. ~~The~~ Some of them have started in Piqua and biked all the way to Hamilton County!

Extension of the trail to Sidney would be an added benefit for local tourism, beyond just the region.

# **Outreach**

**Public Notices, Announcements, and  
Proof of Publication**



# NEWS

## RECENT NEWS

### MVRPC will hold public participation meetings for the Darke-Preble-Shelby counties 2050 Regional Transportation Plan.

Dateline:

March 11, 2024

Meetings will be held from 5:00 p.m. - 6:00 p.m. on March 25 in Darke County, March 26 in Shelby County and March 27 in Preble County and a Virtual Meeting on March 26 from 12:00 p.m - 1:00 p.m.

### MVRPC Board of Directors elected the new Executive Committee and ISC Steering Committee for 2024-2025

Dateline:

March 08, 2024

Elections were held on Thursday, March 7, 2024, following the regular monthly meeting. Members of the committee will serve one term, beginning April 2024 through March 2025.

### Virtual Public Participation Meeting to be held regarding the DRAFT Public Participation Policy Update

Dateline:

February 22, 2024

MVRPC will hold a virtual Public Participation Meeting to review the Draft Public Participation Policy Update on March 14, 2024. 5:00 p.m. - 6:00 p.m.

## MVRPC will hold public participation meetings for the Darke-Preble-Shelby counties 2050 Regional Transportation Plan.

Monday, March 11th, 2024

**Dayton, OH** – The Miami Valley Regional Planning Commission (MVRPC) will hold public participation meetings for the Darke-Preble-Shelby counties 2050 Regional Transportation Plan (RTP). The RTP strives to improve the multimodal transportation system in a manner that supports enhanced accessibility and mobility for all people and freight resulting in a higher quality of life for its residents and economic development opportunities for the Region.



MVRPC is excited to be a new participant in the Regional Transportation Planning Organization (RTPO) pilot program working with its rural members in Darke, Preble, and Shelby Counties to advance transportation planning and partnerships that will benefit both ODOT and the member governments.

The public meetings will take place in-person in Darke, Shelby, and Preble counties and virtually on Zoom:

**Monday, March 25, 2024 from 5:00 p.m. to 6:00 p.m.**

Darke Rural Electric Facility  
1120 Fort Jefferson Avenue, Greenville, OH

**Tuesday, March 26, 2024 from 12:00 p.m. to 1:00 p.m.**

Access the meetings via computer, tablet or mobile device using this link:

<https://us02web.zoom.us/j/82725093290>  
Enter Meeting ID: 827 2509 3290

Or call in to join the meeting by phone:

(646) 558-8656 - Meeting ID: 827 2509 3290# US (New York)  
(301) 715-8592 - Meeting ID: 827 2509 3290# US (Washington D.C.)

Participation via computer, tablet or mobile device using the link above is encouraged to take advantage of Zoom on-screen meeting features even if relying on the phone for audio functions.

**Tuesday, March 26, 2024 from 5:00 p.m. to 6:00 p.m.**

Shelby County Agriculture Center  
820 Fair Road, Sidney, OH

**Wednesday, March 27, 2024 from 5:00 p.m. to 6:00 p.m.**

Preble County Fairgrounds - Expansion Building  
722 South Franklin Street, Eaton, OH

MVRPC staff will accept comments and answer questions. If you are unable to attend, information will also be available for public review on MVRPC's website at [tpo.mvrpc.org](http://tpo.mvrpc.org) and at the MVRPC offices, 10 North Ludlow St., Suite 700, Dayton, OH, 45402, during regular business hours (8:00 a.m. – 5:00 p.m., Monday through Friday).

Written comments regarding the DRAFT plan will be accepted at the above address, web address, or via email at [aramirez@mvrpc.org](mailto:aramirez@mvrpc.org) until April 10, 2024.

Public participation is solicited without regard to race, color, sex, age, national origin or disability. MVRPC is committed to providing access

## CALENDAR OF EVENTS

← MARCH 2024 →						
S	M	T	W	T	F	S
					1	2
3	4	5	6	7	8	9
10	11	12	13	14	15	16
17	18	19	20	21	22	23
24	25	26	27	28	29	30
31						

## UPCOMING EVENTS

### Water & Environment Subcommittee Meeting March 2024

[Wednesday, March 13th, 2024](#)

This will be a virtual meeting; a Zoom link will be provided.

### Virtual Public Participation Meeting to be held regarding the DRAFT Public Participation Policy Update

[Thursday, March 14th, 2024](#)

MVRPC will hold a virtual Public Participation Meeting to review the Draft Public Participation Policy Update on March 14

### TAC Meeting March 2024

[Thursday, March 21st, 2024](#)

In-person meeting with the Technical Advisory Committee.

### Darke County Meeting for the public participation meetings for the Darke-Preble-Shelby counties 2050 Regional Transportation Plan.

[Monday, March 25th, 2024](#)

Darke Rural Electric Facility  
1120 Fort Jefferson Avenue, Greenville, OH

reasonable effort to ensure that it is accessible to persons with disabilities and inclusion and reasonable accommodation in its services, activities, programs and employment opportunities in accordance with the Americans with Disabilities Act (ADA) and other applicable laws. To request a reasonable accommodation due to a disability, or language interpretation or translation services to participate in this meeting, please contact, Laura Dent, Director of Marketing and Public Outreach, at 937-531-6542, 1-800-750-0750 TTY/TDD, and [LHenry@mvrpc.org](mailto:LHenry@mvrpc.org) no later than March 18, 2024.

Established in 1964, the Miami Valley Regional Planning Commission promotes collaboration among communities, stakeholders, and residents to advance regional priorities. MVRPC is a forum and resource where the Board of Directors identifies priorities and develops public policy and collaborative strategies to improve the quality of life throughout the Miami Valley Region.

MVRPC performs planning and research functions for our Region that ensure livable and equitable communities; clean air and water; robust roadway, transit, and active transportation options; and strategic community plans that chart the course for member communities and partners. MVRPC's geographic area includes Darke, Greene, Miami, Montgomery, Preble, Shelby, and northern Warren counties.

###

---

AFFP

# Affidavit of Publication

STATE OF OHIO } SS  
COUNTY OF DARKE }

MAR 14 2024

Diana Sleppy, being duly sworn, says:

That she is Customer Service/Sales of the EARLY BIRD, a weekly newspaper of general circulation, printed and published in GREENVILLE, DARKE County, OHIO; that the publication, a copy of which is attached hereto, was published in the said newspaper on the following dates:

Mar 9, 2024

That said newspaper was regularly issued and circulated on those dates.

SIGNED:

*Diana Sleppy*

Subscribed to and sworn to me this 9th day of Mar 2024

*Teresa S. Ketring*  
Teresa S. Ketring, DARKE County, OHIO

My commission expires: April 1, 2024

\$ 152.00



Teresa S. Ketring  
Notary Public-State of Ohio  
My Comm. Exp. 4-1-24

50021320 90188740 937-223-6323

MIAMI VALLEY REGIONAL COMMISSION

10 North Ludlow Street  
Suite 700  
Dayton, OH 454021855

The Miami Valley Regional Planning Commission (MVRPC) will hold public participation meetings for the Darke-Preble-Shelby counties 2050 Regional Transportation Plan (RTP). The RTP strives to improve the multimodal transportation system in a manner that supports enhanced accessibility and mobility for all people and freight resulting in a higher quality of life for its residents and economic development opportunities for the Region.

MVRPC is excited to be a new participant in the Regional Transportation Planning Organization (RTPO) pilot program working with its rural members in Darke, Preble, and Shelby Counties to advance transportation planning and partnerships that will benefit both ODOT and the member governments.

The public meetings will take place in-person in Darke, Shelby, and Preble counties and virtually on Zoom:

**Monday, March 25, 2024 from 5:00 p.m. to 6:00 p.m.**

Darke Rural Electric Facility  
1120 Fort Jefferson Avenue, Greenville, OH

**Tuesday, March 26, 2024 from 12:00 p.m. to 1:00 p.m.**

Access the meetings via computer, tablet or mobile device using this link:

<https://us02web.zoom.us/j/82725093290>  
Enter Meeting ID: 827 2509 3290

Or call in to join the meeting by phone:

(646) 558-8656 - Meeting ID: 827 2509 3290#  
US (New York)  
(301) 715-8592 - Meeting ID: 827 2509 3290#  
US (Washington D.C.)

Participation via computer, tablet or mobile device using the link above is encouraged to take advantage of Zoom on-screen meeting features even if relying on the phone for audio functions.

**Tuesday, March 26, 2024 from 5:00 p.m. to 6:00 p.m.**

Shelby County Agriculture Center  
820 Fair Road, Sidney, OH

**Wednesday, March 27, 2024 from 5:00 p.m. to 6:00 p.m.**

Preble County Fairgrounds - Expansion Building  
722 South Franklin Street, Eaton, OH

MVRPC staff will accept comments and answer questions. If you are unable to attend, information will also be available for public review on MVRPC's website at [tpo.mvrpc.org](http://tpo.mvrpc.org) and at the MVRPC offices, 10 North Ludlow St., Suite 700, Dayton, OH, 45402, during regular business hours (8:00 a.m. - 5:00 p.m., Monday through Friday). Written comments regarding the DRAFT plan will be accepted at the above address, web address, or via email at [aramirez@mvrpc.org](mailto:aramirez@mvrpc.org) until April 10, 2024.

Public participation is solicited without regard to race, color, sex, age, national origin or disability. MVRPC is committed to providing access and inclusion and reasonable accommodation in its services, activities, programs and employment opportunities in accordance with the Americans with Disabilities Act (ADA) and other applicable laws. To request a reasonable accommodation due to a disability, or language interpretation or translation services to participate in this meeting, please contact, Laura Dent, Director of Marketing and Public Outreach, at 937-531-6542, 1-800-750-0750 TTY/TDD, and [LHenry@mvrpc.org](mailto:LHenry@mvrpc.org) no later than March 18, 2024.

March 9  
90188740 geb

AFFP

# Affidavit of Publication

STATE OF OHIO ) SS  
COUNTY OF SHELBY )

MAR 14 2024

Diana Sleppy, being duly sworn, says:

That she is Customer Service/Sales of the SIDNEY DAILY NEWS, a daily newspaper of general circulation, printed and published in SIDNEY, SHELBY County, OHIO; that the publication, a copy of which is attached hereto, was published in the said newspaper on the following dates:

Mar 9, 2024

That said newspaper was regularly issued and circulated on those dates.

SIGNED:

Subscribed to and sworn to me this 9th day of Mar 2024

Teresa S. Ketring, SHELBY County, OHIO

My commission expires: April 1, 2024

\$ 435.16

50021320 90188738 937-223-6323

MIAMI VALLEY REGIONAL COMMISSION

10 North Ludlow Street  
Suite 700  
Dayton, OH 454021855

The Miami Valley Regional Planning Commission (MVRPC) will hold public participation meetings for the Darke-Preble-Shelby counties 2050 Regional Transportation Plan (RTP). The RTP strives to improve the multimodal transportation system in a manner that supports enhanced accessibility and mobility for all people and freight resulting in a higher quality of life for its residents and economic development opportunities for the Region.

MVRPC is excited to be a new participant in the Regional Transportation Planning Organization (RTPO) pilot program working with its rural members in Darke, Preble, and Shelby Counties to advance transportation planning and partnerships that will benefit both ODOT and the member governments.

The public meetings will take place in-person in Darke, Shelby, and Preble counties and virtually on Zoom:

**Monday, March 25, 2024 from 5:00 p.m. to 6:00 p.m.**  
Darke Rural Electric Facility  
1120 Fort Jefferson Avenue, Greenville, OH

**Tuesday, March 26, 2024 from 12:00 p.m. to 1:00 p.m.**  
Access the meetings via computer, tablet or mobile device using this link:

<https://us02web.zoom.us/j/82725093290>  
Enter Meeting ID: 827 2509 3290

Or call in to join the meeting by phone:

(646) 558-8656 - Meeting ID: 827 2509 3290# US (New York)  
(301) 715-6592 - Meeting ID: 827 2509 3290# US  
(Washington D.C.) ...

Participation via computer, tablet or mobile device using the link above is encouraged to take advantage of Zoom on-screen meeting features even if relying on the phone for audio functions.

**Tuesday, March 26, 2024 from 5:00 p.m. to 6:00 p.m.**  
Shelby County Agriculture Center  
820 Fair Road, Sidney, OH

**Wednesday, March 27, 2024 from 5:00 p.m. to 6:00 p.m.**  
Preble County Fairgrounds - Expansion Building  
722 South Franklin Street, Eaton, OH

MVRPC staff will accept comments and answer questions. If you are unable to attend, information will also be available for public review on MVRPC's website at [rpo.mvrpc.org](http://rpo.mvrpc.org) and at the MVRPC offices, 10 North Ludlow St., Suite 700, Dayton, OH, 45402, during regular business hours (8:00 a.m. - 5:00 p.m., Monday through Friday). Written comments regarding the DRAFT plan will be accepted at the above address, web address, or via email at [aramirez@mvrpc.org](mailto:aramirez@mvrpc.org) until April 10, 2024.

Public participation is solicited without regard to race, color, sex, age, national origin or disability. MVRPC is committed to providing access and inclusion and reasonable accommodation in its services, activities, programs and employment opportunities in accordance with the Americans with Disabilities Act (ADA) and other applicable laws. To request a reasonable accommodation due to a disability, or language interpretation or translation services to participate in this meeting, please contact, Laura Dent, Director of Marketing and Public Outreach, at 937-531-6542, 1-800-750-0750 TTY/ITDD, and [LHenry@mvrpc.org](mailto:LHenry@mvrpc.org) no later than March 18, 2024.

March 9  
90188738 sdn



Teresa S. Ketring  
Notary Public, State of Ohio  
My Comm. Exp. 4-1-24



AFFP

MAR 1 2 2024

# Affidavit of Publication

STATE OF OHIO ) SS  
COUNTY OF PREBLE )

Diana Sleppy, being duly sworn, says:

That she is Customer Service/Sales of the REGISTER-HERALD WKND ED., a weekly newspaper of general circulation, printed and published in EATON, PREBLE County, OHIO; that the publication, a copy of which is attached hereto, was published in the said newspaper on the following dates:

Mar 9, 2024

That said newspaper was regularly issued and circulated on those dates.

SIGNED:

*Diana Sleppy*

Subscribed to and sworn to me this 9th day of Mar 2024

*Teresa S. Ketrung*

Teresa S. Ketrung, PREBLE County, OHIO

My commission expires: April 1, 2024

\$ 238.48



Teresa S. Ketrung  
Notary Public - State of Ohio  
My Comm. Exp. 4-1-24

50021320 90188737 937-223-6323

MIAMI VALLEY REGIONAL COMMISSION

10 North Ludlow Street  
Suite 700  
Dayton, OH 454021855

The Miami Valley Regional Planning Commission (MVRPC) will hold public participation meetings for the Darke-Preble-Shelby counties 2050 Regional Transportation Plan (RTP). The RTP strives to improve the multimodal transportation system in a manner that supports enhanced accessibility and mobility for all people and freight resulting in a higher quality of life for its residents and economic development opportunities for the Region.

MVRPC is excited to be a new participant in the Regional Transportation Planning Organization (RTPO) pilot program working with its rural members in Darke, Preble, and Shelby Counties to advance transportation planning and partnerships that will benefit both ODOT and the member governments.

The public meetings will take place in-person in Darke, Shelby, and Preble counties and virtually on Zoom:

**Monday, March 25, 2024 from 5:00 p.m. to 6:00 p.m.**  
Darke Rural Electric Facility  
1120 Fort Jefferson Avenue, Greenville, OH

**Tuesday, March 26, 2024 from 12:00 p.m. to 1:00 p.m.**  
Access the meetings via computer, tablet or mobile device using this link:

<https://us02web.zoom.us/j/82725093290>  
Enter Meeting ID: 827 2509 3290

Or call in to join the meeting by phone:

(646) 558-8656 - Meeting ID: 827 2509 3290# US (New York)  
(301) 715-8592 - Meeting ID: 827 2509 3290# US (Washington D.C.)

Participation via computer, tablet or mobile device using the link above is encouraged to take advantage of Zoom on-screen meeting features even if relying on the phone for audio functions.

**Tuesday, March 26, 2024 from 5:00 p.m. to 6:00 p.m.**  
Shelby County Agriculture Center  
820 Fair Road, Sidney, OH

**Wednesday, March 27, 2024 from 5:00 p.m. to 6:00 p.m.**  
Preble County Fairgrounds - Expansion Building  
722 South Franklin Street, Eaton, OH

MVRPC staff will accept comments and answer questions. If you are unable to attend, information will also be available for public review on MVRPC's website at [rtpo.mvrpc.org](http://rtpo.mvrpc.org) and at the MVRPC offices, 10 North Ludlow St., Suite 700, Dayton, OH, 45402, during regular business hours (8:00 a.m. - 5:00 p.m., Monday through Friday). Written comments regarding the DRAFT plan will be accepted at the above address, web address, or via email at [aramirez@mvrpc.org](mailto:aramirez@mvrpc.org) until April 10, 2024.

Public participation is solicited without regard to race, color, sex, age, national origin or disability. MVRPC is committed to providing access and inclusion and reasonable accommodation in its services, activities, programs and employment opportunities in accordance with the Americans with Disabilities Act (ADA) and other applicable laws. To request a reasonable accommodation due to a disability, or language interpretation or translation services to participate in this meeting, please contact, Laura Dent, Director of Marketing and Public Outreach, at 937-531-6542, 1-800-750-0750 TTY/TDD, and [LHenry@mvrpc.org](mailto:LHenry@mvrpc.org) no later than March 18, 2024.

March 9  
90188737 erh wkend

# **Outreach**

**Press Release and List of Recipients**





## NEWS RELEASE

### For Immediate Release

**Date:** March 11, 2024

**Contact:** Laura Dent  
Director of Marketing and Public Outreach  
Miami Valley Regional Planning Commission  
(937) 223-6323  
[lhenry@mvrpc.org](mailto:lhenry@mvrpc.org)

**Subject:** MVRPC will hold public participation meetings for the Darke-Preble-Shelby counties 2050 Regional Transportation Plan.

**Dayton, OH** – The Miami Valley Regional Planning Commission (MVRPC) will hold public participation meetings for the Darke-Preble-Shelby counties 2050 Regional Transportation Plan (RTP). The RTP strives to improve the multimodal transportation system in a manner that supports enhanced accessibility and mobility for all people and freight resulting in a higher quality of life for its residents and economic development opportunities for the Region.

MVRPC is excited to be a new participant in the Regional Transportation Planning Organization (RTPO) pilot program working with its rural members in Darke, Preble, and Shelby Counties to advance transportation planning and partnerships that will benefit both ODOT and the member governments.

The public meetings will take place in-person in Darke, Shelby, and Preble counties and virtually on Zoom:

**Monday, March 25, 2024 from 5:00 p.m. to 6:00 p.m.**

Darke Rural Electric Facility  
1120 Fort Jefferson Avenue, Greenville, OH

**Tuesday, March 26, 2024 from 12:00 p.m. to 1:00 p.m.**

Access the meetings via computer, tablet or mobile device using this link:

<https://us02web.zoom.us/j/82725093290>

Enter Meeting ID: 827 2509 3290

Or call in to join the meeting by phone:

(646) 558-8656 - Meeting ID: 827 2509 3290# US (New York)

(301) 715-8592 - Meeting ID: 827 2509 3290# US (Washington D.C.)

Participation via computer, tablet or mobile device using the link above is encouraged to take advantage of Zoom on-screen meeting features even if relying on the phone for audio functions.

**Tuesday, March 26, 2024 from 5:00 p.m. to 6:00 p.m.**

Shelby County Agriculture Center  
820 Fair Road, Sidney, OH

**Wednesday, March 27, 2024 from 5:00 p.m. to 6:00 p.m.**

Preble County Fairgrounds - Expansion Building  
722 South Franklin Street, Eaton, OH

MVRPC staff will accept comments and answer questions. If you are unable to attend, information will also be available for public review on MVRPC's website at [rtpo.mvrpc.org](http://rtpo.mvrpc.org) and at the MVRPC offices, 10 North Ludlow St., Suite 700, Dayton, OH, 45402, during regular business hours (8:00 a.m. – 5:00 p.m., Monday through Friday). Written comments regarding the DRAFT plan will be accepted at the above address, web address, or via email at [aramirez@mvrpc.org](mailto:aramirez@mvrpc.org) until April 10, 2024.

Public participation is solicited without regard to race, color, sex, age, national origin or disability. MVRPC is committed to providing access and inclusion and reasonable accommodation in its services, activities, programs and employment opportunities in accordance with the Americans with Disabilities Act (ADA) and other applicable laws. To request a reasonable accommodation due to a disability, or language interpretation or translation services to participate in this meeting, please contact, Laura Dent, Director of Marketing and Public Outreach, at 937-531-6542, 1-800-750-0750 TTY/TDD, and [LHenry@mvrpc.org](mailto:LHenry@mvrpc.org) no later than March 18, 2024.

Established in 1964, the Miami Valley Regional Planning Commission promotes collaboration among communities, stakeholders, and residents to advance regional priorities. MVRPC is a forum and resource where the Board of Directors identifies priorities and develops public policy and collaborative strategies to improve the quality of life throughout the Miami Valley Region.

MVRPC performs planning and research functions for our Region that ensure livable and equitable communities; clean air and water; robust roadway, transit, and active transportation options; and strategic community plans that chart the course for member communities and partners. MVRPC's geographic area includes Darke, Greene, Miami, Montgomery, Preble, Shelby, and northern Warren counties.

## Media List

Adam Marshall	WHIO-TV Channel 7
Aimee Hancock	Cox First Media Inc. and Dayton Daily News
Abby Forbes	Sinclair Broadcasting
Ashley Bethard	Cox First Media Inc. and Dayton Daily News
Avery Kreemer	Dayton Daily News / Cox First Media
Ben McLaughlin	Cox First Media Inc. and Dayton Daily News
Braden Moles	Aim Media Midwest
-	WZLR (FM) 95.3
Brooke Moore	WDTN-TV Channel 2
Cory Earl	Dayton Business Journal
Cory Frolik	Cox Media Group
Caleb Stephens	Dayton Business Journal
Carl Suchomel	Miami Valley Communication Council
Dan Covey	AlphaMedia Dayton
-	Ohio News Network Radio
-	Dayton Business Journal
Brenda Coleman	Dayton Weekly News
-	Piqua Daily Call
Eric Schwartzberg	Cox First Media Inc. and Dayton Daily News
Fantine Kerckaert	WHIO-TV Channel 7
Gabrielle Enright	WHIO-TV Channel 7
Hannah Poturalski	Dayton Business Journal
-	Real Roots Radio
Jamie Jarosik	WDTN-TV Channel 2
Janet Davis	The Viking
Jason Michaels	Cox Radio Dayton
Jeff Stevens	WMMX (FM) 107.7 of iHeartMedia, Inc.
Jeremy Kelley	Cox First Media Inc. and Dayton Daily News
Jim Otte	WHIO-TV Channel 7
-	WHIO-TV Channel 7
Joe Mullins	Real Roots Radio
John Adams	WHIO-TV Channel 7
Josh Sweigart	Cox First Media Inc. and Dayton Daily News
Kayla McDermott	WHIO-TV Channel 7
Karla Boldery	La Mega Media
-	WGZ (FM) 92.9 of Alpha Media, LLC
Karen Rase	Aim Media Midwest
Letitia Perry	WHIO-TV Channel 7
Lynn Hulsey	Cox First Media Inc. and Dayton Daily News
Mark Allen	WDTN-TV Channel 2
Mason Flanigan	WDTN-TV Channel 2

Michael Purves	Cox Media Group
Michelle Alfini	Spectrum News
Melanie Speicher	Aim Media Midwest
Melody Vallieu	Aim Media Midwest
Nancy Wilson	WHKO (FM) 99.1
-	Cox Media Group Ohio - News Desk
-	Dayton Daily News
-	WBDT-TV CHANNEL 26
Nick Hirkman	Cox First Media Inc. and Dayton Daily News
Nick Roberts	WHIO (FM) 95.7
Nicole Mistretta	Dayton Business Journal
-	Daily Advocate
-	Early Bird (The)
Rebecca Gulden	Sinclair Broadcasting WKEF/DKEF-TV
Rich Gillette	Cox First Media Inc. and Dayton Daily News
-	WPTW (AM) 1570
Roy Hatfield	Real Roots Radio WBZI-WKFI-WEDI
Samantha Morris	Cox First Media Inc. and Dayton Daily News
Spectrum Editorial	Spectrum News 1 - Spectrum Reach
Suzanne Klopfenstein	Cox First Media Inc. and Dayton Daily News
Thomas Gnau	Cox Media Group
-	Versailles Policy Newspaper
-	WTGR (FM) 97.5
Zac Pitts	WDTN-TV Channel 2
-	Register-Herald (The)
Ed Richter	Cox First Media Inc. and Dayton Daily News
Gwyneth Faloon	Dayton 24/7 Now Sinclair Broadcasting
-	WKEF/DKEF-TV
-	WKEF/DKEF-TV
-	WHIO (AM) 1290
-	WHIO (FM) 95.7
-	WHIO-TV CHANNEL 7
Melanie Speicher - News Editor	Sidney Daily News
Reporter Meladie Brewer	Daily Advocate
Eddie Mowen	The Early Bird

## Contact List

AAA Allied Group, Ohio Valley	Ms. Kara Hitchens
Agape Distribution	Agape Distribution
Alpha Community Center, Shelby County	Jan Geuy
Alyssa's Breath, Shelby County	Connie Kerns
Alzheimer's Association, Miami Valley Chapter	T.J. Geise
American Red Cross, Greenville Office	Greenville Office
American Red Cross, Miami Valley Chapter	Lynne Gump
Angel Food Ministries	Eaton First Church of God
Arcanum Preservation Society	Administrative Office
Area Agency on Aging (West Central Ohio)	Nicole Khaner
Audubon Miami Valley (Preble and Butler Counties)	Administrative Office
Big Brothers Big Sisters of Shelby and Darke County	Katie Price
Big Brothers Big Sisters of the Miami Valley	Anne Pfeiffer
Brethren Retirement Community	Kara Allread
Bridges Community Action Partnership, Shelby County	Brianna Rutter
Castine Area Food Bank	Castine Church
Catholic Social Services (Mobility Manager)	Michelle Casserta-Bixler
Catholic Social Services of the Miami Valley	Kathy Sell
Cazadores Mexican Restaurant	Administrative Office
Center for Families (CSSMV)	Kathy Sell
Clear Creek Farm	Chad Gessler
Compassionate Care, Shelby County	Traci Milanese
Community Action Partnership, Darke County	Julie Lecklider
Community Action Partnership, Preble County	Janelle Caron
Community Foundation of Shelby County	Marian Spicer
Community Services for the Deaf (Miami Valley)	Administrative Office
Community Unity	Rev. Doug Klinsing
CORS - Gateway Youth Programs	Jeff Vaughn
Council on Rural Services Programs Inc.	Dan Schwanitz
Darke County Board of Developmental Disabilities	Tony Clark
Darke County Emergency Management Agency	Mindy Saylor
Darke County Extension Office (OSU)	Administrative Office
Darke County Fair Housing	Sally Keiser
Darke County Farm Service Agency	Claire Larson
Darke County Health District	T.L. Holman, DVM, REHS
Darke County Historical Society	Administrative Office
Darke County Home	Gracie Ratliff
Darke County Job & Family Services	Carla Allen
Darke County Metropolitan Housing Authority	Administrative Office
Darke County Parks	Roger Van Frank



Darke County Sheriff's Office	Mark Whittaker
Darke County Soil & Water	Jared Coppess
Darke County YMCA (Greenville)	Greenville Office
Darke County YMCA (Versailles)	YMCA, Versailles Branch
Eaton Fire & Emergency Services Department	Brian Smith
Eaton Police Department (Division)	Steven Hurd
Eckrele Administration Center, CCSMV	Kathy Sell
El Carreton Mexican Grill	Administrative Office
Environmental Education Council of Ohio	Brenda Metcalf
Epilepsy Foundation of Western Ohio	Administrative Office
Family Health Services of Darke County, Inc.	Administrative Office
Fiesta Charra	Administrative Office
First Presbyterian Church	Administrative Office
Five Rivers MetroParks	Administrative Office
Freshway Foods	Administrative Office
Grace Resurrection Community Center	Administrative Office
Greater Greenville Ministerial Association	Rev. Doug Klinsing
Greenville Fire Department	Russ Thompson
Greenville Police Department	Eric Roberts
Greenville Township Emergency Services	Brian Phillips
Greenville Transit System	Erin Kies
Habitat for Humanity, Preble County	Preble County HFH
Home is the Foundation (HIT)	H.I.T. Foundation
L&M Products	Office
La Carreta 3 Mexican Grill & Cantina	Administrative Office
Las Marias	Administrative Office
Loramie Valley Alliance (LVA)	Jason Bruns
Mercy Mission House	Emily Neu
Miami Conservancy District (MCD)	Administrative Office
Miami County Patrol Post	Lt. Allen
Mojitos Mexican Cuisine	Administrative Office
Montgomery County Patrol Post	Office
New Choices, Inc.	Danielle Sweitzer
Northern Counties Office, CSSMV	Kathy Sell
Ohio Chapter of the U.S. Department of Agriculture	Tim Smith
Ohio Chapter of the Worldwide Conservation Organization (The Nature Conservancy)	Administrative Office
Ohio Darke County Chapter of the U.S. Department of Agriculture	Ryan Kemper
Ohio Preble County Chapter of the U.S. Department of Agriculture	Jeff Barnes
Ohio Shelby County Chapter of the U.S. Department of Agriculture	Justin Wagner
Ohio Wetlands Association	Administrative Office
Preble County Board of Developmental Disabilities	Stephanie Garrett

Preble County Council on Aging	Robert Wood
Preble County Emergency Management Agency	Suzy Cottingim
Preble County Extension Office (OSU)	Administrative Office
Preble County Health District	George Henry, Ph.D.
Preble County Historical Society and Nature Reserve	Lisa White
Preble County Job & Family Services	Rebecah Sorrell
Preble County Metropolitan Housing Authority	Shea Glander
Preble County Sheriff's Office	Michael Simpson
Preble County YMCA	YMCA, Eaton Branch
Preble Soil & Water Conservation District	BJ Price
S&H Products	Office
Shelby County Board of Developmental Disabilities	Dallas Davis
Shelby County Emergency Management Agency	Kristy Fryman
Shelby County Extension Office (OSU)	Judie Gaerke
Shelby County Health District	Aaron Sargeant, DVM, Ph.D.
Shelby County Historical Society	Tida Phlipot
Shelby County Job & Family Services	Steven Pulfer
Shelby County Metropolitan Housing Authority	Shelby MHA
Shelby County Public Transit	Ron Schalow
Shelby County Sheriff's Office	James R. Frye
Shelby County Soil & Water Conservation District	Jason Bruns
Shelby County Veterans Service Commission	Theresa Manteuffel
Shelby County YMCA	YMCA, Sidney Branch
Sidney Fire & Emergency Services Department	Chad Hollinger
Sidney Police Department	Mark McDonough
Spirit Medical Transport	Brian K. Hathaway
Tacos Jalisco	Administrative Office
The Journey Home (Ohio)	Eldon Solomon
Three Valley Conservation Trust	Randy Evans
United Way, Darke County	Rebecca Cotterman
United Way, Preble County	Preble County United Way
United Way, Shelby County	Karla Young
Universal Transportation System (UTS) (Preble County)	Office
Victors Taco Shop, Sidney	Administrative Office
Your Happy Place	Office



# **Outreach**

**Posters & Letters to Libraries and  
Vulnerable/LEP Population**





# MIAMI VALLEY

Regional Planning Commission

10 North Ludlow St., Suite 700  
Dayton, Ohio 45402

t: 937.223.6323  
f: 937.223.9750  
TTY/TDD: 800.750.0750  
www.mvrpc.org

March 11, 2024

To Whom It May Concern:

**Our agency would like the libraries to make this letter available to citizens who may request it. In addition, please post the enclosed posters in a highly visible area to help advertise the meeting. These posters expire after the close of the comment period on April 10, 2024.**

**Dayton, OH** – The Miami Valley Regional Planning Commission (MVRPC) will hold public participation meetings for the Darke-Preble-Shelby counties 2050 Regional Transportation Plan (RTP). The RTP strives to improve the multimodal transportation system in a manner that supports enhanced accessibility and mobility for all people and freight resulting in a higher quality of life for its residents and economic development opportunities for the Region.

MVRPC is excited to be a new participant in the Regional Transportation Planning Organization (RTPO) pilot program working with its rural members in Darke, Preble, and Shelby Counties to advance transportation planning and partnerships that will benefit both ODOT and the member governments.

The public meetings will take place in-person in Darke, Shelby, and Preble counties and virtually on Zoom:

**Monday, March 25, 2024 from 5:00 p.m. to 6:00 p.m.**

Darke Rural Electric Facility  
1120 Fort Jefferson Avenue, Greenville, OH

**Tuesday, March 26, 2024 from 12:00 p.m. to 1:00 p.m.**

Access the meetings via computer, tablet or mobile device using this link:

<https://us02web.zoom.us/j/82725093290>

Enter Meeting ID: 827 2509 3290

Or call in to join the meeting by phone:

(646) 558-8656 - Meeting ID: 827 2509 3290# US (New York)

(301) 715-8592 - Meeting ID: 827 2509 3290# US (Washington D.C.)

Participation via computer, tablet or mobile device using the link above is encouraged to take advantage of Zoom on-screen meeting features even if relying on the phone for audio functions.

**Tuesday, March 26, 2024 from 5:00 p.m. to 6:00 p.m.**

Shelby County Agriculture Center  
820 Fair Road, Sidney, OH

**Wednesday, March 27, 2024 from 5:00 p.m. to 6:00 p.m.**

Preble County Fairgrounds - Expansion Building

722 South Franklin Street, Eaton, OH

MVRPC staff will accept comments and answer questions. If you are unable to attend, information will also be available for public review on MVRPC's website at [rtpo.mvrpc.org](http://rtpo.mvrpc.org) and at the MVRPC offices, 10 North Ludlow St., Suite 700, Dayton, OH, 45402, during regular business hours (8:00 a.m. – 5:00 p.m., Monday through Friday). Written comments regarding the DRAFT plan will be accepted at the above address, web address, or via email at [aramirez@mvrpc.org](mailto:aramirez@mvrpc.org) until April 10, 2024.

Public participation is solicited without regard to race, color, sex, age, national origin or disability. MVRPC is committed to providing access and inclusion and reasonable accommodation in its services, activities, programs and employment opportunities in accordance with the Americans with Disabilities Act (ADA) and other applicable laws. To request a reasonable accommodation due to a disability, or language interpretation or translation services to participate in this meeting, please contact, Laura Dent, Director of Marketing and Public Outreach, at 937-531-6542, 1-800-750-0750 TTY/TDD, and [LHenry@mvrpc.org](mailto:LHenry@mvrpc.org) no later than March 18, 2024.

Established in 1964, the Miami Valley Regional Planning Commission promotes collaboration among communities, stakeholders, and residents to advance regional priorities. MVRPC is a forum and resource where the Board of Directors identifies priorities and develops public policy and collaborative strategies to improve the quality of life throughout the Miami Valley Region.

MVRPC performs planning and research functions for our Region that ensure livable and equitable communities; clean air and water; robust roadway, transit, and active transportation options; and strategic community plans that chart the course for member communities and partners. MVRPC's geographic area includes Darke, Greene, Miami, Montgomery, Preble, Shelby, and northern Warren counties.



Regional Planning Commission

10 North Ludlow St., Suite 700  
Dayton, Ohio 45402

t: 937.223.6323  
f: 937.223.9750  
TTY/TDD: 800.750.0750  
mvrpc.org

*Dear business owner or community leader:*

The Miami Valley Regional Planning Commission (MVRPC) will hold public participation meetings for the Darke-Preble-Shelby counties Regional Transportation Plan.

MVRPC will use the Plan to advance transportation planning to benefit member governments, the residents of the Region, and the Ohio Department of Transportation (ODOT). MVRPC is seeking public comment on the Regional Transportation Plan, including the Spanish speaking population. We have included a transcribed Spanish poster in order to reach populations whose primary language is other than English. We respectfully ask that the RTP public participation notice posters be displayed in your business as a way to reach the community in the Region, including Spanish speaking community members. Doing so will allow everyone to participate in the public comment period and provide meaningful comments that allow MVRPC to better serve the community.

Thank-you for helping us reach a larger audience, if you have any questions please contact Ana Ramirez at [aramirez@mvrpc.org](mailto:aramirez@mvrpc.org)

---

Estimado dueño de negocio o líder comunitario:

La Comisión de Planificación Regional del Valle de Miami (MVRPC por sus siglas en ingles) llevará a cabo reuniones de participación pública para el Plan Regional de Transporte de los condados Darke-Preble-Shelby.

MVRPC utilizará el Plan para avanzar la planificación del transporte en beneficio a los gobiernos miembros, los residentes de la Región y el Departamento de Transporte de Ohio (ODOT por sus siglas en ingles). MVRPC busca comentarios públicos sobre el Plan de Transporte Regional, incluida la población de habla hispana. Hemos incluido un cartel en español para llegar a las poblaciones cuyo idioma principal no es el inglés. Respetuosamente solicitamos que los carteles de aviso de participación pública de RTP se exhiban en su negocio como una forma de llegar a la comunidad hispana de la Región. Hacerlo permitirá que todos participen en el período de comentarios públicos y proporcionen comentarios relevantes que permitan a MVRPC servir mejor a la comunidad.

Gracias por ayudarnos a llegar a una audiencia más amplia. Si tiene alguna pregunta, comuníquese con Ana Ramírez en [aramirez@mvrpc.org](mailto:aramirez@mvrpc.org)

*Celebrating 60 Years | 1964-2024*

Shaping Our Region's Future Together





# PUBLIC MEETINGS

## MVRPC will hold public participation meetings for the Darke-Preble-Shelby counties 2050 Regional Transportation Plan.

MVRPC will hold public participation meetings for the Darke-Preble-Shelby counties 2050 Regional Transportation Plan (RTP). The RTP strives to improve the multimodal transportation system in a manner that supports enhanced accessibility and mobility for all people and freight resulting in a higher quality of life for its residents and economic development opportunities for the Region.

The public meetings will take place in-person in Darke, Shelby, and Preble counties and virtually on Zoom:

**Tues., March 26, 2024 12:00 p.m. - 1:00 p.m.**

Access the meetings via computer, tablet or mobile device using this link:

<https://us02web.zoom.us/j/82725093290>

Enter Meeting ID: 827 2509 3290

Or call in to join the meeting by phone:

Meeting ID: 827 2509 3290#

(646) 558-8656 US (New York)

(301) 715-8592 US (Washington D.C.)

Participation via computer, tablet or mobile device using the link above is encouraged to take advantage of Zoom on-screen meeting features even if relying on the phone for audio functions.

After a brief summary of the DRAFT plan, MVRPC staff will accept comments and answer questions. If you are unable to attend, the information will also be available for public review on the MVRPC website at [rtpo.mvrpc.org](http://rtpo.mvrpc.org) and at the MVRPC's office. Written comments will be accepted until April 10, 2024.

**Mon., March 25, 2024 5:00 p.m. - 6:00 p.m.**

Darke Rural Electric Facility

1120 Fort Jefferson Avenue, Greenville, OH

**Tues., March 26, 2024 5:00 p.m. - 6:00 p.m.**

Shelby County Agriculture Center

820 Fair Road, Sidney, OH

**Wed., March 27, 2024 5:00 p.m. - 6:00 p.m.**

Preble County Fairgrounds - Expansion Building

722 South Franklin Street, Eaton, OH





# REUNIONES PÚBLICAS

## MVRPC llevará a cabo reuniones de participación pública para el Plan de Transporte Regional 2050 de los condados de Darke-Preble-Shelby.

MVRPC llevará a cabo reuniones de participación pública para el Plan de Transporte Regional 2050 (RTP) de los condados de Darke-Preble-Shelby. El RTP se esfuerza por mejorar el sistema de transporte multimodal de una forma que resulta en una mayor accesibilidad y movilidad para todas las personas y mercancías, al igual que en mayor calidad de vida para sus residentes y más oportunidades de desarrollo económico para la Región.

Las reuniones públicas se llevarán a cabo en persona en los condados de Darke, Shelby y Preble y virtualmente en Zoom:

### **Martes 26 de marzo de 2024**

**12:00 p.m. a 1:00 p.m.**

Acceda en un dispositivo usando este enlace:

<https://us02web.zoom.us/j/82725093290>

Enter Meeting ID: 827 2509 3290

O por teléfono:

Introduzca No. de reunión: 827 2509 3290#

(646) 558-8656 US (New York)

(301) 715-8592 US (Washington D.C.)

Se recomienda la participación a través de computadora, tableta o dispositivo móvil utilizando el enlace anterior para aprovechar las funciones de reunión en pantalla de Zoom, incluso si depende del teléfono para las funciones de audio.

Después de un breve resumen del BORRADOR del plan, el personal de MVRPC aceptará comentarios y responderá preguntas. Si no puede asistir, la información también estará disponible para revisión pública en el sitio web de MVRPC en [rtpo.mvrpc.org](http://rtpo.mvrpc.org) y en la oficina de MVRPC. Se aceptarán comentarios escritos hasta el 10 de abril de 2024.

### **Lunes 25 de marzo de 2024**

**5:00 p.m. a 6:00 p.m.**

Darke Rural Electric Facility

1120 Fort Jefferson Avenue, Greenville, OH

### **Martes 26 de marzo de 2024**

**5:00 p.m. a 6:00 p.m.**

Shelby County Agriculture Center

820 Fair Road, Sidney, OH

### **miércoles 27 de marzo de 2024**

**5:00 p.m. a 6:00 p.m.**

Preble County Fairgrounds - Expansion Building

722 South Franklin Street, Eaton, OH



## Poster List

Agape Distribution	Agape Distribution
Angel Food Ministries	Administrative Office
Big Brothers Big Sisters of Shelby and Darke County	Katie Price
Big Brothers Big Sisters of the Miami Valley	Anne Pfeiffer
Bridges Community Action Partnership, Shelby County	Brianna Rutter
Castine Area Food Bank	Castine Church
Catholic Social Services	Michelle Casserta-Bixler
Cazadores Mexican Restaurant	Administrative Office
Community Action Partnership, Darke County	Julie Lecklider
Community Action Partnership, Preble County	Janelle Caron
Community Foundation of Shelby County	Marian Spicer
Community Unity	Rev. Doug Klinsing
CORS - Gateway Youth Programs	Jeff Vaughn
Darke County Board of Developmental Disabilities	Tony Clark
Eckrele Administration Center, CCSMV*	Kathy Sell
El Carreton Mexican Grill	Administrative Office
Fiesta Charra	Administrative Office
First Presbyterian Church	Administrative Office
Grace Resurrection Community Center	Administrative Office
Greater Greenville Ministerial Association	Rev. Doug Klinsing
Greenville Transit System	Erin Kies
La Carreta 3 Mexican Grill & Cantina	Administrative Office
Las Marias	Administrative Office
Mojitos Mexican Cuisine	Administrative Office
Northern Counties Office, CSSMV	Kathy Sell
Preble County Board of Developmental Disabilities	Stephanie Garrett
Preble County Council on Aging	Robert Wood
Preble County YMCA	Administrative Office
Shelby County Board of Developmental Disabilities	Dallas Davis
Shelby County Public Transit	Ron Schalow
Shelby County YMCA	Administrative Office
Tacos Jalisco	Administrative Office
United Way, Darke County	Rebecca Cotterman
United Way, Preble County	Administrative Office
United Way, Shelby County	Karla Young
Universal Transportation System (UTS) (Preble County)	Administrative Office
Victors Taco Shop, Sidney	Administrative Office

## Libraries List

Arcanum Public Library	Darke
Bradford Public Library	Darke
Greenville Public Library	Darke
Preble County Public Library	Preble
West Elkton Branch Library	Preble
Anna Community Library	Shelby
Philip Sheets Family Botkins Community Library	Shelby
AJ Wise Ft. Loramie Community Library	Shelby
Jackson Center Memorial Community Library	Shelby
Russia Community Library	Shelby
Amos Memorial Public Library - Sidney	Shelby



# Outreach

Social Media



# Facebook

Boosted post March 21 – 24, 2024; \$100 Facebook/\$100 Instagram

## March 25, 2024



Miami Valley Regional Planning Commission

March 25 at 9:00 AM · 🌐

Today from 5-6pm, MVRPC will host a public meeting at the Darke Rural Electric Facility located at 1120 Fort Jefferson Ave. in Greenville. This meeting is an opportunity for the public to review the 2050 Regional Transportation Plan which strives to improve the multimodal transportation system for all people and freight and economic development opportunities for the Region. Learn more at [rtpo.mvrpc.org](http://rtpo.mvrpc.org)

## March 26, 2024



Miami Valley Regional Planning Commission

March 26 at 8:00 AM · 🌐

A virtual meeting will be held today from 12-1 pm via zoom platform regarding the Darke-Preble-Shelby counties 2050 Regional Transportation Plan. Visit [rtpo.mvrpc.org](http://rtpo.mvrpc.org) for the access link or call-in phone number.

## March 26, 2024



Miami Valley Regional Planning Commission

March 26 at 1:30 PM · 🌐

At the Shelby County Agriculture Center today from 5-6pm, MVRPC will host a public meeting to review the 2050 Regional Transportation Plan for Darke-Preble-Shelby counties. Learn more at [rtpo.mvrpc.org](http://rtpo.mvrpc.org).



👍 Like

💬 Comment



Miami Valley Regional Planning Commission

March 27 at 10:00 AM · 🌐

The final in-person public meeting to review the 2050 Regional Transportation Plan for Darke-Preble-Shelby counties will be held today from 5-6pm at the Preble County Fairgrounds - Expansion Building. Learn more at [rtpo.mvrpc.org](http://rtpo.mvrpc.org)

## April 10, 2024



Miami Valley Regional Planning Commission

1d · 🌐

Today is the final day to provide comments on the DRAFT Darke-Preble-Shelby counties 2050 Regional Transportation Plan Meetings. The full draft to review at [rtpo.mvrpc.org](http://rtpo.mvrpc.org) and comment form.



👍 Like

💬 Comment

## April 3, 2024



Miami Valley Regional Planning Commission

5d · 🌐

April 10 is the final day to review and leave comments regarding the Darke-Preble-Shelby counties 2050 Regional Transportation Plan Meetings. Visit [rtpo.mvrpc.org](http://rtpo.mvrpc.org) to review the draft plan and leave comments. The Plan strives to improve the multimodal transportation system for all people and freight and economic development opportunities for the Region.

# LinkedIn

## March 11, 2024

 Miami Valley Regional Planning Commission 1,012 followers 1d

MVRPC will hold public participation meetings in each county and virtually for the Darke-Preble-Shelby counties 2050 Regional Transportation Plan Meetings on March 25, 26, and 27. The Plan strives to improve the multimodal transportation system for all people and freight and economic development opportunities for the Region. Learn more at [rtpo.mvrpc.org](https://rtpo.mvrpc.org) or call 937.223.6323.



Like Comment Share


## March 25, 2024

 Miami Valley Regional Planning Commission 1,012 followers 1d

Today from 5-6pm, MVRPC will host a public meeting at the Darke Rural Electric Facility located at 1120 Fort Jefferson Ave. in Greenville. This meeting is an opportunity for the public to review the 2050 Regional Transportation Plan which strives to improve the multimodal transportation system for all people and freight and economic development opportunities for the Region. Learn more at [rtpo.mvrpc.org](https://rtpo.mvrpc.org).

Like Comment Share

## March 26, 2024

 Miami Valley Regional Planning Commission 1,012 followers 3h

A virtual meeting will be held today from 12-1pm via zoom platform regarding the Darke-Preble-Shelby counties 2050 Regional Transportation Plan. Visit [rtpo.mvrpc.org](https://rtpo.mvrpc.org) for the access link or call-in phone number.

Like Comment Share

## March 26, 2024

 Miami Valley Regional Planning Commission 1,021 followers 1w

At the Shelby County Agriculture Center today from 5-6pm, MVRPC will host a public meeting to review the 2050 Regional Transportation Plan for Darke-Preble-Shelby counties. Learn more at [rtpo.mvrpc.org](https://rtpo.mvrpc.org).

Like Comment Share

## March 27, 2024

 Miami Valley Regional Planning Commission 1,021 followers 1w

The final in-person public meeting to review the 2050 Regional Transportation Plan for Darke-Preble-Shelby counties will be held today from 5-6pm at the Preble County Fairgrounds - Expansion Building. Learn more at [rtpo.mvrpc.org](https://rtpo.mvrpc.org)

Like Comment Share

## April 3, 2024

 Miami Valley Regional Planning Commission 1,030 followers 5d

April 10 is the final day to review and leave comments regarding the Darke-Preble-Shelby counties 2050 Regional Transportation Plan Meetings. Visit [rtpo.mvrpc.org](https://rtpo.mvrpc.org) to review the draft plan and leave comments. The Plan strives to improve the multimodal transportation system for all people and freight and economic development opportunities for the Region.

1

Like Comment Share

## April 10, 2024

 Miami Valley Regional Planning Commission 1,029 followers 1d · Edited

Today is the final day to provide comments on the DRAFT Darke-Preble-Shelby counties 2050 Regional Transportation Plan Meetings. The full draft to review at [rtpo.mvrpc.org](https://rtpo.mvrpc.org) and comment form.

Like Comment Share



# Twitter (X)

## March 11, 2024

← Post

 **Miami Valley RPC** @mvrpc


MVRPC will hold public participation meetings for the Darke-Preble-Shelby counties 2050 Regional Transportation Plan Meetings in each county and virtually on March 25, 26, and 27. Learn more at [mvrpc.org](https://mvrpc.org) call 937.223.6323.

6:10 PM · Mar 11, 2024 · 50 Views

🗨️ 🔄 ❤️ 📌 📤

## March 26, 2024

← Post

 **Miami Valley RPC** @mvrpc

A virtual meeting will be held today from 12-1 pm via zoom platform regarding the Darke-Preble-Shelby counties 2050 Regional Transportation Plan. Visit [rtpo.mvrpc.org](https://rtpo.mvrpc.org) for the access link or call-in phone number.

8:00 AM · Mar 26, 2024 · 13 Views

🗨️ 🔄 ❤️ 📌 📤

## March 27, 2024

← Post

 **Miami Valley RPC** @mvrpc

The final in-person public meeting to review the 2050 Regional Transportation Plan for Darke-Preble-Shelby counties will be held today from 5-6pm at the Preble County Fairgrounds - Expansion Building. Learn more at [rtpo.mvrpc.org](https://rtpo.mvrpc.org)

10:00 AM · Mar 27, 2024 · 38 Views

🗨️ 🔄 ❤️ 📌 📤

## March 25, 2024

← Post

 **Miami Valley RPC** @mvrpc

Today from 5-6pm, MVRPC will host a public meeting at the Darke Rural Electric Facility located at 1120 Fort Jefferson Ave. in Greenville to review the 2050 Regional Transportation Plan which strives to improve the multimodal transportation system - [rtpo.mvrpc.org](https://rtpo.mvrpc.org).

9:00 AM · Mar 25, 2024 · 40 Views

1 Like

🗨️ 🔄 ❤️ 📌 📤

## March 26, 2024

 **Miami Valley RPC** @mvrpc · Mar 26

At the Shelby County Agriculture Center today from 5-6pm, MVRPC will host a public meeting to review the 2050 Regional Transportation Plan for Darke-Preble-Shelby counties. Learn more at [rtpo.mvrpc.org](https://rtpo.mvrpc.org).

🗨️ 🔄 ❤️ 📊 45 📌 📤

## April 3, 2024

 **Miami Valley RPC** @mvrpc · Apr 3


April 10 is the final day to review and leave comments regarding the Darke-Preble-Shelby counties 2050 Regional Transportation Plan Meetings. Visit [rtpo.mvrpc.org](https://rtpo.mvrpc.org) to review the draft plan and leave comments.


🗨️ 🔄 ❤️ 1 📊 42 📌 📤

# Instagram

Boosted post March 21 – 24, 2024; \$100 Facebook/\$100 Instagram





## March 11, 2024

 miamivalleyrpc ...


 miamivalleyrpc MVRPC will hold public participation meetings for the Darke-Preble-Shelby counties 2050 Regional Transportation Plan Meetings in each county and virtually on March 25, 26, and 27. Learn more at [mvrpc.org](http://mvrpc.org) call 937.223.6323.

4w


[View insights](#) [Boost post](#)


   

1 like  
March 11

 Add a comment... [Post](#)





## March 25, 2024

 miamivalleyrpc ...


 miamivalleyrpc Today from 5-6pm, MVRPC will host a public meeting at the Darke Rural Electric Facility located at 1120 Fort Jefferson Ave. in Greenville. This meeting is an opportunity for the public to review the 2050 Regional Transportation Plan which strives to improve the multimodal transportation system for all people and freight and economic development opportunities for the Region. Learn more at [rtpo.mvrpc.org](http://rtpo.mvrpc.org)

2w


[View insights](#) [Boost post](#)


   

1 like  
March 25

 Add a comment... [Post](#)





## March 26, 2024

 miamivalleyrpc ...


 miamivalleyrpc At the Shelby County Agriculture Center today from 5-6pm, MVRPC will host a public meeting to review the 2050 Regional Transportation Plan for Darke-Preble-Shelby counties. Learn more at [rtpo.mvrpc.org](http://rtpo.mvrpc.org).

2w


[View insights](#) [Boost post](#)


   

Be the first to like this  
March 26

 Add a comment... [Post](#)


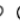


## March 27, 2024

 miamivalleyrpc ...


 miamivalleyrpc The final in-person public meeting to review the 2050 Regional Transportation Plan for Darke-Preble-Shelby counties will be held today from 5-6pm at the Preble County Fairgrounds - Expansion Building. Learn more at [rtpo.mvrpc.org](http://rtpo.mvrpc.org)

2w


[View insights](#) [Boost post](#)


   

1 like  
March 27

 Add a comment... [Post](#)





## April 10, 2024

 miamivalleyrpc ...


 miamivalleyrpc Today is the to provide comments on the DRAFT Darke-Preble-Shelby counties 2050 Regional Transportation Plan Meetings. The full draft to review at [rtpo.mvrpc.org](http://rtpo.mvrpc.org) and comment form.

21h

[View insights](#) [Boost post](#)

Be the first to like this  
21 hours ago

 Add a comment... [Post](#)

# **Outreach**

**Paid Promotional Materials**



WHIO – AM Radio Cox Media Group – News Talk

	Daypart	Daypart Code	Spots	Length	Unit Rate	Total Cost
<b>Radio Total</b>			<b>56</b>		<b>\$17.86</b>	<b>\$1,000.00</b>
<b>WHIO-AM</b>			<b>56</b>		<b>\$17.86</b>	<b>\$1,000.00</b>
Flight A - 1 wk (03/18)						
			56		\$17.86	\$1,000.00
<b>One Week Total</b>			<b>56</b>		<b>\$17.86</b>	<b>\$1,000.00</b>
	M-F 5A-6A		4	30	\$10.00	\$40.00
	M-F 6A-10A	AM	5	30	\$45.00	\$225.00
	M-F 10A-3P	MD	6	30	\$45.00	\$270.00
	M-F 5P-7P		7	30	\$45.00	\$315.00
	Sa-Su 10A-7P		6	30	\$25.00	\$150.00
	M-Su 5A-5A		28	30	\$0.00	\$0.00

WEDI – Preble County based – Classic Country

\$252

Net rate 14 dollars

36 total spots, 18 paid 18 free PSA's Total net budget 252 dollars

Monday through Friday schedule 3-18/3-22  
2 spots per daypart 6-10a, 10-3p, 3-7p 30 spots

3 spots per day 6a-6p Saturday, Sunday 3/23-3/24

WMMX – FM  
iheartMedia –  
Top 40 music  
\$999.60

WMMX-FM (AC - Hot AC)																																																																	
Station/Proposal	Spots	Rate	Length	ACH	CPM	Reach	Cost	Spots	Rate																																																								
STATION TOTALS / AVERAGE	30	\$79.90	0.8	0.9	\$499	10,800	2.4																																																										
03/18/24 - 03/24/24 - 1 week																																																																	
Total per week:	30	\$1,176.00	0.8	0.9	\$499	10,800	2.4																																																										
Mo-Fr 6a-10a	5	\$50.00	30	0.8	250	12,852	1.4																																																										
Mo-Fr 10a-3p	3	\$50.00	30	1.3	365	17,632	1.6																																																										
Mo-Fr 3p-7p	4	\$50.00	30	0.8	500	11,762	1.3																																																										
Mo-Fr 5p-7p	1	\$50.00	30	0.9	57	4,200	1.0																																																										
Mo-Su 12n-12a	15	\$0.00	30	0.0	50	23,234	1.5																																																										
<table border="1"> <thead> <tr> <th>Month</th> <th>Spots</th> <th>Rate</th> <th>Length</th> <th>ACH</th> <th>CPM</th> <th>Reach</th> <th>Cost</th> </tr> </thead> <tbody> <tr> <td>March</td> <td>30</td> <td>\$0.00</td> <td>0.0</td> <td>0.0</td> <td>\$0.00</td> <td>\$0.00</td> <td>\$0.00</td> </tr> <tr> <td>April</td> <td>0</td> <td>\$0.00</td> <td>0.0</td> <td>0.0</td> <td>\$0.00</td> <td>\$0.00</td> <td>\$0.00</td> </tr> <tr> <td>May</td> <td>0</td> <td>\$0.00</td> <td>0.0</td> <td>0.0</td> <td>\$0.00</td> <td>\$0.00</td> <td>\$0.00</td> </tr> <tr> <td>June</td> <td>0</td> <td>\$0.00</td> <td>0.0</td> <td>0.0</td> <td>\$0.00</td> <td>\$0.00</td> <td>\$0.00</td> </tr> <tr> <td>July</td> <td>0</td> <td>\$0.00</td> <td>0.0</td> <td>0.0</td> <td>\$0.00</td> <td>\$0.00</td> <td>\$0.00</td> </tr> <tr> <td>Aug</td> <td>0</td> <td>\$0.00</td> <td>0.0</td> <td>0.0</td> <td>\$0.00</td> <td>\$0.00</td> <td>\$0.00</td> </tr> </tbody> </table>										Month	Spots	Rate	Length	ACH	CPM	Reach	Cost	March	30	\$0.00	0.0	0.0	\$0.00	\$0.00	\$0.00	April	0	\$0.00	0.0	0.0	\$0.00	\$0.00	\$0.00	May	0	\$0.00	0.0	0.0	\$0.00	\$0.00	\$0.00	June	0	\$0.00	0.0	0.0	\$0.00	\$0.00	\$0.00	July	0	\$0.00	0.0	0.0	\$0.00	\$0.00	\$0.00	Aug	0	\$0.00	0.0	0.0	\$0.00	\$0.00	\$0.00
Month	Spots	Rate	Length	ACH	CPM	Reach	Cost																																																										
March	30	\$0.00	0.0	0.0	\$0.00	\$0.00	\$0.00																																																										
April	0	\$0.00	0.0	0.0	\$0.00	\$0.00	\$0.00																																																										
May	0	\$0.00	0.0	0.0	\$0.00	\$0.00	\$0.00																																																										
June	0	\$0.00	0.0	0.0	\$0.00	\$0.00	\$0.00																																																										
July	0	\$0.00	0.0	0.0	\$0.00	\$0.00	\$0.00																																																										
Aug	0	\$0.00	0.0	0.0	\$0.00	\$0.00	\$0.00																																																										
<table border="1"> <thead> <tr> <th>Month</th> <th>Spots</th> <th>Rate</th> <th>Length</th> <th>ACH</th> <th>CPM</th> <th>Reach</th> <th>Cost</th> </tr> </thead> <tbody> <tr> <td>March</td> <td>30</td> <td>\$1,176.00</td> <td>0.8</td> <td>0.9</td> <td>\$499.60</td> <td>105,400</td> <td>\$999.60</td> </tr> <tr> <td>April</td> <td>0</td> <td>\$0.00</td> <td>0.0</td> <td>0.0</td> <td>\$0.00</td> <td>\$0.00</td> <td>\$0.00</td> </tr> <tr> <td>May</td> <td>0</td> <td>\$0.00</td> <td>0.0</td> <td>0.0</td> <td>\$0.00</td> <td>\$0.00</td> <td>\$0.00</td> </tr> <tr> <td>June</td> <td>0</td> <td>\$0.00</td> <td>0.0</td> <td>0.0</td> <td>\$0.00</td> <td>\$0.00</td> <td>\$0.00</td> </tr> <tr> <td>July</td> <td>0</td> <td>\$0.00</td> <td>0.0</td> <td>0.0</td> <td>\$0.00</td> <td>\$0.00</td> <td>\$0.00</td> </tr> <tr> <td>Aug</td> <td>0</td> <td>\$0.00</td> <td>0.0</td> <td>0.0</td> <td>\$0.00</td> <td>\$0.00</td> <td>\$0.00</td> </tr> </tbody> </table>										Month	Spots	Rate	Length	ACH	CPM	Reach	Cost	March	30	\$1,176.00	0.8	0.9	\$499.60	105,400	\$999.60	April	0	\$0.00	0.0	0.0	\$0.00	\$0.00	\$0.00	May	0	\$0.00	0.0	0.0	\$0.00	\$0.00	\$0.00	June	0	\$0.00	0.0	0.0	\$0.00	\$0.00	\$0.00	July	0	\$0.00	0.0	0.0	\$0.00	\$0.00	\$0.00	Aug	0	\$0.00	0.0	0.0	\$0.00	\$0.00	\$0.00
Month	Spots	Rate	Length	ACH	CPM	Reach	Cost																																																										
March	30	\$1,176.00	0.8	0.9	\$499.60	105,400	\$999.60																																																										
April	0	\$0.00	0.0	0.0	\$0.00	\$0.00	\$0.00																																																										
May	0	\$0.00	0.0	0.0	\$0.00	\$0.00	\$0.00																																																										
June	0	\$0.00	0.0	0.0	\$0.00	\$0.00	\$0.00																																																										
July	0	\$0.00	0.0	0.0	\$0.00	\$0.00	\$0.00																																																										
Aug	0	\$0.00	0.0	0.0	\$0.00	\$0.00	\$0.00																																																										
<table border="1"> <thead> <tr> <th>Month</th> <th>Spots</th> <th>Rate</th> <th>Length</th> <th>ACH</th> <th>CPM</th> <th>Reach</th> <th>Cost</th> </tr> </thead> <tbody> <tr> <td>March</td> <td>30</td> <td>\$1,176.00</td> <td>0.8</td> <td>0.9</td> <td>\$499.60</td> <td>105,400</td> <td>\$999.60</td> </tr> <tr> <td>April</td> <td>0</td> <td>\$0.00</td> <td>0.0</td> <td>0.0</td> <td>\$0.00</td> <td>\$0.00</td> <td>\$0.00</td> </tr> <tr> <td>May</td> <td>0</td> <td>\$0.00</td> <td>0.0</td> <td>0.0</td> <td>\$0.00</td> <td>\$0.00</td> <td>\$0.00</td> </tr> <tr> <td>June</td> <td>0</td> <td>\$0.00</td> <td>0.0</td> <td>0.0</td> <td>\$0.00</td> <td>\$0.00</td> <td>\$0.00</td> </tr> <tr> <td>July</td> <td>0</td> <td>\$0.00</td> <td>0.0</td> <td>0.0</td> <td>\$0.00</td> <td>\$0.00</td> <td>\$0.00</td> </tr> <tr> <td>Aug</td> <td>0</td> <td>\$0.00</td> <td>0.0</td> <td>0.0</td> <td>\$0.00</td> <td>\$0.00</td> <td>\$0.00</td> </tr> </tbody> </table>										Month	Spots	Rate	Length	ACH	CPM	Reach	Cost	March	30	\$1,176.00	0.8	0.9	\$499.60	105,400	\$999.60	April	0	\$0.00	0.0	0.0	\$0.00	\$0.00	\$0.00	May	0	\$0.00	0.0	0.0	\$0.00	\$0.00	\$0.00	June	0	\$0.00	0.0	0.0	\$0.00	\$0.00	\$0.00	July	0	\$0.00	0.0	0.0	\$0.00	\$0.00	\$0.00	Aug	0	\$0.00	0.0	0.0	\$0.00	\$0.00	\$0.00
Month	Spots	Rate	Length	ACH	CPM	Reach	Cost																																																										
March	30	\$1,176.00	0.8	0.9	\$499.60	105,400	\$999.60																																																										
April	0	\$0.00	0.0	0.0	\$0.00	\$0.00	\$0.00																																																										
May	0	\$0.00	0.0	0.0	\$0.00	\$0.00	\$0.00																																																										
June	0	\$0.00	0.0	0.0	\$0.00	\$0.00	\$0.00																																																										
July	0	\$0.00	0.0	0.0	\$0.00	\$0.00	\$0.00																																																										
Aug	0	\$0.00	0.0	0.0	\$0.00	\$0.00	\$0.00																																																										

Alpha Media Digital - targeted audio streaming commercials to Darke, Preble and Shelby County

\$375 – 18750 Impressions with companion 300x250 banner ad.

WTGR – Darke County based - Country

**Morning Drive** (6:00am-9:00am) 4- 30 second spots per day (M-F)

**Lunch Hour** (12:00pm-1:00pm) 2- 30 second spot per day (M-F)

**Afternoon Drive** (4:00-6:00pm) 3- 30 second spots per day (M-F)

9 spots daily x 5 days= 45 spots per week-

**Added Value-** No Cost- 2- 30 second spots per day M-F 6a-8p

55 total – 30 second spots for \$250- Monday March 18- Friday March 22

**Total Proposal Cost- \$250**  
Net to Station