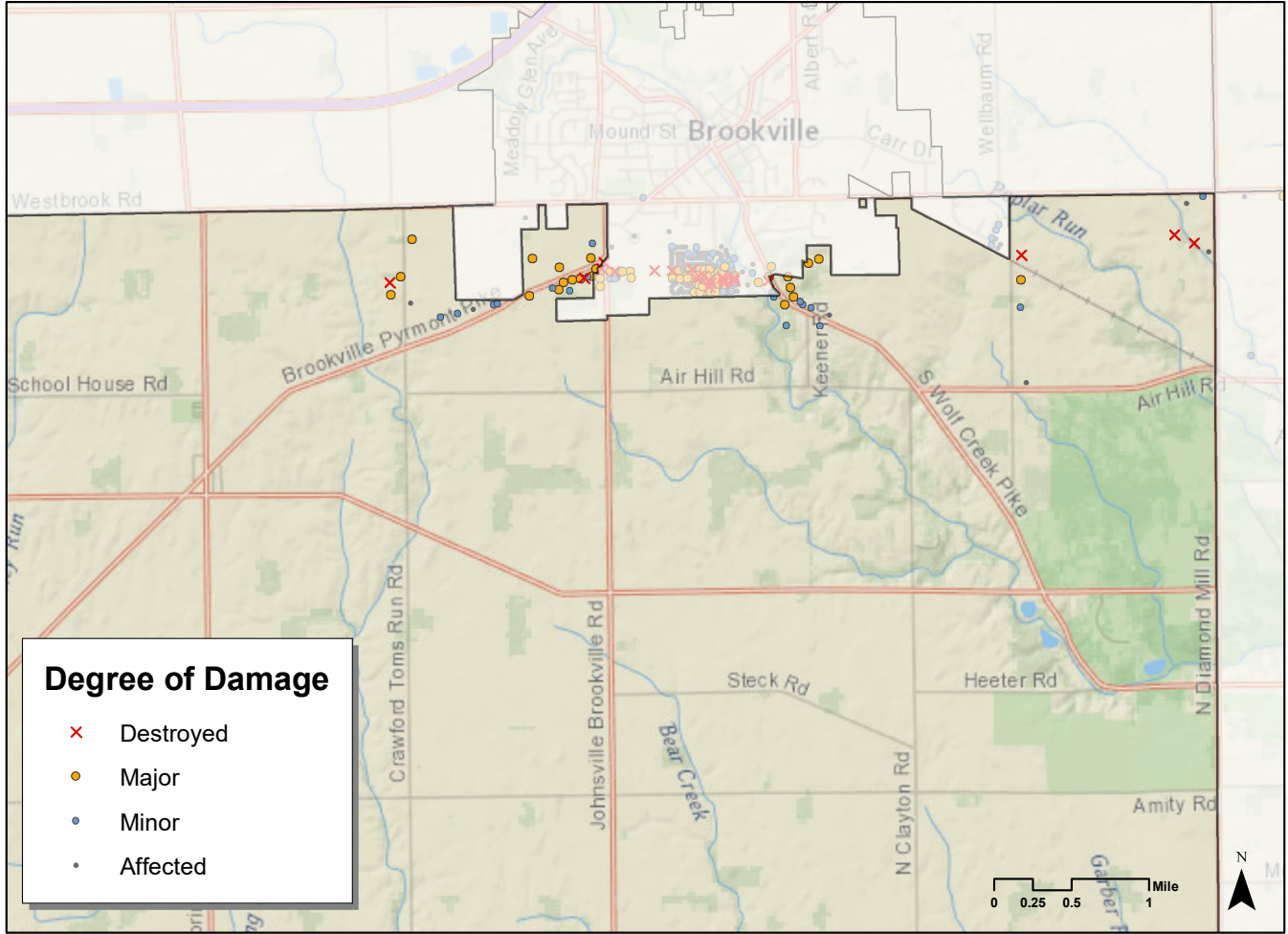
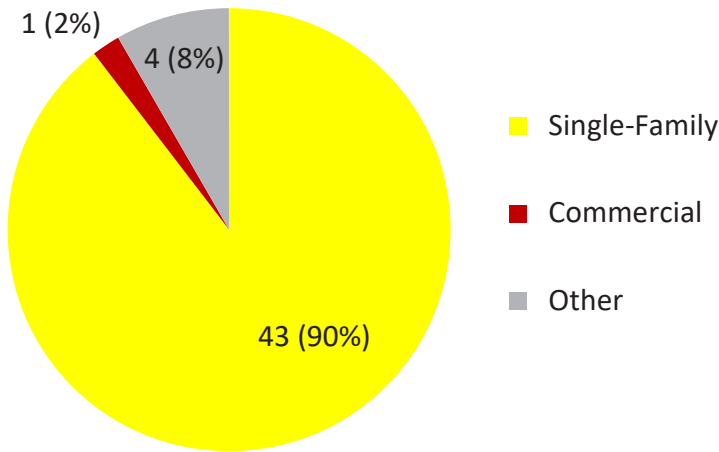


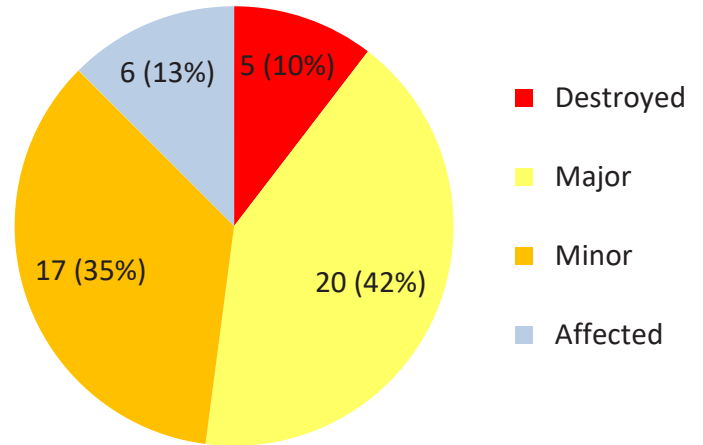
Perry Township Tornado Damage Assessment



Affected Land Uses



Types of Damage



	Destroyed	Major	Minor	Affected
Single Family	3 (60.0%)	18 (90.0%)	16 (94.1%)	6 (100.0%)
Multi Family	0 (0.0%)	0 (0.0%)	0 (0.0%)	0 (0.0%)
Commercial	0 (0.0%)	0 (0.0%)	1 (5.9%)	0 (0.0%)
Industrial	0 (0.0%)	0 (0.0%)	0 (0.0%)	0 (0.0%)
Other	2 (40.0%)	2 (10.0%)	0 (0.0%)	0 (0.0%)
Total	5 (100.0%)	20 (100.0%)	17 (100.0%)	6 (100.0%)

Date Produced: 11/12/2019
 Montgomery County Auditor
 Produced by MVRPC