



Scan with Camera  
for meeting information

## Board of Directors Meeting

**LOCATION:** Dayton Realtors, 1515 S. Main St., Dayton, OH 45409

**DATE/TIME:** Thursday, April 3, 2025 at 9:00 a.m.

### Agenda

<u>Item</u>	<u>Topic</u>	<u>Pg</u>	<u>Est. Time</u>	<u>Presenter</u>
I.	Call to Order, Introductions and Pledge of Allegiance		9:00	Sara Lommatzsch
* II.	Approval of March 6, 2025 – Meeting Minutes	1	9:05	Sara Lommatzsch
III.	Public Comment Period on Action Items		9:10	Sara Lommatzsch
IV.	<b>MPO (METROPOLITAN PLANNING ORGANIZATION) ACTION ITEMS</b>			
* A.	<u>Resolution 25-08: Recommended Adoption of Amendment #16 to MVRPC’s SFY 2024-2027 Transportation Improvement Program (TIP)</u>	5	9:15	Paul Arnold
V.	<b>INFORMATION ITEMS</b>			
* A.	Member Spotlight: Updates from the City of Sidney	15	9:20	Andrew Bowsher, City of Sidney
* B.	Access Ohio 2050	105	9:35	Randy Lane, ODOT
* C.	Going Places Implementation Tools Progress Update	119	9:50	Martin Kim
	D. <u>Wright Patterson Air Force Base Compatibility Use Plan</u>		10:05	Patrick Small, Matrix Design Group
* VI.	<b>EXECUTIVE DIRECTOR’S REPORT</b>	145	10:20	Brian Martin
VII.	<b>ADJOURNMENT</b>		10:30	Sara Lommatzsch

\* Attachment/ All Information is available on the [MVRPC Committee Center](#)

Interpreters for hearing-impaired individuals are available upon request; requests should be made at least one week ahead.

**\*\*Next Meeting\*\***

The next meeting is scheduled for Thursday, May 1, 2025 at 9:00 a.m.

**MIAMI VALLEY REGIONAL PLANNING COMMISSION  
BOARD OF DIRECTORS  
MINUTES**

**Dayton Realtors  
1515 S. Main St., Dayton, OH 45409**

**March 6, 2025  
9:00 AM**

**Members/Voting Alternates**

John Agenbroad, City of Springboro  
Sheila Back, Jefferson Township  
Pete Bales, City of Beavercreek  
Mike Barhorst, City of Sidney  
Doug Barry, Miami Township  
Steve Beachler, City of Miamisburg  
Scott Brown, ODOT District 8  
John Bruns, City of Union  
Steven Byington, City of Oakwood  
Nancy Byrge, City of Huber Heights  
Brenda Carroll, Village of Pleasant Hill  
Brooks Compton, City of Centerville  
Darryl Cordrey, Franklin Township  
Pat Corle, Dayton Realtors  
Rob Cron, City of Vandalia  
Jessica Dean, Beavercreek Township  
Judy Dodge, Montgomery County  
Aaron Flatter, Darke County  
Vanessa Glotfelter, Montgomery County TID  
Georgeann Godsey, Harrison Township  
James Gorman, City of Clayton  
Richard D. Gould, Greene County  
Bill Gourley, AES Ohio  
Joseph Graves, Troy Area Chamber of Com.  
Rap Hankins, Drive Electric Dayton  
Karen Hesser, Five Rivers MetroParks  
Walt Hibner, CenterPoint Energy  
Sarah Hippensteel Hall, Miami Conservancy Dis.  
Amber Holloway, City of West Carrollton  
Brian Housh, Village of Yellow Springs  
Matt Joseph, City of Dayton  
Dan Kirkpatrick, City of Fairborn  
Sara Lommatzsch, City of Riverside  
Kristen Marks, Centerville-Washington Park Dis.  
Ted Mercer, Miami County  
Scott Miller, Xenia Township

Marvin Moeller, Sugarcreek Township  
Robin I. Oda, City of Troy  
Yvette Page, City of Trotwood  
Matt Parrill, ODOT District 7  
Lisa Rindler, GDAHA  
Woody Stroud, Greene County Transit  
Bryan Suddith, City of Kettering  
William Urschel, City of Xenia  
Jim Vetter, City of Piqua  
Rachael Vonderhaar, Preble County

**Other Alternates/Guests**

Derrick Burgess, Jefferson Township  
Elmer Dudas, City of Springboro  
Tom Kretz, Beavercreek Township  
David Litteral, City of Beavercreek  
Sam Morton, Montgomery County TID  
Mitchell Pence, Darke County Park Dis.  
Patrick Titterington, City of Troy  
Jeff Wallace, Woolpert

**MVRPC Staff**

Grace Ankeney  
Paul Arnold  
Arnie Biondo, DelMar Fellow  
Chanda Davis  
Laura Dent  
Savannah Diamond  
Fabrice Juin  
Martin Kim  
Leslie King  
Mike Lucas  
Brian Martin  
Ana Ramirez  
Elijah Vernagus  
Liz Whitaker  
Megan Young

The Miami Valley Regional Planning Commission Board of Directors met on March 6, 2025 at 9:00 a.m. at Dayton Realtors, 1515 S. Main Street, Dayton, OH 45409. All members and news media were notified of the meeting pursuant to the Sunshine Law.

**I. INTRODUCTIONS**

Chairperson Lommatzsch called the meeting to order at 9:01 a.m. Self-introductions were made and a quorum was confirmed for the Miami Valley Regional Planning Commission's Board of Directors meeting. The Pledge of Allegiance was recited.

## II. APPROVAL OF FEBRUARY 6, 2025 MEETING MINUTES

Mr. Bruns made a motion to approve the minutes from the February 6, 2025 Board meeting. Mr. Moeller seconded the motion. The motion passed unanimously.

## III. PUBLIC COMMENT PERIOD ON ACTION ITEMS

None.

## IV. RPC (REGIONAL PLANNING COMMISSION) ACTION ITEMS

### A. Nomination Committee Report

Ms. Dodge presented the Nomination Report for the MVRPC Officers and the Institute for Livable and Equitable Steering Committee. She stated that this year's nomination committee included Judy Dodge, John Agenbroad, and Woody Stroud. The nomination committee met on February 20, 2025 to review the applicants and recommend the slate of officers and the Institute Steering Committee for 2025.

#### 1. Election of MVRPC Officers

Ms. Dodge announced the recommended slate of officers: Rachael Vonderhaar from Preble County for the position of 3rd Vice Chairperson, Richard Gould from Greene County for the position of 2nd Vice Chairperson, Robin I. Oda from the City of Troy, Miami County for the position of 1st Vice Chairperson, and Sara Lommatzsch, City of Riverside, Montgomery County for the position of Chairperson.

Ms. Byrge made a motion to elect the full slate of officer nominations. Mr. Joseph seconded the motion. The motion passed unanimously.

#### 2. Election of the Institute for Livable and Equitable Communities Steering Committee

Ms. Dodge provided the second half of the nomination committee report. She stated that the committee recommends the following slate of nominees for the 2025-2026 Institute Steering Committee members:

1. Nancy Byrge, City of Huber Heights
2. Judy Dodge, Montgomery County
3. Rap Hankins, Drive Electric Dayton
4. Karen Hesser, Five Rivers MetroParks
5. Brian Housh, Village of Yellow Springs
6. Matt Joseph, City of Dayton
7. Tom Kelley, United Way
8. Sara Lommatzsch, City of Riverside
9. Kristen Marks, Centerville Washington Park District
10. Nikol Miller, Miami Valley Urban League
11. Yvette Page, City of Trotwood
12. Mike Parks, The Dayton Foundation
13. Bob Scott, City of Kettering

Ms. Dodge then stated that the nomination committee also recommends Matt Joseph to serve as ISC Chairperson.

Mr. Gorman made a motion to elect the full slate of nominees for the 2025-2026 Institute Steering Committee including the appointment of the ISC Chairperson. Mr. Bales seconded the motion. The motion passed unanimously.

**V. RTPO (REGIONAL TRANSPORTATION PLANNING ORGANIZATION) ACTION ITEMS**

**A. Resolution 25-05: Approval of Recommended Project for DPS Regional Controlled RSTP Funds**

Ms. Ramirez presented the proposed Regional Surface Transportation Program (RSTP) project list for funding with MVRPC's regionally controlled funds. She explained that with Board approval, the project sponsor will be notified and then asked to meet with MVRPC staff and ODOT District Office staff to determine a detailed project scope and an anticipated project development schedule. She then referred to the CY2024 recommended RSTP Project table and provided information for the DCPD-Tecumseh Trail-Resurfacing Phase 1 project sponsored by Darke County Park District. Afterwards, Ms. Ramirez stated that staff and the Regional Transportation Planning Organization Steering Committee (RTPOSC) recommend approving the project submitted for DPS Regional Controlled RSTP Funds.

Mr. Barhorst made a motion to approve the recommended project for DPS Regional Controlled RSTP Funds. Ms. Vonderhaar seconded the motion. The motion passed unanimously.

**VI. MPO (METROPOLITAN PLANNING ORGANIZATION) ACTION ITEMS**

**A. Resolution 25-02: Recommended Adoption of Amendment #15 to MVRPC's SFY2024-SFY2027 Transportation Improvement Program**

Mr. Arnold referred to the 15<sup>th</sup> amendment to the SFY 2024-2027 TIP and the numerous project changes made by MVRPC and ODOT. He reviewed key project details for all local jurisdiction projects and tables by county. He paused for any questions about the statewide line-item project tables or any projects. Afterwards, Mr. Arnold noted staff and the Technical Advisory Committee recommend adopting Amendment #15 to the SFY 2024-SFY 2027 Transportation Improvement Program.

Ms. Godsey made a motion to adopt Amendment #15 to the SFY 2024-SFY 2027 Transportation Improvement Program. Mr. Bruns seconded the motion. The motion passed unanimously.

**B. Resolution 25-06: Approving the Recommended List of CY2024 STP, CMAQ, TA and CR Projects**

Mr. Arnold presented information regarding the recommended Surface Transportation Program (STP), Congestion Mitigation/Air Quality (CMAQ), Transportation Alternatives (TA), and Carbon Reduction (CR) projects for funding with MVRPC's regionally controlled funds. He shared the projects summary for all the CY2024 recommendations and also shared the projects unable to fund. Mr. Arnold then stated that upon Board approval, project sponsors will be notified and then asked to meet with MVRPC staff and ODOT District Offices staff to determine a detailed project scope and an anticipated project development schedule. Mr. Arnold then opened the floor for questions. Lastly, Mr. Arnold stated that staff and the Technical Advisory Committee recommend approving the list of CY2024 STP, CMAQ, TA and CR projects.

Mr. Bales made a motion to approve the recommended list of CY2024 STP, CMAQ, TA and CR Projects. Mr. Joseph seconded the motion. The motion passed unanimously.

**VII. INFORMATION ITEMS**

**A. Safe Streets for All (SS4A) Safety Action Plan Update**



Ms. Whitaker presented an update on the Safe Streets for All (SS4A) Safety Action Plan. She first introduced herself as the project manager and stated that MVRPC is under contract with LJB Engineering to develop the regional safety action plan. She then explained that the regional safety action plan will cover the MPO area and will include coordination for communities with existing federal SS4A grants. The plan aims to reduce and ultimately eliminate serious-injury and fatal crashes for all roadway users.

Ms. Whitaker then outlined the key components of a Safety Action Plan, including data collection, goals and strategies, community engagement, and performance metrics. She also explained the Safe Systems Approach and discussed the project's steps and schedule. She noted that a slight pause was placed on the schedule due to the changing administration, but they are happy to announce that the project has resumed.

Next, she provided an overview of the team's current activities, including data collection, planning for the SS4A Steering Committee kick-off meeting, and identifying stakeholders. She stated that upcoming activities will include an existing conditions analysis, stakeholder and public meeting planning, and a policy and process review.

Ms. Whitaker also shared information on the newly formed SS4A Steering Committee, explaining that this decision-making body, consisting of around 12 members, will provide oversight and meet monthly following the TAC.

She then opened the floor for questions and comments.

## **VIII. EXECUTIVE DIRECTOR'S REPORT**

### **A. Executive Director's Update**

Mr. Martin then reviewed the [March ED's Update](#):

- Welcoming Our 2025 MVRPC Board of Directors
- It's Your City, It's Your World
- MVRPC Safe Streets for All (SS4A) Comprehensive Safety Action Plan Development
- The 2025 Regional Livability and Age-Friendly Grants
- Grants and Funding Resources
- MVRPC Events and Upcoming Meetings

Lastly, Mr. Martin stated that after the meeting, members of the Board of Directors will caucus to select their Executive Committee representatives.

## **IX. ADJOURNMENT**

Chairperson Lommatzsch adjourned the meeting at 9:40 a.m.

---

**Brian O. Martin, AICP**  
Executive Director

---

**Robin I. Oda**  
First Vice-Chairperson

**Date:**



Regional Planning Commission

6 North Main Street, Suite 400  
Dayton, Ohio 45402

t: 937.223.6323  
f: 937.223.9750  
TTY/TDD: 800.750.0750  
www.mvrpc.org

## MEMORANDUM

**To:** Technical Advisory Committee, Board of Directors  
**From:** MVRPC Staff  
**Date:** March 11, 2025  
**Subject:** SFY2024-SFY2027 Transportation Improvement Program (TIP) Amendment #16

Over the last few months MVRPC and ODOT have made numerous modifications to the programming documents for various projects resulting in the need for an SFY2024-SFY2027 TIP amendment. The attached TIP Tables 4.1 and 4.3 reflect the updated information for each specific project. Modifications to Statewide Line Item projects are shown on Table 4.6 and are provided for information only. A TIP terminology explanation chart of key abbreviations used in the highway/bikeway tables precedes Table 4.1. A resolution adopting the proposed TIP amendment is attached for your review and consideration. The MVRPC staff recommends your approval.

### Attachments:

- (1) TIP Abbreviation Table
- (2) Amended MVRPC TIP tables: 4.1 and 4.3
- (3) Statewide Line Item Project table 4.6 (For information only)
- (4) Resolution Adopting Amendments to the SFY2024-2027 TIP

## EXPLANATION OF ABBREVIATIONS USED IN TABLES 4.1 – 4.8

### **Project I.D. #**

First Three Characters  
 000 = Unique Project Number  
 Decimal Character = Subtype (as described below)  
 .1 = New Construction  
 .2 = Reconstruction  
 .3 = Resurface  
 .4 = Safety Improvement  
 .5 = Bridge Replacement/Rehabilitation  
 .6 = Signal Improvement  
 .7 = Bikeway/Pedestrian Improvement  
 .8 = Other Improvements

### **PID #**

ODOT "Project Identification Number"

### **Air Quality Status**

Identifies projects which were included  
 in the LRTP air quality conformity analysis  
 Upper Row = Project is Exempt or was Analyzed  
 Lower Row = Build Year Scenario (2020, 2030 or 2040)

### **Phase of Work**

ENG -Environmental and Contract Plan Preparation  
 ROW -Right-of-Way Acquisition  
 CON -Construction  
 SPR -Federal State Planning and Research  
 DBT -Debt Service

### **LRTP Goal**

G1 -Address regional transp. needs through improved planning  
 G2-1 -Encourage a stronger multi-modal network in the Region  
 G2-2 -Maintain the regional transportation system  
 G2-3 -Upgrade the regional transportation system  
 G2-4 -Incorporate regional land use strategies  
 G3 -Enhance attractiveness for future economic development  
 G4 -Encourage pursuit of alternative fuels to reduce emissions

### **FUND CODES, DESCRIPTION AND TYPICAL FUNDING SPLIT**

#### **Federal Allocation of ODOT or County Engineer Association Controlled Funds**

	<u>Typical Fed./Local Share</u>
BR -Bridge Replacement and Rehabilitation	80/20
EAR -Federal Earmark, Specific Source Undetermined at this Time	Varies
f-5307 -Urbanized Area Formula Grant	80/20
f-5310 -Enhanced Mobility of Seniors and Individuals with Disabilities	80/20
f-5311 -Formula Grants for Rural Areas	80/20
f-5337 -State of Good Repair Program	80/20
f-5339 -Bus and Bus Facilities Formula Program	80/20
HSIP -Highway Safety Improvement Program	90/10
IM -Federal-Aid Interstate Maintenance (Resurfacing, Restoring, Rehabilitation)	90/10
NH -National Highway System	80/20
NHPP -National Highway Performance Program	80/20
OTH -Other	Varies
SCR -State Carbon Reduction	80/20
SPR -Federal State Planning and Research	80/20
SRTS -Safe Routes to School	100
STA -Surface Transportation Program (ODOT Transportation Alternatives Set-aside)	80/20
STD -Surface Transportation Program (ODOT Allocation)	80/20
TRAC -Transportation Review Advisory Council	Varies

#### **Federal Allocation of MVRPC Funds**

	<u>Fed./Local Share</u>
CMAQ -Congestion Mitigation and Air Quality	Varies
CR -Carbon Reduction	Varies
STP -Surface Transportation Program	Varies
TA -Surface Transportation Program (Transportation Alternatives Set-aside)	Varies

#### **Other Funding Sources**

	<u>Other/Local Share</u>
CDBG -Community Development Block Grant	Varies
LOCAL -Local Funds	0/100
ODOD -Ohio Department of Development	Varies
OPWC -Issue 2/LTIP	80/20
STATE -ODOT State Funds	0/100
ELLIS -ODOT's Project Monitoring Database	
SLI -Statewide Line Item	
TELUS -MVRPC's Project Monitoring Database	

# Miami Valley Regional Planning Commission

**Table 4.1 RECOMMENDED SFY 2024 - SFY 2027 TRANSPORTATION IMPROVEMENT PROGRAM (HIGHWAY, BIKEWAY AND OTHER PROJECTS)**

**Greene County Projects**

<b>COUNTY, ROUTE, SECTION:</b> MOT/GRE - I-675/Wilmington Project		<b>ODOT PID #</b> 115160		<b>MVRPC #</b> 2452.8		<b>PROJECT SPONSOR:</b> Montgomery Co. TID	
<b>DESCRIPTION:</b> I-675 at Wilmington Pike-Evaluate and implement transportation improvements including local road improvements as well as improvements to the existing interchange.							
<b>COMMENTS :</b> Federal and Local PE funds delayed from SFY2025 to SFY2026 and unfunded TRAC PE delayed from SFY2026 to SFY2027 to reflect changes in Ellis. \$4,680,960 TRAC funding for PE, \$10,000,000 TRAC funding for R/W and \$51,371,000 TRAC funding for construction uncommitted at this time.							
<b>TOTAL COST (000):</b> \$72,726		<b>LET TYPE:</b> Traditional		<b>A.Q. :</b> Exempt		<b>LRTP GOAL:</b> G1	
PHASE	FUND	PRIOR	SFY2024	SFY2025	SFY2026	SFY2027	Future
ENG	STATE	\$615					
ENG	LOCAL	\$29					
ENG	NHPP	\$231					
ENG	STATE	\$375					
ENG	LOCAL		\$50				
ENG	NHPP		\$404				
ENG	STATE		\$50				
ENG	EAR				\$3,000		
ENG	LOCAL				\$750		
ENG	LOCAL					\$1,170	
ENG	TRAC					\$4,681	
ROW	TRAC					\$10,000	
CON	TRAC						\$51,371

# Miami Valley Regional Planning Commission

**Table 4.3 RECOMMENDED SFY 2024 - SFY 2027 TRANSPORTATION IMPROVEMENT PROGRAM (HIGHWAY, BIKEWAY AND OTHER PROJECTS)**

**Montgomery County Projects**

<b>COUNTY, ROUTE, SECTION:</b> MOT048D-00.09			<b>ODOT PID #</b> 111952		<b>MVRPC #</b> 2602.3		<b>PROJECT SPONSOR:</b> Dayton	
<b>DESCRIPTION:</b> SR 48D in Dayton from US 35 to Monument Avenue-Resurfacing and implementing a road diet by converting one travel lane to bike lanes.								
<b>COMMENTS :</b> Added State PE funds in SFY2025 to reflect changes in Ellis.								
<b>TOTAL COST (000):</b> \$492		<b>LET TYPE:</b> Local-let		<b>A.Q. :</b> Exempt		<b>LRTP GOAL:</b> G2-2		
PHASE	FUND	PRIOR	SFY2024	SFY2025	SFY2026	SFY2027	Future	
ENG	STATE	\$8						
CON	LOCAL			\$96				
CON	NHPP			\$385				
ENG	STATE			\$3				

<b>COUNTY, ROUTE, SECTION:</b> MOT835-02.57			<b>ODOT PID #</b> 116922		<b>MVRPC #</b> 2556.5		<b>PROJECT SPONSOR:</b> ODOT District-7	
<b>DESCRIPTION:</b> SR 835 approximately 1,100' west of the Montgomery/Greene County Line-Bridge replacement.								
<b>COMMENTS :</b> Increased Federal and State PE funds in SFY2025 to reflect changes in Ellis.								
<b>TOTAL COST (000):</b> \$9,320		<b>LET TYPE:</b> Traditional		<b>A.Q. :</b> Exempt		<b>LRTP GOAL:</b> G2-2		
PHASE	FUND	PRIOR	SFY2024	SFY2025	SFY2026	SFY2027	Future	
ENG	STATE	\$13						
ENG	STATE		\$93					
ENG	STD		\$372					
ENG	STATE			\$39				
ENG	STD			\$131				
CON	LOCAL						\$535	
CON	STATE						\$1,627	
CON	STD						\$6,510	

**Table 4.3 RECOMMENDED SFY 2024 - SFY 2027 TRANSPORTATION IMPROVEMENT PROGRAM (HIGHWAY, BIKEWAY AND OTHER PROJECTS)**

**Montgomery County Projects**

<b>COUNTY, ROUTE, SECTION:</b> MOT - Westbrook Resurfacing		<b>ODOT PID #</b> 119353		<b>MVRPC #</b> 2746.3		<b>PROJECT SPONSOR:</b> Brookville	
<b>DESCRIPTION:</b> Westbrook Road from Arlington Road to 300' west of Wolf Creek Street-Resurfacing including 1.5" mill and 1.5" overlay. New pavement markings will also be installed.							
<b>COMMENTS :</b> Decreased Federal and Local construction funds to reflect changes in Ellis.							
<b>TOTAL COST (000):</b> \$660		<b>LET TYPE:</b> Traditional		<b>A.Q. :</b> Exempt		<b>LRTP GOAL:</b> G2-2	
PHASE	FUND	PRIOR	SFY2024	SFY2025	SFY2026	SFY2027	Future
ENG	LOCAL		\$61				
CON	LOCAL				\$180		
CON	STP				\$420		

<b>COUNTY, ROUTE, SECTION:</b> MOT - Keowee Street Improvements		<b>ODOT PID #</b> 120094		<b>MVRPC #</b> 2765.4		<b>PROJECT SPONSOR:</b> Dayton	
<b>DESCRIPTION:</b> Keowee Street from Monument Avenue to Fifth Street-Construct roadway safety, bicycle and pedestrian improvements.							
<b>COMMENTS :</b> Increased Federal and Local PE funds, decreased Federal and Local R/W funds adn increased Local construction funds to reflect changes in Ellis.							
<b>TOTAL COST (000):</b> \$2,487		<b>LET TYPE:</b> Local-let		<b>A.Q. :</b> Exempt		<b>LRTP GOAL:</b> G2-3	
PHASE	FUND	PRIOR	SFY2024	SFY2025	SFY2026	SFY2027	Future
ENG	HSIP			\$74			
ROW	HSIP			\$79			
ENG	LOCAL			\$8			
ROW	LOCAL			\$9			
CON	HSIP				\$1,910		
CON	LOCAL				\$407		

<b>COUNTY, ROUTE, SECTION:</b> MOT - Shiloh Springs Road Resurfacing		<b>ODOT PID #</b> 121597		<b>MVRPC #</b> 2851.3		<b>PROJECT SPONSOR:</b> Trotwood	
<b>DESCRIPTION:</b> Shiloh Springs Road from Diamond Mill Road to Oakes Road-Pavement planing and asphalt concrete overlay. Also included are adjusting water valves to grade and new pavement markings.							
<b>COMMENTS :</b> Decreased Federal and Local construction funds to reflect changes in Ellis.							
<b>TOTAL COST (000):</b> \$486		<b>LET TYPE:</b> Traditional		<b>A.Q. :</b> Exempt		<b>LRTP GOAL:</b> G2-2	
PHASE	FUND	PRIOR	SFY2024	SFY2025	SFY2026	SFY2027	Future
ENG	LOCAL			\$57			
CON	LOCAL				\$86		
CON	STP				\$343		

**Table 4.3 RECOMMENDED SFY 2024 - SFY 2027 TRANSPORTATION IMPROVEMENT PROGRAM (HIGHWAY, BIKEWAY AND OTHER PROJECTS)**

**Montgomery County Projects**

<b>COUNTY, ROUTE, SECTION:</b> MOT165-08.71		<b>ODOT PID #</b> 122010		<b>MVRPC #</b> 2880.4		<b>PROJECT SPONSOR:</b> Montgomery Co. TID	
<b>DESCRIPTION:</b> Frederick Pike at Old Springfield Road-Safety improvements.							
<b>COMMENTS :</b> Increased PE funds in SFY2025 and decreased PE funds in SFY2026 to reflect changes in Ellis.							
<b>TOTAL COST (000):</b> \$3,725		<b>LET TYPE:</b> Local-let		<b>A.Q. :</b> Exempt		<b>LRTP GOAL:</b> G2-3	
PHASE	FUND	PRIOR	SFY2024	SFY2025	SFY2026	SFY2027	Future
ENG	HSIP			\$421			
ENG	HSIP				\$56		
ROW	HSIP					\$295	
CON	HSIP						\$2,760
CON	LOCAL						\$193

<b>COUNTY, ROUTE, SECTION:</b> MOT741-02.03		<b>ODOT PID #</b> 122021		<b>MVRPC #</b> 2872.7		<b>PROJECT SPONSOR:</b> Miami Twp. (Mot)	
<b>DESCRIPTION:</b> Along SR 741 from Ferndown Drive to Newmark Drive-Construct bicycle and pedestrian improvements.							
<b>COMMENTS :</b> Increased Federal and Local PE funds in SFY2025 and decreased Federal and Local PE funds in SFY2026 to reflect changes in Ellis.							
<b>TOTAL COST (000):</b> \$1,485		<b>LET TYPE:</b> Traditional		<b>A.Q. :</b> Exempt		<b>LRTP GOAL:</b> G2-1	
PHASE	FUND	PRIOR	SFY2024	SFY2025	SFY2026	SFY2027	Future
ENG	HSIP			\$162			
ENG	LOCAL			\$18			
ENG	HSIP				\$35		
ROW	HSIP				\$292		
ENG	LOCAL				\$4		
ROW	LOCAL				\$32		
CON	HSIP						\$847
CON	LOCAL						\$94

**Table 4.3 RECOMMENDED SFY 2024 - SFY 2027 TRANSPORTATION IMPROVEMENT PROGRAM (HIGHWAY, BIKEWAY AND OTHER PROJECTS)**

**Montgomery County Projects**

<b>COUNTY, ROUTE, SECTION:</b> MOT - Galewood Street Municipal Bridge		<b>ODOT PID #</b> 122768		<b>MVRPC #</b> 2891.5		<b>PROJECT SPONSOR:</b> Kettering	
<b>DESCRIPTION:</b> Galewood Street Bridge in Kettering-Replacement of superstructure.							
<b>COMMENTS :</b> Increased Federal and Local PE funds in SFY2025 and decreased and delayed Federal and Local PE funds in SFY2026 to SFY2027 to reflect changes in Ellis.							
<b>TOTAL COST (000):</b> \$1,317		<b>LET TYPE:</b> Local-let		<b>A.Q. :</b> Exempt		<b>LRTP GOAL:</b> G2-2	
PHASE	FUND	PRIOR	SFY2024	SFY2025	SFY2026	SFY2027	Future
ENG	BR			\$155			
ENG	LOCAL			\$39			
ENG	BR					\$29	
ENG	LOCAL					\$7	
CON	BR						\$939
CON	LOCAL						\$148

<b>COUNTY, ROUTE, SECTION:</b> MOT024-08.17		<b>ODOT PID #</b> 122785		<b>MVRPC #</b> 2893.4		<b>PROJECT SPONSOR:</b> Clayton	
<b>DESCRIPTION:</b> Westbrook Road at Hoke Road/Moss Creek Boulevard-Intersection safety improvements.							
<b>COMMENTS :</b> Added Local PE, R/W and construction funds to reflect changes in Ellis.							
<b>TOTAL COST (000):</b> \$3,581		<b>LET TYPE:</b> Local-let		<b>A.Q. :</b> Exempt		<b>LRTP GOAL:</b> G2-3	
PHASE	FUND	PRIOR	SFY2024	SFY2025	SFY2026	SFY2027	Future
ENG	HSIP				\$263		
ENG	LOCAL				\$29		
ENG	HSIP					\$77	
ROW	HSIP					\$149	
ENG	LOCAL					\$9	
ROW	LOCAL					\$17	
CON	HSIP						\$2,734
CON	LOCAL						\$304



# Miami Valley Regional Planning Commission

**Table 4.6 - DETAILED PROJECT INFORMATION FOR STATEWIDE LINE ITEMS LISTED IN TABLE 4.5**

<b>COUNTY, ROUTE, SECTION:</b> MIA571/718-VAR/07.62 - SLI-013			<b>ODOT PID #</b> 116494 <b>MVRPC #</b> 2545.8		<b>PROJECT SPONSOR:</b> ODOT District-7		
<b>DESCRIPTION:</b> Various culverts in Miami County-Replace culverts. SR 571 from just west of Peters Road to CR25A-Resurfacing.							
<b>COMMENTS :</b> Added State R/W funds in SFY2025 and decreased State construction funds to reflect changes in Ellis.							
<b>TOTAL COST (000):</b> \$1,854		<b>LET TYPE:</b> Traditional		<b>A.Q. :</b> Exempt		<b>LRTP GOAL:</b> G2-2	
PHASE	FUND	PRIOR	SFY2024	SFY2025	SFY2026	SFY2027	Future
ENG	STATE	\$2					
ENG	STATE		\$131				
ROW	STATE			\$32			
CON	STATE				\$1,688		

<b>COUNTY, ROUTE, SECTION:</b> MIA041-11.32 - SLI-012			<b>ODOT PID #</b> 118156 <b>MVRPC #</b> 2566.4		<b>PROJECT SPONSOR:</b> ODOT District-7		
<b>DESCRIPTION:</b> Interchange of I-75 and SR 41 in Troy-Safety and pedestrian improvements including ramp, signal, turn lane and sidewalk improvements.							
<b>COMMENTS :</b> Increased State R/W funds to reflect changes in Ellis.							
<b>TOTAL COST (000):</b> \$4,669		<b>LET TYPE:</b> Traditional		<b>A.Q. :</b> Exempt		<b>LRTP GOAL:</b> G2-3	
PHASE	FUND	PRIOR	SFY2024	SFY2025	SFY2026	SFY2027	Future
ENG	HSIP	\$277					
ENG	STATE	\$178					
ENG	HSIP		\$22				
ENG	STATE		\$10				
ROW	STATE			\$237			
CON	HSIP				\$1,697		
CON	LOCAL				\$97		
CON	STATE				\$2,151		

<b>COUNTY, ROUTE, SECTION:</b> D08 - R-W/R FY2025 - SLI-013			<b>ODOT PID #</b> 118966 <b>MVRPC #</b> 2686.4		<b>PROJECT SPONSOR:</b> ODOT District-8		
<b>DESCRIPTION:</b> Various locations in District 8-Installation of Reflective/Wet Reflective (R-W/R) long line pavement markings.							
<b>COMMENTS :</b> Increased State construction funds to reflect changes in Ellis.							
<b>TOTAL COST (000):</b> \$1,885		<b>LET TYPE:</b> Traditional		<b>A.Q. :</b> Exempt		<b>LRTP GOAL:</b> G2-3	
PHASE	FUND	PRIOR	SFY2024	SFY2025	SFY2026	SFY2027	Future
CON	STATE			\$1,851			
ENG	STATE			\$34			

**Table 4.6 - DETAILED PROJECT INFORMATION FOR STATEWIDE LINE ITEMS LISTED IN TABLE 4.5**

<b>COUNTY, ROUTE, SECTION:</b> MOT - SR 725 SUP Study - SLI-004		<b>ODOT PID #</b> 123446		<b>MVRPC #</b> 3008.7		<b>PROJECT SPONSOR:</b> Miamiisburg	
<b>DESCRIPTION:</b> SR 725 from Heincke Road to Byers Road-Feasibility study to construct a 10-foot shared use path along the southern edge of the roadway.							
<b>COMMENTS :</b> Increased Federal construction funds to reflect changes in Ellis.							
<b>TOTAL COST (000):</b> \$50		<b>LET TYPE:</b> Non-let		<b>A.Q. :</b> Exempt		<b>LRTP GOAL:</b> G1	
PHASE	FUND	PRIOR	SFY2024	SFY2025	SFY2026	SFY2027	Future
ENG	HSIP			\$10			
ENG	STA			\$40			



Regional Planning Commission

6 North Main Street, Suite 400  
Dayton, Ohio 45402

t: 937.223.6323  
f: 937.223.9750  
TTY/TDD: 800.750.0750  
www.mvrpc.org

**RESOLUTION 25-08  
AMENDING THE SFY2024-SFY2027 TRANSPORTATION IMPROVEMENT PROGRAM**

**WHEREAS**, the Miami Valley Regional Planning Commission is designated as the Metropolitan Planning Organization (MPO) by the Governor acting through the Ohio Department of Transportation in cooperation with locally elected officials for Greene, Miami and Montgomery Counties including the jurisdictions of Carlisle, Franklin, Springboro and Franklin Township in Warren County; and

**WHEREAS**, the MVRPC's Board of Directors serves as the policy and decision making body through which local governments guide the MPO's transportation planning process for the Dayton Metropolitan Area; and

**WHEREAS**, all Federally funded transit and highway improvements within Greene, Miami and Montgomery County must be included in the region's Transportation Improvement Program (TIP) prior to the expenditure of Federal funds; and

**WHEREAS**, the SFY2024-SFY2027 Transportation Improvement Program was adopted on May 4, 2023; and

**WHEREAS**, MVRPC and ODOT have made numerous modifications to the programming documents for various projects resulting in the need for a SFY2024-SFY2027 TIP amendment; and

**WHEREAS**, the proposed amendment is consistent with the Region's long-range transportation plan; and

**WHEREAS**, this TIP amendment is consistent with the regional air quality emission analysis of the SFY2024-SFY2027 TIP; and

**WHEREAS**, the MVRPC Public Participation Policy for Transportation Planning process allows for minor TIP amendments such as this to occur without separate public involvement meetings; and

**WHEREAS**, this amendment will result in a TIP that is in reasonable fiscal constraint

**NOW THEREFORE BE IT RESOLVED**, that the Board of Directors of the Miami Valley Regional Planning Commission hereby adopts **Amendment #16** to the SFY2024-SFY2027 Transportation Improvement Program as shown on the attached TIP Tables.

**BY ACTION OF THE** Miami Valley Regional Planning Commission's Board of Directors.

\_\_\_\_\_  
**Brian O. Martin, AICP**  
Executive Director

\_\_\_\_\_  
**Sara Lommatzsch, Chairperson**  
Board of Directors of the  
Miami Valley Regional Planning Commission

\_\_\_\_\_  
Date



# The City of Sidney

Reporting on our  
Progress and Milestones







# Introduction

---

Let's talk about local government.

"The City of Sidney is a global nucleus of entrepreneurial innovation, with a focus on family values and small-town vibrancy" – City Council, May 2022





# Message from the City Manager



**Andrew Bowsher**

**"Stay Foolish, Stay Hungry – Steve Jobs**

The City of Sidney is committed to pushing the limits of our government expertise, innovation, and our ability to bring the highest level of public service to our residents, businesses, and community leaders.

It is our shared hope that celebrating our past, embracing collective diversity, and supporting our city's vision; motivates us to create a dynamic future for the people and businesses who call Sidney home.



# Priorities

Outlined are the major projects underway, in an effort to meet the council and community goals.

## Housing



Housing growth and development. Both within the downtown core and in the outer peripheral areas.

## Downtown



Redevelopment opportunities of key structures and buildings within the downtown, and traditional neighborhood areas.

## Trails / Parks



Transit growth, with enhanced bike and pedestrian access and an environmental emphasis, with renewed parks and recreation facilities. – Parks Master Plan 2023 / Canal Feeder Trail expansion



# Priorities

---

## Enforcement



Target code enforcement. Be proactive rather than reactive. Focus energy on bad actors while cleaning up our neighborhoods, including our Vacant Property Registration and rental Registration programs and New Ranger positions.

---

## Development



Target infill, redevelopment, and greenfield projects at key nodal intersections and major corridors. To include Rt. 47, Vandemark, Fair Rd, and Russell.

---

## Financial



Continue to be fiscally conservative and be good stewards of the taxpayer's dollars.



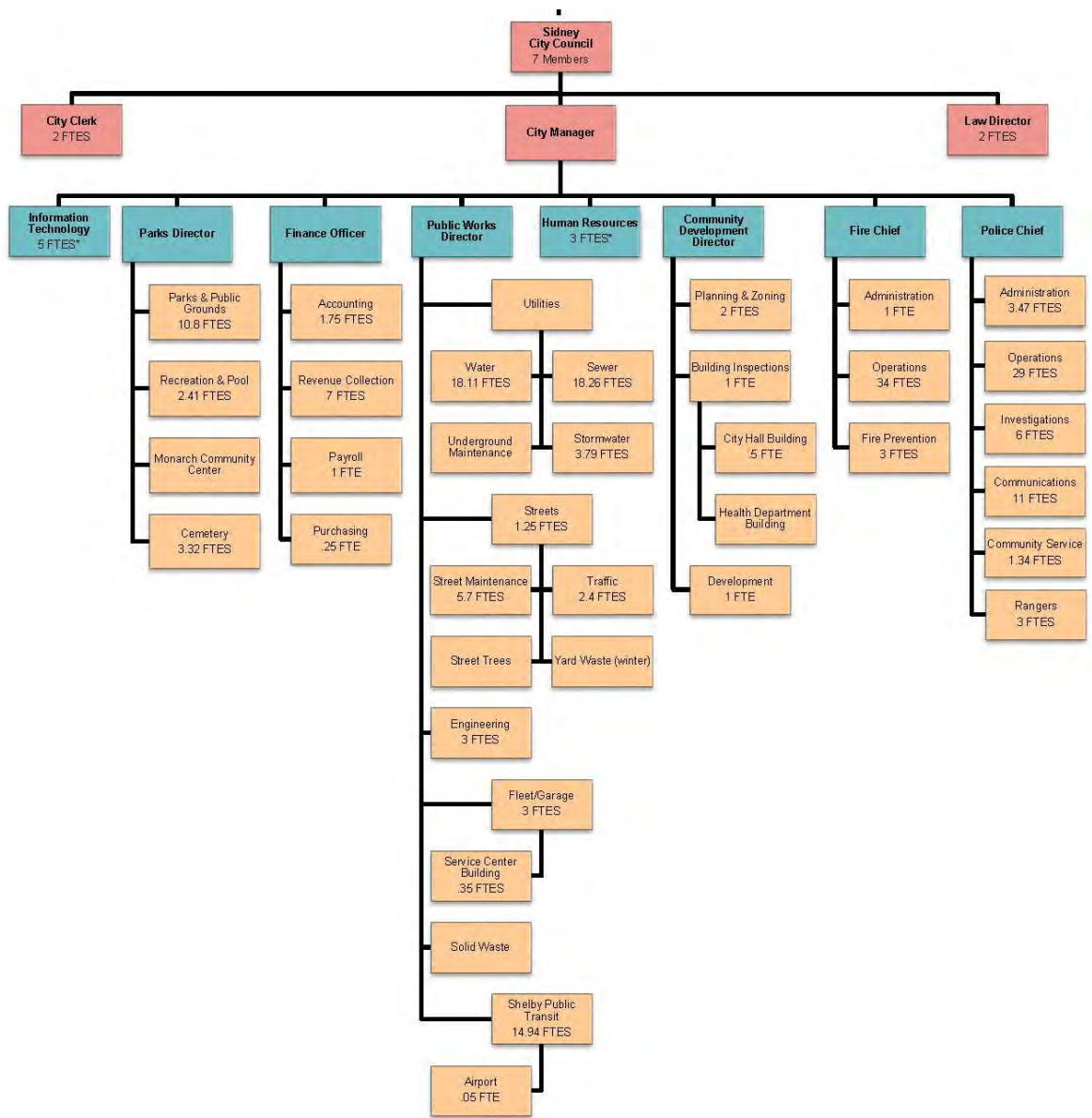


# Roles + Partnerships

Thriving ecosystems depend on cross-sector partnerships and collaboration. Our City is uniquely positioned to convene critical partners to assess gaps and opportunities within the local ecosystem.

The importance of place is often missing from the dialogue around these ecosystems. Downtown is well-positioned to bring this place-based perspective to the table and help ensure that entrepreneurship is leveraged to make our district unique.







# Revenue Sources

---



## **Local Taxes**

Intergovernmental

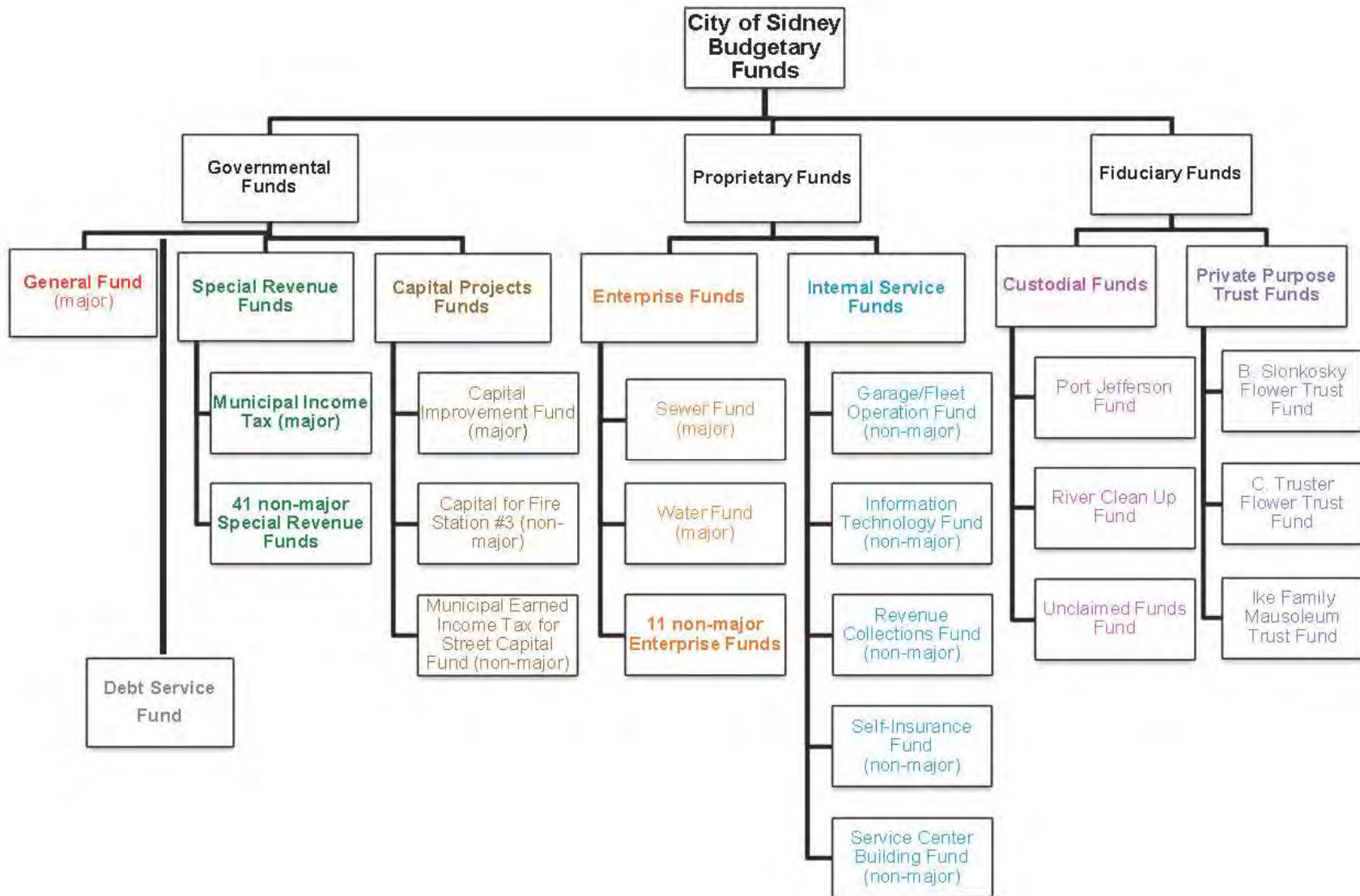
Assessments

## **Fees & Charges**

## **Grants**

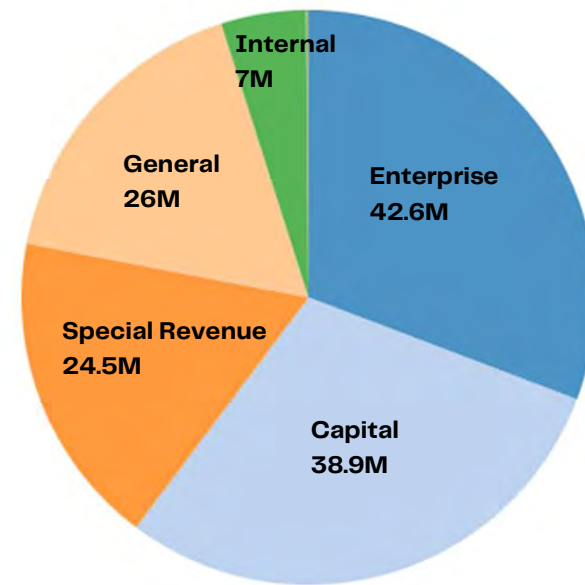
Interest

Interfund Transfers

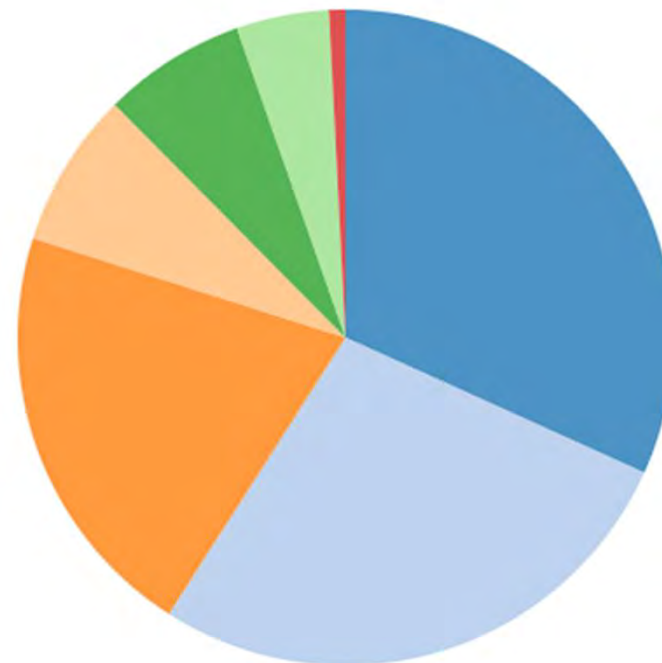


# The 2025 Operating Budget \$139.56 Million

- ENTERPRISE FUNDS
- CAPITAL IMPROVEMENT FUNDS
- SPECIAL REVENUE FUNDS
- GENERAL FUND
- INTERNAL SERVICE FUNDS
- FIDUCIARY FUNDS
- FUND



## The 2025 General Fund \$26 Million



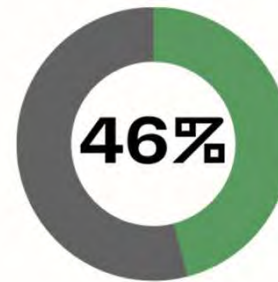


## By The Numbers



**12,600**

Total number of  
commuters coming  
to our City, daily.



Percentage of  
Manufacturing Jobs





## WELCOME TO OUR INDUSTRIAL CITY

---

The City of Sidney has a rich history steeped in manufacturing. Rightfully so, the City of Sidney has more manufacturing jobs (per capita) than any other City in the State!









- ✓ **Founded in 1820, the City of Sidney, named after Sir Philip Sidney, a well-known poet, and member of the British Parliament, was originally a 70-acre parcel of land located along the west side of the Great Miami River.**
- ✓ **Sidney has grown to 7,776 acres and is home to approximately ~21,000 individuals.**
- ✓ **Sidney is the county seat of Shelby County.**
- ✓ **Sidney is the largest and only city of the nine municipalities in Shelby County.**





## By The Numbers



**1200**

**Total number of  
new homes under  
development**



**50**

**Number of Years,  
since this kind of  
growth**



# Major Projects

## Burr Oak

Greenfield Development

- 250 single-family residences
- 70 Acres of Commercial Retail
- 22 Acres of Multi-family







# BURR OAK DEVELOPMENT

Sidney, Ohio

KEY	
<span style="border: 1px solid black; display: inline-block; width: 15px; height: 15px;"></span>	LEASED
<span style="background-color: yellow; border: 1px solid black; display: inline-block; width: 15px; height: 15px;"></span>	NEGOTIATING
<span style="background-color: lightblue; border: 1px solid black; display: inline-block; width: 15px; height: 15px;"></span>	AVAILABLE
<span style="background-color: brown; border: 1px solid black; display: inline-block; width: 15px; height: 15px;"></span>	NOT PART

UNIT	TENANT	SIZE (SQ. FT.)
A	Proposed Restaurant/Bank	1.00 AC
B1	Proposed Multi-Tenant Endcap	2,027
B2	Proposed Multi-Tenant Inline Space	1,770
B3	Proposed Multi-Tenant Drive-Thru	2,027
C	Proposed Restaurant/Auto	1.00 AC
D	McDonalds – Signed Lease (subject to Due Diligence)	1.25 AC
E	Proposed Auto/Retail	2.17 AC
F	Sheetz (Coming Soon)	3.03 AC
G	Proposed Hotel	2.44 AC
H	Proposed Restaurant	2.24 AC
I	Proposed Hotel	3.79 AC
J	Proposed Grocery/Retail	8.95 AC
K	Proposed Office	3.27 AC
L	Proposed Office	3.53 AC

## LEASING INFORMATION

### LARRY KLEIN

[larry@goodmanrealestate.com](mailto:larry@goodmanrealestate.com)

### ZACK SOGOLOFF

[zack@goodmanrealestate.com](mailto:zack@goodmanrealestate.com)

### TRISTAN PALMIERI

[tristan@goodmanrealestate.com](mailto:tristan@goodmanrealestate.com)

### CLEVELAND

THE OFFICES OF LEGACY VILLAGE  
25333 CEDAR ROAD, SUITE 305  
CLEVELAND, OH 44124

### COLUMBUS

389 E. LIVINGSTON AVENUE  
COLUMBUS, OHIO 43215

P 216.381.8200

F 216.381.8211

[WWW.GOODMANREALESTATE.COM](http://WWW.GOODMANREALESTATE.COM)



THE INFORMATION ABOVE HAS BEEN OBTAINED FROM SOURCES BELIEVED TO BE RELIABLE. GOODMAN REAL ESTATE SERVICES GROUP LLC AND ITS AGENTS, ASSOCIATES, AND EMPLOYEES MAKE NO GUARANTEE, WARRANTY OR REPRESENTATION ABOUT IT. ALL UNITS CONTAINED HEREIN ARE THE PROPERTY OF GOODMAN REAL ESTATE SERVICES GROUP LLC AND SHALL NOT BE DUPLICATED OR REPRODUCED WITHOUT EXPRESS WRITTEN CONSENT OF GOODMAN REAL ESTATE SERVICES GROUP LLC. YOU ACKNOWLEDGE THAT, AS REQUIRED BY THE STATE OF OHIO, YOU HAVE RECEIVED THE CONSUMER GUIDE TO AGENCY RELATIONSHIPS.



# Major Projects

## The Mills

Greenfield Development

- \$50M Investment
- 216 Residences
- Crawford Hoying - JBM
- Ground Breaking 1/31/24





# Major Projects



## Vision Development

### Greenfield Development

- \$75M Investment
- 330 Residences in 2 Phases
- Vision Development
- Ground Breaking Mid-2024





# Major Projects

## Fairfield Inn + Suites

Greenfield Development

- SEVA Development
- 118 Rooms + 70,000 sq ft.
- Ground Breaking Late-2025







# Major Projects

## Chase Bank

### Redevelopment

- J.P. Morgan Chase Bank
- 3,200 sq ft.
- Under Construction– Spring 2025
- Rt. 47 / Michigan





# Major Projects

## Folkerth Ave / Kroger Access Tesla Superchargers

- Redevelopment
- Public - Private Partnership
  - 8 Tesla Superchargers
  - Under Construction- Summer 2025



23





# Major Projects

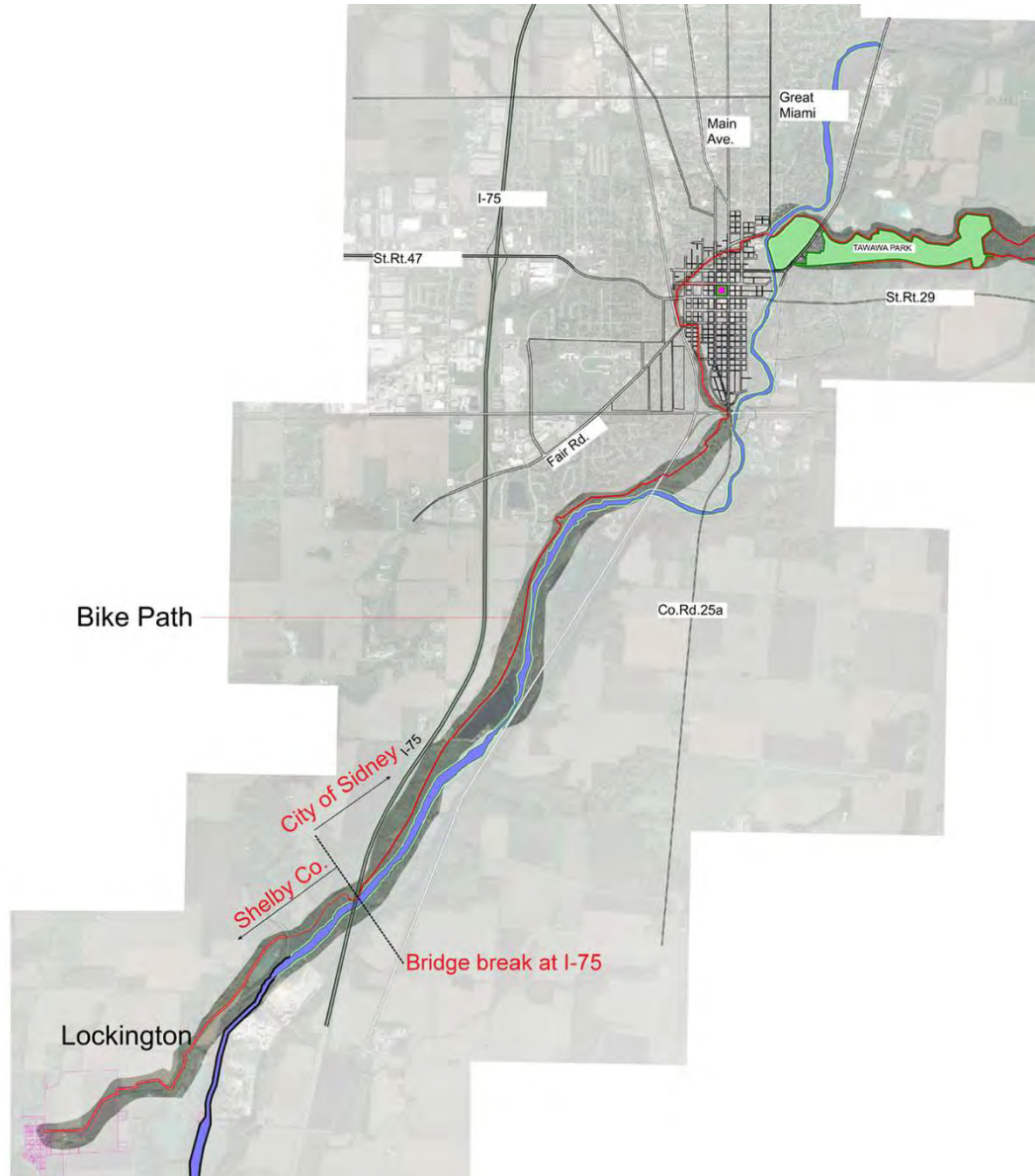
## Riverway Trail

### Continued Trail Expansion

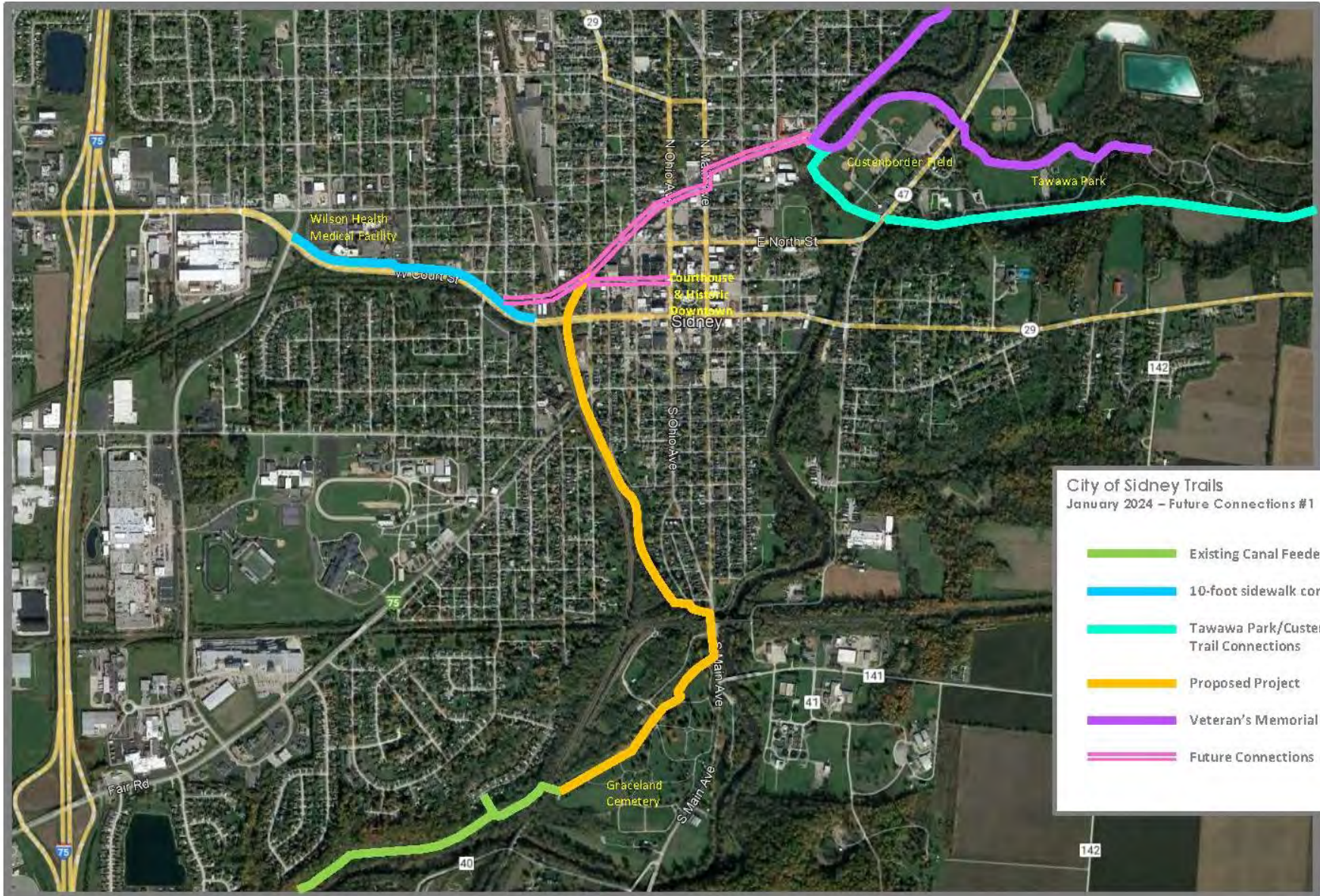
- Expansion South to Lockington/Piqua
- Expansion into Downtown and Tawawa Park











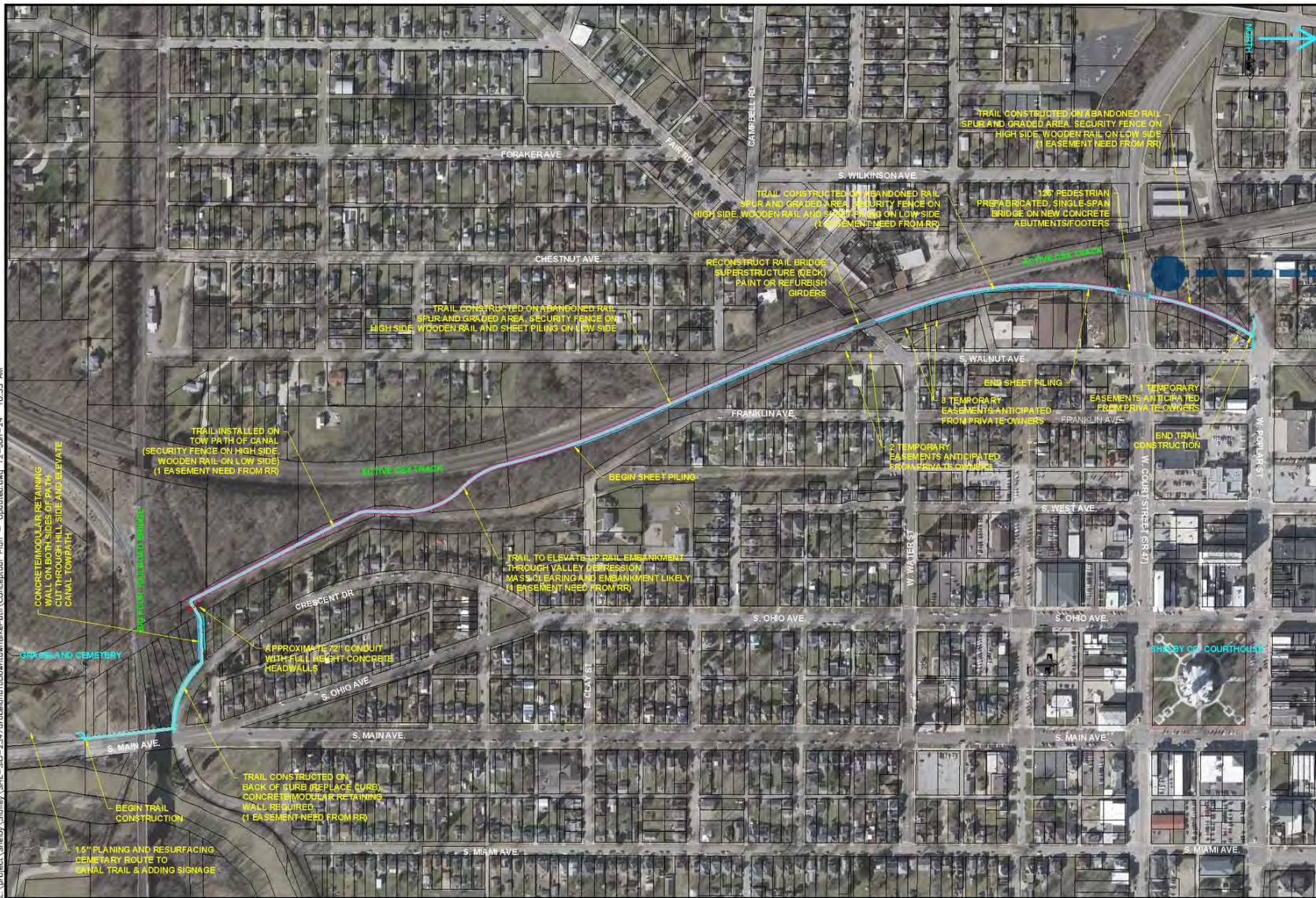
**City of Sidney Trails**  
January 2024 – Future Connections #1

↑  
N

- Existing Canal Feeder Trail/GMRT
- 10-foot sidewalk connection
- Tawawa Park/Custenborder Field Trail Connections
- Proposed Project
- Veteran's Memorial Walkway
- Future Connections



Z:\project\Shelby\Sidney\Site-SID-23472\excel\Download\BikePath\Conceptual Plan - Updated.dwg 12-Jan-24 10:13 AM





CHOICE ONE ENGINEERING  
 1000 N. STATE ST. SUITE 100  
 SIDNEY, OHIO 45376  
 WWW.CHOICEONEENGINEERING.COM

---

**GRACELAND TO DOWNTOWN MULTI-USE TRAIL  
 CITY OF SIDNEY, OHIO  
 CONCEPTUAL PLAN**

---

REVISIONS:

FILE NAME
DRAWN BY DMS
CHECKED BY
PROJECT No.
DATE 1/12/24
SHEET NUMBER 1 OF 1











### 1 Canal North

The Canal North subarea is situated in the northeastern part of the Canal Trail Corridor Focus Area, right next to the vibrant Downtown Sidney Entertainment District. The vision for this subarea is to create a seamless transition from the Downtown Core into the surrounding neighborhood by incorporating commercial and community-based mixed-use developments.

### 2 Central Canal

The Central Canal subarea serves as the civic hub of the Canal Trail Corridor Focus Area. It will include a future gateway and trailhead for the planned greenway. The vision for this subarea is to strengthen the local government's presence by optimizing underutilized parcels for new development, along with key areas for residential infill.

### 3 PK Lumber Site

The former PK Lumber site is located at the southernmost portion of the Canal Trail Corridor Focus Area. This former light industrial area, situated in a vibrant neighborhood on the outskirts of downtown, is envisioned to provide various residential building types, including attached single-family homes and multi-family units for both existing and future residents.



## Canal North

Commercial development on the doorstep of downtown

### Site 'A'

**SITE INFORMATION:**

**SIZE:** ≈2 acres

**CONDITION:** Aging commercial and light industrial uses

**ZONING:** CSD (Court Square District)

**DEVELOPMENT CONCEPT DATA:**

**CHARACTER:** 3-story Mixed-use

**RESIDENTIAL UNITS:** 38 units (Flats)

**COMMERCIAL FOOTPRINT:** 19,800sf

### Site 'B'

**SITE INFORMATION:**

**SIZE:** ≈.3 acres

**CONDITION:** Former auto-shop/gas station

**ZONING:** CSD (Court Square District)

**DEVELOPMENT CONCEPT DATA:**

**CHARACTER:** 2-story Commercial

**COMMERCIAL FOOTPRINT:** 8,400sf

### Site 'C'

**SITE INFORMATION:**

**SIZE:** ≈.8 acres

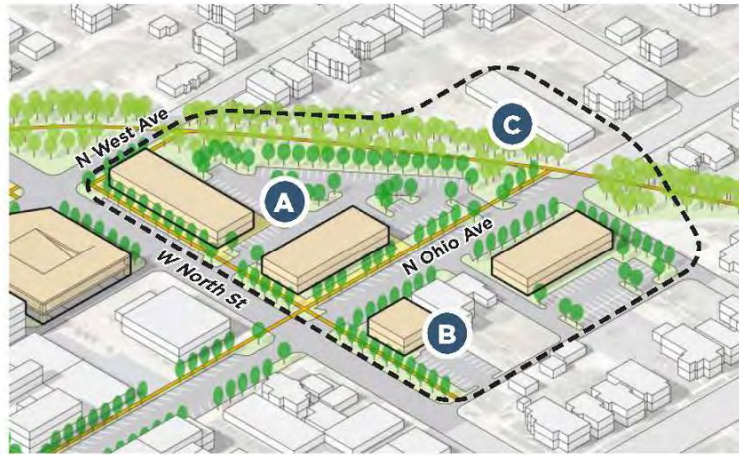
**CONDITION:** Aging commercial use

**ZONING:** CSD (Court Square District)

**DEVELOPMENT CONCEPT DATA:**

**CHARACTER:** 2 to 3-story Residential

**RESIDENTIAL UNITS:** 10 units (Townhomes)





## Central Canal

Government campus and recreation trailhead

### Site 'A' - Option 1

**SITE INFORMATION:**

*SIZE:* ≈ 4 acres

*CONDITION:* Parking lot

*ZONING:* CSD (Court Square District)

**DEVELOPMENT CONCEPT DATA:**

*CHARACTER:* 3-story Mixed-use

*RESIDENTIAL UNITS:* 24 units (Flats)

*COMMERCIAL FOOTPRINT:* 20,000sf

### Site 'B'

**SITE INFORMATION:**

*SIZE:* ≈ .65 acres

*CONDITION:* Vacant lot

*ZONING:* NC (Neighborhood Commercial)

**DEVELOPMENT CONCEPT DATA:**

*CHARACTER:* 2 to 3-story Residential

*RESIDENTIAL UNITS:* 10 units (Townhomes)

### Site 'A' - Option 2

**SITE INFORMATION:**

*SIZE:* ≈ 1.2 acres

*CONDITION:* Parking lot and small County office building

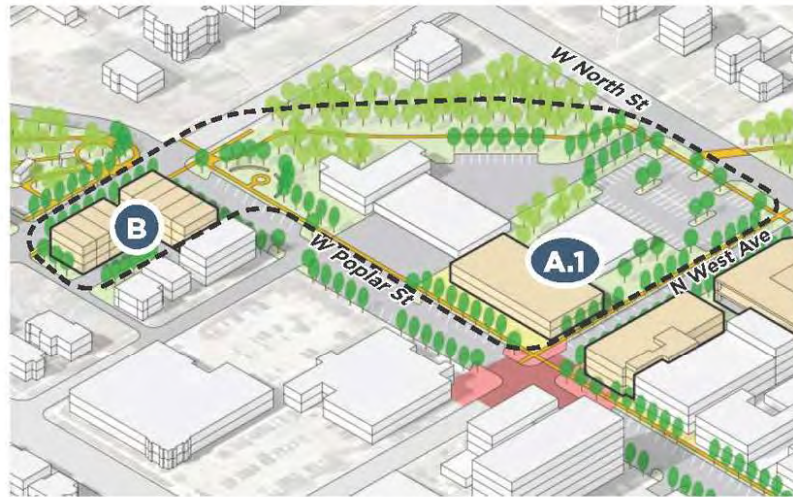
*ZONING:* CSD (Court Square District)

**DEVELOPMENT CONCEPT DATA:**

*CHARACTER:* 3 to 4-story Mixed-use

*RESIDENTIAL UNITS:* 48 units (Flats)

*COMMERCIAL FOOTPRINT:* 24,600sf





### PK Lumber Site

Diverse workforce housing  
close to downtown

#### Site 'A'

**SITE INFORMATION:**

**SIZE:** ≈2.8 acres

**CONDITION:** Former commercial and light industrial uses

**ZONING:** NC (Neighborhood Commercial)

**DEVELOPMENT CONCEPT DATA:**

**CHARACTER:** 3-story Mixed-use/Residential

**RESIDENTIAL UNITS:** 66 units (Flats)

**COMMERCIAL FOOTPRINT:** 9,600sf





# Major Projects

## Hemmelgarn Park

New Park  
Traditional Neighborhood  
Parkland Donated by the  
Hemmelgarn Family



Sidney Parks & Recreation Master Plan | Park Concept - St. Marys & Grove Park



Hillside Play



Playground



Overlook Pavilion



Pollinator Gardens

Interactive Rain Garden

06.01.2023



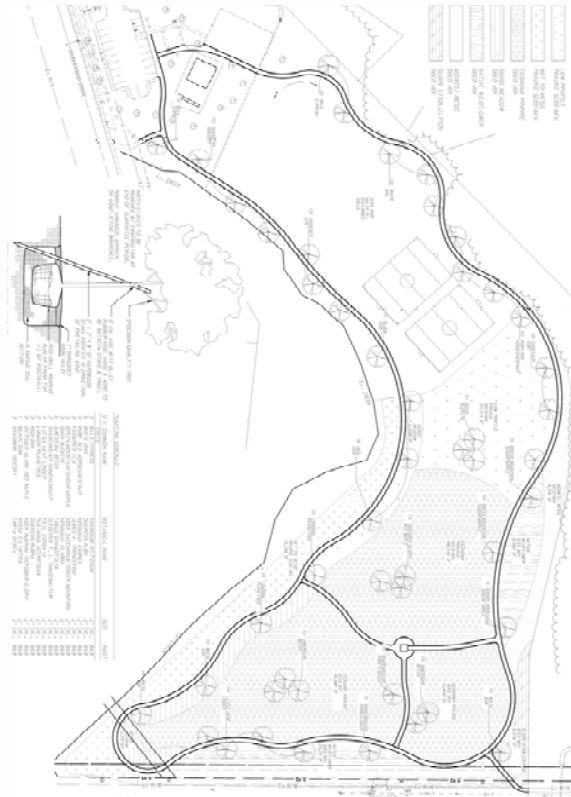




# Major Projects

## Robert O' New Park Conservation Area

- Conservation Project
- 0.7 Mile Trail (2024)
- New Shelter
- Forbes + Wildflower Butterfly Habitat
- Habitat
- Flora Learning Destination







# Major Projects



## DH Morrison Bridge

Restoration Project  
Built in 1874  
Tawawa Park

Sister to the Zenas King Bridge  
ODOT Historic Registry



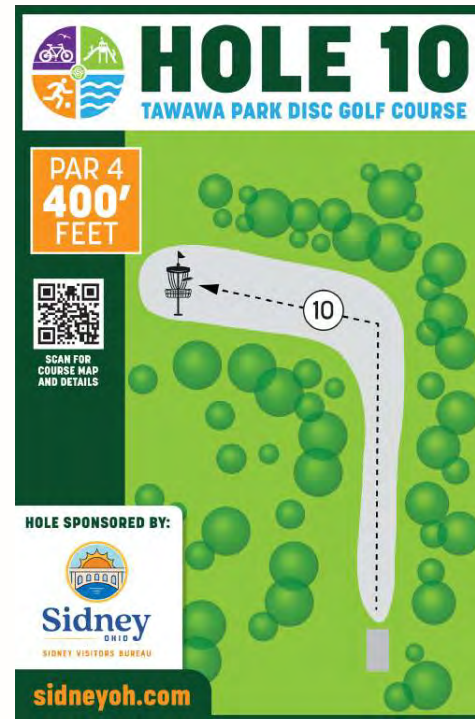


# New Recreation



## Pickleball

Existing Courts x4 - 2024  
New Courts x4 - 2025  
Overhead Lights



## Disc Golf

PDGA Registered Course  
18 Holes  
Tawawa Park





# New Program

## Sidney Rangers

First of It's Kind

3 Rangers

- Parks
- Auxiliary Law Enforcement
- Code Enforcement
- Creating Community Service





## Major Projects



### SEMCORP

#### Economic Development

- 1200 Jobs – Phase 1
- 1 Billion Initial Investment
- \$74 Million Payroll

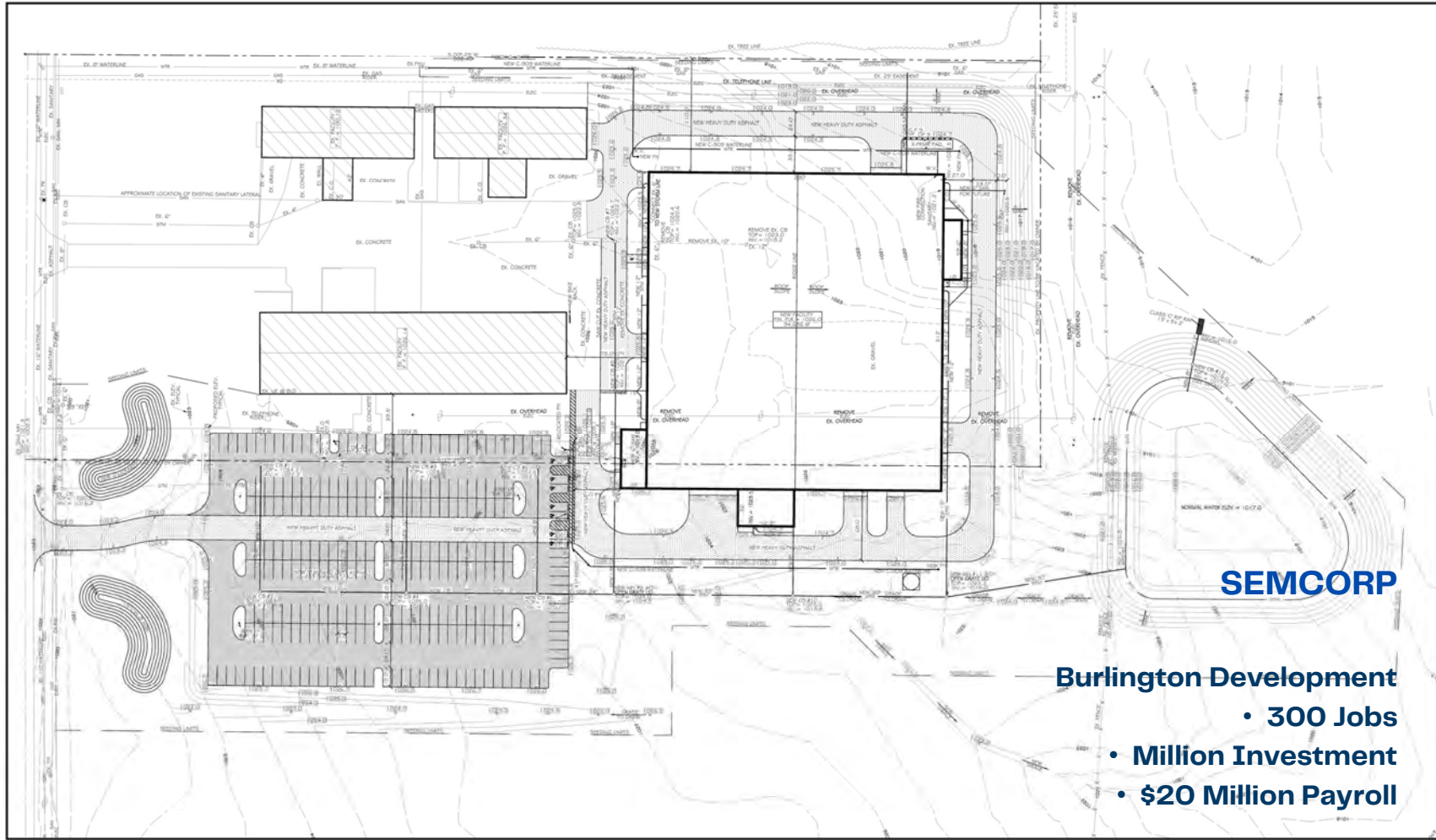












**SITE PLAN** SCALE: 1" = 40' - 0"  
 PROPOSED GRADES ARE FINISH ASPHALT OR FINISH GRADE ELEVATIONS



**LEGEND**

	SUB-FENCE
	FENCE
	WALL

**SEMCORP**  
**Burlington Development**  
 • 300 Jobs  
 • Million Investment  
 • \$20 Million Payroll

**Revisions**

#	Date	Description

Copyright © 2022  
 Ferguson Construction Company  
 The dissemination or duplication of this  
 architectural and engineering drawing is  
 prohibited without the prior written consent  
 of Ferguson Construction Company.

NOT FOR CONSTRUCTION

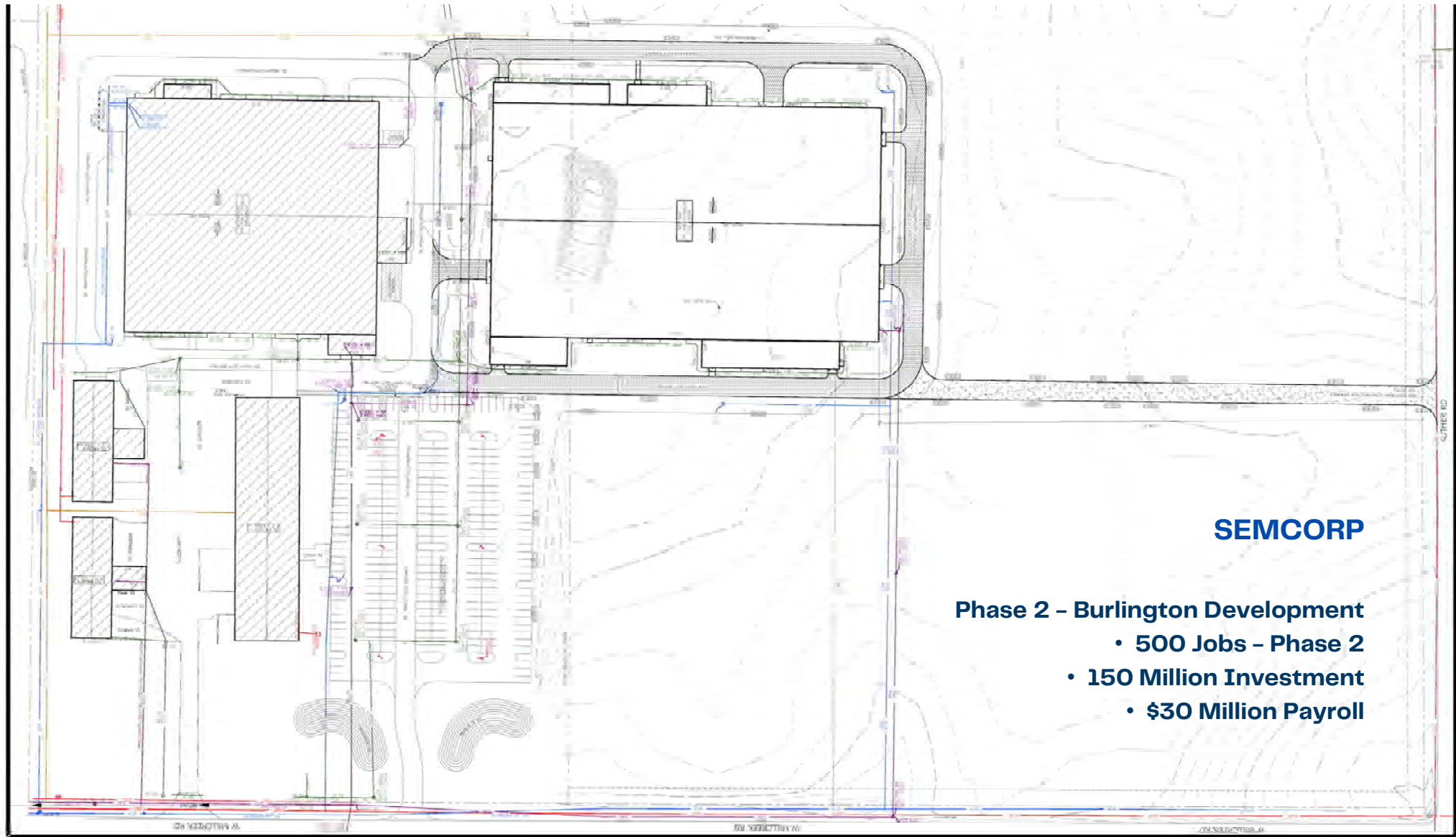
NEW BUILDING  
 FOR  
**SEMCORP**  
 SHELBY COUNTY



**Sidney, Ohio**  
 400 Canal Street  
 Sidney, OH 45365-0726  
 Phone: (937) 498-2381

**Dayton, Ohio**  
 825 S. Ludlow St.  
 Dayton, OH 45402  
 Phone: (937) 274-1173

**Columbus, Ohio**  
 3595 Johnny Appesseed Ct.  
 Columbus, OH 43231  
 Phone: (614) 878-6496



## SEMCORP

### Phase 2 - Burlington Development

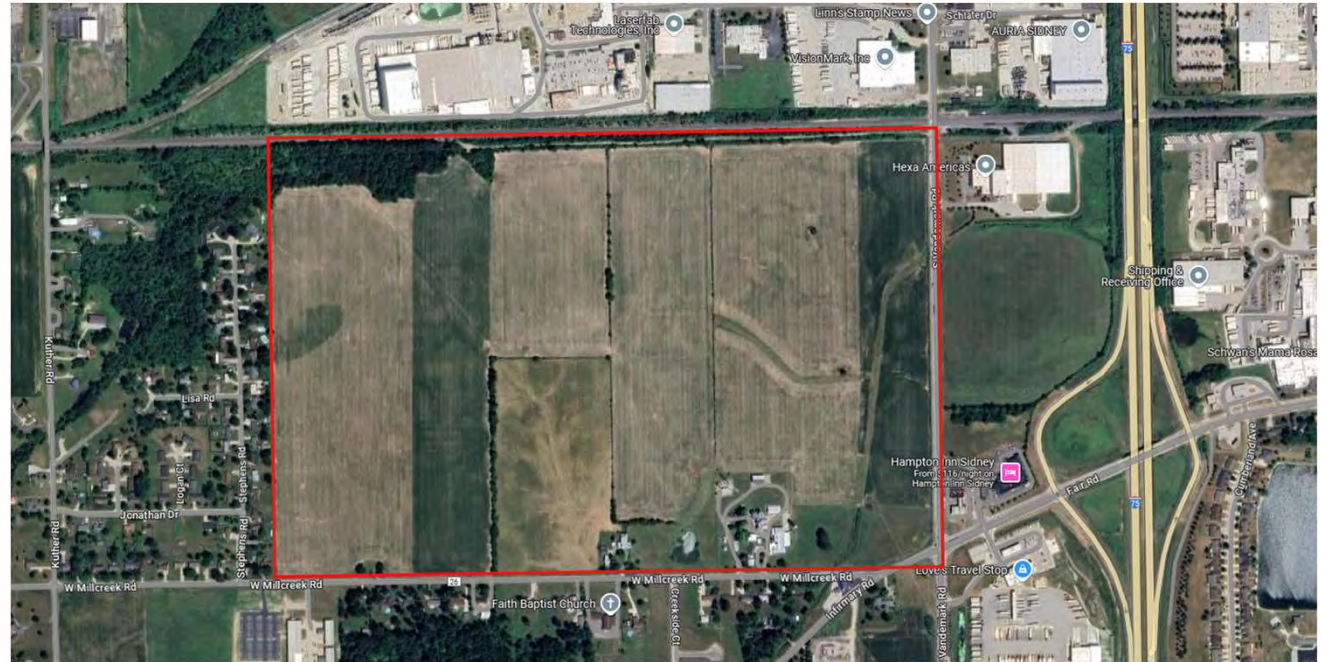
- 500 Jobs - Phase 2
- 150 Million Investment
- \$30 Million Payroll



# Major Projects

## Project Galaxy

Mega Site Status  
Absolute GAME CHANGER!!







# Major Projects



**Data Center**



# Major Projects

## City Hall

Reconstruction/Remodel and  
Addition of Existing Building  
~30k sq. ft.  
201 W. Poplar (Downtown)











# Major Projects

## Fire Station 2

Replacement of existing building

Campbell Road Relocation







EAST VIEW



NORTH VIEW







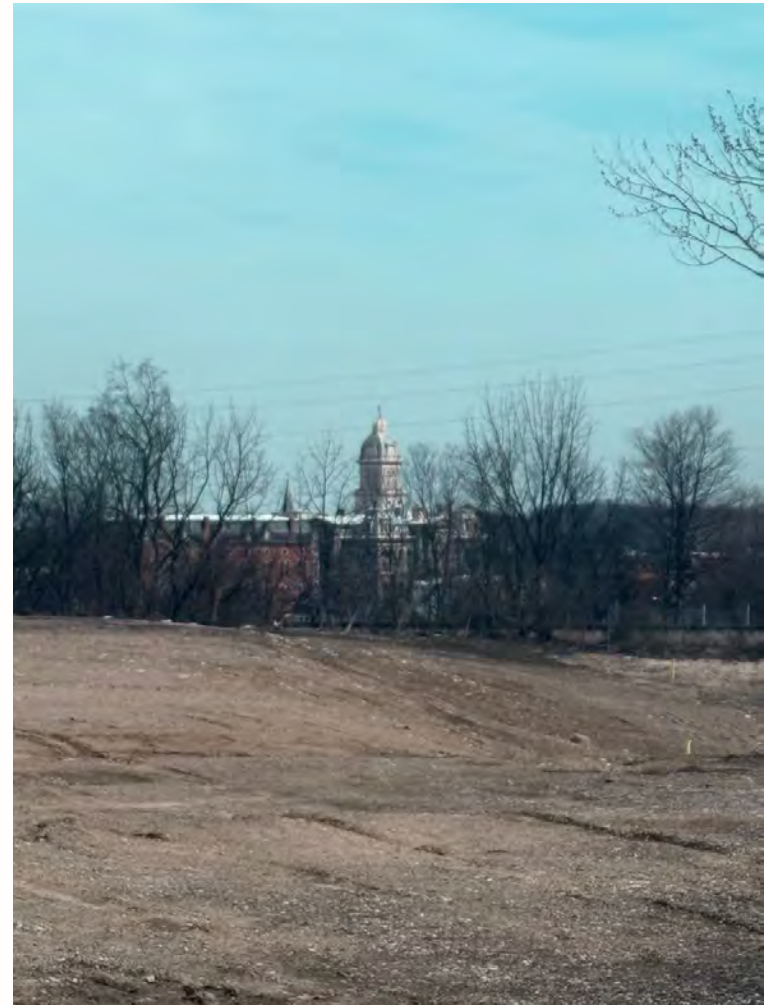
# Major Projects



## WagnerWare

Brownfield

- \$4.6M
- 2M Grant from ODOD
- City and County Funds
- County Land Bank







# Major Projects

## Sidney Airport

### Expansion and Growth

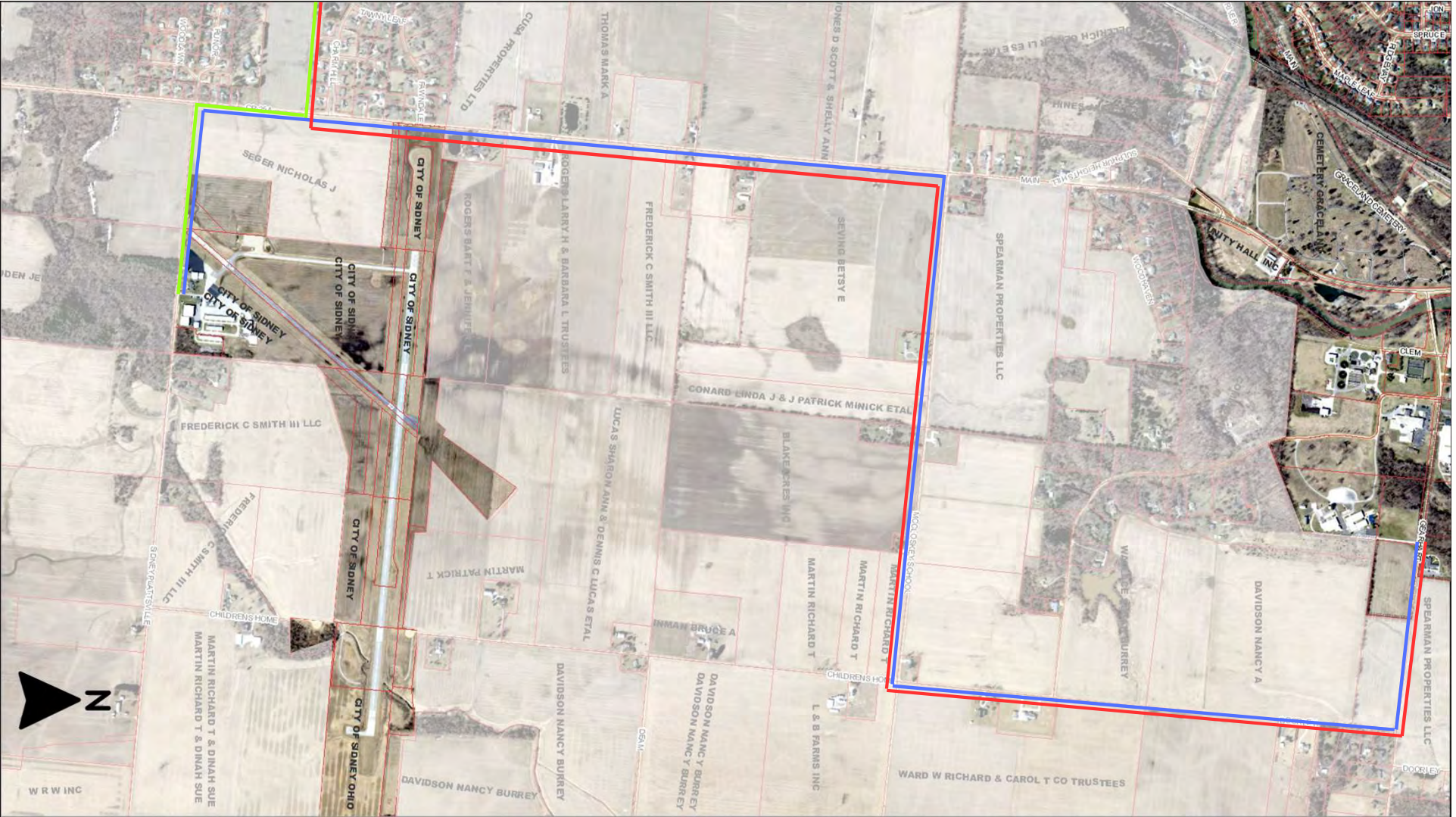
- \$4.2M Grant - Parallel Taxiway
- \$7.5M Water / Sewer Expansion
- Federal/State Funding
- Advanced Air Mobility













## **Advanced Air Mobility (AAM)**

**\$9B Industry**







# Major Projects

## Ohio Building

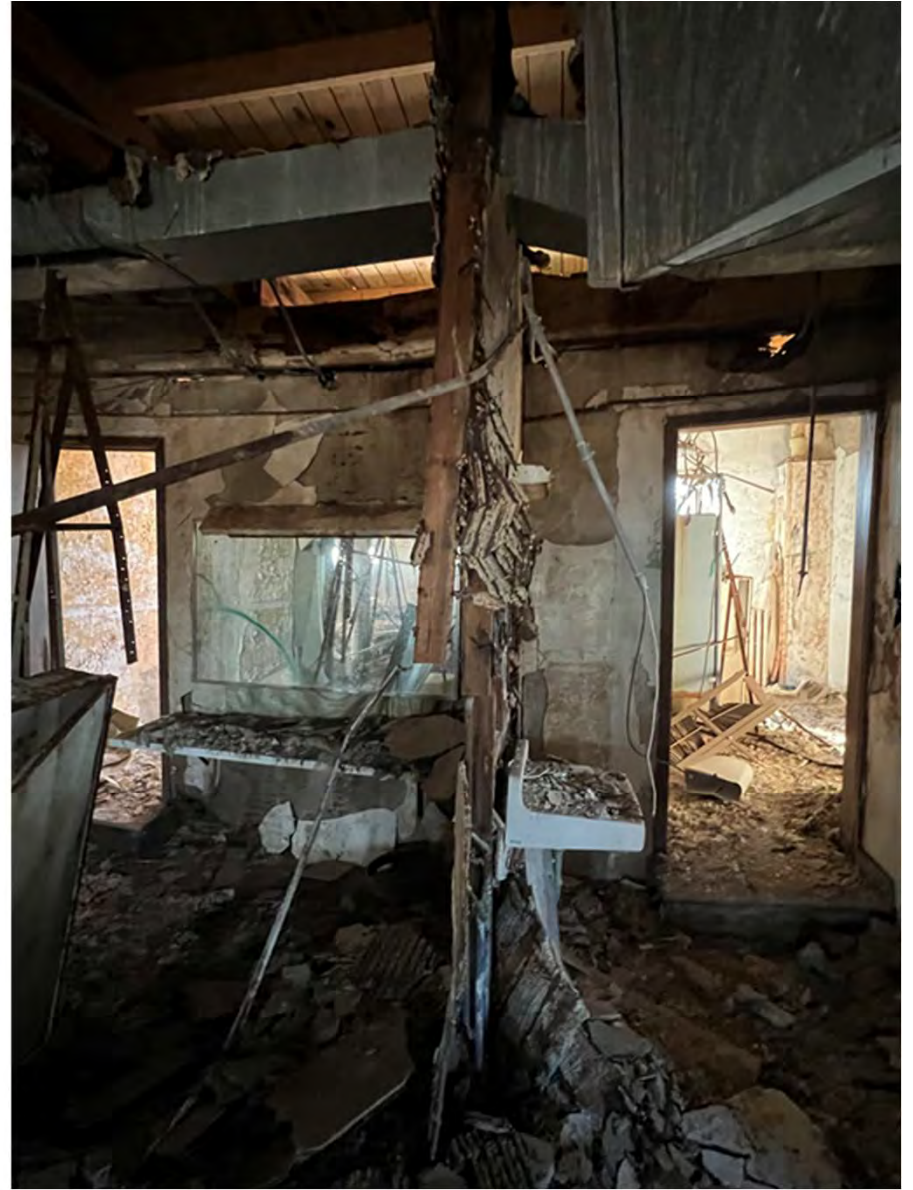
### Redevelopment

- 102-Year-Old Building (1923)
- 5 Story - Mixed-Use
- 50 Luxury Apartments
- 2 Commercial Tenants
- Woodard Development
- 12 million Investment

















**moda**  
DESIGN







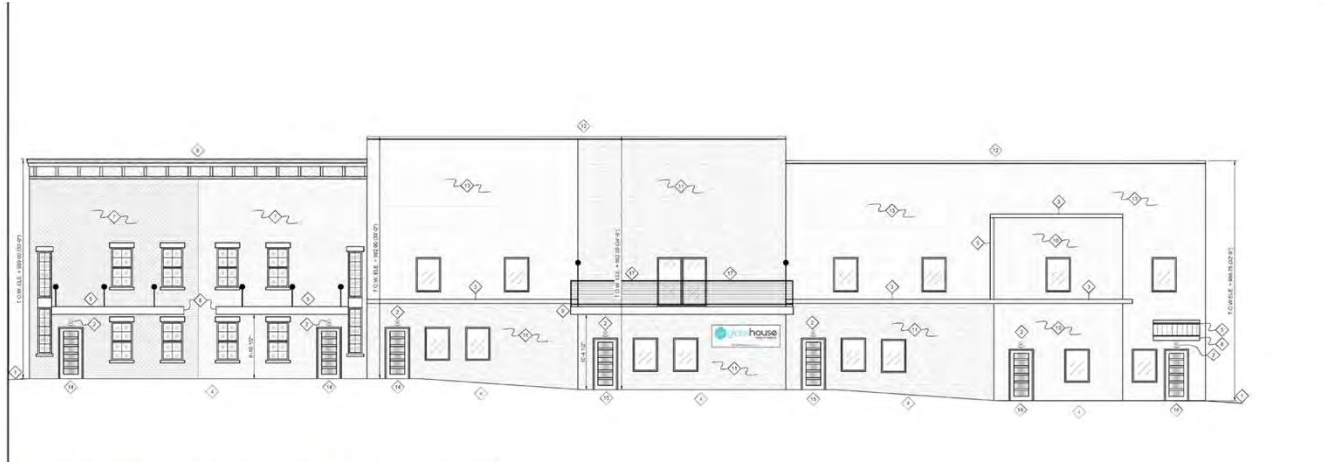


# Major Projects

## Tannery Lot

New Build - Construction  
218 N. Ohio (Downtown)





**Mote & Associates**  
 Engineering, Land Surveying  
 214 W. Fourth St., Greenville, OH 45221 937.541.7111 www.moteandassociates.com

**WEST ELEVATION**  
**THE TANNER SUITES**  
**THE TANNER SUITES, LLC**

PROJECT NO. \_\_\_\_\_  
 DATE \_\_\_\_\_

3 WORKING DAYS BEFORE YOU DIG  
 CALL 800.451.7029  
 OHIO: 614.291.2200  
 MISSOURI: 636.271.1100  
 MISSOURI: 636.271.1100  
 MISSOURI: 636.271.1100

PROJECT NO. 20230042X  
 DATE 02/28/2023  
 SCALE AS NOTED  
 DRAWN BY HBR  
 CHECKED BY JAM  
 DATE 03/01/2023  
 SET NO. GG-01





# Major Projects

## Piper Building

Redevelopment

- Mixed-Use
- Downtown
- Family-Friendly



















# Major Projects

## Central School

Redevelopment

- Mixed-Use
- Downtown
- Housing



















# Major Projects

## Project Phoenix

Redevelopment - 12 Million

- Mixed-Use
- Downtown
- Class A Office

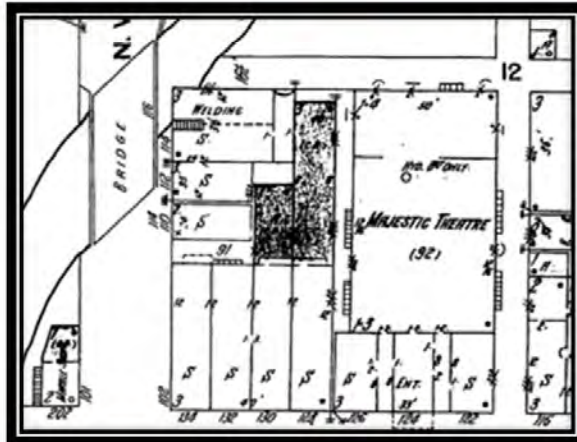
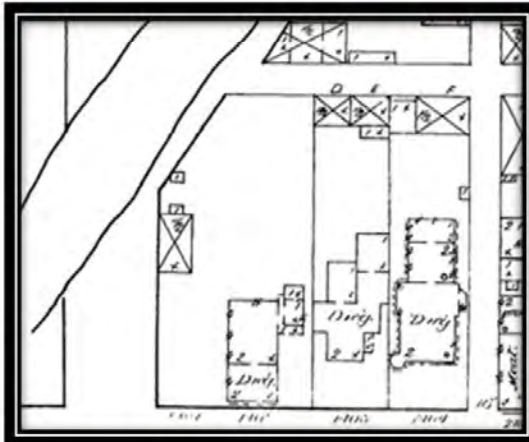


1800s -1907  
Private Residence

1907 - 1988  
3 Story Multi-tenant  
retail building

1988  
Goodwin Furniture  
Fire

1989 - Current  
City Parking Lot











# VOTED

## 2023 BEST DOWNTOWN PLACEMAKING







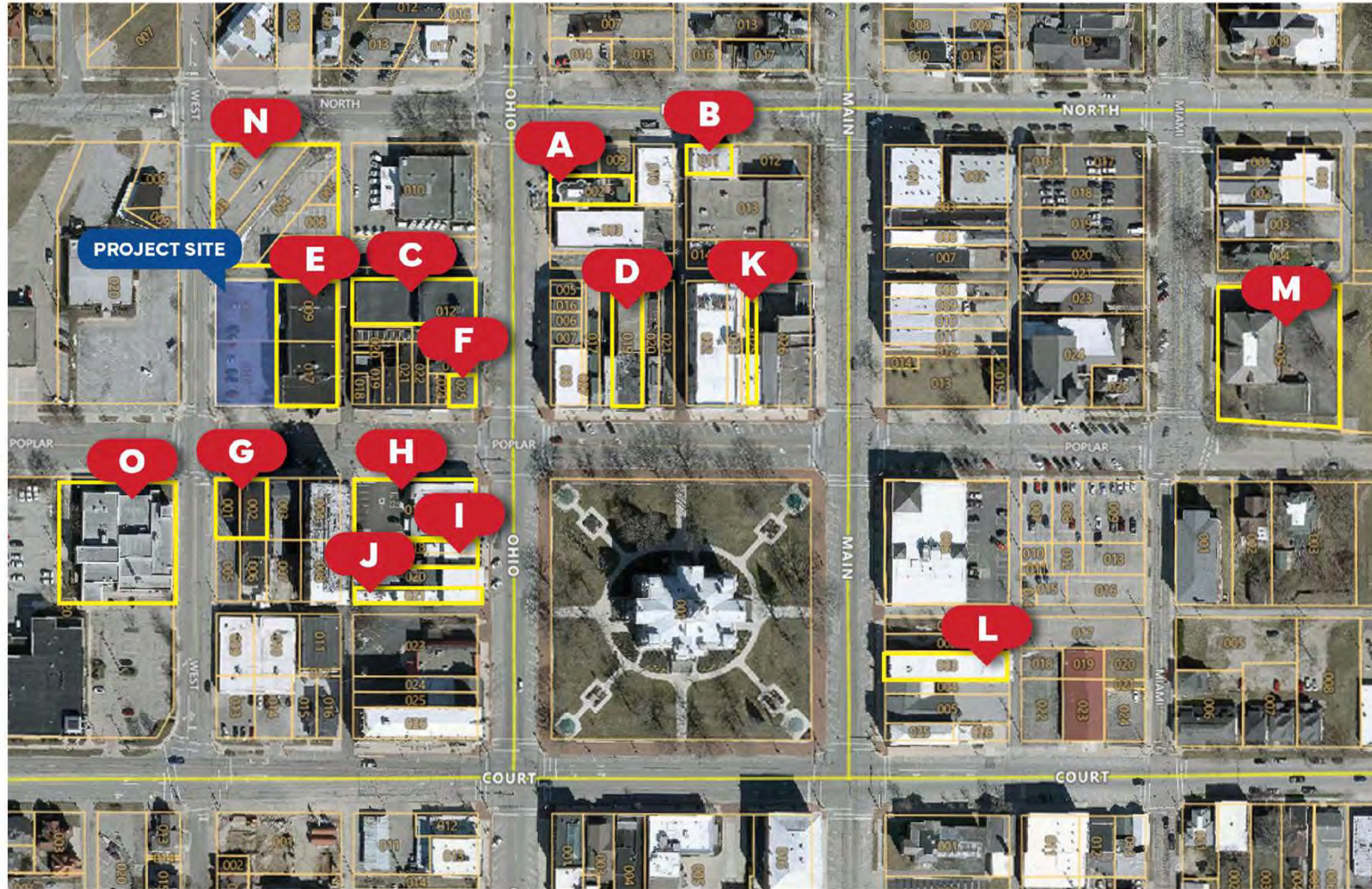






## LEGEND

- A. The New Rainbow Bar & Grill (2024)**  
126 N Ohio Ave - Estimated \$1M - Full Renovation and Expansion
- B. The Waiting Room (2023)**  
121 E North St - Estimated \$300k Café
- C. The Ohio Building (2025)**  
113 N Ohio Ave - Estimated \$13M  
55 Luxury Apartments + Commercial/Retail
- D. Murphy's Building**  
110 E Poplar St - Full Renovation
- E. Sidney Historic Theater**  
120 W Poplar St - \$2.5M - Renovation
- F. Historic Purity Building (2022)**  
101 N Ohio Ave - Full Renovation  
Apartments + Commercial/Retail
- G. The Bridge Restaurant (2023)**  
127 W Poplar St - \$750k  
Full Renovation and Expansion
- H. Vacant 5/3 Bank - Restaurant and Office (2020)**  
101 S Ohio Ave - \$1.6M  
Full Renovation and Expansion
- I. Austeria Wine Boutique (2024)**  
109 S Ohio Ave - \$700k  
Full Renovation and Patio Expansion
- J. Amelio's Pizza (2021)**  
115 S Ohio Ave - Full renovation
- K. Greenhaus Coffee (2022)**  
126 E Poplar St - \$300k - 1st. Floor renovation
- L. Piper Social (estimated 2026)**  
124 S Main Ave - \$3M - Full Renovation
- M. The Central School Lofts (estimated 2026)**  
102 N Miami Ave - \$4M  
15 Luxury Condominiums
- N. 250 Spot Parking Garage (estimated 2026)**  
131 N W St
- O. Municipal Building (2025)**  
201 W Poplar St - Renovation and Addition







# Wayfinding







Sign Proposal for:

## City of Sidney - Downtown Parking Signage

Date: December 15, 2023

Design Copyright of Behr Design, LLC

Provided by



**BEHR DESIGN, LLC**

MARKETING, WEB & CREATIVE AGENCY

114 E. POPLAR STREET, SIDNEY, OHIO • 937492.5704



## COPELAND

Copeland is completing a 4-year \$100 million renovation and expansion of its Sidney location.



## CARGILL

Creation and expansion of almost ~\$300 million in development

# BUSINESS DEVELOPMENT

- Tax Increment Financing (TIF)
- Enterprise Zones (EZ)
- Community Reinvestment Area (CRA) agreements
- Municipal Job Creation Tax Credit program
- Municipal Water Rebate program
- Community Development Block Grant (CDBG) Economic Development grant/loan
- Port Authority Co-operative agreements







## MICHIGAN METAL COATINGS

- 60 Jobs
- \$3.5M Payroll
- Tier 1 Automotive



## KLINGER THERMOSEAL

- \$2M Expansion
- Expanded Engineering
- Polymer Products



## NK PARTS

- \$6.5M Expansion
- 785,000 sq.ft.
- Automotive Logistics





# Major Projects



## I-75 Enhancement Plan

### Beautification

- Interchange Facelifts
- Rt. 47 Improvements
- Landscaping Plan





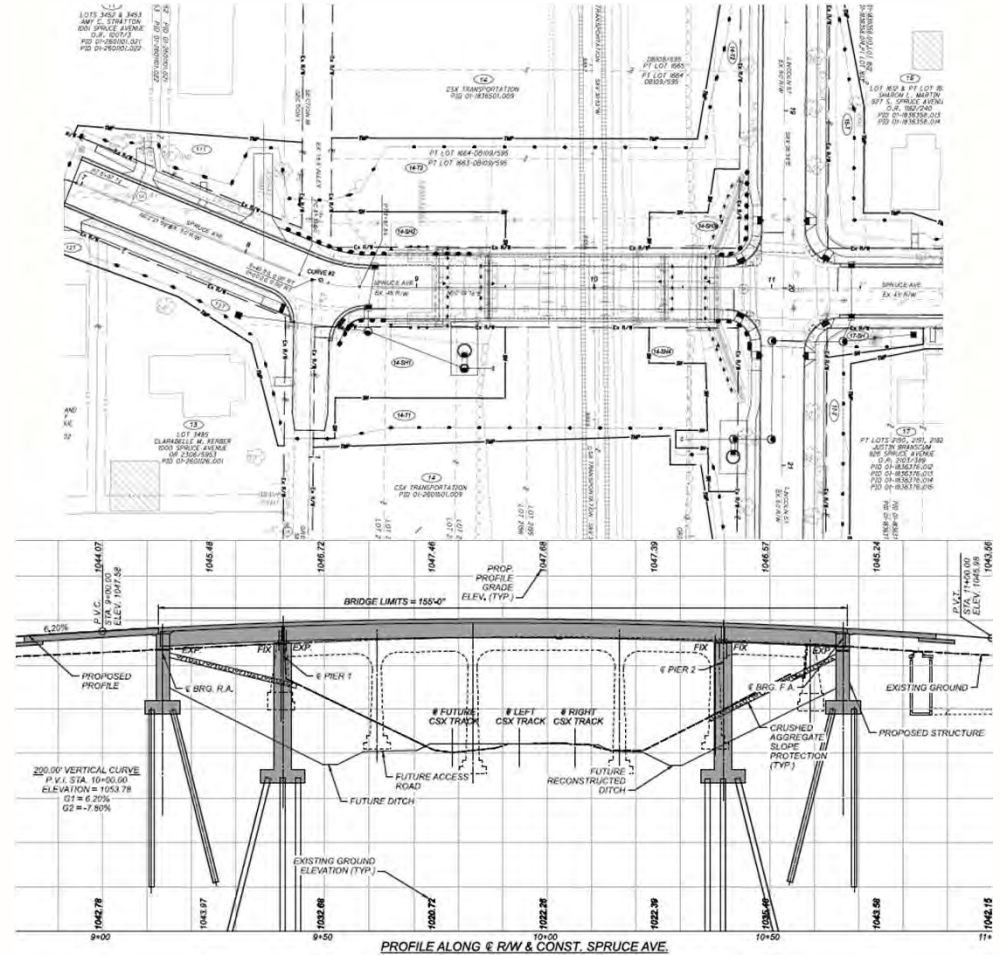
# Major Projects



## Spruce Street Bridge

### Reconstruction

- Over CSX Railroad
- 3-span steel beam structure
- ~\$4.3M Est Cost
- Composite Bridge Deck
- Spring 2026







# Public Works Projects

## Design + Study (RFQ)

- Wilson Avenue Water Main Replacement:
- Wilkinson Avenue & Carey Street Sanitary & Storm Sewer Replacement:
- Water Distribution System Master Plan Study
- Gleason & Kuther Sanitary Sewer Evaluation & Design:

## Streets

- Aldrin Drive Water Main Replacement:
- Arrowhead Drive Water Main Replacement:
- Taft Street Waterline & Sanitary Sewer Replacement:
- Buckeye Avenue Sanitary Sewer Improvements:
- Stewart Subdivision Water & Sewer Replacement Phase I:
- Foraker Avenue Water & Sewer Replacement:
- Hoge-Barrett Wellfield New Water Supply Well Construction:
- 2025 Sidewalk Program:
- WTP Raw Water Pump Replacement:
- Graceland Cemetery Chip & Seal Program:

## ODOT – Sidney Projects

- Urban Paving Program (SR 29 from I-75 to North St): Repaving of SR 29 beginning at I-75 overpass and proceeding on St. Marys Ave. to Pike St. to Ohio Ave. and ending on North St. expected in August/September.
- Spruce Ave. Bridge Replacement PID 114201: Construction expected in 2026.
- Fair Road Bridge: Bridge deck is to be resurfaced.
- Campbell Road Bridge Replacement PID 115808:

## Water + Wastewater

- Stolle Bridge Parking Lot Storm Outfall Replacement:
- S. Vandemark Rd. Water Main Replacement:
- Campbell Rd. Reconstruction:
- Tilberry Run Drainage Ditch Improvements:
- Linden Avenue Water Main Replacement:
- McKinley/Spruce Alley Storm Sewer Improvements:
- Pike Street Sanitary Sewer Replacement:
- Mulberry Place Improvements: St. Marys & Hoewisher Traffic Signal:



# STREET LEVY

## FUNDING FOR:

Construction, Reconstruction, Resurfacing, and Maintenance

- Streets
- Alleys
- Bridges
- Curbs
- Gutters
- Traffic Lights
- Stop Signs

## MAY 2025

Proposed 0.25% 5-year Street Levy

0.15% Street Levy expired at the end of 2024

2010–2020 0.25% Street Levy



## RESPONSIBLE FOR:

- 289 lane miles of roadways
- 18 miles of alleys
- 13 parking lots
- 51 traffic signals
- 5,000 signs
- Street Stripping Maintenance





# Thank You!

We thank you for your continued support in our efforts to build a brighter Sidney!

**Andrew Bowsher**

City Manager

[abowsher@sidneyoh.com](mailto:abowsher@sidneyoh.com)

937-498-8100



# ACCESS OHIO 2050 UPDATE



**Department of  
Transportation**

Access Ohio 2050

**Miami Valley Regional Planning Commission**

**April 3, 2025**

# ACCESS OHIO HISTORY



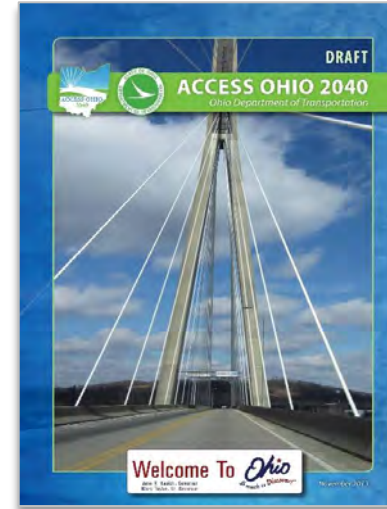
**Access Ohio 2020  
(1993)**

- First statewide plan
- Macro Highway Corridors
- Major improvements



**Access Ohio 2030  
(2004)**

- Expanded Macro Highway Corridors
- Major improvements
- Focus on expansion



**Access Ohio 2040  
(2013)**

- Strategic Transportation System (STS)
- Policy-based
- No capital projects



**Access Ohio 2045  
(2020)**

- STS de-emphasized
- Policy-based
- Scenario-based





# ACCESS OHIO 2050 OVERVIEW



- Plan to Program to Project
- Performance-based
- Updating Strategic Transportation System
- Scenario planning
- Integration with modal and regional plans

# ACCESS OHIO 2050 OVERVIEW



Stakeholder Engagement



Plan Integration



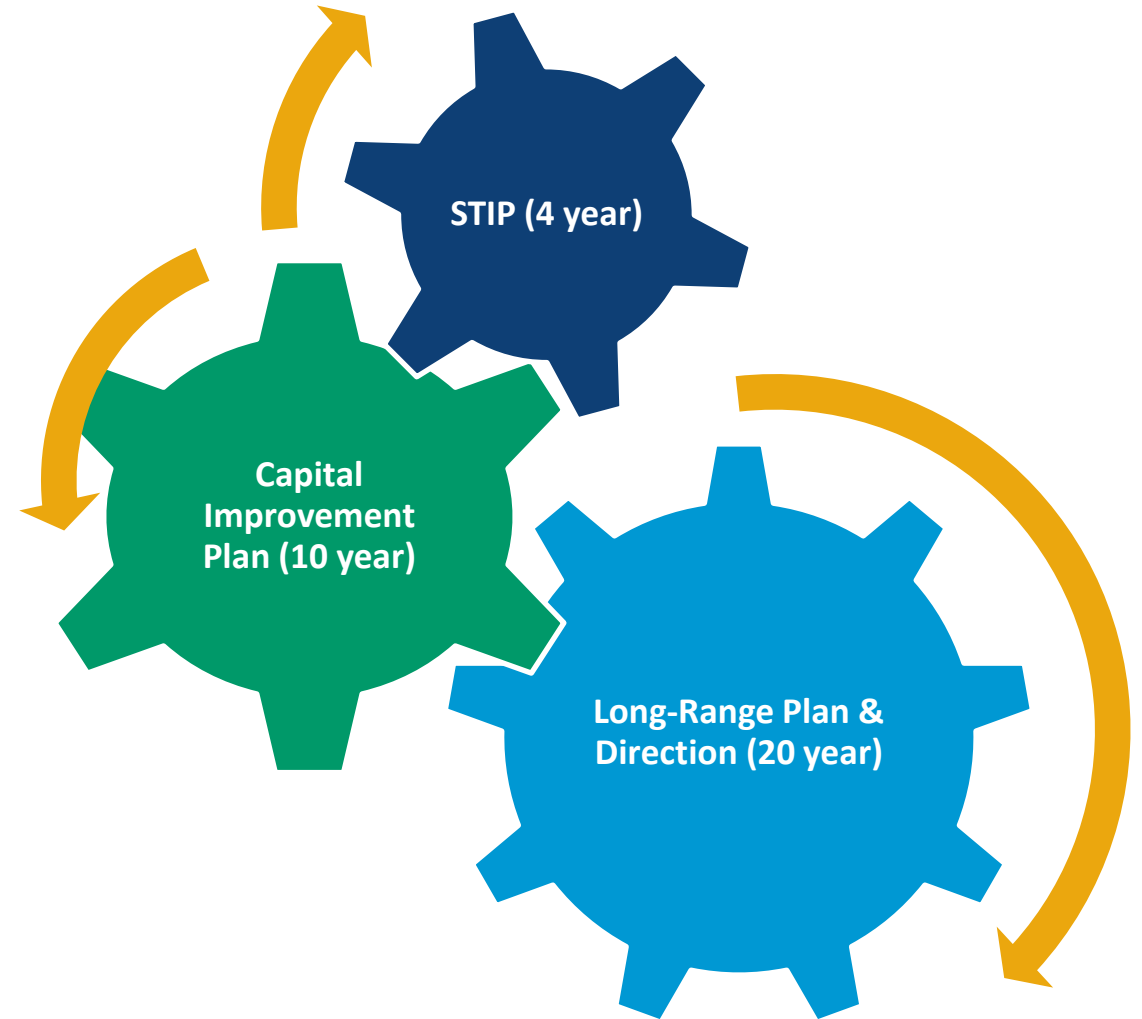
System Identification



System Conditions & Performance



System Investments



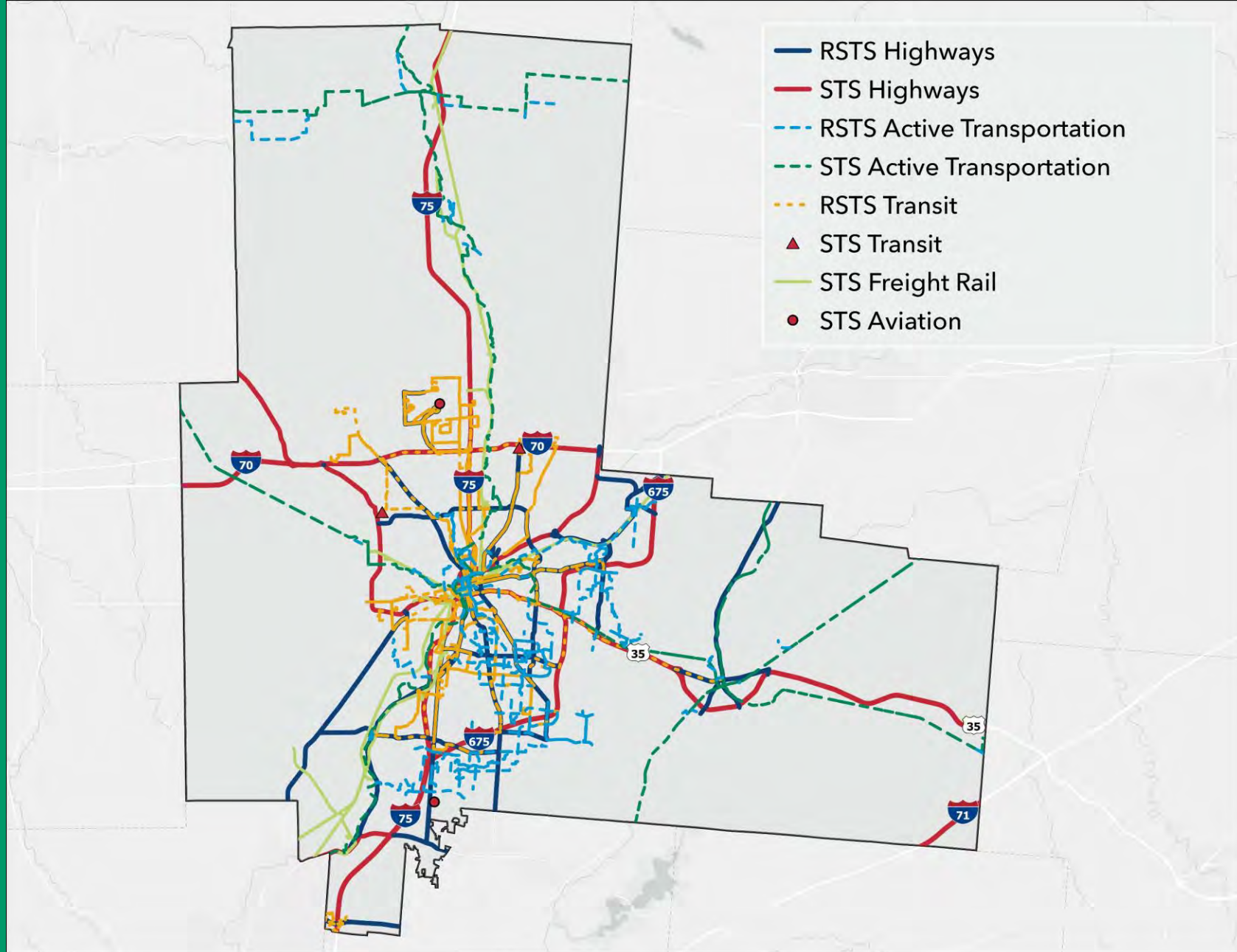
# ACCESS OHIO 2050 INCLUDES UPDATES TO STS & RSTS

- **Strategic Transportation System (STS):** Interstate & inter-regional routes of national/statewide importance
- **Regional Strategic Transportation System (RSTS):** Critical intraregional & intermodal connectors
- **Role in Access Ohio 2050**
  - **Basis for performance management**
  - **Inform Capital Investment Strategy**
    - **STS:** ODOT 10-year Capital Investment Plan
    - **RSTS:** ODOT & MPO partnerships for long-term investment decisions





# Strategic Transportation System (STS) & Regional Strategic Transportation System (RSTS) in MVRPC



# AO50 GOALS – ALIGN WELL WITH OTHER PLANS



Percentage of overlap of AO50 goals with those of other statewide or regional transportation plans

# TPS RESULTS

## Statewide Trends



**Ohioans want more travel options; preferences vary by age.** The majority of survey respondents support a well-balanced multimodal transportation system. Younger residents (18-34) prioritize active transportation, transit, and rail improvements, while residents 35 and over value highway improvements most.



**Preserving the existing highway network is critical.** 97% of respondents want ODOT to prioritize maintaining existing highways and bridges when making future investments.



**Safer Travel is a top priority.** 95% of respondents emphasized the importance of prioritizing roadway safety on infrastructure investments.

## MVRPC Respondents



**Consistent**



**97%**



**96%**

**Yellow** icon indicates preference or consistent finding  
**Red** icon indicates worse finding than statewide average  
**Green** icon indicates better finding than statewide average  
**Arrow up** indicates higher than statewide average  
**Arrow down** indicates below statewide average





# TPS RESULTS

## Statewide Trends



**Congestion on highways, streets and county roads is a frequent challenge.** 90% of respondents value improvements that reduce traffic; with 29% experiencing congestion on city streets/county roads during their daily commutes.



**Reliable freight networks power Ohio's economy.** 93% of respondents thought it was important to have a good freight transportation system to support Ohio's economy



**More than a third of respondents face dangerous travel conditions near their homes.** 39% of respondents report experiencing a lack of sidewalks or safe walking facilities at least weekly and 37% encounter high-speed traffic within one mile of their homes on a daily or near-daily basis

## MVRPC Respondents



89% reduce traffic



32% city/county



95%



35% lack sidewalks



40% high-speed

**Yellow** icon indicates preference or consistent finding

**Red** icon indicates worse finding than statewide average

**Green** icon indicates better finding than statewide average

**Arrow up** indicates higher than statewide average

**Arrow down** indicates below statewide average



# TPS RESULTS

## Statewide Trends



**Safer walking and bike paths are needed, especially for those most reliant upon them.** Residents that do not drive are more likely to report a lack of safe walking facilities and bike paths near their home.



**Ohioans support public transit investments in cities and rural areas.** 82% of respondents thought it was important to provide public transportation to Ohio's cities and rural areas.



**Ohioans want transportation investments that generate multiple benefits.** More than 90% of respondents indicated it's important that transportation improvements promote economic development, enhance the quality of life for residents, and meet the needs of people with disabilities or those who lack access to a vehicle.

## MVRPC Respondents



Consistent



81%



92% needs of disabled  
90% economic dev.  
90% quality of life

**Yellow** icon indicates preference or consistent finding  
**Red** icon indicates worse finding than statewide average  
**Green** icon indicates better finding than statewide average  
**Arrow up** indicates higher than statewide average  
**Arrow down** indicates below statewide average



# UPCOMING MPO & STAKEHOLDER MEETINGS

Date	City	Location	District
May 6	Toledo	TMACOG	D2
May 7	Cincinnati	OKI	D8
<b>May 8</b>	<b>Dayton</b>	<b>MVRPC</b>	<b>D7</b>
May 12	Columbus	MORPC	D6
May 20	Youngstown	Main Library	D4
May 21	Akron	ODOT District 4	D4
May 27	South Point	Greater Lawrence Area Chamber	D9
May 28	Marietta	Buckeye Hills Regional Council	D10

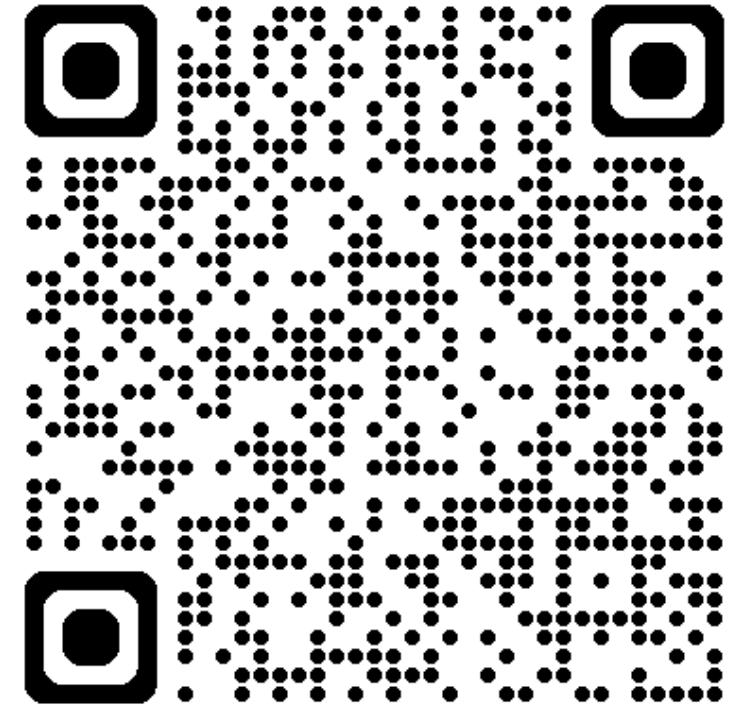


# ADDITIONAL MEETINGS TO BE SCHEDULED (LOCATION/DATES TBD)

City	ODOT District
Lima	D1
Ashland or Mansfield	D3
Cambridge	D5, D11
Cleveland	D12



# LEARN MORE & STAY ENGAGED BY VISITING OUR WEBSITE



[transportation.ohio.gov/accessohio](https://transportation.ohio.gov/accessohio)





**Department of  
Transportation**

[transportation.ohio.gov](http://transportation.ohio.gov)

**THANK YOU**





**TOOL K**

MIAMI VALLEY  
STORY  
PROJECT

**TOOL A**

REGIONAL  
GEOGRAPHIC  
INFORMATION SYSTEM

**TOOL J**

NATURAL RESOURCES  
PRESERVATION AND  
ENHANCEMENT

**TOOL B**

ECONOMIC  
DEVELOPMENT  
DATABASE DATA  
SUPPORT



**MIAMI VALLEY**

Regional Planning Commission

**GOING PLACES  
IMPLEMENTATION TOOLS**

**TOOL C**

RETURNS ON  
INVESTMENT / IMPACT  
ANALYSIS TOOL

**TOOL I**

SUSTAINABLE  
DEVELOPMENT AND  
REDEVELOPMENT

**TOOL H**

REGIONAL  
COLLABORATION  
TRAINING PROGRAM

**TOOL D**

REGIONAL ASSETS  
AND ECONOMIC  
ANALYSIS

**PROGRESS UPDATES**

**TOOL G**

LOCAL JURISDICTION  
COORDINATION ON  
SPECIFIC ISSUES

**TOOL E**

PROJECT FUNDING  
COMPETITIVENESS  
ANALYSIS

**TOOL F**

REGIONAL  
TRANSPORTATION  
AND DEVELOPMENT  
FORUM



# PLAN4Health Miami Valley



# ELEVEN IMPLEMENTATION TOOLS

## PRIORITY #1

Better Information for  
Stronger Decision Making

**TOOL A:** Shared Regional Geographic Information System (GIS)

## PRIORITY #2

Strengthen Regional  
Collaboration

**TOOL F:** Forum for Regional Transportation and Development

**TOOL G:** Targeted Subgroups to Address Specific Issues of Local Jurisdiction Coordination

## PRIORITY #3

Build the Region's Capacity  
for Solution

**TOOL I:** Innovative Solutions for Sustainable Development and Redevelopment



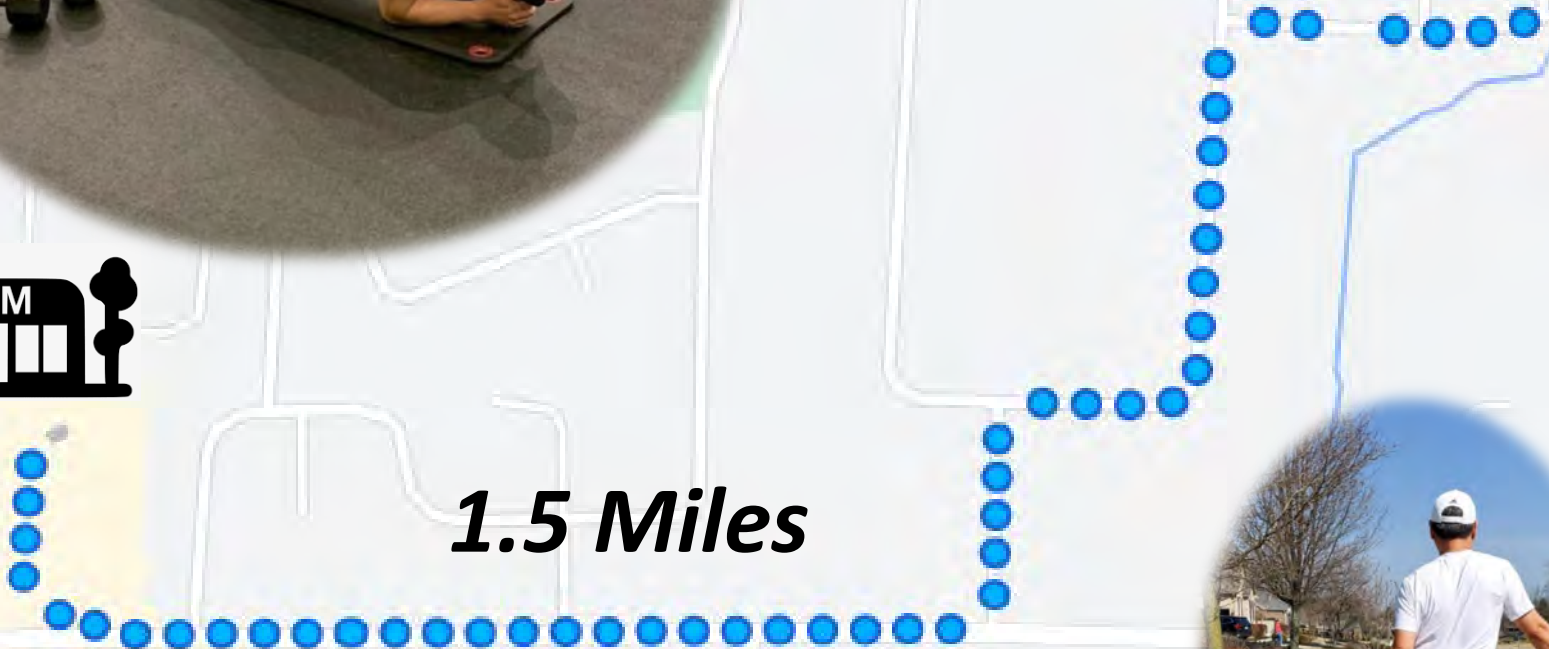
# DISCLAIMER

This is a fictional story. The names, characters, businesses, events, and incidents are the products of the author's imagination. Any resemblance to actual persons or actual events are coincidental.

# Episode 4: Meet City of Healthyville Healthy Food Coalition



# Remember Brian Kim?



**1.5 Miles**



**15 Min**





3/26/22 ~ 1/2/25 >



**Diet Coke**















# Improving Regional Food System makes Healthy Eating Choice an Easy Choice





# Regional Food System Overview

PLAN4Health - Miami Valley Initiative

Miami Valley Regional Planning Commission | Published October 31, 2024

## Regional Food System Overview



Assets



Security



Access

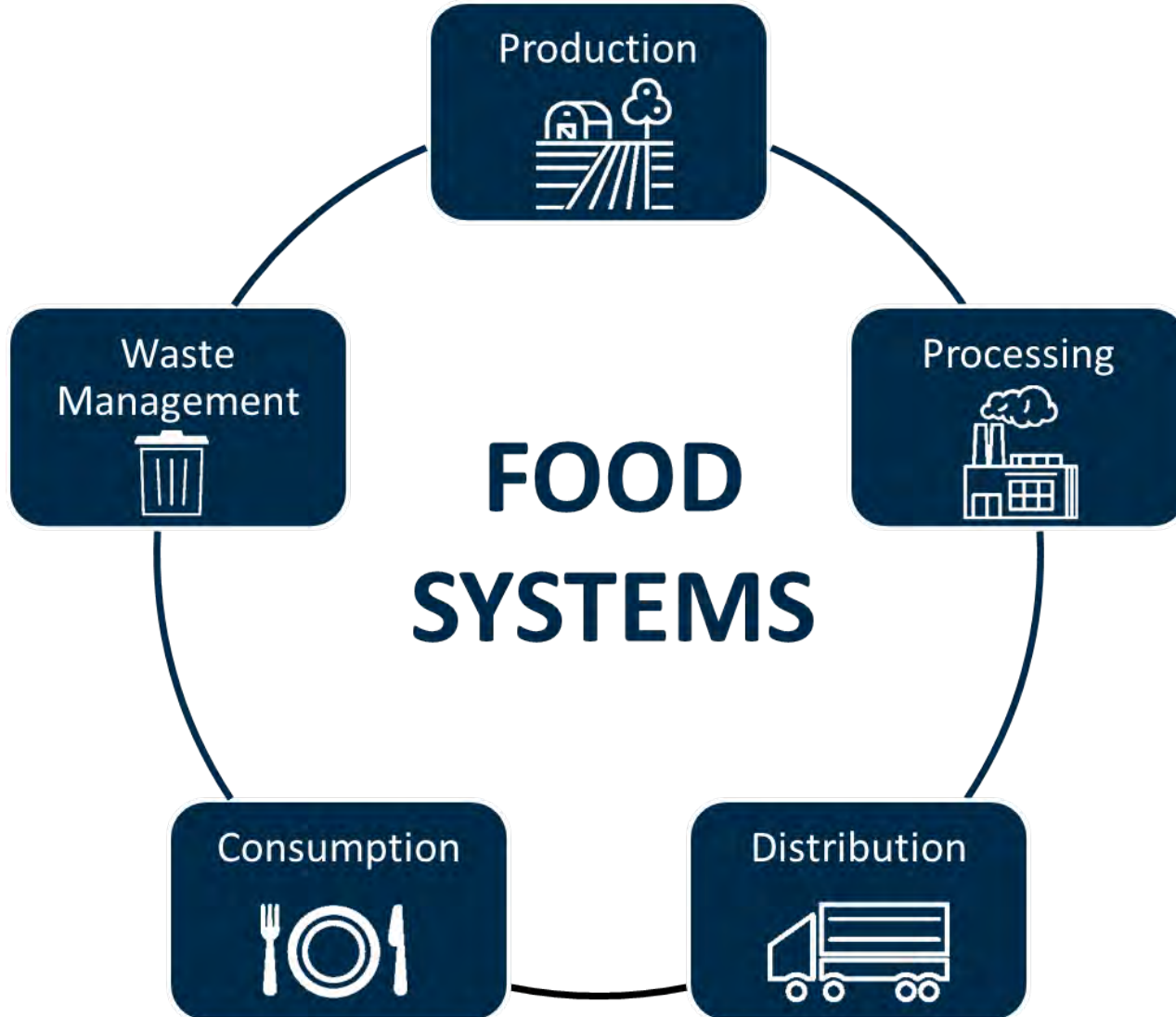
<https://tinyurl.com/rru5rh3f>



SCAN ME



# Food Systems





Planning is fundamentally tied to our food system in terms of land use, transportation, environment, and economic development.





# Regional Food System Overview



## Food Assets

- Regional agricultural facts and figures
- Regional food manufacturing firms and employment
- Key food distribution information related to stores, restaurants, etc.



## Food Security

- Data on local food insecure populations
- Average meal cost information
- Food assistance programs



## Food Access

- How access is measured
- Maps showing low access measures
- Limited access to healthy food trends
- Low Access population information





# Food Security

## Factors Impacting Food Security



Low Wages



Poverty Status

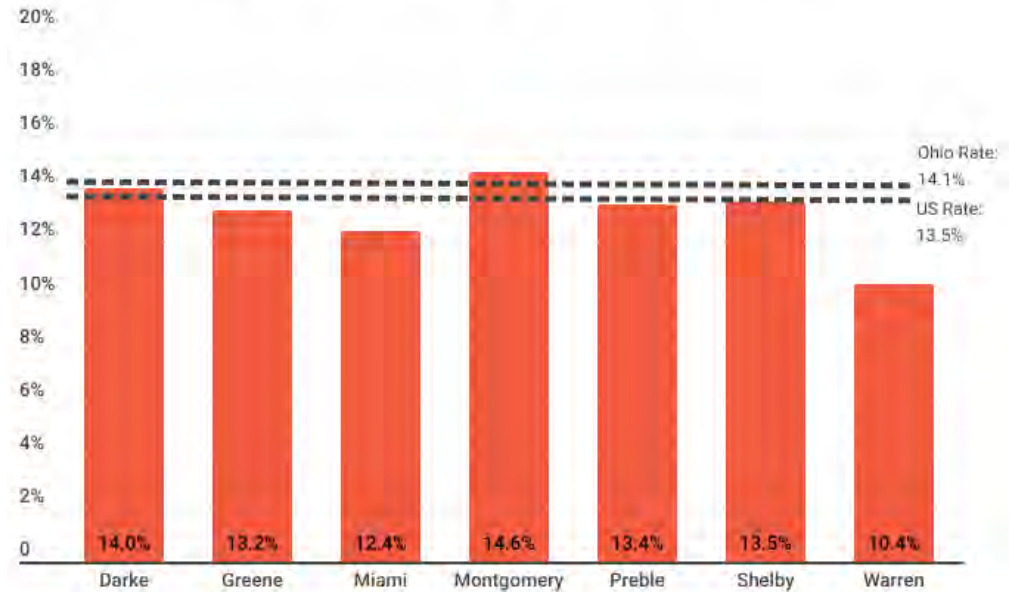


Unemployment



Food Costs

## Food Insecure Population: 2022



Source: Feeding America, 2022 Data

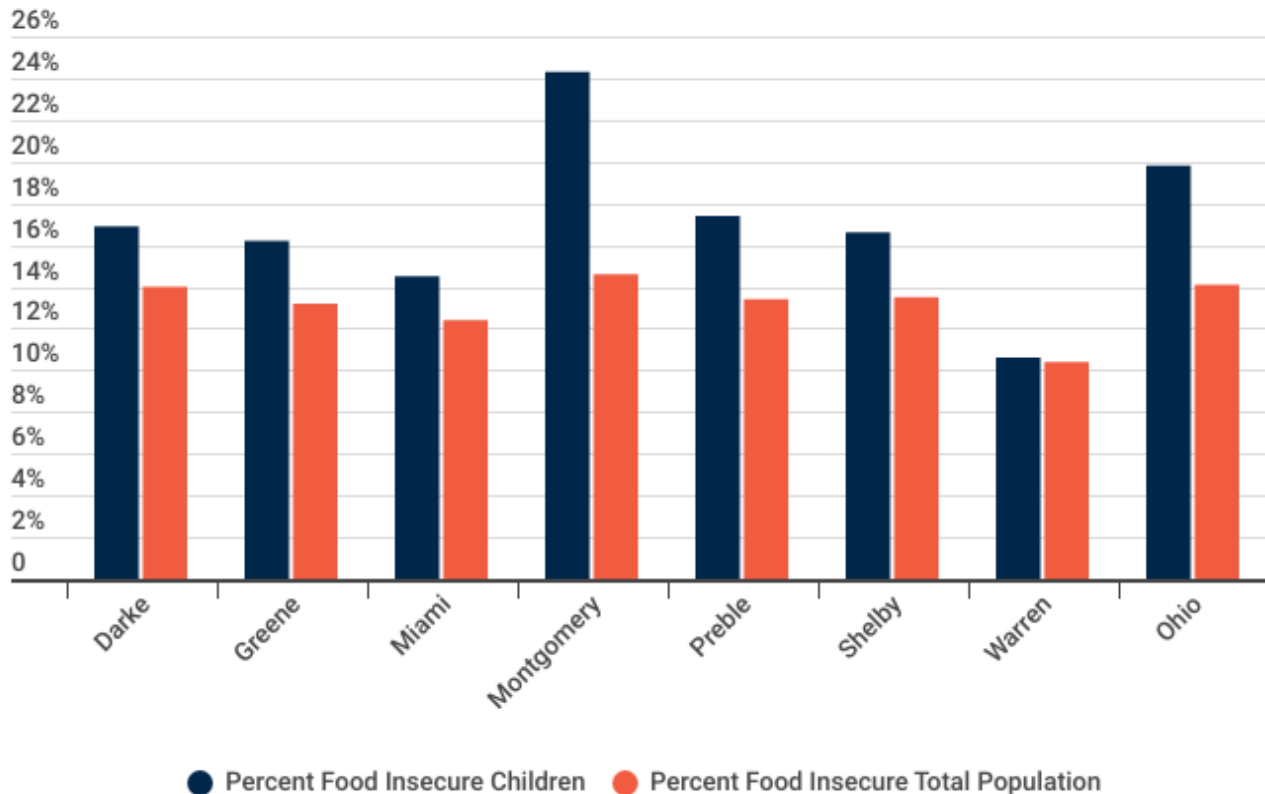
In 2022, there were **more than 158,700** (13%), food insecure people in the Region.



# Food Security

Some groups face higher rates of food insecurity.

## 2022 Food Insecure Children vs Total Population



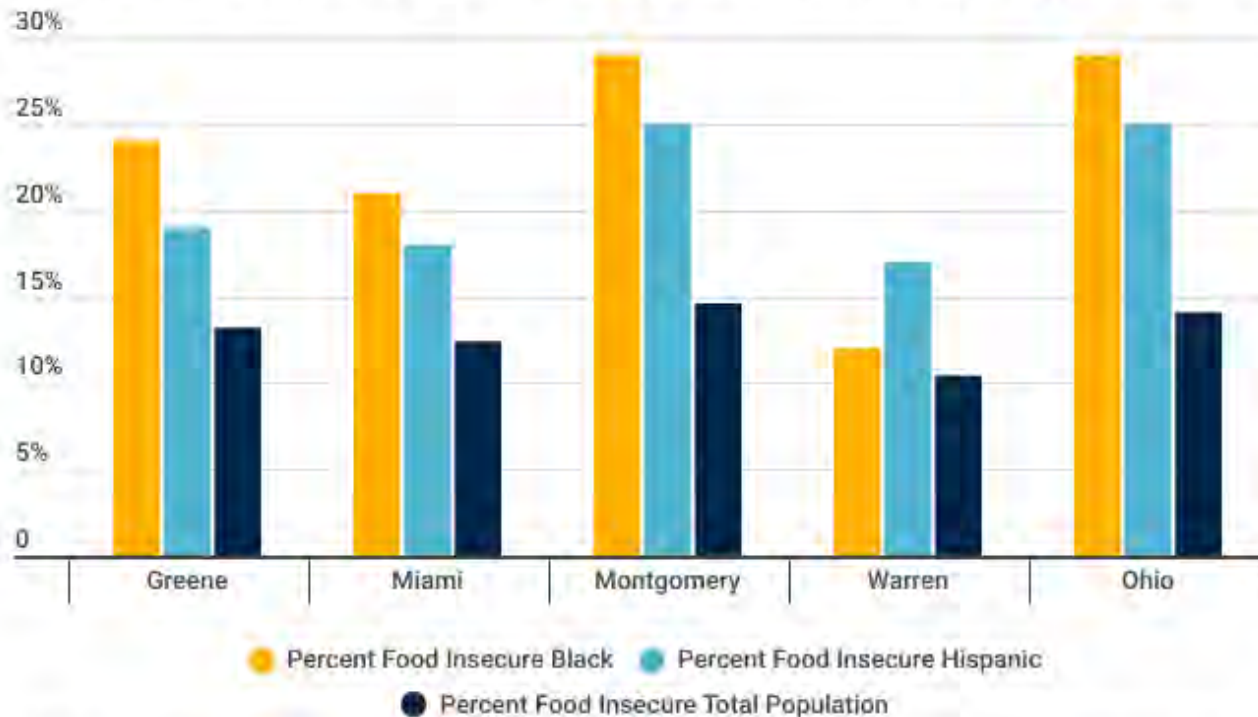
In the U.S. one in five children does not know where their next meal will come from.



# Food Security

Some groups face higher rates of food insecurity.

## Food Insecurity Among Selected Populations



The Region's Black and Hispanic populations face higher rates of food insecurity.

*There was limited or no data available for Darke, Preble, and Shelby counties. Data for other races and ethnic groups was not available.*

Source: Feeding America, 2022 Data





# Food Access

## Measuring Access



Urban vs. Rural Area



Low Income Status



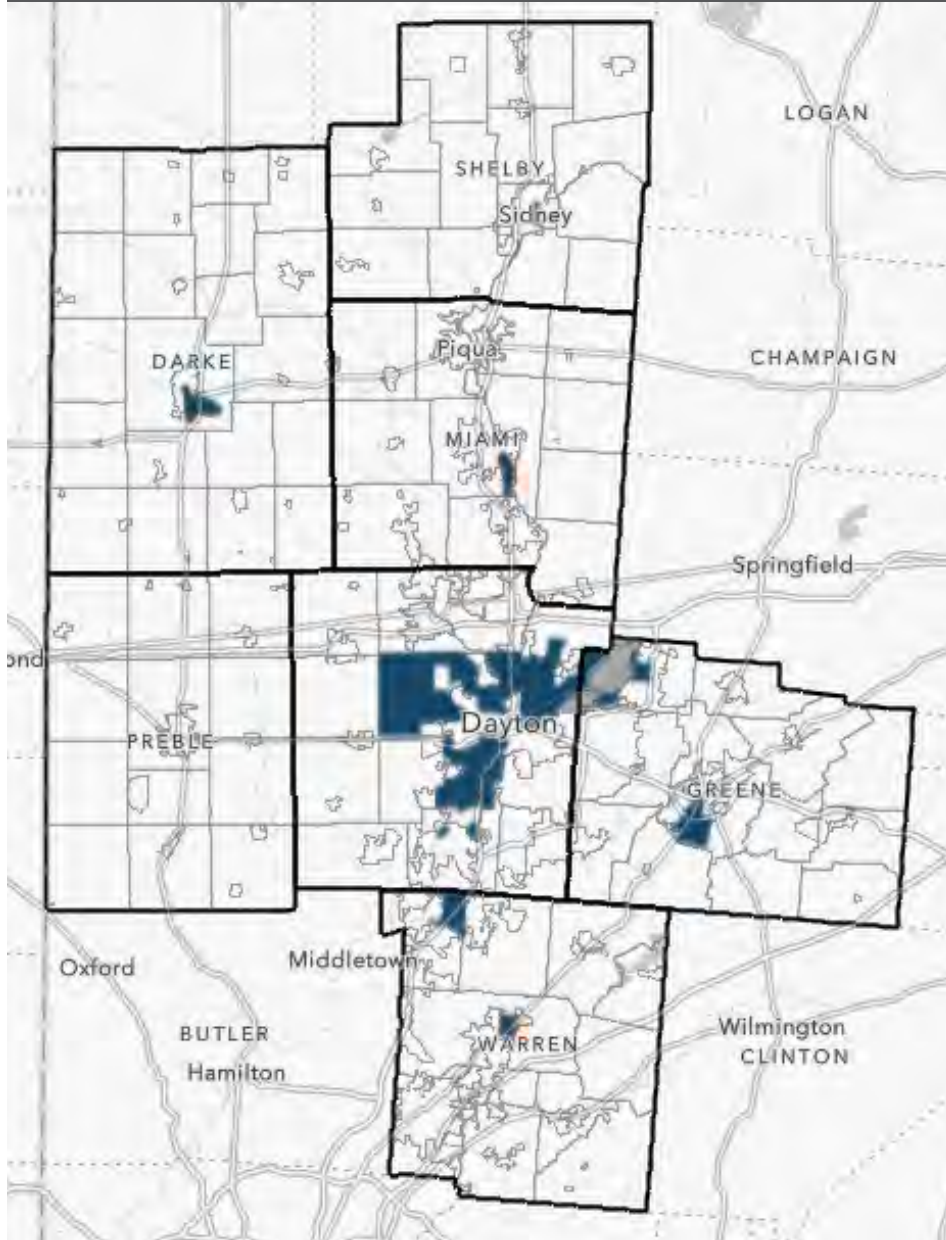
Vehicle Access



Distance from Food Stores



# Low Income & Low Access



## Measuring Access



Urban vs. Rural Area



Low Income Status

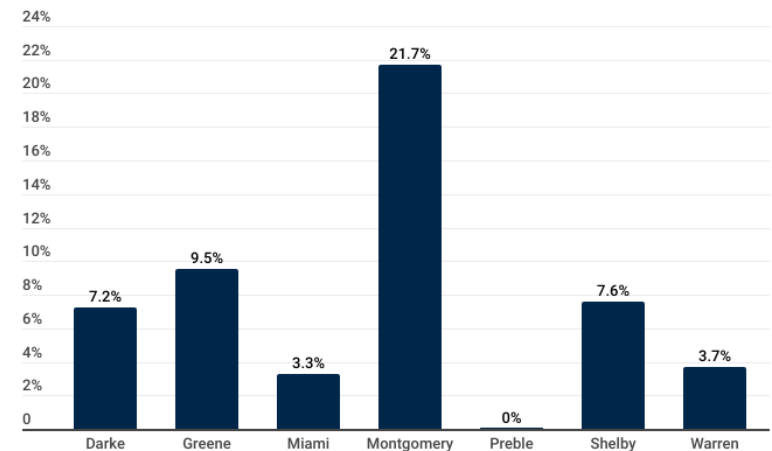


Vehicle Access



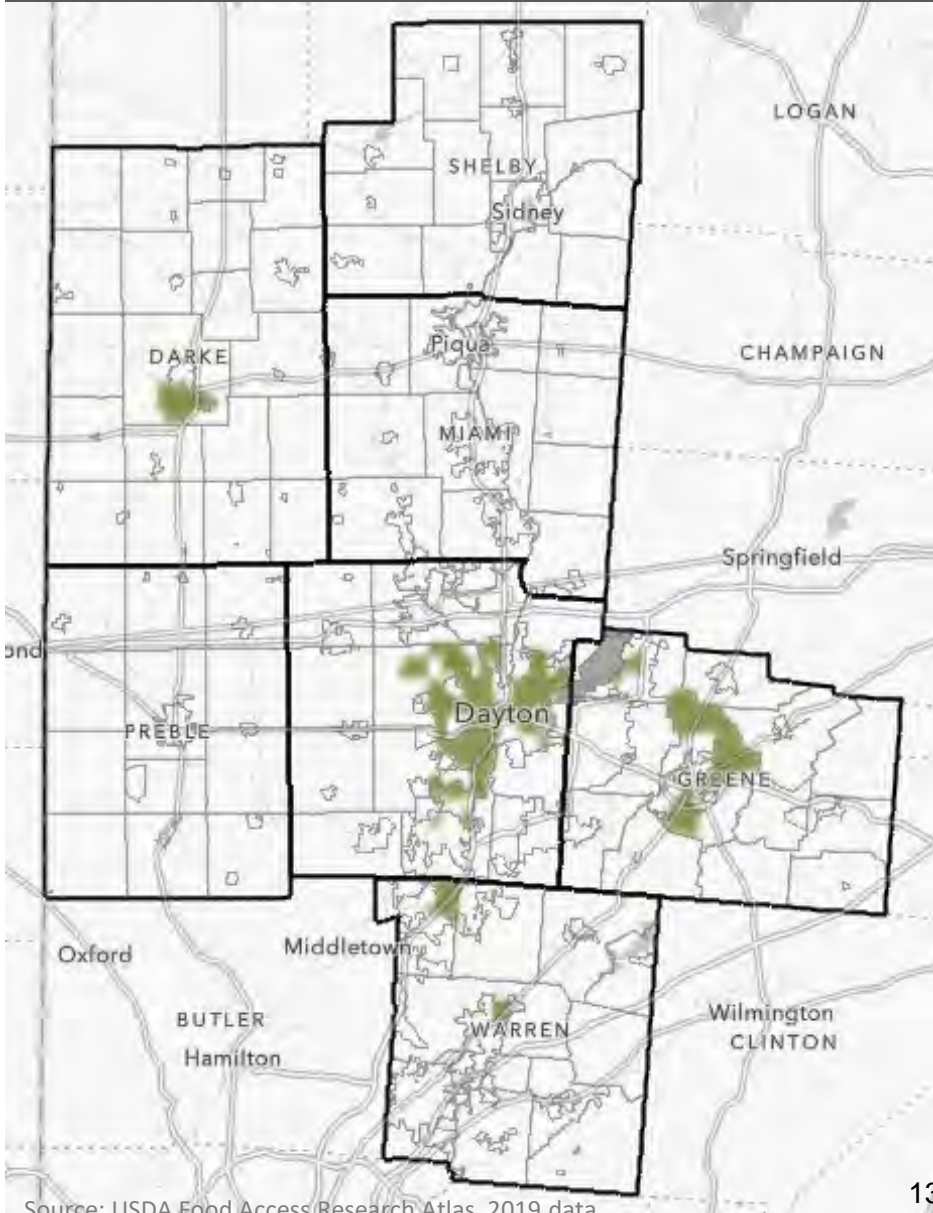
Distance from Food Stores

## Percent of Population in Low Income Low Access Areas



Source: Miami Valley Regional Planning Commission

# Low Income, Low Access, & Low Vehicle Availability



## Measuring Access



Urban vs. Rural Area

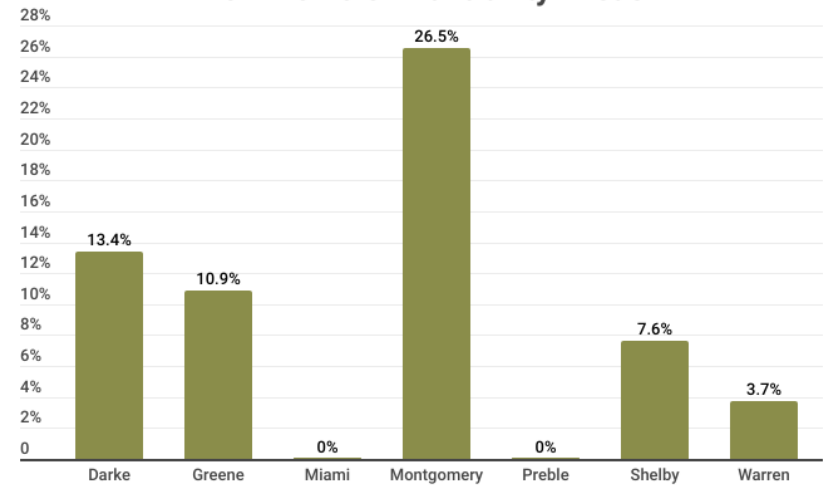


Vehicle Access

Low Income Status

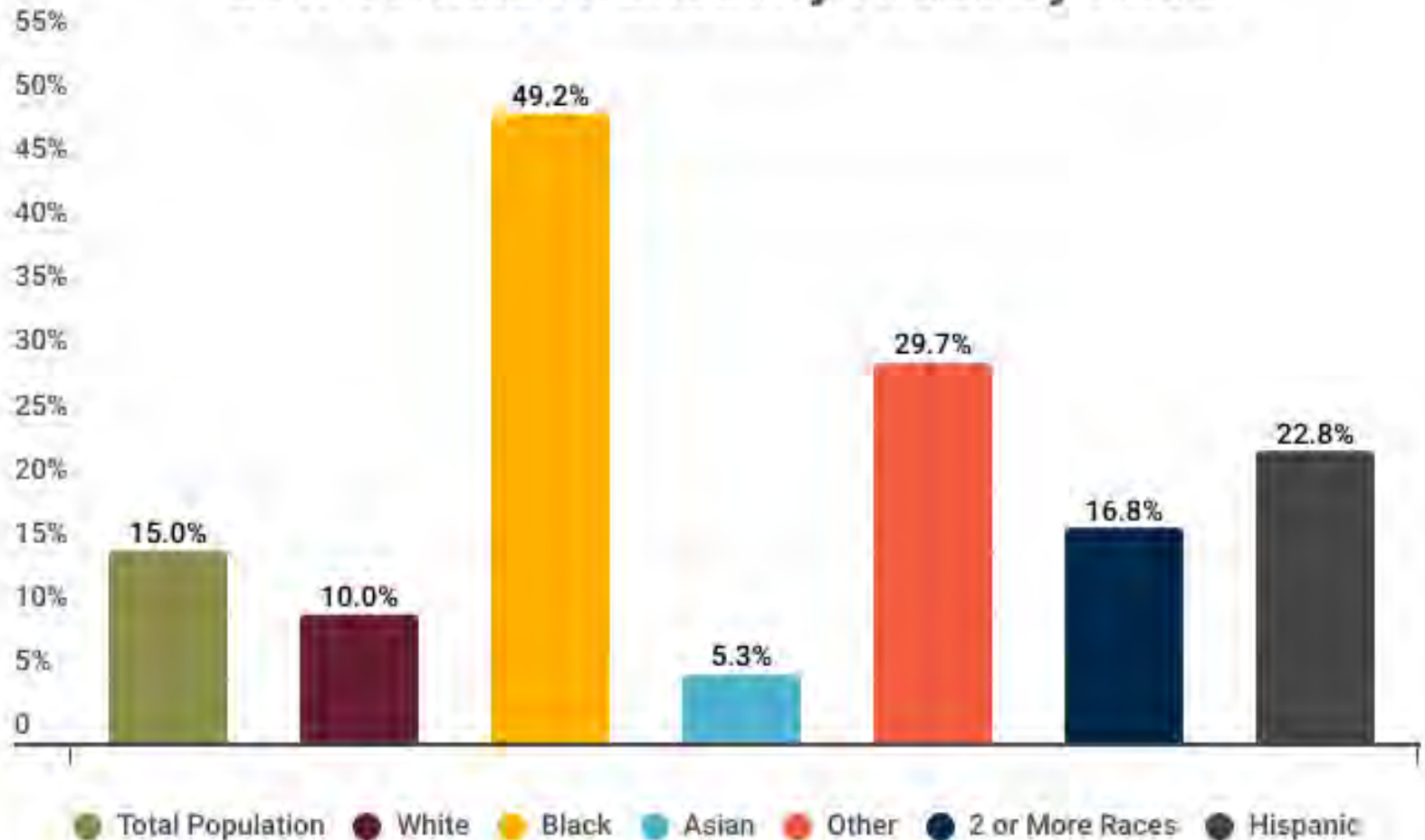
Distance from Food Stores

## Percent of Population in Low Income, Low Access, and Low Vehicle Availability Areas





## Percent of Population in Low Income, Low Access, and Low Vehicle Availability Areas by Race





# Our development choices impact our food environment and health outcomes







### Background and Resources

**Why Plan for Health?**  
Planning and health are intrinsically linked. Born out of the deplorable living conditions associated with the Industrial Revolution, the practice of planning originated with a public health focus. Today, health and safety are primary tenets of planning practice.

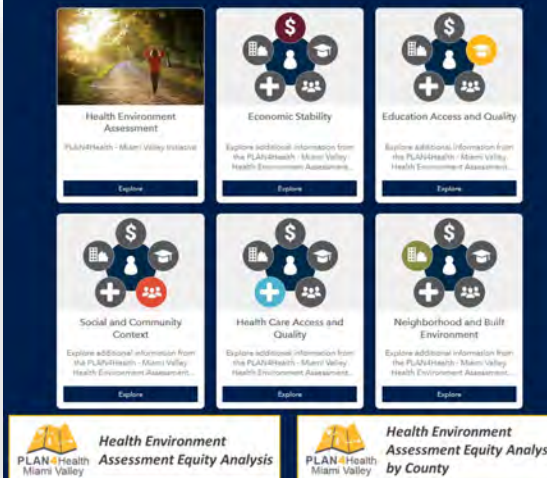
Because planning is the means by which communities manage and modify their physical space, it shapes economic, social, and environmental conditions. Planning affects the environments in which people live, work, and play. These environments can impact health in a variety of ways. Through thoughtful planning the goal of a healthy community can be achieved.



**Place-Based Approach**  
Improved Health Outcomes throughout the Miami Valley  
**People Based Approach**

**Approaches to Achieving a Healthy Community**  
When it comes to improving health throughout the community, there are people-oriented solutions and place-based solutions. The people-oriented actions seek within—the food we eat, our physical activity level, or the medical care we receive—can influence our health outcomes. However, and equally as important as people-oriented solutions, the way in which our communities are designed and the opportunities created in the places where we live, work, and play can all impact our health outcomes. Quality housing, safe transportation options, clean air and water, and access to economic opportunities are just a few examples of how place-based solutions can impact the community's health. The PLAN4Health - Miami Valley focuses on how we can use place-based actions to improve health outcomes throughout the Region.

Learn More  
American Planning Association PlanHealth Project  
Ohio Department of Health, Creating Healthy Communities  
Centers for Disease Control and Prevention Health in All Places  
Health Policy Institute of Ohio 2021 Health Value Dashboard  
2022 County Health Rankings



**Health Environment Assessment Equity Analysis**  
PLAN4Health - Miami Valley

**Health Environment Assessment Equity Analysis by County**  
PLAN4Health - Miami Valley

The grid contains six cards for exploration: Health Environment Assessment, Economic Stability, Education Access and Quality, Social and Community Context, Health Care Access and Quality, and Neighborhood and Built Environment. Each card includes a brief description and a link to explore.

## PLAN4Health - Miami Valley Workshops

A series of workshops are planned as part of the PLAN4Health - Miami Valley Initiative. Past workshop materials and future workshop notices will be shared here.

### Workshop 1: Social Determinants of Health

Held Tuesday, May 17, 2022

[Agenda](#) | [Presentation](#) | [Workshop Summary](#)



### Workshop 2: Active Living

Held Thursday, March 2, 2023

[Agenda](#) | [Presentation](#) | [Workshop Summary](#)




**Health Environment Assessment Equity Analysis**  
August 2022

This report assesses things that impact how well and how long we live. Research indicates that health and well-being are influenced by everything from education to the environment we live in. Collectively, these factors are called Social Determinants of Health (SDOH). SDOH are defined as "conditions in the environment in which people are born, live, learn, work, play, and age that affect a wide range of health, functioning, and quality-of-life outcomes and risks."

The Health Environment Assessment (HEA) that is part of the PLAN4Health - Miami Valley Initiative, uses a SDOH-based to examine conditions related to social, behavioral, built, and planning environments in the Region.

The 2020 Index Map, built from 23 indicators across 3 domains (see the People, Environment, Assessment) reporting conditions in the Miami Valley Region at the neighborhood level.

Both maps were updated.



**Built Environment Assessment Equity Analysis**  
March 2023

The environments where we live, work, and play impact our health and well-being. Planning shapes our communities and planning for healthy communities is an effective way to achieve better health outcomes and greater quality of life.

Healthy communities are those in which all have the best medical advice and treatment. A healthy community is one "where all individuals have access to healthy built, social, economic, and natural environments that give them the opportunity to live their lives and prosper regardless of their race, ethnicity, gender, income, age, abilities, or other socially defined characteristics (1)".

Creating communities where healthy choices are easy choices and the built environment is conducive to active living is a missing but critical planning goal effectively impact the health and well-being of the Region's residents. Active living isn't just about getting in the gym or going for a run. Active living is a way of life that integrates physical activity into everyday routines, such as walking to the store or biking to work or school.

The Built Environment Assessment (the second report from the PLAN4Health - Miami Valley Initiative) examined inter-related physical environmental conditions for their ability to support active living. The Active Community Index (ACI) was developed for the purpose of establishing a comprehensive baseline of how communities are doing with respect to their built form. As such, the ACI Interim Report (2) examines that influence active living. Land Use, Pedestrian-Friendly Environment, and Activity Interactivity.


### Open Data

The environments where we live, work, and play impact our health and well-being. Planning shapes our communities and planning for healthy communities is an effective way to achieve better health outcomes and greater quality of life.

Healthy communities are those in which all have the best medical advice and treatment. A healthy community is one "where all individuals have access to healthy built, social, economic, and natural environments that give them the opportunity to live their lives and prosper regardless of their race, ethnicity, gender, income, age, abilities, or other socially defined characteristics (1)".

Creating communities where healthy choices are easy choices and the built environment is conducive to active living is a missing but critical planning goal effectively impact the health and well-being of the Region's residents. Active living isn't just about getting in the gym or going for a run. Active living is a way of life that integrates physical activity into everyday routines, such as walking to the store or biking to work or school.

The Built Environment Assessment (the second report from the PLAN4Health - Miami Valley Initiative) examined inter-related physical environmental conditions for their ability to support active living. The Active Community Index (ACI) was developed for the purpose of establishing a comprehensive baseline of how communities are doing with respect to their built form. As such, the ACI Interim Report (2) examines that influence active living. Land Use, Pedestrian-Friendly Environment, and Activity Interactivity.



Health

## Housing Mobility and Accessibility Assessment

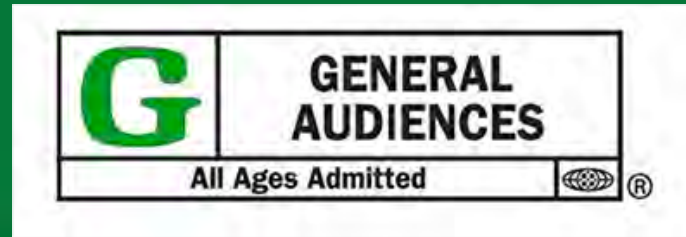
Cross-Examination of Household Income and Housing Costs

Miami Valley Regional Planning Commission |  
Published March 24, 2023





The following PREVIEW has been approved for appropriate audiences



## Episode 5: Advancing Health in the City of Healthyville



**TOOL K**

MIAMI VALLEY  
STORY  
PROJECT

**TOOL A**

REGIONAL  
GEOGRAPHIC  
INFORMATION SYSTEM

**TOOL J**

NATURAL RESOURCES  
PRESERVATION AND  
ENHANCEMENT

**TOOL B**

ECONOMIC  
DEVELOPMENT  
DATABASE DATA  
SUPPORT



**MIAMI VALLEY**

Regional Planning Commission

**GOING PLACES  
IMPLEMENTATION TOOLS**

**TOOL C**

RETURNS ON  
INVESTMENT / IMPACT  
ANALYSIS TOOL

**TOOL I**

SUSTAINABLE  
DEVELOPMENT AND  
REDEVELOPMENT

**TOOL H**

REGIONAL  
COLLABORATION  
TRAINING PROGRAM

**TOOL D**

REGIONAL ASSETS  
AND ECONOMIC  
ANALYSIS

**PROGRESS UPDATES**

**TOOL G**

LOCAL JURISDICTION  
COORDINATION ON  
SPECIFIC ISSUES

**TOOL E**

PROJECT FUNDING  
COMPETITIVENESS  
ANALYSIS

**TOOL F**

REGIONAL  
TRANSPORTATION  
AND DEVELOPMENT  
FORUM

# EXECUTIVE DIRECTOR'S UPDATE

From Brian O. Martin, AICP  
mvrpc.org



**MIAMI VALLEY**  
Regional Planning Commission  
Shaping Our Region's Future Together

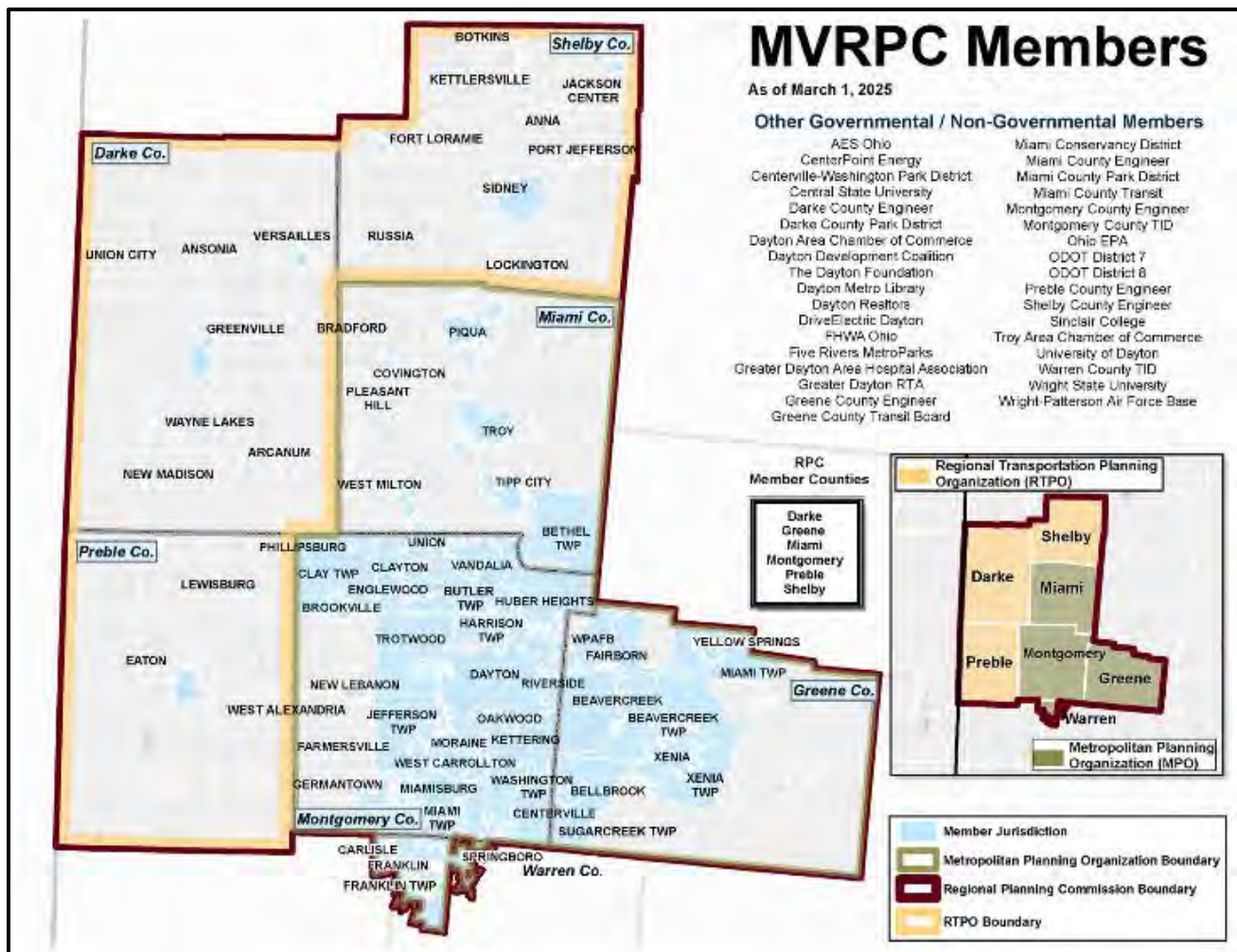
April 2025

## Join us in Welcoming the Village of West Alexandria as MVRPC's Newest Member!

MVRPC proudly welcomes the Village of West Alexandria, located in Preble County, as our newest member. This charming village, founded in 1818, has a rich history and a strong sense of community conveniently situated along State Route 35. The village is led by Mayor Jeff Hickey, alongside an engaged Village Council and key officials such as the Village Administrator, Fiscal Officer, and Police Chief.

With the addition of West Alexandria, MVRPC now has 106 members, including 71 governmental entities and 35 non-governmental organizations, all working together to strengthen the Miami Valley Region.

For information on MVRPC membership and regional initiatives, visit [mvrpc.org](http://mvrpc.org).





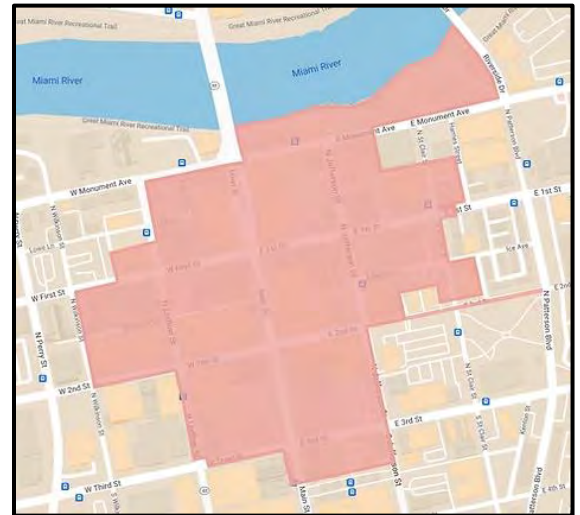
## Settling In: MVRPC's Move, Office Updates, and NATO Impacts



MVRPC began moving into our new office location at [6 North Main Street, Suite 400](#) in Dayton on December 26, 2024. The team of Mike Lucas, Elizabeth Baxter and Savannah Diamond, IT consultants, and move vendors made the process of moving easier for the remainder of the team. Periodic contributions by all members of the staff as they began to report to the new office from January 3, 2025 through current has made the sterile office shell start to look and feel like MVRPC offices. Staff contributions from setting up the kitchen, organizing furniture, installing pictures, setting up the conference rooms as well as their personal offices were greatly appreciated. Every

aspect of forming our new home: parking locations, vehicle loading and unloading, using the loading dock, what to do and where to go in case of emergencies, wi-fi and use of computer, use of A/V, drinking water, furniture assembly, use of elevators and stairs has been tested and procedures developed so far.

A wrinkle in our planning has been the [NATO Parliamentary Assembly](#) and associated street and sidewalk improvements around Courthouse Square, the proposed NATO Village. From what we learned last week during our first formal update meeting on NATO Village, due to logistical challenges of the NATO Parliamentary Assembly, our physical office will be closed to staff and the general public **from Tuesday, May 20th through Monday, May 26<sup>th</sup>** (Memorial Day Holiday). Staff will work virtually during this time. We include the holiday because this is the final day of the NATO meetings.



The NATO Village security perimeter will be in place from May 20th to May 27th, with restricted access to the area, limited parking, and expected traffic congestion. The Arts Garage will be limited to parliamentarians and their guests.

We are asking officials when the perimeter will be fully disassembled so that we can resume our in-office schedules on May 27. If they can't ensure opening by 7:00 a.m. on Tuesday, we'll add May 27 to the office closure calendar.

Other necessities still under construction in the office includes:

1. Addressing cool airflow in the east-facing offices
2. Purchasing additional blinds for the interior offices
3. Landlord purchasing replacement blinds in some exterior offices
4. Purchasing shelving for our library
5. Hanging photos throughout our offices
6. Customizing light brightness choices in select offices
7. Purchase and installation of audio video equipment.

While we certainly enjoy the modern look of our new space compared to our former location which was our home for 10 years, the change has been challenging. We remain optimistic that the remaining necessities will be installed and addressed prior to our planned Open House which is currently contemplated for early June.

## MVRPC Releases the Healthy Communities Needs Assessment

MVRPC is pleased to announce the publication of the Healthy Communities Needs Assessment, the sixth project of the PLAN4Health - Miami Valley Initiative. In the spring of 2024, a survey was sent to jurisdictions across the Miami Valley asking questions designed better understand current planning practices, learn about the barriers and opportunities facing communities, and identify resources that are needed to advance planning for healthier communities in the Miami Valley Region. The findings from these survey responses are now available at [Healthy Communities Needs Assessment](https://arcg.is/194mWb) (<https://arcg.is/194mWb>).



MVRPC's PLAN4Health – Miami Valley Initiative was launched in the spring of 2021 to explore how planning can impact health outcomes. This multi-year effort with a focus on projects and programs intended to:

- Promote and advocate for “Health in All Plans and Policies”
- Convene and engage partners to improve conditions known to be key determinants of health
- Advance planning efforts aimed at creating conditions for healthy people and communities

The [Healthy Communities Needs Assessment](https://arcg.is/194mWb) covers four major topic areas related to planning and health: 1) Community Conditions for Health; 2) Active Living Community Assets; 3) Active Living Policies and Strategies; and 4) Planning Capacity and Resources. The information gathered from the survey revealed a number of barriers that are preventing communities from planning for health as effectively as they could be. Conversely, survey responses provided many great insights related to opportunities to break down these barriers.

The information from the [Healthy Communities Needs Assessment](https://arcg.is/194mWb) will be used during the upcoming **The Healthy Communities Planning Toolkit** project.

For additional information regarding PLAN4Health - Miami Valley Initiative and the Healthy Communities Needs Assessment, contact Martin Kim, MVRPC's Director of Community and Regional Planning, at [mkim@mvrpc.org](mailto:mkim@mvrpc.org).

## MVRPC Strengthens Staff Development Through Renewed Partnership with UD Center for Leadership

MVRPC has renewed our commitment to the growth and professional development of staff. MVRPC is pleased to announce the renewal of its partnership with the University of Dayton Center for Leadership (UD Center for Leadership) for professional development programs. The UD Center for Leadership offers 80+ Professional Development programs each year for new and experienced supervisors, managers, and professionals at all levels of the organization looking to sharpen their leadership skills.

High-caliber, subject-matter experts from the Dayton Region and beyond are carefully chosen to present cutting-edge information and provide opportunities for leaders to practice new skills in a workshop format. Participants gain thought-provoking leadership content that can be taken back to the workplace and applied, in order to make an immediate impact.

The partnership provides access to a wide range of curricula designed for working professionals. Additional information about the UD Center for Leadership and program information are accessible [here](#).

## MiamiValleyGovJobs.org MVRPC



MiamiValleyGovJobs.org is a one-stop website for candidates seeking positions with a public agency in the Miami Valley. This service is provided for MVRPC member organizations and partners at no cost. Posting your positions on [MiamiValleyGovJobs.Org](https://MiamiValleyGovJobs.Org) increases visibility of your positions and expands your candidate pool. Each job post will be displayed with your organization's logo and a link to your website where candidates can find more information.

To post a position with your organization, please email your posting to [JobBoard@MVRPC.Org](mailto:JobBoard@MVRPC.Org).

## Grants & Funding Resources

On a monthly basis MVRPC is highlighting funding opportunities for member villages, cities, counties, and townships on our website. We include a description, contact information and program links. We have also listed other valuable resources for finding funding opportunities for our regional jurisdictions and organizations. Explore more on our [Grant and Funding Opportunities page](#).

This month we are featuring information on:

- T- NatureWorks– Deadline: June 2, 2025
- ODOT Township Safety Sign Grant Program– Deadline: June 6, 2025

If you have any questions, please contact Kathryn Youra Polk at [kyourapolk@mvrpc.org](mailto:kyourapolk@mvrpc.org) or 937.223.6323.

## April 2025 MVRPC Meeting Calendar

Please check the agency calendar on [www.mvrpc.org](http://www.mvrpc.org) or contact Savannah Diamond at [sdiamond@mvrpc.org](mailto:sdiamond@mvrpc.org) or 937.223.6323 for the status of your meeting.

Date	Time	Meeting	Staff
4/3/2025	8:30 a.m.	<u>Executive Committee Meeting</u>	<u>S. Diamond</u>
4/3/2025	9:00 a.m.	<u>Board of Directors Meeting</u>	<u>S. Diamond</u>
4/16/2025	2:00 p.m.	<u>Regional Transportation Planning Organization Steering Committee (RTPOSC)</u>	<u>S. Diamond</u>
4/17/2025	9:30 a.m.	<u>Technical Advisory Committee (TAC) Meeting</u>	<u>S. Diamond</u>
4/17/2025	5:00 p.m.	Water Quality Plan Amendment Public Meeting	<u>M. Lindsay</u>
4/23/2025	9:00 a.m.	<u>2025 Miami Valley Climate Planning Seminar</u>	<u>M. Lindsay</u>
4/25/2025	9:30 a.m.	<u>Institute for Livable and Equitable Communities Steering Committee</u>	<u>S. Diamond</u>

\*Meetings are sometimes canceled. Visit [mvrpc.org](http://mvrpc.org) for up-to-date meeting information.

For further details, visit our [website](#) or contact us at 937.223.6323.