



**MIAMI VALLEY**  
Regional Planning Commission

# Sustain Miami Valley

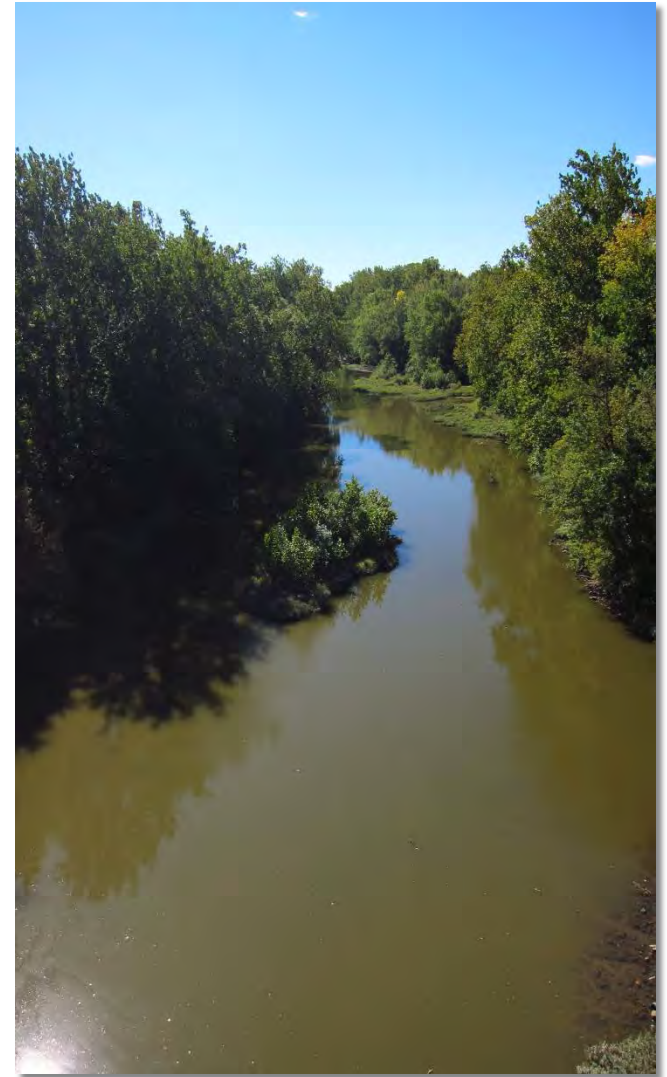
Kim Lahman





# Overview

- Sustainability Defined
- Business Plan Goals
- Plan Elements
- First Steps





# “Sustainability”

# Defining “Sustainability”

- Many definitions exist
- Broad range of topic areas:
  - Carbon emissions and other pollutants
  - Conservation and farmland preservation
  - Urban livability
  - Financial viability



Everything that we need for our survival and well-being depends, either directly or indirectly, on our natural environment.

Sustainability creates and maintains the conditions under which humans and nature can exist in productive harmony, which permits fulfilling the social, economic, and other requirements of present and future generations.



Everything that we need for our **survival and well-being** depends, either directly or indirectly, on our **natural environment**.

Sustainability **creates and maintains** the conditions under which humans and nature can exist in productive **harmony**, which permits fulfilling the **social, economic, and other requirements** of **present and future generations**.





# Business Plan Goals

# Sustain Miami Valley Goals

---

1. Be a catalyst in building a collaborative and cohesive sustainability initiative in the Miami Valley Region





# Sustain Miami Valley Goals

---

2. Engage and empower existing partnerships in developing a regional vision that creates a vibrant, prosperous and healthy region



# Sustain Miami Valley Goals

3. Take the lead in communicating, organizing and maximizing community assets and resources





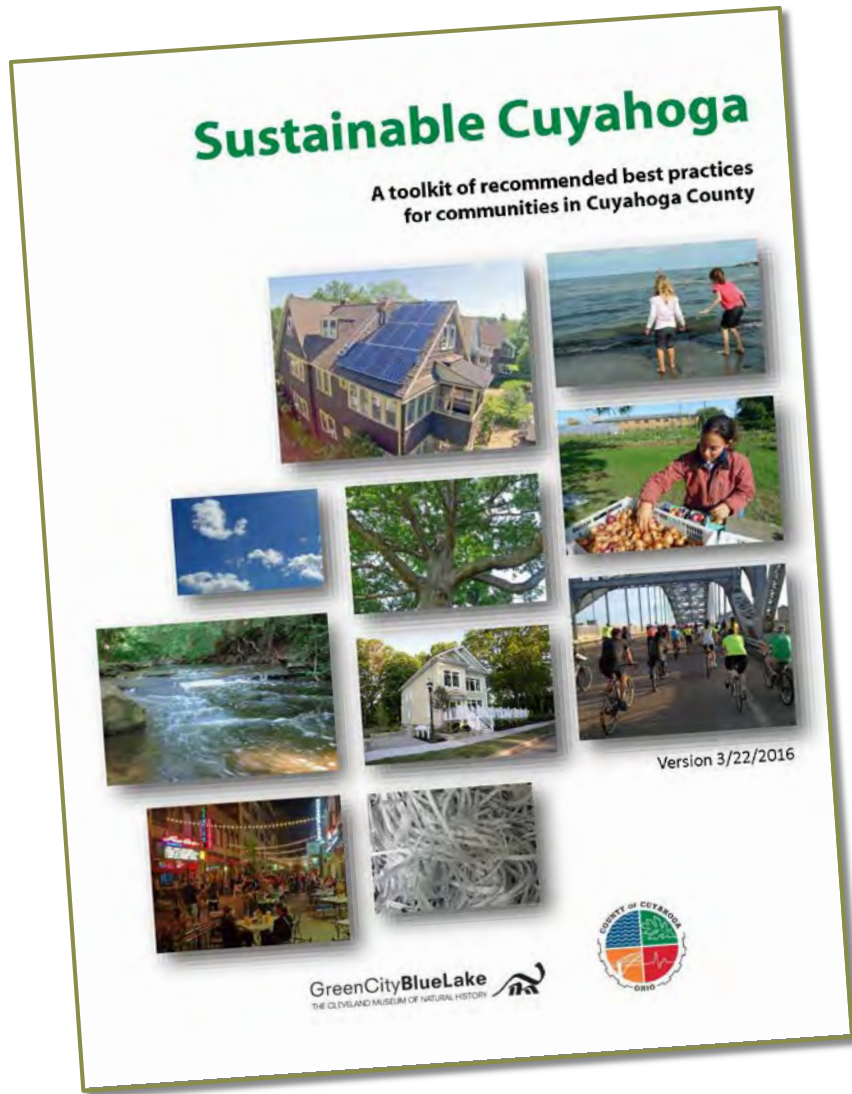
# **Business Plan Elements**

# Elements of Sustain Miami Valley





# First Steps



## *Sustainable Miami Valley Toolkit*

- Recommended Best Practices for member communities
- Print, online and, roadshow versions
- Modeled after a Cuyahoga County project
- Partnering with Dayton Regional Green





# Questions & Comments

**Kim Lahman**

**Director, Sustainable Planning**

**[klahman@mvrpc.org](mailto:klahman@mvrpc.org)**

**937.531.6531**