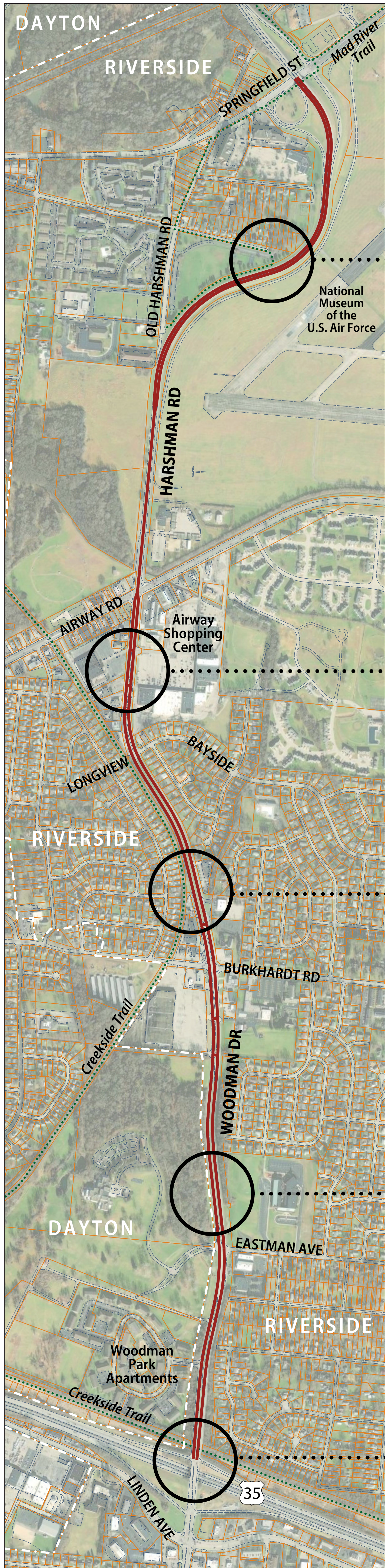
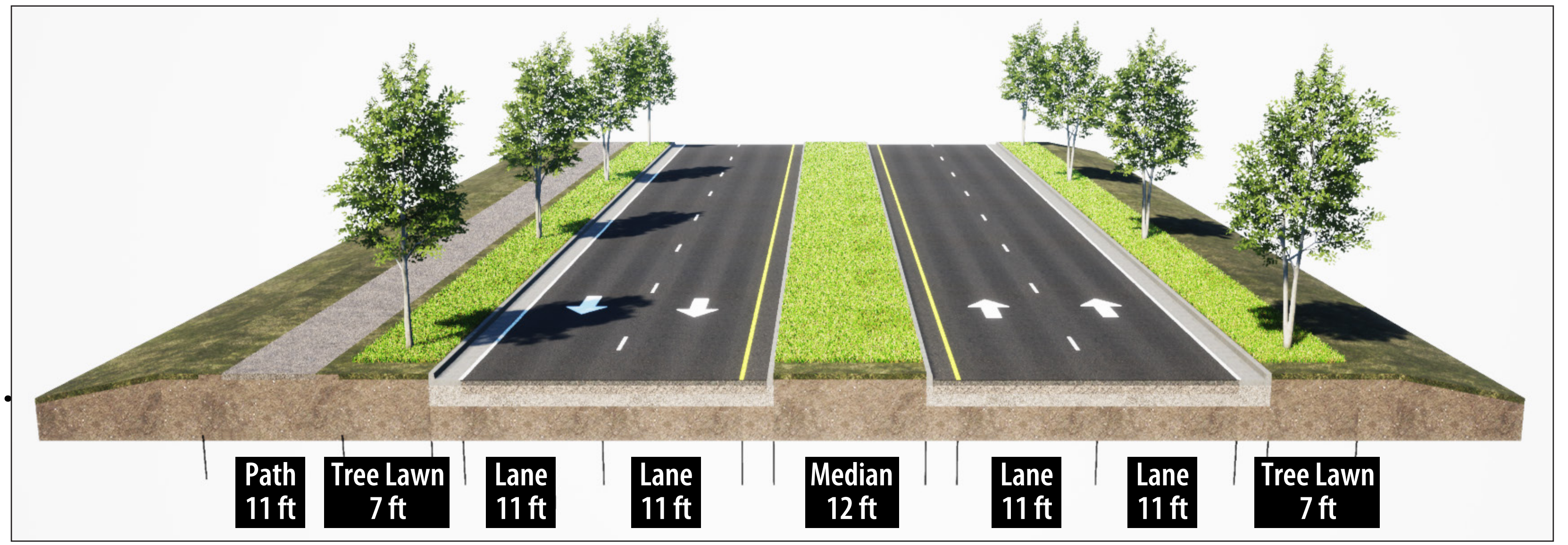


Woodman Corridor Safety Action Plan

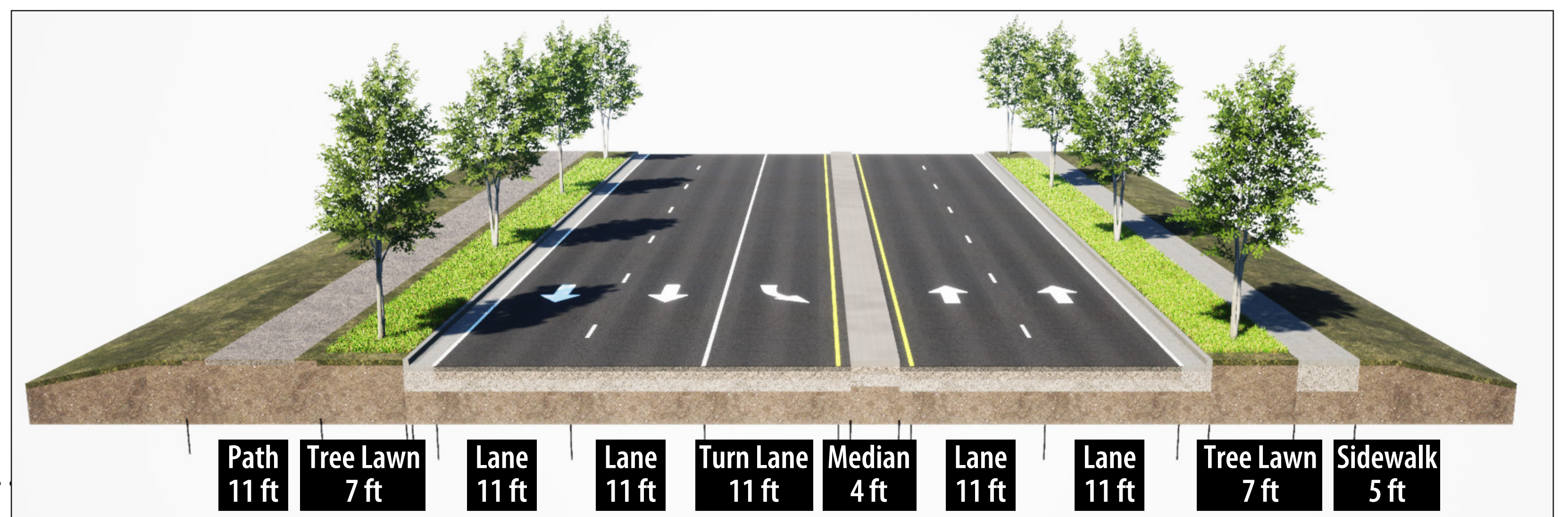
Conceptual Road Sections



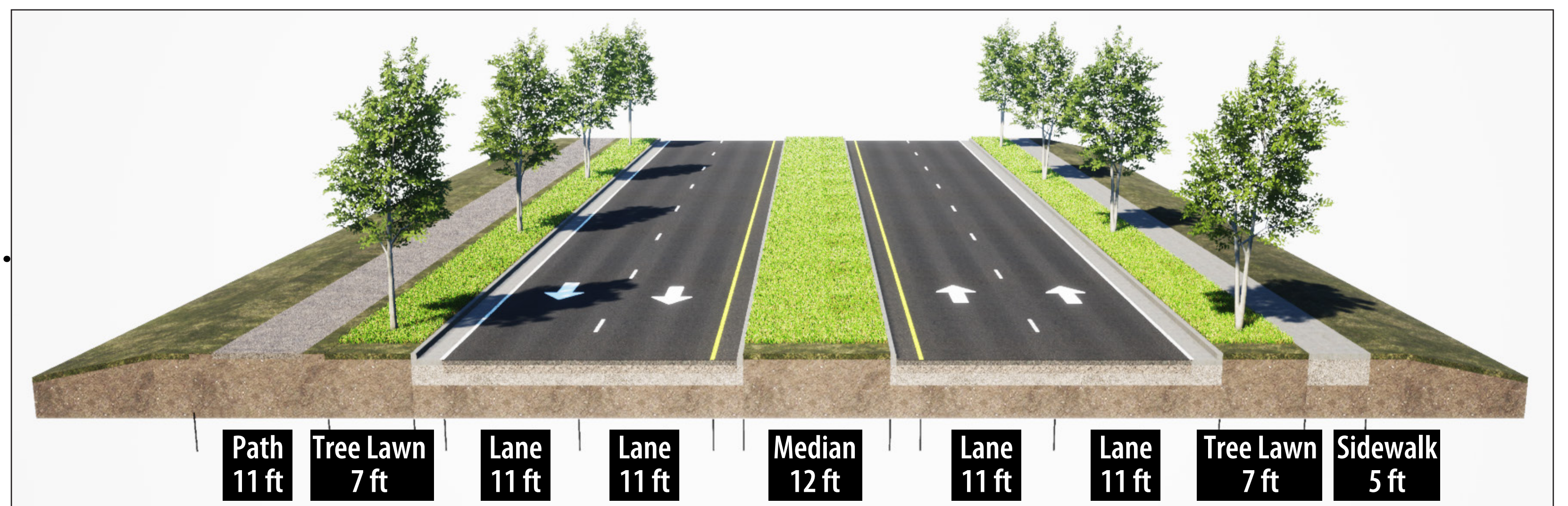
NORTH SECTION



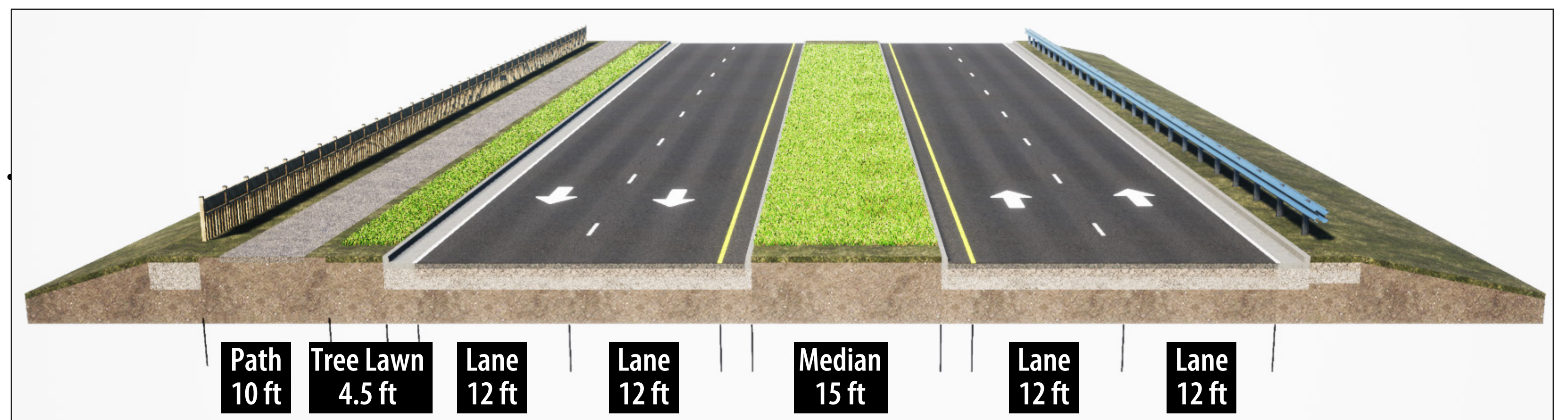
COMMERCIAL AREA



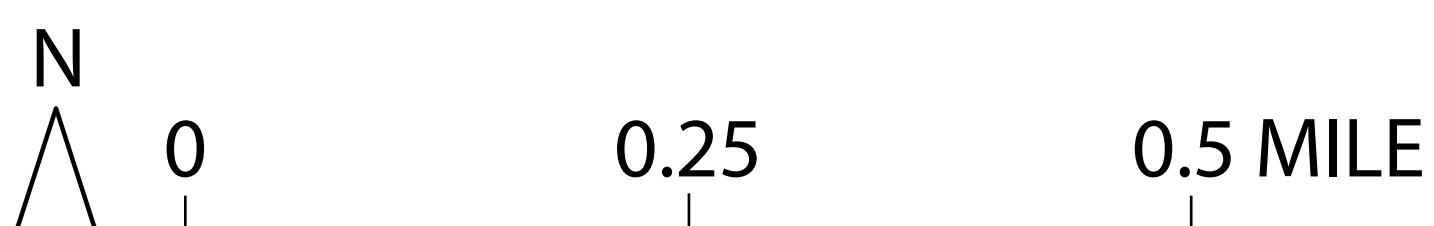
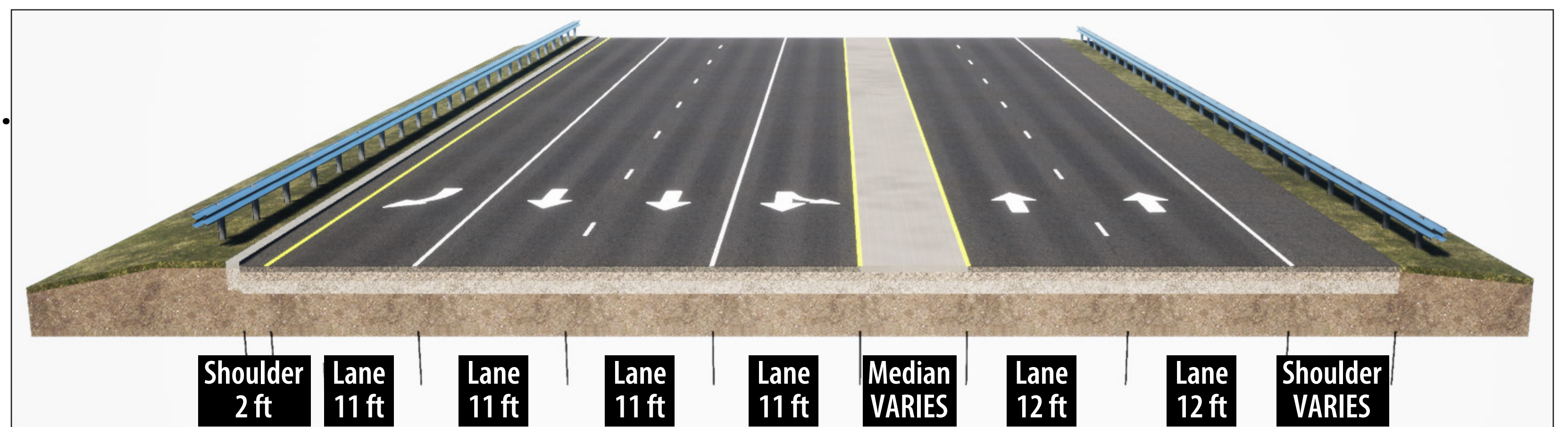
RESIDENTIAL AREA



SOUTH SECTION (Phase 1 Improvements Construction 2024-2026)



US-35 SECTION (Across trail bridge, currently under construction)



Woodman Corridor Safety Action Plan

2020-2022 Crashes



Officer investigating nighttime accident on wet curve.



Debris from accident on curve south of park and across from museum.



September 2022 damage to Air Force Base fence.



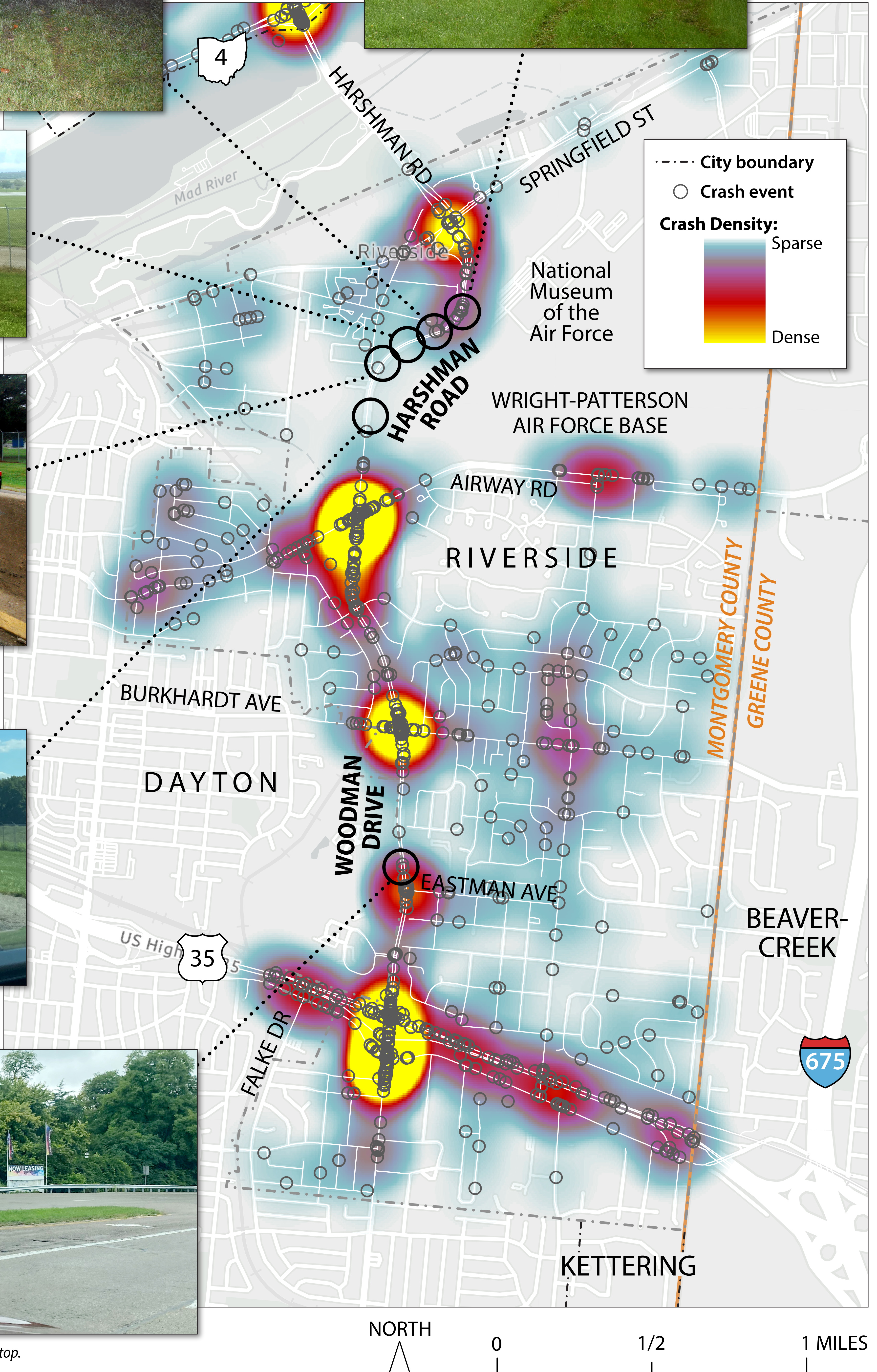
Military vehicle blocks traffic while service personnel view damage to median between Air Force Base and apartment complex.



A minor biking on west side shoulder next to multiple lanes of traffic heading south after curve.



Pedestrian waiting to cross Woodman to bus stop.



CITY OF RIVERSIDE

SAFETY
PATROL
COVERAGE AREA
GEICO



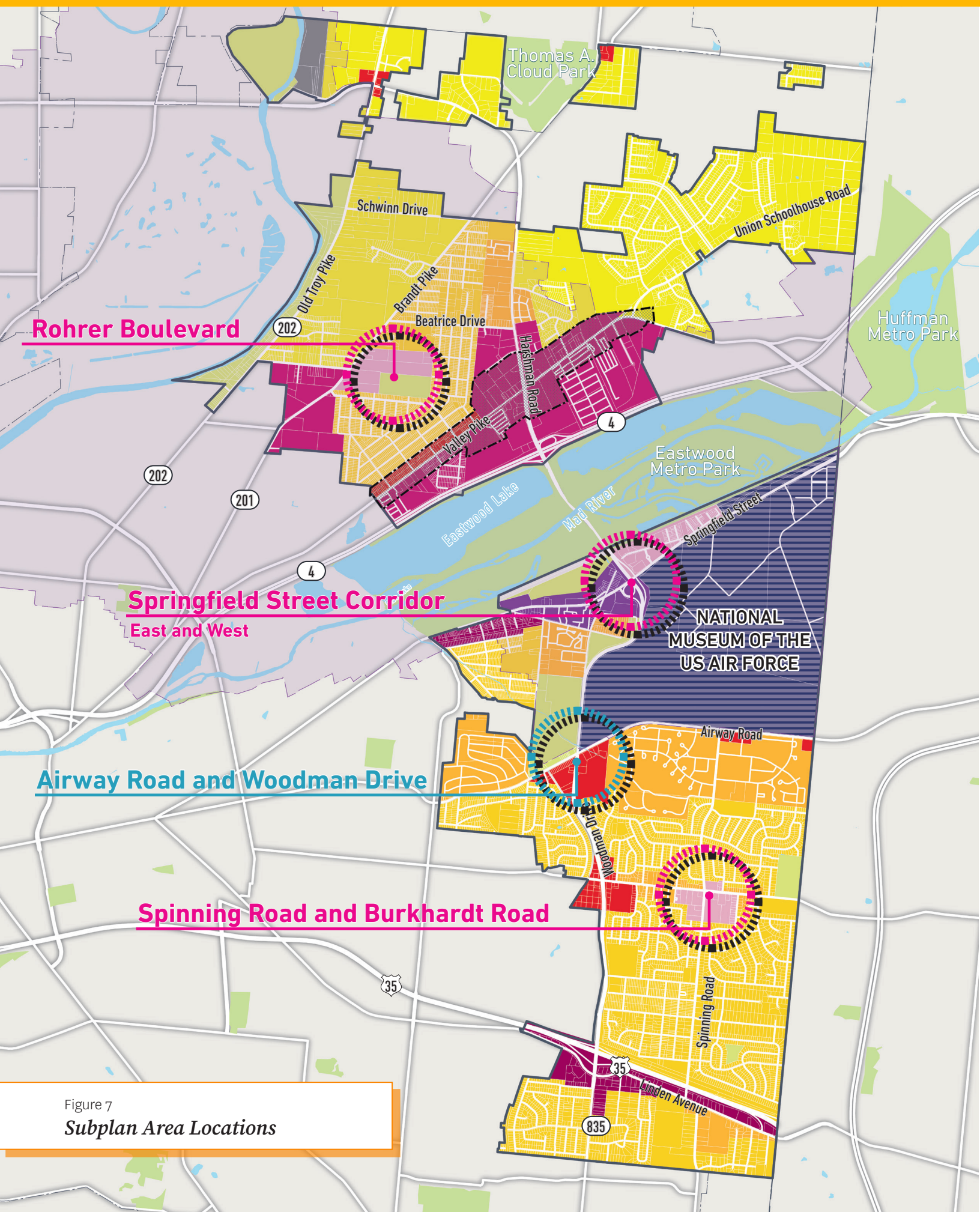


Figure 7
Subplan Area Locations

SUBPLAN AREA DETAIL:

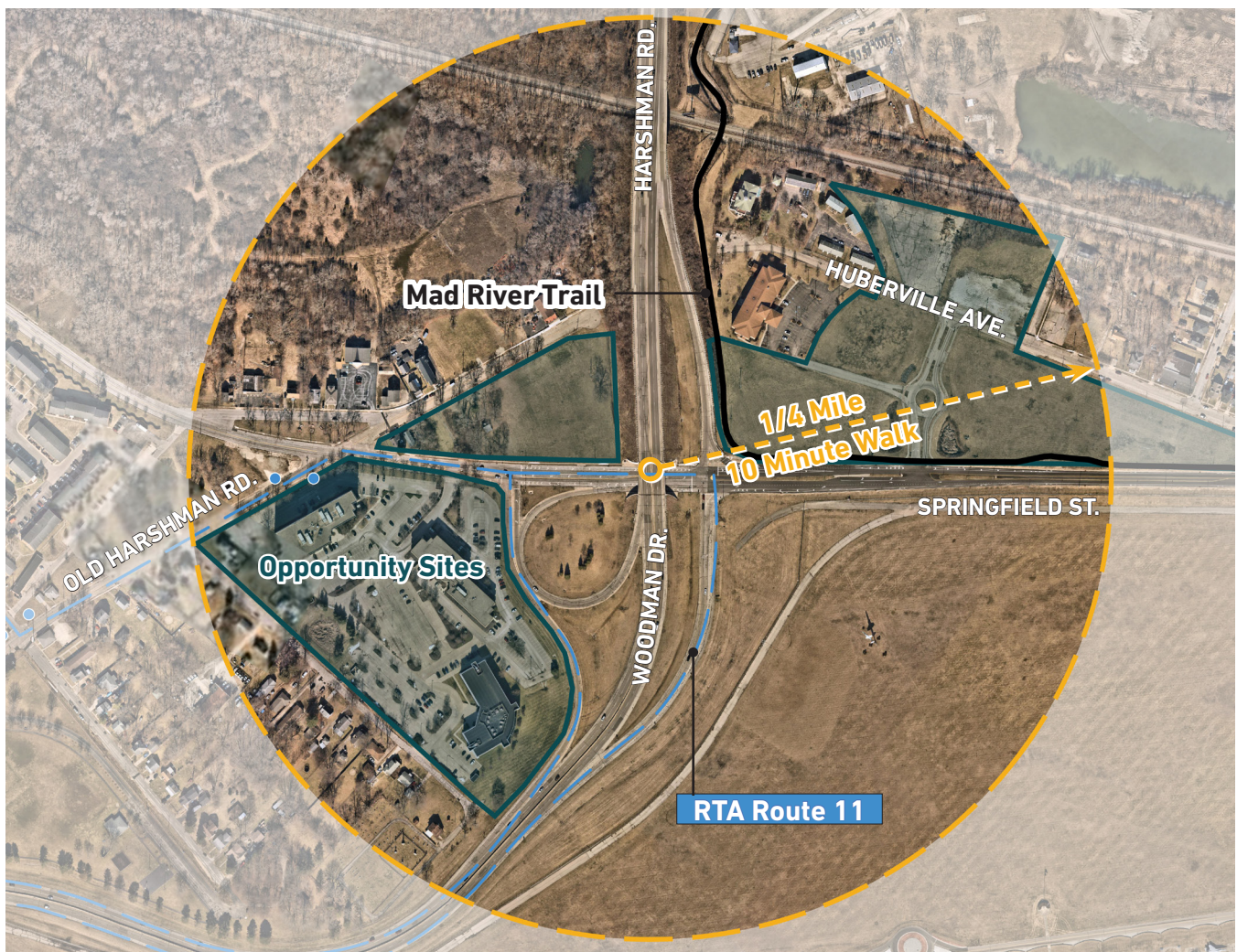
Springfield Street Corridor

A Technology Hub and Gateway to the City of Riverside and the Wright Patterson Air Force Base and Museum.

Adjacent to the intersection of Harshman / Woodman Roads and Springfield Street, extending north towards Huberville Avenue. This area has direct proximity to Wright Patterson Air Force Base (WPAFB) and the National Museum of the United States Air Force. Formerly known as the “Center of Flight,” Riverside began planning for development in this area in 2003, with multiple plan options that included restaurants, retail, high-density offices, a conference center, a hotel, and light

manufacturing for prototype development. Since then, only a hotel has occupied this area due to site contamination and EPA development restrictions implemented in 2005. A few factors constrain the site; one is the existence of a Brownfield in the vicinity of Springfield Street, Huberville Avenue, and Harshman Road. The existing intersection also maintains a partial cloverleaf with several on and off-ramps, including a grade-separated crossing at Springfield Street.

SPRINGFIELD STREET CORRIDOR: OPPORTUNITIES





Opportunities include the City of Riverside’s ownership of over 13 acres of land adjacent to the intersection, including parcels on the Northeast, Northwest, and Southwest corners. The Mad River Recreation Trail passes through the focus area, providing direct access to Eastwood MetroPark and Downtown Dayton. The former vision for the project is a central office, technology hub, and gateway into Riverside that leverages its adjacency to The Wright Patterson Air Force Base District.

The past vision for the area remains an option as part of a proposed City Center project along the Springfield Street Corridor. Reconfiguring the current intersection into a new roundabout creates new development opportunities for this site, linking surrounding neighborhoods and assets. This area has been a prominent feature of Riverside’s plans for economic growth due to its location and land ownership opportunities.

CORRIDOR: **POTENTIAL DEVELOPMENT PROGRAM**

