

Stantec

MIAMI VALLEY REGION AREAWIDE WATER QUALITY MANAGEMENT PLAN

Appendix F 208 Planning References

**Miami Valley Region Areawide Water Quality Management Plan
208 Plan Update Resources**

Year	Date	Title	Author	Keywords	Watershed	County
1969	Jun-69	Geologic Soils (Soils Coverage File)	ODNR	soils	All	Preble
1975	Sep-75	Greene Co. Limitations for Sludge Application (shapefile)	ODNR	land application		Greene
1976	Jun-76	Geologic Soils (Soils Coverage File)	ODNR	soils	All	Montgomery
1978	Jan-78	Geologic Soils (Soils Coverage File)	ODNR	soils	All	Miami
1978	Mar-78	Geologic Soils (Soils Coverage File)	ODNR	soils	All	Greene
1981	Sep-81	Existing and Potential Groundwater Problems in the Miami Valley Region	MVRPC	groundwater, sludge, solid waste		
1982	Jan-82	Improved Site Plan Control of Development Impacts Upon Stream Water Flow and Quality	Greene County and MVRPC	stormwater runoff		Greene
1982	Mar-82	Sewer Extension Impact Report; Montgomery County; Sugar Creek Subdistrict of the Greater Moraine/Beaver Creek Sewer District	Montgomery County and MVRPC			Montgomery
1982	Dec-82	208 Areawide Water Quality Management Plan for the Miami Valley Region: Little Miami River Basin Report	MVRPC	208 Plan	Little Miami	
1982	Dec-82	208 Areawide Water Quality Management Plan for the Miami Valley Region: Lower Great Miami River Basin Report (with corrections as of June 1983)	MVRPC	208 Plan	Lower Great Miami	
1982	Dec-82	208 Areawide Water Quality Management Plan for the Miami Valley Region: Stillwater River Basin Report	MVRPC	208 Plan	Stillwater River	
1982	Dec-82	208 Areawide Water Quality Management Plan for the Miami Valley Region: Twin Creek Basin Report	MVRPC	208 Plan	Twin Creek	
1982	Dec-82	208 Areawide Water Quality Management Plan for the Miami Valley Region: Upper Great Miami River Basin Report	MVRPC	208 Plan	Upper Great Miami	
1982	Dec-82	208 Areawide Water Quality Management Plan for the Miami Valley Region Summary Report	MVRPC	208 Plan	Watershed	County
1982	Dec-82	An Investigation of Groundwater Contamination by Solid Waste at a Disposal Site South of Dayton, Phase 1 of 2	MVRPC	groundwater		Montgomery
1982		Development Regulation Effectiveness in Preventing Urban Non-Point Source Impacts upon the Little Miami River and its Tributaries	Regional Planning and Coordinating Commission of Greene County	non-point source		Greene
1983	Feb-83	An Evaluation of Groundwater Contamination at Disposal Sites South of Dayton, OH Phase II	Wright State, Department of Geology			Montgomery
1983	Oct-83	Designated Management Agencies for the Miami Valley Region	MVRPC	208 Plan		
1983	Nov-83	Alternative Coordinative Management Structures for Water Quality in the Miami Valley Region; Element: O. Management Agencies	MVRPC	organization structure		
1983	Nov-83	A Database Management System for the Water Quality Program in the Miami Valley Region	MVRPC	database		
1983	Dec-83	Factors Potentially Impacting Groundwater Quality of the Great Miami Buried Valley Aquifer in the Miami Valley Region	MVRPC			
1983	Dec-83	Water Quality Management Committee Maintenance; Element: O. Management Agencies	MVRPC	meeting summary		
1983		Great Miami Groundwater Quality Study Interim Report Phase I	Wright State, Department of Geology	groundwater		
1984	Feb-84	A Local Financing Plan for the Miami Valley Regional Water Quality Management Plan; Element o: management agencies	MVRPC	208 Plan, funding		
1984	Apr-84	Summary of Findings and Analysis of the Comprehensive Water Quality Report for the Lower Mainstem of the Great Miami River in relationship to the Lower Great Miami River Basin Report of the AWQMP MVR			Lower Great Miami	
1984	May-84	Onsite Wastewater Treatment and Disposal Systems in Darke County; element d: nps assessment (report on onsite sewage disposal and water quality in Darke Co. and management analysis report)	MVRPC	onsite systems		Darke
1984	Jul-84	Onsite Wastewater Treatment and Disposal Systems in Greene County; element d: nps assessment (Little Miami River Basin Report)	MVRPC	onsite systems	Little Miami	Greene
1984	Jul-84	Onsite Wastewater Treatment and Disposal Systems in Montgomery County; element d: nps assessment (Lower Great Miami River Basin Report)	MVRPC	onsite systems	Lower Great Miami	Montgomery
1984	Jul-84	Onsite Wastewater Treatment and Disposal Systems in Preble County; element d: nps assessment (Twin Creek Basin Report)	MVRPC	onsite systems	Twin Creek	Preble
1984	Jul-84	Onsite Wastewater Treatment and Disposal Systems in Miami County; element d: nps assessment (Upper Great Miami River Basin Report)	MVRPC	onsite systems	Upper Great Miami	Miami
1984	Jul-84	Onsite Wastewater Treatment and Disposal Systems in Miami County; element d: nps assessment (Upper Great Miami River Basin Report)	MVRPC	onsite systems	Upper Great Miami	Miami
1984	Sep-84	Assessment of Industrial Point Source Dischargers in the Miami Valley Region; element i: industrial waste treatment system needs	MVRPC	industrial		
1984	Oct-84	Onsite Wastewater Treatment and Disposal Systems in Darke County; element d: nps assessment (local implementation program for onsite management)	MVRPC	onsite systems		Darke
1984	Nov-84	201/208 Consistency Reviews; element o: review and sign-off letters	MVRPC	208 Plan		
1984	Nov-84	Facility Planning Area Evaluation; Village of New Lebanon (Montgomery County); Element h: municipal wastewater treatment system needs	MVRPC			Montgomery
1984	Nov-84	Memoranda of Understanding - SWCD of the Miami Valley Region and the MVRPC; Element o: management agency	MVRPC	208 Plan, SWCD		
1984	Nov-84	Water Quality Management Committee Maintenance, 1984; element o: management agencies	MVRPC			
1985	Jan-85	An Evaluation of Current and Future Use of Run off Control/Sediment Abatement Legislation for Development Sites as Nonpoint Pollution Control Technology in Miami Valley Region	MVRPC	stormwater runoff		
1985	Mar-85	Village of New Lebanon, Montgomery Co., Wastewater Treatment System Needs, Final Evaluation Report	MVRPC	208 Plan		Montgomery
1985	May-85	Assessing High Risk Areas for Groundwater Contamination from On-site Disposal System Concentrations in Darke and Montgomery Co.; element d: non point source assessment	MVRPC	non-point source		
1985	May-85	Hydrologic (Wetlands Coverage File)	ODNR	wetlands	All	Preble
1985	May-85	Hydrologic (Wetlands Coverage File)	ODNR	wetlands	All	Darke
1985	May-85	Hydrologic (Wetlands Coverage File)	ODNR	wetlands	All	Greene
1985	May-85	Hydrologic (Wetlands Coverage File)	ODNR	wetlands	All	Miami
1985	May-85	Hydrologic (Wetlands Coverage File)	ODNR	wetlands	All	Montgomery
1985	May-85	Assessing High Risk Areas for Groundwater Contamination from On-site Disposal System Concentrations in Darke and Montgomery Co.; element d: non point source assessment	MVRPC	non-point source		Darke, Montgomery
1985	Jul-85	Darke Co. Strategic Plan for Onsite Wastewater Treatment and Disposal Systems	MVRPC	non-point source		Darke
1985	Aug-85	Little Miami River Basin Profile	MVRPC	208 Plan	Little Miami	
1985	Aug-85	Lower Great Miami River Basin Profile	MVRPC	208 Plan	Lower Great Miami	
1985	Aug-85	Stillwater River Basin Profile	MVRPC	208 Plan	Stillwater River	
1985	Aug-85	Twin Creek Basin Profile	MVRPC	208 Plan	Twin Creek	
1985	Aug-85	Upper Great Miami River Basin Profile	MVRPC	208 Plan	Upper Great Miami	
1985	Aug-85	Village of Ansonia, Darke Co., Preliminary Evaluation Report; element h: municipal wastewater treatment system needs	MVRPC	208 Plan		Darke
1985	Sep-85	Memoranda of Understanding - Health Departments of the Miami Valley Region and the MVRPC; Element o: management agency; revised and updated implementation statements	MVRPC	208 Plan, health departments		
1985	Dec-85	Responsiveness Summary for 1985 Public Hearing on Revisions, Studies and Summaries related to the Water Quality Management Plan		groundwater		
1985	Dec-85	Facility Planning Area Evaluation; Village of Ansonia Darke County)	MVRPC	FPA		Darke

**Miami Valley Region Areawide Water Quality Management Plan
208 Plan Update Resources**

Year	Date	Title	Author	Keywords	Watershed	County
1985	Dec-85	Water Quality Management Committee Maintenance, 1984: element o: management agencies, Volume I	MVRPC	208 Plan		
1985	Dec-85	Water Quality Management Committee Maintenance, 1984: element o: management agencies, Volume II	MVRPC	208 Plan		
1985	Dec-85	Areawide Water Quality Management Plan Update Report; element o: management agencies	MVRPC	208 Plan		
1986	Jan-86	The Role of Local Governments in protecting the Great Miami buried Valley Aquifer in the Dayton, OH Metro	MVRPC	groundwater		Montgomery
1986	Aug-86	Roles for Local Government in Ohio's Groundwater Protection Strategy	MVRPC	groundwater		
1986	Nov-86	Areawide Water Quality Management Plan Miami Valley Region - Lower Great Miami Basin Summary and Recommendations; element o: management agencies	MVRPC	208 Plan		
1986	Nov-86	Petition Requesting Sole Source Aquifer Designation for the Class 1 and Class 2 Buried Valley Aquifer System of the Great Miami/Little Miami Basins within the Miami Valley Region of Southwest Ohio	MVRPC	groundwater		
1986	Dec-86	Water Quality Management Structure Support	MVRPC	meeting summary		
1987	Feb-87	Petition Requesting Sole Source Aquifer Designation for Class 1 and Class 2 Buried Valley Aquifer System of the Great Miami/Little Miami Basins	MVRPC	groundwater	Great Miami, Little Miami	
1987	Apr-87	Leaf Disposal Study for Miami Valley Cable Council	MVRPC			
1987	May-87	Animal Feedlot Inventory and Assessment Report for Darke County, OH	MVRPC	CAFO		Darke
1987	May-87	Animal Feedlot Inventory and Assessment Report for Darke County, OH	MVRPC	CAFO		Darke
1987	May-87	Management Options Survey Task C of the Aquifer Protection/Groundwater Management Program Work Plan	MVRPC	groundwater		
1987	Jun-87	Report on Guidelines for the Use, Handling, and Storage of Hazardous Materials associated with Industrial and Commercial Activities	MVRPC			
1987	Jun-87	Potential Pollutant Source Guidelines for Groundwater Protection in Miami Valley Region	MVRPC	groundwater		
1987	Jun-87	Areawide Water Quality Management Plan Little Miami River Basin Summary and Recommendations	MVRPC	208 plan		
1987	Jun-87	Water Quality Management Structure Support; element: communication/management agencies	MVRPC	organization structure		
1987	Jun-87	Model Land Use/Potential Pollutant Source Guidelines Project; Element: Mitigation	MVRPC			
1987	Jul-87	Aquifer Protection/Groundwater Management Program/Field Orientation	MVRPC	groundwater		
1987	Aug-87	Geologic Soils (Soils Coverage File)	ODNR	soils	All	Darke
1987	Nov-87	Petition Requesting Sole Source Aquifer Designation for portions of the Buried Valley Aquifer system of the Great Miami/Little Miami Basins	MVRPC	groundwater		
1987	Nov-87	Appendices				
1988	Jan-88	Areawide Water Quality Management Plan Miami Valley Region - Upper Great Miami Basin Summary and Recommendations; element o: management agencies	MVRPC	208 plan	Upper Great Miami	
1988	Jan-88	Water Quality Management Structure Support; element: communication/management agencies	MVRPC	meeting summary		
1988	Jan-88	Upper Great Miami River Basin Summary and Recommendations; element: mitigation	MVRPC	208 Plan	Upper Great Miami	
1988	May-88	Areawide Water Quality Management Plan Twin Creek Basin Summary and Recommendations	MVRPC	208 Plan	Twin Creek	
1988	May-88	A Groundwater Protection Strategy for the Miami Valley Region	MVRPC	groundwater		
1988	May-88	Twin Creek Basin Summary and Recommendations; element: mitigation (Chapter 9)	MVRPC	208 Plan	Twin Creek	
1988	Jun-88	201/208 Consistency Review; Element: Management Agencies	MVRPC	208 Plan		
1988	Jun-88	Upper Four Mile Creek Watershed Nonpoint Source Pollution Assessment in Preble County				Preble
1988	Jul-88	1987/1988 Plan Update Report and Responsiveness Summary for the 1988 public hearing on Amendments, Revisions and Studies related to Water Quality Management Plans for the Miami Valley Region	MVRPC	208 Plan		
1988	Nov-88	Areawide Water Quality Management Plan Stillwater River Basin Summary and Recommendations; Element: Mitigation	MVRPC	208 plan		
1989	Jun-89	1988 -89 Plan Update Report and Responsiveness Summary for the 1989 Public Hearing on Revisions and Studies Related to the Water Quality Management Plan	MVRPC	208 Plan		
1989	Jun-89	Recommendations Report for a Groundwater Information Management System for Southwestern Ohio	OKI and MVRPC	groundwater		
1989	Jun-89	Handbook of Subbasin Profiles for Nonpoint Source Planning and Management -Little Miami River Basin	MVRPC	non-point source	Little Miami	
1989	Jun-89	Handbook of Subbasin Profiles for Nonpoint Source Planning - Stillwater River Basin	MVRPC	non-point source	Stillwater River	
1989	Jun-89	Handbook of Subbasin Profiles for Nonpoint Source Planning and Management -Stillwater River Basin	MVRPC	non-point source	Stillwater River	
1989	Jun-89	Handbook of Subbasin Profiles for Nonpoint Source Planning and Management -Twin Creek Basin	MVRPC	nonpoint source, surface water	Twin Creek	
1989	Jun-89	Handbook of Subbasin Profiles for Nonpoint Source Planning and Management -Upper Great Miami River Basin	MVRPC	non-point source	Upper Great Miami	
1989	Jun-89	Water Quality Management Structure Support July 2, 1988 - July 1, 1989	MVRPC	208 Plan		
1989	Aug-89	Key Provisions Am. Sub. H.B. 592 Ohio's Comprehensive Solid Wastewater Management and Planning Legislation	MVRPC	solid waste		
1989	Oct-89	201/208 Consistency Reviews; element o:review and sign-off letters	MVRPC	208 Plan		
1989	Nov-89	BV3 Management Unit Plan for Groundwater Protection	Montgomery County Sanitary Engineering	groundwater		Montgomery
1989	Dec-89	Water Quality Management Structure Support July 1, 1989 - December 31, 1989; provision of staff support	MVRPC	208 Plan		
1990	Feb-90	Groundwater Protection Strategy: Volume 8 Regional Summary Including Findings, Conclusions and Recommendations	MVRPC	groundwater	All	
1990	Feb-90	Groundwater Protection Strategy: Volume 5 Little Miami River Basin Management Units BV-6, BV-7, BV-8 and UL-3	MVRPC	groundwater	Little Miami	
1990	Feb-90	Groundwater Protection Strategy: Volume 4 Lower Great Miami River Basin Management Units BV-2, BV-3, BV-4, BV-5 and UL-2	MVRPC	groundwater	Lower Great Miami	
1990	Feb-90	Groundwater Protection Strategy: Volume 7 Stillwater Basin Management Units UL-4	MVRPC	groundwater	Stillwater River	
1990	Feb-90	Groundwater Protection Strategy: Volume 6 Twin Creek Basin Management Units UL-4	MVRPC	groundwater	Twin Creek	
1990	Feb-90	Groundwater Protection Strategy: Volume 3 Upper Great Miami River Basin Management Units BV-1 and UL-1	MVRPC	groundwater	Upper Great Miami	
1990	Feb-90	Groundwater Protection Strategy: Volume 1 Executive Summary	MVRPC	groundwater		
1990	Feb-90	Groundwater Protection Strategy: Volume 2 Regional Framework	MVRPC	groundwater		
1990	Apr-90	Fact Sheet - Miami Valley Groundwater Protection and Management Program	MVRPC	groundwater		
1990	May-90	An Assessment of the Implementation of 250(j) Project Recommendations in the Miami Valley Region; element: mitigation	MVRPC	208 plan		
1990	Jun-90	An Inventory of Municipal, Industrial and Other Point Source Discharges in the Miami Valley Region Lower Great Miami River Basin	MVRPC	Basin plans	Lower Great Miami	
1990	Jun-90	Supplemental Hydrologic Assessment for Sole Source Aquifer Review; Alexandersville - Bellbrook Road Widening and Improvements Project, City of West Carrollton	MVRPC	groundwater		
1990	Jun-90	An Inventory of Municipal, Industrial, and Other Point Source Dischargers in the Miami Valley Region; Little Miami River	MVRPC	point source discharge	Little Miami	
1990	Jun-90	An Inventory of Municipal, Industrial, and Other Point Source Dischargers in the Miami Valley Region; Lower Miami River	MVRPC	point source discharge	Lower Great Miami	
1990	Jun-90	An Inventory of Municipal, Industrial, and Other Point Source Dischargers in the Miami Valley Region; Stillwater River	MVRPC	point source discharge	Stillwater River	
1990	Jun-90	An Inventory of Municipal, Industrial, and Other Point Source Dischargers in the Miami Valley Region; Twin Creek	MVRPC	point source discharge	Twin Creek	
1990	Jun-90	An Inventory of Municipal, Industrial, and Other Point Source Dischargers in the Miami Valley Region; Upper Great Miami River	MVRPC	point source discharge	Upper Great Miami	

**Miami Valley Region Areawide Water Quality Management Plan
208 Plan Update Resources**

Year	Date	Title	Author	Keywords	Watershed	County
1991	Jan-91	City of Dayton Well Field Protection Program; Appendices	MVRPC	groundwater		Montgomery
1991	Jan-91	City of Dayton Well Field Protection Program: Report	MVRPC	groundwater		Montgomery
1991	Apr-91	Annotated Bibliography of Hydrogeology for the Miami Valley Region	MVRPC			
1991	Jun-91	Animal Feedlot and Poultry Operations, Inventory and Assessment Report for Greene County, OH (Little Miami River Basin); Element: Mitigation/Non point source management and control)	MVRPC	non-point source	Little Miami	Greene
1991	Jun-91	Animal Feedlot and Poultry Operations, Inventory and Assessment Report for Montgomery County, OH (Lower Great Miami Basin); Element: Mitigation/Non point source management and control)	MVRPC	non-point source	Lower Great Miami	Montgomery
1991	Jun-91	Animal Feedlot and Poultry Operation Inventory and Assessment for Preble County, OH (Twin Creek); Element: Mitigation (Non-point source)	MVRPC	non-point source	Twin Creek	
1991	Jun-91	Animal Feedlot and Poultry Operations, Inventory and Assessment Report for Preble County, OH (Twin Creek Basin); Element: Mitigation/Non point source management and control)	MVRPC	non-point source	Twin Creek	Preble
1991	Jun-91	Water Quality Management Structure Support (7/1/1990 - 6/30/1991); Element: Communication (Management Agencies)	MVRPC	208 Plan		
1991	Jun-91	Model Regulations for Groundwater Resource Protection Areas; Element: Mitigation (Groundwater)	MVRPC	groundwater		
1991	Jun-91	Sole Source Aquifer Revision Criteria Project Miami Valley Region; Element: Mitigation	MVRPC	groundwater		
1991	Jun-91	Animal Feedlot and Poultry Operation Inventory and Assessment Nonpoint Source Documentation Forms for Greene, Miami, Montgomery and Preble County, OH ; Element: Mitigation/Non point source management and control)	MVRPC	non-point source		Greene, Miami, Montgomery, Preble
1991	Jun-91	Implementation of 205(j) Project Recommendations in the Miami Valley River; Element: Mitigation and Implementation Measures	MVRPC			
1991	Jun-91	Animal Feedlot and Poultry Operation Inventory and Assessment for Miami County; primary water quality planning area; element: mitigation	MVRPC	CAFO		
1991	Aug-91	1990-91 Plan Update Report and Responsiveness Summary for the 1991 Public Hearing on Revisions and Studies Related to the Water Quality Management Plan	MVRPC	208 plan		
1992	Mar-92	City of Bellbrook Well field Protection Program, Component B, Potential Pollutant Source Inventory	MVRPC	groundwater		
1992	Mar-92	City of Bellbrook Well field Protection Program, Component A	MVRPC	groundwater		
1992	Mar-92	Animal Feedlot and Poultry Operation Inventory and Assessment for Darke County; primary water quality planning area: Stillwater River Basin; element: mitigation	MVRPC	CAFO	Stillwater River	
1992	Mar-92	Sole Source Aquifer Revision Assessment (White Paper)	MVRPC	groundwater		
1992	Apr-92	Ground Water Pollution Potential (shapefile data)	ODNR	groundwater	All	Preble
1992	Jun-92	Water Quality Management Structure Support July 1, 1991 - June 30, 1992	MVRPC	208 plan		
1992	Jun-92	201/208 Consistency Reviews; element o:review and sign-off letters; Village of Clifton/Cedarville FPA modification	MVRPC			Greene
1992	Jul-92	1991-92 Plan Update Report and Responsiveness Summary for the 1992 Public Hearing on Revisions and Studies Related to the Water Quality Management Plan	MVRPC	208 Plan		
1992	Oct-92	City of Bellbrook Well field Protection Program, Component C, Potential Pollutant Source Inventory	MVRPC	groundwater		
1992	Dec-92	City of Fairborn Well field Protection Program Component 4 Potential Pollutant Source Inventory; implementation programs for priority groundwater protection areas	MVRPC	groundwater		
1993	Mar-93	City of Fairborn Well field Protection Program Component 4 Potential Pollutant Source Inventory; implementation programs for priority groundwater protection areas	MVRPC	groundwater		
1993	May-93	Stillwater River Watershed Protection Project; Darke and Miami Counties	MVRPC		Stillwater River	Darke, Miami
1993	Jun-93	City of Tripp City, Well Field Protection Program; Component 3 - Protection Area Delineation		groundwater		
1993	Jun-93	Water Quality Management Structure Support July 1, 1992 - June 30, 1993	MVRPC	208 Plan		
1993	Jul-93	City of Dayton Well Field Protection Program; Data Management Project Final Report		groundwater		
1993	Jul-93	1992 - 93 Plan Update Report and Responsiveness Summary for the 1992 Public Hearing on Revisions and Studies Related to the Water Quality Management Plan	MVRPC	208 Plan		
1993	Aug-93	City of Oakwood, Well Field Protection Program; Component 4 - Potential Pollutant Source Inventory		groundwater		
1994	Jan-94	LandUse/LandCover (Shapefile of structures at risk of flooding)	ODNR	flooding, risk	All	Preble
1994	Jan-94	LandUse/LandCover (Shapefile of structures at risk of flooding)	ODNR	flooding, risk	All	Darke
1994	Jan-94	LandUse/LandCover (Shapefile of structures at risk of flooding)	ODNR	flooding, risk	All	Greene
1994	Jan-94	LandUse/LandCover (Shapefile of structures at risk of flooding)	ODNR	flooding, risk	All	Miami
1994	Jan-94	LandUse/LandCover (Shapefile of structures at risk of flooding)	ODNR	flooding, risk	All	Montgomery
1994	Apr-94	City of Xenia, Well Field Protection Program; Component 4 - Potential Pollutant Source Inventory		groundwater		
1994	Apr-94	Revised Model Regulations for Groundwater Resource Protection Areas; Element: Mitigation (Groundwater)	MVRPC	groundwater		
1994	May-94	City of Tripp City Well Field Protection Program Component 4(Potential Pollutant Source Inventory)	MVRPC	non-point source		
1994	Jun-94	City of Eaton - Well Field Protection Program; program design and proposal	MVRPC	groundwater		
1994	Jun-94	Village of Union City, OH Well Field Protection Program Aquifer Characterization and Well Field Protection Area Delineation; Element: Mitigation (Groundwater)	MVRPC	groundwater		
1994	Jun-94	City of Tripp City Well Field Protection Program Component 5(Groundwater Monitoring Plan)	MVRPC	groundwater		
1994	Jun-94	City of Tripp City Well Field Protection Program Component 6(Well Field Pollution Prevention Report)	MVRPC			
1994	Jun-94	Water Quality Management Structure Support July 1, 1993 - June 30, 1994	MVRPC	208 Plan		
1994	Jun-94	City of Tripp City, Well Field Protection Program; Component 5 - Groundwater Monitoring Plan	MVRPC	groundwater		
1994	Jun-94	City of Bellbrook, Well Field Protection Program; adopted well field protection regulation, city of Bellbrook, Sugar Creek Township; well field protection zoning district maps	MVRPC	groundwater		
1994	Jun-94	City of Bellbrook, Well Field Protection Program; protective agreements and regulations	MVRPC	groundwater		
1994	Jun-94	City of Fairborn, Well Field Protection Program; WPAFB memorandum of understanding, Bath Twp and Clark County draft Well Field Protection regulations	MVRPC	groundwater		
1994	Jun-94	City of Tripp City, Well Field Protection Program	MVRPC	groundwater		
1994	Jun-94	City of Xenia, Well Field Protection Program; groundwater resource protection area program	MVRPC	groundwater		
1994	Jun-94	City of Greenville - Well Field Protection Program; program design and proposal	MVRPC	groundwater		
1994	Jun-94	Village of New Lebanon - Well Field Protection Program; program design and proposal	MVRPC	groundwater		
1994	Jun-94	Village of Phillipsburg - Well Field Protection Program; program design and proposal	MVRPC	groundwater		
1994	Jun-94	Village of Germantown - Well Field Protection Program; program design and proposal	MVRPC	groundwater		

**Miami Valley Region Areawide Water Quality Management Plan
208 Plan Update Resources**

Year	Date	Title	Author	Keywords	Watershed	County
1994	Jun-94	Lakengreen Water Authority - Well Field Protection Program; program design and proposal	MVRPC	groundwater		
1994	Jul-94	201/208 Consistency Reviews; element o:review and sign-off letters; City of Tipp City/North Regional WWTP Facility Planning Area modification	MVRPC			
1994	Sep-94	Ground Water Pollution Potential (shapefile data)	ODNR	groundwater	All	Darke
1994	Oct-94	Ground Water Pollution Potential (shapefile data)	ODNR	groundwater	All	Montgomery
1994		Well Field Protection Regulations (Tripp City, Bethel Township, Monroe Township, Miami County)	MVRPC			Miami
1995	Mar-95	City of Oakwood, Well Field Protection Program; Component B - Potential Pollutant Source Inventory	MVRPC			
1995	Mar-95	City of Oakwood, Well Field Protection Program; Component D - Well Field Protection Report	MVRPC			
1995	May-95	Ground Water Pollution Potential (shapefile data)	ODNR	groundwater	All	Greene
1995	Jun-95	Village of Phillipsburg - Well Field Protection Program; Component 1 and 2 (Aquifer Characterization and Well Field Protection Areas Delineation); Element: Mitigation (Groundwater)	MVRPC	groundwater		
1995	Jun-95	City of Xenia Well Field Protection Program; Element: Mitigation (Groundwater)	MVRPC	groundwater		
1995	Jun-95	City of Fairborn Well Field Protection Program (Bath Township, Clark County, Bethel and Mad River Township)	MVRPC	groundwater		
1995	Jun-95	Jefferson Regional Water Authority Well Field Protection Program; Element: Mitigation (Groundwater)				
1995	Jun-95	Water Quality Management Structure Support (7/1/1994 - 6/30/1995); Element: Communication (Management Agencies)	MVRPC			
1995	Jun-95	City of Oakwood, Well Field Protection Program; Element: Mitigation (Groundwater)	MVRPC			
1995	Jun-95	Village of Union City, OH Well Field Protection Program Component 4 (Groundwater Monitoring Plan)	MVRPC	groundwater		
1995	Jun-95	Village of Union City, OH Well Field Protection Program Component 3 (Potential Pollution Source Inventory)	MVRPC	groundwater		
1995	Jul-95	1995 Public Meeting 1994/1995 Plan Update Report and Responsiveness Summary	MVRPC			
1995	Aug-95	The Lakengreen Water Authority Well Field Protection Program Component 3 (Groundwater Monitoring Plan)	MVRPC			Preble
1995	Aug-95	The Lakengreen Water Authority Well Field Protection Program Component 2 (Potential Pollution Source Inventory)	MVRPC			Preble
1995	Oct-95	The Lakengreen Water Authority Well Field Protection Program Component 4 (Management Strategy)	MVRPC			Preble
1995	Oct-95	Ground Water Pollution Potential (shapefile data)	ODNR	groundwater	All	Miami
1995	Nov-95	Village of Phillipsburg - Well Field Protection Program; Component 3 (potential pollution source inventory); Element: Mitigation (Groundwater)	MVRPC	groundwater		
1995	Nov-95	Non point Source Prototype Resource Protection Area Programs	MVRPC	nonpoint source, groundwater		
1996	Jun-96	Status of Miami Valley Regional Planning Commission - Assisted Local Well Field Protection Programs FY 96	MVRPC			
1996	Jun-96	Miami Valley Groundwater Protection Strategy Database Design Summary and GIS Update	MVRPC			
1996	Jun-96	Miami Valley Groundwater Protection Strategy and Planning Assessment	MVRPC			
1996	Jun-96	Action Plan for the Lower Great Miami Watershed Enhancement Program	MVRPC		Lower Great Miami	
1997	Jun-97	Water Quality Planning GIS Database Development Program (Phase 2); Part A - text and appendix	MVRPC			
1997	Jun-97	Water Quality Planning GIS Database Development Program; Part B map booklet	MVRPC			
1997	Jun-97	MVRPC Assisted Local Well Field Protection Programs, SFY-97 Updates, implementation programs, year 6	MVRPC	groundwater		
1997	Jun-97	Water Quality Management Structure Support July 1, 1996 - June 30, 1997	MVRPC			
1997	Dec-97	Miami Valley Wetlands Inventory	MVRPC			
1997		Action Plan for the Lower Great Miami Watershed Enhancement Program	MVRPC		Lower Great Miami	
1998	May-98	Federal Grant Application - Enhancement of Environmental Communication in the Lower Great Miami River Basin - a Pilot Demonstration	MVRPC		Lower Great Miami	
1998	Jun-98	Animal Feedlot and Poultry Operation Inventory and Assessment Darke County, Stillwater River Basin	MVRPC		Stillwater	Darke
1998	Jun-98	Water Quality Planning GIS Database Development Program (Phase 3); Part A - text and appendix	MVRPC			
1998	Jun-98	Water Quality Planning GIS Database Development Program; Part B map booklet	MVRPC			
1998	Jun-98	Water Quality Management Structure Support July 1, 1997 - June 30, 1998	MVRPC			
1998	Dec-98	Lower Great Miami Watershed Enhancement Program, 1998 Action Plan				
1998		Action Plan for the Lower Great Miami Watershed Enhancement Program	MVRPC		Lower Great Miami	
1999	Jun-99	Water Quality Management Structure Support July 1, 1998 - June 30, 1999	MVRPC			
1999	Jun-99	Animal Feedlot and Poultry Operation Inventory and Assessment for Miami County; primary water quality planning area; element: mitigation		CAFO		
1999	Dec-99	Lower Great Miami Watershed Enhancement Program, 1999 Action Plan			Lower Great Miami	
1999		Action Plan for the Lower Great Miami Watershed Enhancement Program	MVRPC		Lower Great Miami	
2000	Apr-00	Water Resources Inventory of the Honey Creek/Great Miami River Watershed	MVRPC			
2000	Jun-00	Water Quality Management Structure Support July 1, 1999 - June 30, 2000; provision of staff support	MVRPC	208 Plan		
2001	Jun-01	Basin Council Activity Materials FY2001; Element: Communication (Management Agencies)	MVRPC			
2001		Action Plan for the Lower Great Miami Watershed Enhancement Program	MVRPC		Lower Great Miami	
2002	Jan-02	Basin Council Activity Materials FY2001; Element: Communication (Management Agencies)	Darke County SWCD	livestock inventory - GIS	Stillwater	Darke
2002	Apr-02	Water Resources Inventory of the Honey Creek/Great Miami River Watershed	MVRPC			
2002	Apr-02	Total Maximum Daily Loads for the Upper Little Miami River	Ohio EPA	TMDL	Little Miami	Montgomery, Greene
2002	Jun-02	Basin Council Activity Materials FY2001; Element: Communication (Management Agencies)	MVRPC			
2002	Jul-02	Watershed Action Plan for the Upper Half of Rattlesnake Creek	Paint Creek Watershed Project	watershed, action plan	Little Miami	Greene
2002	Jul-02	Paint Creek Watershed Management Plan	Paint Creek Watershed Project	watershed, action plan	Little Miami	Greene
2002		Action Plan for the Lower Great Miami Watershed Enhancement Program	MVRPC		Lower Great Miami	
2003	Mar-03	Population Projections: State and County Totals: 2005 - 2030 (PDF)	Ohio Dept. of Development	population	All	All
2003	Mar-03	Projected Migration by Age and Sex, Ohio and Counties: 2005 - 2030 (excel)	Ohio Dept. of Development	population	All	All
2003	Jun-03	Basin Council Activity Materials FY2001; Element: Communication (Management Agencies)	MVRPC			
2003	Nov-03	Livestock and Poultry Operation inventory and Assessment for Darke County, OH	MVRPC			
2003	Dec-03	Livestock and Poultry Operation inventory and Assessment for Miami County, OH	MVRPC			Miami
2004	May-04	Areawide Water Quality Management Structure Policy	MVRPC			
2004	Jun-04	Basin Council Activity Materials FY2001; Element: Communication (Management Agencies)	MVRPC			
2004	Nov-04	Household Sewage Treatment System Plan (Darke County)	Darke County General Health District	HSTS	Stillwater, Twin Creek	Darke
2005	Jul-05	Annual Report for SFY 2005 604(b) Contract between MVRPC and OEPA	MVRPC			

**Miami Valley Region Areawide Water Quality Management Plan
208 Plan Update Resources**

Year	Date	Title	Author	Keywords	Watershed	County
2005	Sep-05	Areawide Wastewater Facility Planning Policies	MVRPC			
2006	Nov-06	Greene County Wastewater Treatment Facility Planning Area Updates	MVRPC	FPA	Little Miami	Greene
2006	Dec-06	State Water Quality Management Plan Appendix 10-3: Extracted Content for MVRPC in Attachment C from the 1993 State WQM Plan Certification				
2007	Jan-07	Priority and Implementation Program Process	Ohio EPA	208 Plan	all	all
2007	Jan-07	Biological and Water Quality Study of Twin Creek and Select Tributaries	Ohio EPA	TMDL	Twin Creek	Preble
2007	Jan-07	MVRPC AWQMP Proposed 2007 Amendment	MVRPC	208 Plan		
2007	Apr-07	Policy 2007-01: Water Quality Credit Trading Plans	MVRPC	water quality trading	all	All
2007	Jul-07	Home Sewage Treatment Rules, Darke County General Health District, Chapter 3701-29-01 to 3701-29-19, Effective July 10, 2007	Darke County General Health District			
2007	Jul-07	Household Sewage Treatment and Small Flow On-Site Sewage Treatment Systems, Greene County Combined Health District	Greene County Combined Health District			
2007	Jul-07	Sewage Treatment System Rules, Regulation 550 of the Montgomery County Sanitary Regulations, Adopted July 18, 2007	Public Health - Dayton & Montgomery County			Montgomery
2007	Sep-07	Landmarks - Business/facility locations based off of LBRS data	OGRIP			Greene
2007	Oct-07	Honey Creek/Great Miami Watershed Action Plan and Inventory	Honey Creek Watershed Association	watershed, action plan	Great Miami	Miami, Montgomery
2007		School District Boundaries	Ohio Metadata Explorer	schools	All	All
2008	Jan-08	Report to the Household Sewage and Small Flow On-Site Sewage Treatment System Study Commission	Ohio Dept of Health	HSTS	All	All
2008	Jan-08	MVRPC AWQMP Proposed 2008 Amendment	MVRPC	208 Plan		
2008	May-08	Interim Onsite Sewage Treatment Systems Permit to Install Guidance	Ohio EPA	onsite systems	all	All
2008	Jun-08	Survey of Household Sewage Treatment Systems Operation and Failure Rates in Ohio	Ohio Dept of Health	HSTS	All	All
2008	Jun-08	Landmarks - Business/facility locations based off of LBRS data	OGRIP			Preble
2008	Oct-08	Landmarks - Business/facility locations based off of LBRS data	OGRIP			Miami
2009	Jan-09	Landmarks - Business/facility locations based off of LBRS data	OGRIP			Darke
2009	Jun-09	Going Places: An Integrated Land Use Vision for the Miami Valley Region, Phase I Report	MVRPC	land use	all	all
2009	Aug-09	Total Maximum Daily Loads for the Stillwater River Watershed	Ohio EPA	TMDL	Stillwater	Darke, Miami, Montgomery
2009	Aug-09	Household Sewage Disposal Regulations, Miami County Health District, Amended August 27, 2009	Miami County Health District			
2009	Dec-09	Total Maximum Daily Loads for the Mad River	Ohio EPA	TMDL		Miami, Montgomery, Greene
2009	Dec-09	Grand Lake St. Marys/Wabash River Watershed Action Plan	Grand Lake/Wabash Watershed Alliance	watershed, action plan		
2010	Jan-10	Total Maximum Daily Loads for the Twin Creek Watershed	Ohio EPA	TMDL	Twin Creek	Preble, Darke, Montgomery
2010	Feb-10	Facility Sites (shapefile with data that the EPA collections about facilities or sites subject to environmental regulations)	Ohio EPA		All	All
2010	Apr-10	Updated Twin Creek Watershed Action Plan	Miami University Institute of Environmental Sciences	watershed, action plan	Twin Creek	Preble
2010	Jul-10	septic shapefile	Darke County	septic system inventory - GIS	Stillwater	Darke
2010		Soils (shapefile data)	USDA NRCS	soils	all	All
?	?	Groundwater: Your Water At Risk (Presenter Package)	MVRPC	groundwater		
1987-1992		Sole Source Aquifer (shapefile of the Greater Miami SSA)	Ohio EPA			
		Ohio Administrative Code 3745-1-21 Great Miami river drainage basin				
		Ohio Administrative Code 3745-1-18 Little Miami river drainage basin				

Stantec

MIAMI VALLEY REGION AREAWIDE WATER QUALITY MANAGEMENT PLAN

Appendix G MVRPC Policy 2007-01: Water Quality Trading Plans



One Dayton Centre
One South Main Street
Suite 260
Dayton, OH 45402
Tel: (937)223-6323
Fax: (937)223-9750
TTY/TDD 800-759-0750
www.mvrpc.org

Memorandum

May 31, 2007

To: MVRPC Board of Directors
From: MVRPC Staff
Subject: Proposed updates to the MVRPC Areawide Water Quality Management Plan

Four proposed changes to the Areawide Water Quality Management Plan are grouped here and collectively titled the "2007 Amendment." These proposals include a new additional policy, two minor wastewater facility planning area (FPA) boundary changes in Montgomery County and a major FPA boundary update for all of Greene County.

Attached to this memo are short amendment description sheets and supporting documentation or maps. Full text of the Greene County FPA Update will be distributed in hardcopy at the MVRPC Board of Directors meeting, or can be downloaded from the MVRPC web site at this location:

<http://www.mvrpc.org/wq/greFPAUpdate.php>

BACKGROUND

MVRPC is the designated water quality planning agency for five counties: Darke, Greene, Miami, Montgomery and Preble. As such, MVRPC maintains an Areawide Water Quality Management Plan covering topics such as point discharges, non-point source pollution, and water quality monitoring. Planning for many of these functions has migrated to the Ohio EPA over the years but among the areas that remain is **Wastewater Treatment Facility Planning Areas**. The individual amendments presented today are all related to wastewater treatment planning or wastewater treatment planning areas.

Facility Planning Areas are territories for which an identified management agency has been identified for wastewater treatment planning responsibility. Management Agencies are typically Municipalities, but can include Counties or regional authorities empowered to provide wastewater treatment services.

MVRPC maintains the map of all Facility Planning Areas in the five-county area. These maps are to be used by Ohio EPA in determining where permits to install for new sewer lines may and may not be issued. They also inform the NPDES permit process for the wastewater treatment facilities themselves.

RECOMMENDATION

Staff recommends adoption of the 2007 Amendment to the Areawide Water Quality Management Plan to the MVRPC Board of Directors.

**Miami Valley Regional Planning Commission
Areawide Water Quality Management Plan
Proposed Amendment**

Date received: January 2007

Amendment Applicant: MVRPC

Amendment Title: Water Quality Credit Trading Policy

Amendment Description: Policy Update. The Ohio EPA finalized rules for establishing and operating water quality credit trading plans and programs, and their incorporation into the terms of NPDES permits for point sources. One element of these rules requires that such credit trading programs may not be in conflict with the Areawide Water Quality Management Plan for the subject area. The purpose of the attached policy is to clarify the position of the AWQMP regarding water quality credit trading plans and programs.

Staff Comments:

- The pilot credit trading program established by the Miami Conservancy District was not established under the Ohio EPA rules. This policy would recognize the MCD program and confirm that the MCD program does not conflict with the AWQMP. MVRPC would have no role in the ongoing management or development of the MCD program, nor would it monitor or report on its accomplishments. Such monitoring would be for water quality credit trading programs established under the Ohio EPA rules.

Committee History:

- The Areawide Facility Planning Subcommittee reviewed this proposal on April 25, 2007. The Miami Conservancy District commented that the pilot water quality credit trading program MCD is currently operating is exempt from Ohio EPA rules for a period of ten years. It was further noted that the rules allow point sources to purchase credits for non-point source reductions downstream of the discharge point. This rule makes recommendation #2 in the policy unnecessary.

Staff Recommendation: Recommendation #2 within the policy document was removed per the comment from the AFPSC. Staff recommends this policy update be approved and incorporated into the AWQMP.

PROPOSED

Miami Valley Regional Planning Commission Areawide Water Quality Management Plan

Policy 2007-01: Water Quality Credit Trading Plans

Purpose

This water quality management policy is intended to describe the position of the Areawide Water Quality Management Plan regarding the use of Water Quality Credit Trading Management Plans to achieve water quality goals within the MVRPC five-county areawide water quality planning region. This policy responds to potential concerns regarding conflicts with 208 Plans as described in the Water Quality Credit Trading rules at OAC Chapter 3745-5-03(A)(5).

Water Quality Credit Trading Activities

MVRPC concurs with the conclusions of the Ohio EPA regarding the benefits of water quality credit trading programs. MVRPC finds that credit trading programs have real potential to achieve reductions in pollutant loadings in surface waters at costs (per pound of pollutant) substantially below costs associated with additional technology controls at municipal point sources. Therefore, MVRPC encourages wastewater treatment management agencies to explore opportunities to partner with entities interested in developing water quality credit-generating projects as part of an overall NPDES permit compliance strategy. Nothing in the MVRPC Areawide Water Quality Management Plan should be construed to prohibit or discourage the development of or participation in a Water Quality Credit Trading Management Plan as described under OAC Chapter 3745-5.

Water Quality Credit Trading Management Plans

All currently and any future water quality credit trading management (WQCTM) plans approved by Ohio EPA and involving municipal/public point sources within the MVRPC areawide water quality planning region are hereby recognized by, and incorporated into, the AWQMP. MVRPC will monitor annually:

- the number of WQCTM Plans in place within its designation counties;
- the number of new WQCTM Plans approved during the past year; and
- the number of municipal point sources participating in WQCTM Plans during the past year.

MVRPC recognizes that watershed boundaries extend beyond the five counties for which it has planning responsibility. Municipal wastewater treatment management agencies in the MVRPC areawide water quality planning region may participate in WQCTM Plans involving point sources and/or water quality credit-generating activities which are located outside of the MVRPC areawide water quality planning designation.

Regional Coordination

This policy includes the following suggestion for regional coordination of Water Quality Credit Trading Management (WQCTM) Plans. It is preferred that WQCTM Plans be established on a watershed basis with as broad a rate of participation by eligible point sources as possible, rather than facility-by-facility. MVRPC may provide, upon request, assistance in coordination of the municipal point source management agencies involved in the development of a watershed-based WQCTM Plan.

PROPOSED

**A RESOLUTION
TO ADOPT THE 2007 AMENDMENT TO THE AREAWIDE WATER QUALITY
MANAGEMENT PLAN FOR THE MIAMI VALLEY REGION**

WHEREAS, the Miami Valley Regional Planning Commission is the Designated Planning Agency (DPA) for Water Quality Management Planning within the Miami Valley Region pursuant to Section 208 of the Federal Water Pollution Control Act Amendments of 1972 (P.L. 92-500) and 1977 (P.L. 95-217); and

WHEREAS, in fulfillment of its responsibilities as the DPA, MVRPC has prepared the 208 Areawide Water Quality Management Plan, and administers said Plan within its designated five-county water planning jurisdiction, including Greene, Montgomery, Miami Preble and Darke Counties, Ohio; and

WHEREAS, it is periodically necessary to amend said Plan to incorporate pertinent and appropriate modifications; and

WHEREAS, the following individual amendments, collectively known as the 2007 Amendment, have been proposed for the Areawide Water Quality Management Plan:

1. Addition of a Water Quality Credit Trading Policy
2. Minor boundary updates related to OKI Amendment #30 in southern Montgomery County
3. Minor boundary update between Dayton and Beavercreek in Montgomery County
4. Major update to all Greene County Facility Planning Areas.

NOW, THEREFORE, BE IT RESOLVED that the Board of Trustees of the Miami Valley Regional Planning Commission hereby adopts the above-referenced 2007 Amendment to the Areawide Water Quality Management Plan and recommends its certification by the State of Ohio.

Donald R. Spang
Executive Director

Robert J. Shook, Chair

June 7, 2007

MIAMI VALLEY REGIONAL
PLANNING COMMISSION

Stantec

MIAMI VALLEY REGION AREAWIDE WATER QUALITY MANAGEMENT PLAN

**Appendix H MVRPC Policy: Areawide Facility Planning
Subcommittee**



Miami Valley Regional Planning Commission

**AREAWIDE
WATER QUALITY MANAGEMENT STRUCTURE
POLICY**

**Adopted by MVRPC Board
May 21, 2004**

**One Dayton Centre
One South Main Street
Suite 260
Dayton, Ohio 45402
Telephone: (937) 223-6323
Fax: (937) 223-9750**

MVRPC
AREAWIDE
WATER QUALITY MANAGEMENT STRUCTURE
POLICY

Purpose

In keeping with the Miami Valley Regional Planning Commission's role as Designated Water Quality Planning Agency in its five-county Region, the purpose of the Areawide Water Quality Management Structure is to provide a mechanism through which all local governments, agencies, organizations, and individuals in the Region can offer input to MVRPC's Areawide Water Quality Management Plan (AWQMP), collectively address pertinent water resource issues, and coordinate their respective activities in order to further the Region's water quality goals.

Committee Structure

The Committees composing the Management Structure shall serve as forums for input, education, and guidance on water resource issues within MVRPC's five basin planning areas: Upper Great Miami; Lower Great Miami; Little Miami; Stillwater; and Twin Creek. The basin-regional management structure shall consist of the following:

- The Miami Valley Regional Planning Commission (MVRPC) Board of Directors;
- The Great Miami Watershed Network;
- The Little Miami Basin Council; and
- The Areawide Facility Planning Subcommittee (AFPSC);

Miami Valley Regional Planning Commission Board of Directors

The MVRPC Board of Directors shall:

- Have the power to adopt the Areawide Water Quality Management (AWQM) Plan and amendments thereto;
- Have the power of approval over facilities plans and other Federally- and/or State-funded implementation plans in relationship to the AWQM Plan and amendments thereto; and
- Assist MVRPC staff in establishing Areawide Water Quality Management Planning review and approval policies.

Great Miami Watershed Network and Little Miami Basin Council

The Great Miami Watershed Network and Little Miami Basin Council shall serve as forums for identifying, prioritizing, and addressing water quality issues of local and regional concern, coordinating water quality management activities within their respective watersheds, and communicating concerns to MVRPC. The Great Miami Watershed Network will be jointly coordinated by Miami Conservancy District and MVRPC. The Little Miami Basin Council will be coordinated by MVRPC.

Participation / Representation

The MCD/MVRPC Great Miami Watershed Network will seek participation from relevant local governments, agencies, organizations, and individuals throughout the entire Great Miami watershed, including MVRPC's Twin Creek, Stillwater, Upper Great and Lower Great Miami basin planning areas. The Little Miami Basin Council shall seek participation relevant local governments, agencies, organizations, and individuals in the Little Miami River basin planning area of the MVRPC Region.

Meetings

The meeting schedules of the Great Miami Watershed Network and the Little Miami Basin Council shall be determined by the participants and the staffs of the Miami Conservancy District and Miami Valley Regional Planning Commission, as appropriate.

Areawide Facility Planning Subcommittee

The Areawide Facility Planning Subcommittee (AFPSC) will serve to offer on-going guidance and input on the wastewater treatment facility planning aspects of MVRPC's 208 Areawide Water Quality Management Plan. It shall serve as MVRPC's primary mechanism for reviewing and gathering input on Facility Plans and Facility Planning Area update proposals. Input gathered will be forwarded to the MVRPC Technical Advisory Committee for its information and any additional input and finally to the MVRPC Board for final review and action.

The AFPSC will have the following responsibilities:

- Assist MVRPC in establishing Facility Plan/Planning Area Update review and approval criteria; and
- Review and offer input on Facility Plan/Planning Area Update proposals.

Participation / Representation

Membership on the AFPSC shall consist of the combined participants of the Great Miami Network located within MVRPC's water quality planning area (Darke, Miami, Montgomery and Preble Counties) and the Little Miami Basin Council (Greene County) that also represent interests from within MVRPC's five-county Region. These participants represent a wide spectrum of water-quality interests, including, but not limited to, local jurisdictions, wastewater treatment providers, watershed protection programs, Soil and Water Conservations Districts, and Health Districts.

Officers

The officers of the AFPSC shall consist of a chair and a vice-chair. The chair and vice-chair will be selected by the members of the Subcommittee. Officers will be elected or re-elected annually.

Meetings

The AFPSC meetings shall be scheduled as often as deemed necessary by MVRPC when relevant issues arise. Whenever possible meetings will be planned to coincide with regular meetings times (either before or after) of the Great Miami Network in order to maximize participation. Prior written and/or electronic notice of all meetings of the AFPSC will be transmitted to all potential participants.


Stantec

MIAMI VALLEY REGION AREAWIDE WATER QUALITY MANAGEMENT PLAN


**Appendix I 208 Plan Update Project Kick-Off Meeting
Presentation and Summary**

AREAWIDE WATER QUALITY MANAGEMENT PLAN

Presenter Jim Rozelle
Date March 9, 2010




One Team. Infinite Solutions




Stantec Consulting

- Stantec is a 10,000 person firm
- 130 Offices
- Headquartered in Edmonton
- Offices in Dayton, Cincinnati, Columbus, Toledo & Canton Ohio
- Jim Rozelle PE, PS
- Laurie Chase PE



WHAT IS AN AWQMP ?

- Section 208 of the 1977 Federal Water Pollution Control Act as Amended
 - ...the Governor shall designate (A) the boundaries of each such area, and (B) a single representative organization, including elected officials from local governments or their designees, capable of developing effective **area wide waste treatment management plans** for such area.
 - the identification of treatment works necessary to meet the anticipated municipal and industrial waste treatment needs of the area over a twenty-year period, annually updated



Areawide Water Quality Planning Agencies in Ohio




- TMACOG
- NOACA
- NEFCO
- ERCOG
- OKI
- MVRPC
- State of Ohio - EPA




AWQMP Continued

- Areawide waste treatment management plans shall be certified annually by the Governor or his designee ... as being consistent with applicable basin plans and such areawide waste treatment management plans shall be submitted to the Administrator for his approval.
- The Governor of each State, in consultation with the planning agency designated under subsection (a) of this section, at the time a plan is submitted to the Administrator, shall designate one or more **waste treatment management agencies** (which may be an existing or newly created local, regional or State agency or potential subdivision) for each area designated under subsection (a) of this section and submit such designations to the Administrator.

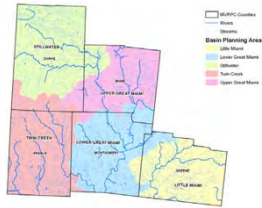


What does a 208 Plan Include ?

1	Delineate Current Service Areas	GIS Maps
2	Evaluate Sewer System Conditions	Identify Improvements
3	Need for added Sewer Service Area	Map
4	Delineate Projected Service Area	Forecast & Map
5	Develop Prescriptions	Un-Sewered Areas
6	Evaluate WTP Capacity	Itemize & Estimate
7	Determine Future Capacity Needs	Population Growth
8	Evaluate Future WTP Capacity	Future Needs & Cost
9	General Plan to Implement	CIP & O&M
10	Management Agency Qualification	Agreements

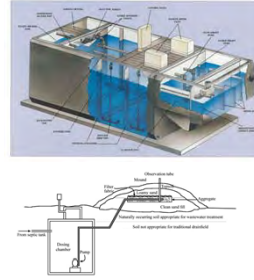


Facility Planning Areas



- Map(s) locating each 201 Planning Area within MVRPC
- Discussion of population change, expansion of service & Plant upgrades over 20-years.
- Water Quality in area streams.

Prescriptive Actions



- Location of new development.
- Package Plants
- Non-conventional treatment systems
- Farmland Preservation
- Septic Systems
- NPDES permits.

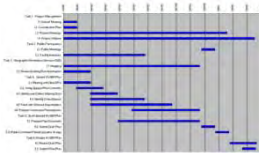
Designated Management Agencies

- List of designated management agencies for existing treatment systems.
- Management agencies for areas outside Facility Planning Areas



Planning Process

- 14-Month Process
- Meet Bi-monthly with Area-wide Facility Planning Subcommittee.
- Develop Website
- Questionnaire
- 10 Public Outreach Events.
- TAC & Board Approval



Meeting Notes



Stantec

Project Kickoff Meeting

Miami Valley Regional Planning Commission Areawide Water Quality Management Plan

Date/Time: March 24, 2010
Place: MVRPC Offices, One South Main Street, Suite 260
Next Meeting: April 7, 2010
Attendees: Matthew Lindsay, MVRPC
Jim Rozelle, Stantec
Benjamin Schattschneider, Stantec
Laurie Chase, Blue Heron Engineering Services
Absentees: n/a
Distribution: Attendees
Emily Whitehead, Stantec

Item:

Action:

Project Management Plan

Jim Rozelle presented the project management plan, which included handouts with the project management team organization chart, scope of services and the project schedule.

Matt Lindsay to review and comment on handouts.

<This review was completed on March 26, 2010. Stantec's response to review comments is attached.>

Invoicing and Reporting Requirements

Stantec will invoice monthly and will provide a breakout of hours and progress summary that correlates to MVRPC's grant deliverables.

Matt to provide deliverable breakdown for future reference.

Public Participation Plan

Stantec will follow the approach outlined in the project proposal.

Stantec to set up the project website by the end of May 2010.

A project website will be set up to include related documents and presentations for public meetings.

Emily Whitehead to continue to work with MVRPC IT Staff to coordinate website development.

One Team. Infinite Solutions.

Stantec

March 24, 2010
MVRPC 208 Plan Kickoff Meeting
Page 2 of 3

Existing Plan Information

Stantec will review the MVRPC's library of 208 planning documents and compile a list of references. When possible, Stantec will obtain digital files and avoid making hard copies.

<This review was completed on March 24, 2010. Electronic documents were transferred to Stantec's server. A list of available references is attached.>

Geodatabase Components

Stantec will follow the approach outlined in the project proposal. A project website will be set up to include related documents and presentations for public meetings.

Emily Whitehead will continue to work with MVRPC IT Staff to obtain needed information.

Proposed AWQMP Table of Contents

The proposed table of contents was presented and discussed. *<Additional items to consider adding to the plan include sludge management and funding resources.>*

Matt to review proposed table of contents and NPDES permit holder survey and provide comments.

Stantec will develop a plan for identifying missing and outdated information once existing plan information has been reviewed and the final table of contents has been developed.

<This review was completed on March 26, 2010. Stantec's response to review comments is attached.>

Ohio EPA's Critical Issues

A list of issues to be discussed with the Ohio EPA district office was outlined.

Matt to schedule a meeting with the Ohio EPA Southwest District Office.

The meeting adjourned at 11:30 am.

The foregoing is considered to be a true and accurate record of all items discussed. If any discrepancies or inconsistencies are noted, please contact the writer immediately.

Stantec Consulting Services, Inc.

Jim Rozelle, P.E., P.S.
Water Resources Program Manager, Ohio
jim.rozelle@stantec.com

Attachment: Meeting Agenda
Project Team Organization Chart
Scope of Services
Project Schedule

Stantec

March 24, 2010
MVRPC 208 Plan Kickoff Meeting
Page 3 of 3

Revised AWQMP Table of Contents
Revised NPDES Permit Holder Survey
List of Available MVRPC 208 Plan-Related Resources

c. Attendees
E. Whitehead
File 175630004

Stantec

MIAMI VALLEY REGION AREAWIDE WATER QUALITY MANAGEMENT PLAN

Appendix J 208 Plan Update Meeting Notes

Meeting Notes



Stantec

Areawide Facility Planning Subcommittee Meeting

Miami Valley Regional Planning Commission Areawide Water Quality Management Plan

Date/Time: June 2, 2010 at 9:30 a.m.
Place: MVRPC Center for Regional Cooperation, 1100 W. Third Street
Next Meeting: August 4, 2010
Attendees: Matthew Lindsey, MVRPC
Mark Isaacson, Greene County Combined Health District
Stephen Anderson, Greene County Regional Planning Commission
Jim Fox, Greene County Sanitary Engineering Department
Robert Sowers, City of Fairborn
Beth Moore, City of Miamisburg
Marcus Lehotay, City of Miamisburg
John Applegate, City of Union
Michael Gebhart, Bethel Township
Jerome Hirt, Sr., Bethel Township
Patrick Turnbull, Miami County
Dave Davis, City of Piqua
Deborah Swan, City of Troy
Alice Godsey, Clark County
James Simpson, OEPA/SWDO
Dan Dudley, OEPA
Debora Roth, OEPA/SWDO
Jillian Rhoades, Fanning Howey
Jim Rozelle, Stantec
Emily Whitehead, Stantec
Benjamin Schattschneider, Stantec
Laurie Chase, Blue Heron Engineering Services

Item:

Status of GIS and Website Development

Emily Whitehead provided demonstration of project website and survey.

One Team. Infinite Solutions.

Facility Planning and Facility Planning Area Issue Paper

Jim Rozelle facilitated discussion regarding Issue Paper #1 – Facility Planning and Facility Planning Areas.

The following issues/comments and action items were discussed and noted:

- Table 1 will be updated to include County Designated Management Agencies (DMAs) and other DMAs not currently listed for Facility Planning Areas shown on the associated mapping. MVRPC will assist in revising this table.
- MVRPC will draft a prescription that addresses 6119 agencies. This prescription will help to clarify issues associated with 6119 service area overlaps existing FPAs and 6119 agencies that only exist on paper (no infrastructure in place.)
- MVRPC policy D will be updated to reflect upcoming home sewage treatment system rules..
- It was noted that Comprehensive and Master Plans for Counties and Townships should be coordinated with AWQMP.
- It was suggested that planning and zoning officials should sign off on final version of the plan.
- How were overlaps around Columbus addressed? OEPA provided an explanation – have a lead DMA, certain areas sign agreements

Items for Discussion from Issue Paper #1

1. There are no Facility Plans (FP) in the Region that are in the process of being revised.
2. Are there any FPAs that should be revised based on current growth? Miami County is working on unsewered areas and cleanup.
3. Is there a need to develop a list of service area agreements between DMAs? Include question on Service Area Agreements on survey.
4. How do we ensure that there are no future conflicts regarding over-lapping service area boundaries? Address areas that have existing issues, these should be addressed in plan, OEPA – some areas can not be sewerred, include in plan options for these areas such as on site sewage treatment.
5. What changes to MVRPCs current policy on Facility Planning Boundary Modifications that should be considered by the MVRPC Board to clarify to which issue the various facility planning policies apply? Not addressed.
6. How are the action items going to be implemented? Not addressed.

Stantec

June 2, 2010
Areawide Facility Planning Subcommittee Meeting #1
Page 3 of 3

Action Items

- Set up meeting with County Health Departments (MVRPC).
- Comments on issue paper should be sent to MVRPC within two weeks (DMAs), final version will be posted on project website (Stantec).
- Website and survey will be finalized and sent out in next 2 weeks.
- Include draft plan outline on website for committee review.

The meeting adjourned at 11:30 a.m.

The foregoing is considered to be a true and accurate record of all items discussed. If any discrepancies or inconsistencies are noted, please contact the writer immediately.

STANTEC CONSULTING SERVICES INC.

Jim Rozelle, P.E., P.S.
Water Resources Program Manager, Ohio
jim.rozelle@stantec.com

Attachment: Issue Paper #1 – Facility Planning and Facility Planning Area
Meeting Agenda
Meeting Attendee Sign In Sheets

c. Attendees
File 175630004

Meeting Notes



Stantec

Health Department/Districts Meeting

Miami Valley Regional Planning Commission Areawide Water Quality Management Plan

Date/Time: June 29, 2010 at 10:00 a.m.
Place: MVRPC Center for Regional Cooperation, 1100 W. Third Street
Next Meeting: n/a
Attendees: Matthew Lindsey, MVRPC
Roberta Mangen, Darke County Health Department
Elizabeth Farver, Darke County Health Department
Deb Leopold, Greene County Combined Health District
Mark Isaacson, Greene County Combined Health District
Jeff Koehl, Miami County Department of Health
Roger McCampbell, Preble County Health Department
Jim Rozelle, Stantec
Laurie Chase, Blue Heron Engineering Services
Absent: Public Health – Dayton and Montgomery County

Item:

Project Introduction

Matt Lindsay and Jim Rozelle provided an overview of the Areawide Water Quality Management Plan Update project. Each district was provided with a county map and was asked to identify areas of concern related to unsanitary conditions, growth, or other issue.

Health Department Water Quality Management Initiatives

The following health department-sponsored initiatives and related issues were discussed and noted:

- New home sewage treatment system (HSTS) laws and the upcoming rules (effective July 2012) and how they will impact county-wide HSTS programs
- What constitutes accessibility to sanitary sewers (200-, 300- or 500-feet?)
- Unsanitary conditions
- Available resources

Action Items

- Health Departments to review county maps and provide water quality problem-related information to Matt Lindsay as requested.

One Team. Infinite Solutions.

Stantec

June 29, 2010
MVRPC AWQMP Update – Health Districts Meeting
Page 2 of 2

- Districts to forward available information on watershed action planning, HSTS inventories and mapping, water quality initiatives, etc. to Matt Lindsay.
- Stantec will include a section on funding in the 208 plan that will detail funding sources identified during the meeting.
- Health department representatives are encouraged to stay actively involved in the planning process.

The meeting adjourned at 11:30 a.m.

The foregoing is considered to be a true and accurate record of all items discussed. If any discrepancies or inconsistencies are noted, please contact the writer immediately.

STANTEC CONSULTING SERVICES INC.

Jim Rozelle, P.E., P.S.
Water Resources Program Manager, Ohio
jim.rozelle@stantec.com

Attachment: Meeting Attendee Sign In Sheets

c. Attendees
File 175630004

Meeting Notes



Stantec

Soil and Water Conservation Districts Meeting

Miami Valley Regional Planning Commission Areawide Water Quality Management Plan

Date/Time: June 29, 2010 at 2:00 p.m.
Place: MVRPC Center for Regional Cooperation, 1100 W. Third Street
Next Meeting: n/a
Attendees: Matthew Lindsey, MVRPC
John Kaiser, Darke Soil and Water Conservation District (SWCD)
Jeremiah McDowell, Greene County SWCD
Kraig Small, Miami County SWCD
Jim Dillon, Montgomery County SWCD
BJ Price, Preble County SWCD
Jim Rozelle, Stantec
Laurie Chase, Blue Heron Engineering Services

Item:

Project Introduction

Matt Lindsay and Jim Rozelle provided an overview of the Areawide Water Quality Management Plan Update project. Each district was provided with a county map and was asked to identify areas of concern related to unsanitary conditions, livestock, stream bank erosion, etc.

SWCD Water Quality Management Initiatives

The following SWCD-sponsored initiatives were discussed and noted:

- Farm pond layout
- Manure management
- Greene County's stream bank restoration efforts
- Petition ditches
- Wetland restoration
- Phosphorus and nitrogen index strategies (as referenced in Ohio EPA's Twin Creek TMDL)
- Darke and Greene Counties' Watershed Action Plans
- OSU Extension Programs covering pesticide application, workshops on lawn care and septic systems

One Team. Infinite Solutions.

Stantec

June 29, 2010

MVRPC AWQMP Update - Soil and Water Conservation District Meeting

Page 2 of 2

SWCD Water Quality Management Concerns

The following concerns were expressed by the SWCD representatives:

- Areas with unsanitary conditions – difficult to identify and develop appropriate solutions.
- Log jams create significant stream bank problems in the area
- Funding resources needed for all types of water quality-related initiatives

Action Items

- SWCDs to review county maps and provide water quality problem-related information to Matt Lindsay as requested.
- Districts to forward available information on watershed action planning, livestock feeding areas, water quality initiatives, etc. to Matt Lindsay.
- Stantec will include a section on funding in the 208 plan that will detail funding sources identified during the meeting.
- SWCD representatives are encouraged to stay actively involved in the planning process.

The meeting adjourned at 3:30 p.m.

The foregoing is considered to be a true and accurate record of all items discussed. If any discrepancies or inconsistencies are noted, please contact the writer immediately.

STANTEC CONSULTING SERVICES INC.

Jim Rozelle, P.E., P.S.
Water Resources Program Manager, Ohio
jim.rozelle@stantec.com

Attachment: Meeting Attendee Sign In Sheets

c. Attendees
File 175630004

Meeting Notes



Stantec

Areawide Facility Planning Subcommittee Meeting

Miami Valley Regional Planning Commission Areawide Water Quality Management Plan

Date/Time: August 4, 2010 at 9:30 a.m.
Place: MVRPC Center for Regional Cooperation, 1100 W. Third Street
Next Meeting: October 6, 2010
Attendees: Matthew Lindsey, MVRPC
Pat Turnbull, Miami County
Jim McGarry, Miami County
Dave Davis, City of Piqua
Dave Bartner, City of Piqua
Liz Farver, Darke County Health District
Stephanie O'Connor, Darke County Health District
Frank Barosky, City of Fairborn
Mark Livengood, Montgomery County Water Service
Joe Miller, Ohio EPA
Debora Roth, Ohio EPA
Deborah Swam, City of Troy
Kenton Domer-Shank, Public Health – Dayton & Montgomery County
Greg Merrill, Montgomery County
John P. Applegate, City of Union
Stephen Anderson, RPCC Greene County
Roger McCampbell, Preble County General Health District
Mark Isaacson, Green County Combined Health District
Jim Fox, Greene County
Ron Volkerding, Greene County
Christy Butera, Tipp City
Mo Eichman, Tipp City
Jan Vargo, Huber Heights
Tammi Clements, City of Dayton
Dusty Hall, Miami Conservancy District
Jim Rozelle, Stantec
Laurie Chase, Blue Heron Engineering Services

One Team. Infinite Solutions.

Stantec

August 4, 2010
Areawide Facility Planning Subcommittee Meeting #2
Page 2 of 3

Item:

FPA Issue Updates

Matt Lindsay reported that a new facilities planning area (FPA) proposal was signed on August 3, 2010 for the Bethel Township area. A sewer agreement was signed by Miami County and Tri-Cities that assigns planning authority to Miami County. The FPA will be incorporated into the updated 208 plan.

The Village of Philipsburg, currently under Ohio EPA Findings and Orders, presented a draft Alternatives Analysis Report for sewerage the village. The final report is expected to be submitted by the end of August 2010.

Prescriptive Actions in AWQMP/Issue Paper #2

Jim Rozelle facilitated discussion regarding Issue Paper #2 – Prescriptive Actions. Prescriptions to be included in the Updated 208 Plan focus on wastewater collection and treatment issues only. Recommendations are included to address other issues.

The following issues/comments and action items were discussed and noted:

- Prescriptions regarding privately owned treatment systems are desired by many DMAs. Additional follow-up actions were noted and are listed below.
- MVRPC will develop a list of entities accepting septage.
- Many DMAs would like the terms “accessibility” and “availability” defined. It was noted that the terms will be included in the new HSTS rules currently under development.

Action Items

- County-focused meetings will be held to facilitate the development of DMA prescriptive actions. These meetings will be coordinated by the following:
 - Miami County – County Sanitary Engineer
 - Montgomery County – County Sanitary Engineer
 - Greene County – County Sanitary Engineer
 - Darke County – MVRPC
 - Preble County - MVRPC
- Matt Lindsay to send a list of DMAs and contacts to the Counties
- Matt Lindsay to contact Dan Dudley (Ohio EPA) to determine if a prescription regarding prohibiting privately- or non-PUCO regulated company-owned

Stantec

August 4, 2010
Areawide Facility Planning Subcommittee Meeting #2
Page 3 of 3

treatment plants can be included in the 208 plan. Additionally, can Class A facilities be prohibited?

- Stantec to revise the POTW survey to include question regarding accepting septage at treatment facility and compile a listing for MVRPC.
- Dave Heckler (Tri-Cities) to provide suggested language for revising the draft recommendation re: 6117 and 6119.
- Pat Turnbull (Miami County) to forward annexation language from the City of Troy.
- DMA prescriptions and recommendations should be forwarded to Matt Lindsay by September 15, 2010.

The meeting adjourned at 11:15 a.m.

The foregoing is considered to be a true and accurate record of all items discussed. If any discrepancies or inconsistencies are noted, please contact the writer immediately.

STANTEC CONSULTING SERVICES INC.

Jim Rozelle, P.E., P.S.
Water Resources Program Manager, Ohio
jim.rozelle@stantec.com

Attachment: Issue Paper #2 – Prescriptive Actions
Meeting Agenda
Meeting Attendee Sign In Sheets

c. Attendees
File 175630004

1. What are the water quality issues in your County / Watershed that concern you, including stream quality problems, groundwater issues, failing septic systems, problem waste treatment plants / package plants, agricultural runoff, etc.

2. Based on the maps provided, what are your recommendations for the Facility Planning Area Boundaries (FPA's) in your area. Should they be expanded or reduced, and why ?

- Two questions were raised at this meeting regarding the FPA's. Matt Lindsay will contact Dan Dudley at Ohio EPA to obtain a response. The questions were:
 1. Should communities like Greenville and Union City where the corporate boundary has extended outside the current FPA, have their FPA modified to include the corporate boundary?
 2. For small satellite communities such as Palestine and Hollansburg where sewer services may be extended from New Madison, be:
 - Shown in the same color as New Madison's FPA?, or
 - Should the New Madison FPA boundary be extended out to these remote communities?

3. Are there currently areas that should be sewerred in the region and where are these located ?

4. Should non-conventional treatment systems be permitted in the County / Watershed ?

- **Conventional treatment systems being defined here as:**
 - governmental owned and operated waste treatment plants or typical non-discharging residential septic systems.
- **Non-conventional systems therefore include:**
 - privately owned and operated package plants, mound systems, lagoons, wetlands, discharging septic systems, multi-family residential septic systems, commercial or industrial septic type systems, etc.

1. What are the water quality issues in your County / Watershed that concern you, including stream quality problems, groundwater issues, failing septic systems, problem waste treatment plants / package plants, agricultural runoff, etc.

- Are you looking at changing the stream designation thru this Plan
- Any new treatment facility would have to go thru anti-degradation process.
- Stormwater controls tied to Plan?
- Other than Bowersville, not many areas with large number of septic systems.
- Hebble Ck channelization and erosion problems.
- Agricultural runoff a problem.

2. Based on the maps provided, what are your recommendations for the Facility Planning Area Boundaries (FPA's) in your area. Should they be expanded or reduced, and why ?

- Should FPA be used to protect/preserve watershed or should it only reflect projected growth and service area over 20-year life of the Plan?
- County has a Land Use Plan w/ Regional Plan Comm., several Townships moving toward Comp. Plans.
- New development should tie to existing sewer systems.

3. Are there currently areas that should be sewerred in the region and where are these located ?

- Bowersville
- What is the process to add to a communities FPA?
- Failing septic systems in Village of Jamestown.

4. Should non-conventional treatment systems be permitted in the County / Watershed ?

- Have they resolved the issue of curtain drains around septic systems?
- Only non-conventional as a cost effective system to replace a pre-existing condition.
- Need to evaluate new technology in non-discharging septic systems as an alternative to failed leach fields.
- Could wetlands/bio-retention areas be considered as an alternative ?

• Conventional treatment systems being defined here as:

- governmental owned and operated waste treatment plants or typical non-discharging residential septic systems.

• Non-conventional systems therefore include:

- privately owned and operated package plants, mound systems, lagoons, wetlands, discharging septic systems, multi-family residential septic systems, commercial or industrial septic type systems, etc.

1. What are the water quality issues in your County / Watershed that concern you, including stream quality problems, groundwater issues, failing septic systems, problem waste treatment plants / package plants, agricultural runoff, etc.

- Protection of headwater streams – development on headwaters (Concord Twp, Troy)
- Does planning area indicate growth plans? Not nec.
- Sanitary service to areas outside of FPA.
- 6119 district – how does it affect existing FPA?
- Preserving wetlands based on a watershed approach; preserve large wooded areas
- Livestock in streams
- Statewide HSTS rules are coming
- Atrazine levels in drinking water supply (Piqua)
- Invasive honeysuckle causing bank erosion (Stillwater main stem)

2. Based on the maps provided, what are your recommendations for the Facility Planning Area Boundaries (FPA's) in your area. Should they be expanded or reduced, and why ?

- Should preserve farmland
- Should preserve wet lands and wooded areas
- Via email on 09/30/2010: After considering the presentation and subsequent discussion at the meeting, there seems to be no compelling reason to alter the boundaries of the Troy FPA.

3. Are there currently areas that should be sewerred in the region and where are these located ?

- West Covington
- County HD conducted a study of HSTS, is study report available?

4. Should non-conventional treatment systems be permitted in the County / Watershed ?

- To say “No” is to prevent future innovation/improvements.
- Performance based criteria – it needs to work.
- Encourage innovation and alternate technologies
- Much of the county has unsuitable soils for a conventional system, so mounds are needed.
- Industrial pre-treatment programs

• Conventional treatment systems being defined here as:

- governmental owned and operated waste treatment plants or typical non-discharging residential septic systems.

• Non-conventional systems therefore include:

- privately owned and operated package plants, mound systems, lagoons, wetlands, discharging septic systems, multi-family residential septic systems, commercial or industrial septic type systems, etc.

5. Are there other water quality related issues that you would like the 208 Plan to address

- Atrazine in Piqua water supply
- Run off, stormwater quantity, lack of filtration.
- Lift stations near streams
- Sludge deposition in well field protection areas

1. What are the water quality issues in your County / Watershed that concern you, including stream quality problems, groundwater issues, failing septic systems, problem waste treatment plants / package plants, agricultural runoff, etc.

- Salt Runoff
- Headwater stream development
- Quantity should be considered in addition to quality
- Need to have watershed approach to SW Management.
- Prescription Drugs in system.
- Preserving wetlands and wet areas.

2. Based on the maps provided, what are your recommendations for the Facility Planning Area Boundaries (FPA's) in your area. Should they be expanded or reduced, and why ?

- Does annexation trump the 208 Facility Plan?
- Are there other areas beside Germantown being served outside the MVRPC Facility Planning area? Yes
- Should wet areas and high quality farmland be removed from the FPA?

3. Are there currently areas that should be sewerred in the region and where are these located ?

4. Should non-conventional treatment systems be permitted in the County / Watershed ?

- Package Plants? - No
- Should non-conventional be permitted? Yes, but they should be carefully evaluated, and some requirements for O&M.
- Do Counties inspect septic systems? Varies.

• Conventional treatment systems being defined here as:

- governmental owned and operated waste treatment plants or typical non-discharging residential septic systems.

• Non-conventional systems therefore include:

- privately owned and operated package plants, mound systems, lagoons, wetlands, discharging septic systems, multi-family residential septic systems, commercial or industrial septic type systems, etc.

5. Are there other water quality related issues that you would like the 208 Plan to address

- Why aren't lift stations located further from streams in case of overflows ? Required to be above 100-year flood.
- Does OEPA actually do an inspection of new construction?
- Will the Prescriptions be available for public view? Yes
- Are violations reported for public review? Yes OEPA

1. What are the water quality issues in your County / Watershed that concern you, including stream quality problems, groundwater issues, failing septic systems, problem waste treatment plants / package plants, agricultural runoff, etc.

- Who and How Often is water quality monitored?
- Declining funding for SWCD – less ability to take on new projects.
- West Alexandria WWTP expansion is under consideration.
- Glenwood = Sampleville

2. Based on the maps provided, what are your recommendations for the Facility Planning Area Boundaries (FPA's) in your area. Should they be expanded or reduced, and why ?

3. Are there currently areas that should be sewerred in the region and where are these located ?

- Hollandsburg/Palestine/Glen Karn (Darke Co).

4. Should non-conventional treatment systems be permitted in the County / Watershed ?

• Conventional treatment systems being defined here as:

- governmental owned and operated waste treatment plants or typical non-discharging residential septic systems.

• Non-conventional systems therefore include:

- privately owned and operated package plants, mound systems, lagoons, wetlands, discharging septic systems, multi-family residential septic systems, commercial or industrial septic type systems, etc.

5. Are there other water quality related issues that you would like the 208 Plan to address

AFPSC Notes
October 6, 2010

Meeting came to order at 9:30 am

Matt Lindsay and Jim Rozelle reviewed the outcomes of the 5 public involvement meetings held in September. While most of the meeting attendees were jurisdictional representatives, there were a fair number of private citizens and township trustees at the Miami County meeting in Troy. The issues raised at that meeting included farmland preservation, headwater stream protection, wetland preservation and woodland preservation.

Jim Rozelle led a discussion of the Designated Management Agency Issue Paper (#3).

DMA defined

- The OEPA definition of Management Agency was reviewed to be sure all in the plan understood what they were responsible for carrying out under the plan, and the qualifications required to be a DMA.
- It was noted that there may be some small villages that are still without sewers that may wish to no longer be DMA, preferring to be covered by their counties should the need arise, rather than shouldering the projects on their own.

Survey and Table 1/Table 2

- It was emphasized that completing the survey, preferably by October 27, was vital to getting the plan content correct.
- It was noted that Health District and Soil and Water Conservation District would need a different survey, if needed at all. The DMA survey form does not apply to the HD and SWCD operations.
- Communities were encouraged to use the paper survey to prepare to complete the online survey.
- Extensive outreach on the part of MVRPC and Stantec will be needed to get survey responses from those communities that have not participated to this point. See also, second bullet above, re: de-designating.

Facility Planning Areas

- Jim Rozelle reminded all present that a review of the current FPA was advisable based upon a communities development plans and projections. FPAs should encompass corporate boundaries, plus service areas, plus areas intended to be served over the next 20 years.
- Jim Simpson asked the group to be mindful in their planning of other potential problem areas outside the corporate boundaries that they may one day be called upon to serve.
- Matt Lindsay mentioned that communities may now determine areas within their FPA that are not to be served, as Yellow Springs has chosen to do. This can be used to limit the future investment in wastewater infrastructure.

- Matt Lindsay also mentioned that for the region as a whole, the 20-year population projections show no net growth. While Greene is projected for some growth, and Miami is projected for a lower rate than Greene, all other counties are projected to get smaller. For most communities, it will be difficult to justify an increase in FPA.

Prescriptions/Recommendations

- Jim Rozelle asked for prescriptions by November 10.
- Plan recommendations have been little discussed and will need to be developed as part of the plan draft and then as the plan draft is reviewed.

Implementation Statements

- Jim Rozelle stated that all DMA communities will need to submit new implementation statements committing to the plan and its recommendations. This will begin once the plan is in near final form, presumably in January. This will also require a significant outreach effort on the part of MVRPC and Stantec.
- *[In a discussion with Don Spang after the meeting, he indicated his belief that a DMA with a statement in our files need not re-submit such a statement, as they are still legislatively committed to the plan and the planning process.]*
- Language particular to Health Districts and Soil and Water Conservation Districts will need to be developed for implementation statements.

Dusty Hall asked about the role of water quality credit trading projects under this plan. These are implemented by SWCDs and stretch beyond the five-county area. Jim Rozelle indicated that the plan text should include some permissive language to allow for such projects to proceed as planned. These projects, 275 on the ground at this time through the MCD effort, are a logical entre for the SWCDs into the plan.

Meeting Notes



Stantec

Areawide Facility Planning Subcommittee Meeting

Miami Valley Regional Planning Commission Areawide Water Quality Management Plan

Date/Time: December 1, 2010 at 9:30 a.m.
Place: MVRPC Center for Regional Cooperation, 1100 W. Third Street
Next Meeting: February 2, 2011
Attendees: See Sign-In Sheets

Item:

FPA Issue Updates

Matt Lindsay reported that the initial draft 208 Plan Update was posted to MVRPC's website for the AFPSC's review prior to the meeting. In addition, he is continuing to work with wastewater management agencies to receive utility surveys, facility planning area (FPA) mapping and prescriptions.

Matt requested that all outstanding information and comments on the initial draft be submitted by January 14, 2011. Stantec will revise the draft plan and make it available for review prior to the February 2, 2011 AFPSC meeting.

It was noted that if specific prescriptions are not received by management agencies by January 14, 2011, MVRPC will assume those management agencies do not intend to provide any for the updated 208 Plan. Additionally, if FPA mapping is not received, MVRPC will assume there are no changes to the current boundary delineations.

The next round of public meetings will held in each of the 5 counties in early March 2011.

Draft 208 Plan Introduction

Jim Rozelle facilitated discussion regarding the initial draft 208 Plan and indicated where information from management agencies is needed to complete various sections and changes that will be made to certain figures. Jim encouraged the group to thoroughly review the document and submit comments.

The following specific issues/comments and action items were discussed and noted:

- MVRPC will be developing the section on maintaining the 208 Plan.
- Several management agencies indicated they submitted information that wasn't reflected in the plan. Stantec/Blue Heron noted that for time efficiencies purposes, survey data and other information received will be incorporated into the plan when the majority of data is received.

It was noted that information included in Appendices F through Q wasn't made available on MVRPC's website. Stantec will upload information for the

One Team. Infinite Solutions.

Appendices as it becomes available. A responsiveness summary for the comments received and how they were addressed will be included in an Appendix of the final Draft 208 Plan.

Stantec will post facility planning area boundaries that have been submitted on the website in early January. Stantec will indicate where approved and proposed changes have been made to the current FPA mapping.

- Ohio EPA asked if the facility planning boundaries will reflect property lines, or will they be generic boundaries. Matt indicated that DMAs are free to modify their FPA boundaries to the parcel level of detail, however, that is not going to be done for DMAs as part of this update. Going forward, MVRPC will work with any DMA(s) interested in refining their boundaries to the parcel level of detail.

The City of Piqua indicated that FPA boundaries follow property lines in their mapping.

- John Applegate requested that the proposed annexation policy be distributed to the AFPSC for review and discussion.
- Matt indicated that he will verify with Dan Dudley (Ohio EPA) that if a management agency already has legislation in place that accepts its role and responsibilities as a Designated Management Agency, the utility will not have to develop new legislation.
- Montgomery County asked if a policy can be developed that address gaps/overlaps in the facility planning areas that cross OKI and MVRPC regions.

Matt indicated that the following statement will be included in the 208 Plan Update: MVRPC will coordinate with OKI and/or Ohio EPA to ensure issues involving FPAs that overlie County boundaries and extend beyond the MVRPC areawide planning area will be appropriately addressed by all necessary planning agencies.

Action Items

- Develop section on “How the Plan will be Maintained” – Lindsay
- Distribute Union’s proposed annexation policy – Lindsay
- Develop existing and proposed FPA maps for communities proposing FPA changes and publish on project web site. – Stantec
- Ask Dan Dudley about steps communities must take to adopt/accept/recognize the updated plan. – Lindsay
- Direct communication to non-responsive communities. – Lindsay
- Review and provide comments on initial draft 208 Plan. – All
- Provide completed survey, DMA-specific prescriptions, and FPA mapping. – All DMAs

Stantec

December 1, 2010
Areawide Facility Planning Subcommittee Meeting #4
Page 3 of 3

The meeting adjourned at 10:40 a.m.

The foregoing is considered to be a true and accurate record of all items discussed. If any discrepancies or inconsistencies are noted, please contact the writer immediately.

STANTEC CONSULTING SERVICES INC.

Jim Rozelle, P.E., P.S.
Water Resources Program Manager, Ohio
jim.rozelle@stantec.com

Attachment: Meeting Attendee Sign In Sheets

c. Attendees
File 175630004

Meeting Notes



Areawide Facility Planning Subcommittee Meeting

Miami Valley Regional Planning Commission Areawide Water Quality Management Plan

Date/Time: February 9, 2011 at 9:30 a.m.
(originally scheduled for February 2, 2011)

Place: MVRPC Center for Regional Cooperation, 1100 W. Third Street

Next Meeting: March 9, 2011

Attendees: See attached sign-in sheet

Item:

Subcommittee Leadership

Matt Lindsay announced that Gregg Merrill has retired and Pat Turnbull, Miami County Sanitary Engineer, agreed to serve as the Subcommittee Chair. Ronald Volkerding, Greene County Sanitary Engineer, has agreed to serve as the Subcommittee's Vice Chair. The AFPSC approved the new Chair and new Vice Chair by voice vote.

208 Plan Public Meetings

Matt provided details about the 5 upcoming public meetings on the draft 208 plan that will be held February 28 – March 8, 2011. Posters (hard copy and/or pdf files) advertising the meetings are available.

Designated Management Agencies

Jim Rozelle (Stantec) distributed a draft list of the 67 designated management agencies (DMAs) identified in the Miami Valley Region, which include Health Districts and Soil and Water Conservation Districts. Primary DMAs are listed by the county in which treatment plants are located. The list was reviewed during the meeting and required changes were noted.

Prescriptive Actions

The prescriptions included in Ohio EPA's 2006 Water Quality Management Plan were distributed. Jim noted that Greene County is the only DMA that provided specific prescriptive actions for its Facility Planning Area (FPA). Jim requested that any DMA that has specific prescriptive actions to be included in the Miami Valley 208 plan should forward the actions to Matt or Jim ASAP.

Stantec

February 9, 2011
Areawide Facility Planning Subcommittee Meeting #5
Page 2 of 3

Utility Surveys

Jim presented a compilation of the utility survey information received to date. He noted that only 37 of the 46 NPDES permittees have provided surveys and requested that the nonresponsive utilities complete the surveys ASAP. Copies of survey responses are available on MVRPC's website.

Facility Planning Areas

To date, Stantec received 12 sets of maps with proposed changes to existing facility planning area boundaries. Maps of the proposed boundaries were displayed on easels for attendees to review and are available on MVRPC's website. Jim reviewed each DMA's submittal and highlighted areas where overlaps currently exist.

It was noted that some of the areas in conflict may not be resolved prior to the completion of the 208 Plan Update.

Several management agencies indicated they submitted information that wasn't reflected in the plan. Stantec/Blue Heron noted that for time efficiencies purposes, survey data and other information received will be incorporated into the Plan when the majority of data is received. It was noted that only revised planning boundaries that are acceptable to all affected DMAs will be included in the updated Plan. All other boundary changes will be incorporated into MVRPC mapping as required by the Commission's planning policies.

Pat Turnbull asked if each municipality will be required to sign off on the planning areas. Don Spang indicated that the AFPSC representatives need to coordinate a review of the planning areas with their respective municipalities.

208 Plan Executive Summary

Jim reviewed the executive summary that will be provided as a handout during the upcoming public meetings. Additionally, Jim strongly urged all DMAs to have representatives at the public meeting in their county in order to respond to local issues.

Project Schedule

The schedule for the remaining tasks associated with updating the Miami Valley 208 Plan was presented and discussed. The plan will be presented to the Technical Advisory Committee on March 17, 2011. The draft plan will be submitted to Ohio EPA for review on April 11, 2011.

MVRPC Website

Matt demonstrated how to navigate MVRPC's new website to access information on the 208 Plan Update project.

A copy of the executive summary, proposed FPA boundary changes and other project documentation is available. The updated draft plan, along with a summary of the comments received to date, will be available prior to the public meetings.

Hard Copies of Plan

The AFPSC Chair recommended that hard copies be provided to the committee members. Matt indicated that per contract, Stantec will provide 100 printed copies. Pat Turnbull also requested that the plan be provided in 3-ring binders.

Stantec

February 9, 2011
Areawide Facility Planning Subcommittee Meeting #5
Page 3 of 3

Action Items

- DMAs to forward generic prescriptions, completed surveys, FPA mapping and other outstanding 208 Plan information to be incorporated in to the document as soon as possible.
- Tri-Cities will develop sign-off documentation for proposed planning area boundary changes.
- Matt will send focused maps of proposed facility planning area boundary changes (with the exception of Tri-Cities) to each party involved for confirmation of acceptability.
- Stantec/Blue Heron will provide updated draft 208 Plan document and responsiveness survey to MVRPC and will post both to the MVRPC website prior to the first public meeting.
- Matt will send a copy of the current 208 plan document with changes from the initial draft tracked and the responsiveness summary to AFPSC members.
- All DMAs should have representatives attend public meetings in order to respond to local issues.

The meeting adjourned at 10:40 a.m.

The foregoing is considered to be a true and accurate record of all items discussed. If any discrepancies or inconsistencies are noted, please contact the writer immediately.

STANTEC CONSULTING SERVICES INC.

Jim Rozelle, P.E., P.S.
Water Resources Program Manager, Ohio
jim.rozelle@stantec.com

Attachment: Meeting Attendee Sign-In Sheets

c. Attendees
File 175630004

Areawide Facility Planning Subcommittee

April 13, 2011

MVRPC Center for Regional Cooperation

Meeting Summary

Meeting was called to order at 9:35 AM. All participants introduced themselves. See attendance sheet for complete list of attendees.

Matt Lindsay reviewed the meeting agenda and opened the floor for additional agenda items. No additional items were added to the agenda.

Jim Rozelle, Stantec Consulting, provided an overview of the Areawide Water Quality Management Plan Update report as prepared by Stantec Consulting. Jim discussed the Facility Planning Areas maps as received by MVRPC, and indicated the set of FPA updates which had outstanding objections to the change (Union, Tri-Cities, Fairborn and Miamisburg). He indicated that the agreed-to changes will be in the plan update and those still to be resolved will continue in the planning process to be brought into the plan at a later date.

Mr. Applegate asked what would be the consequences of not recommending the plan forward on this date. Rozelle and Lindsay stated that the absolute deadline for completing the project is June 30th.

Mr. Heckler indicated that Tri-Cities is intending to continue working for agreement on section-by-section updates to the Tri-Cities FPA update through the date of the TAC meeting.

There were a few edits and changes to the plan report since the earlier draft, based upon comments from a few individuals. The comments are summarized in the responsiveness summary, which Rozelle distributed. Several changes were references to information sources from Ohio EPA.

Rozelle invited the Subcommittee to continue to review the report from the MVRPC web site or a hard copy available at the meeting. Edits are welcomed now, and ongoing maintenance of the plan will be encouraged going forward.

Matt Lindsay led a discussion of the proposed Annexation Policy, which would guide MVRPC staff's maintenance of the AWQMP in cases of annexations which extend beyond current FPA boundaries.

Mr. Turnbull stated that the policy was a worthwhile approach to take for plan maintenance.

Mr. Gebhart indicated that Bethel Township's suggested amended language would be preferred, but the township would not object to the policy without the changes.

Mr. Turnbull stated that the proposed additional language from Bethel Township might create friction between communities in the course of the FPA update process.

Mr. Applegate, who proposed the policy, stated that the purpose of the policy is to streamline the process for maintaining the plan so that the plan can reflect completed, approved annexations – after the fact. The Bethel Township proposal clouds the issue, as these concerns are before the annexation is completed. The policy is a mechanism to smooth plan maintenance after annexation is complete.

Mr. Volkerding asked what the current process is for map updates. Lindsay indicated that all changes must be reviewed by the Board of Directors. Volkerding indicated that the policy provides “black and white” categories of situations, and that annexations often raise “gray area” issues that may be difficult to address through this policy.

Mr. Carpenter asked if the Board of Directors was consulted on this proposal. Lindsay indicated they were not yet consulted. Carpenter stated his concern that the public input opportunity for updating the AWQMP would be eliminated by this proposal. Carpenter stated a concern that, while small annexations may not be objectionable at all, but major annexations (several hundred acres) may have planning and infrastructure (not yet on site) but leading toward future service that may not get compensated for under this policy.

Applegate stated that the purpose of the policy was to align with legal responsibilities of municipalities to provide services to annexed properties. He reminded the subcommittee that this policy is about completed annexations.

Mr. Marshall stated that the desirability of region-level planning allows for the consideration of drainage basins (or watersheds) that municipal annexations often do not take into account.

Mr. Horst stated that this proposal would make it more difficult to plan and protect investments made on the part of utilities based on the planning. Large annexations might remove areas from a utility’s FPA for which investments had been made.

Mr. Wright indicated he is opposed to the Bethel Township amendment.

Mr. Turnbull moved that the policy proposal be tabled for further consideration, seconded by Mr. Volkerding.

There was a discussion of voting rules. MVRPC committed to develop a more formalized rules of operation for the Subcommittee.

The tabling motion failed by 7-9. Mr. Applegate moved the proposed policy be forwarded to the TAC, seconded by Mr. Heckler.

Mr. Spang indicated that the policy would be a separate item on the TAC’s agenda, separate from the overall plan document.

The motion passed 9 to 5.

The subcommittee forwarded the plan update report to the TAC by consensus. Next meeting was set for September 7, 2011. Meeting was adjourned at 11:05.